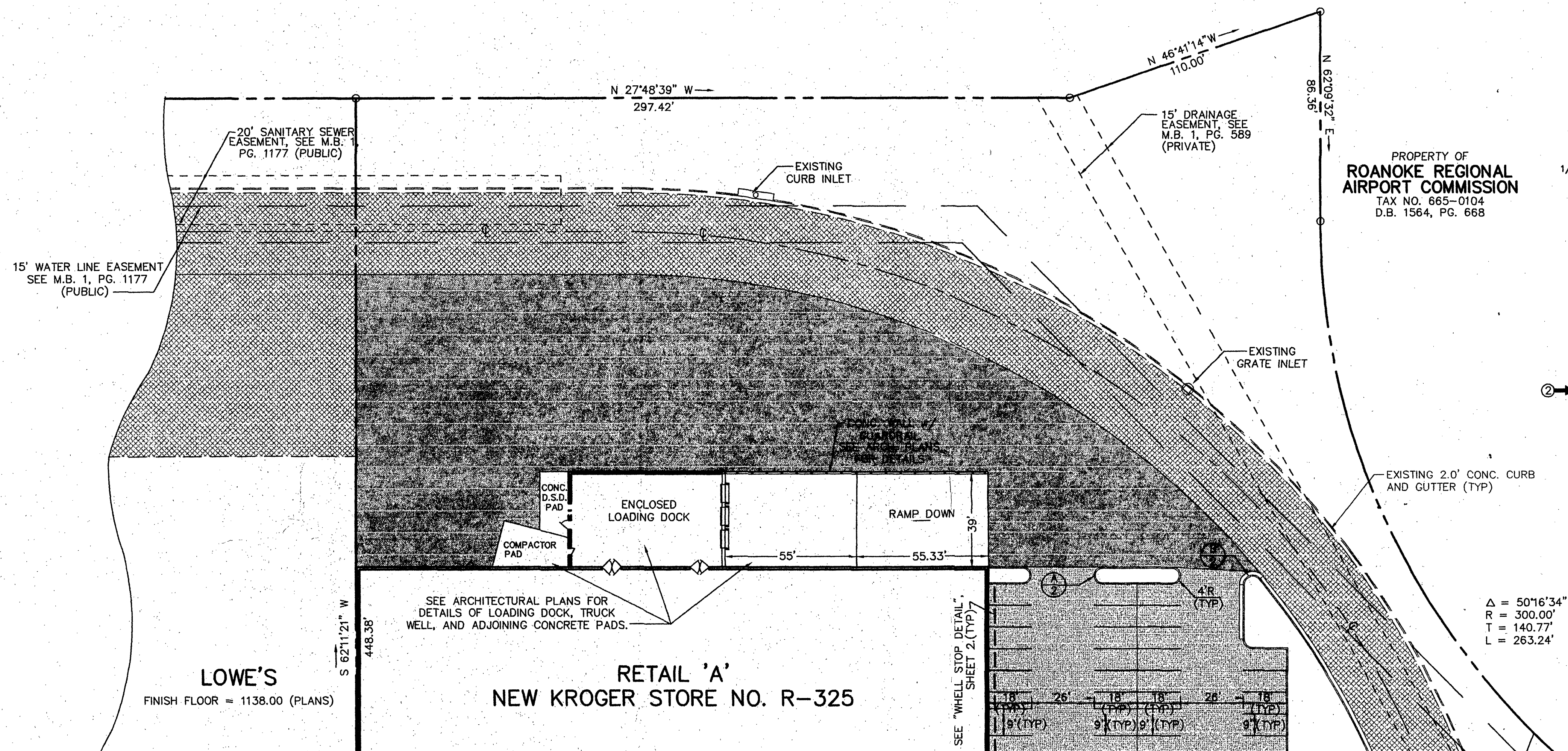


PROPERTY OF  
LMR LAND COMPANY, L.P.  
TAX NO. 665-0103  
D.B. 1561, PG. 1681  
"RETENTION BASIN"  
SEE M.B. 1, PG. 589

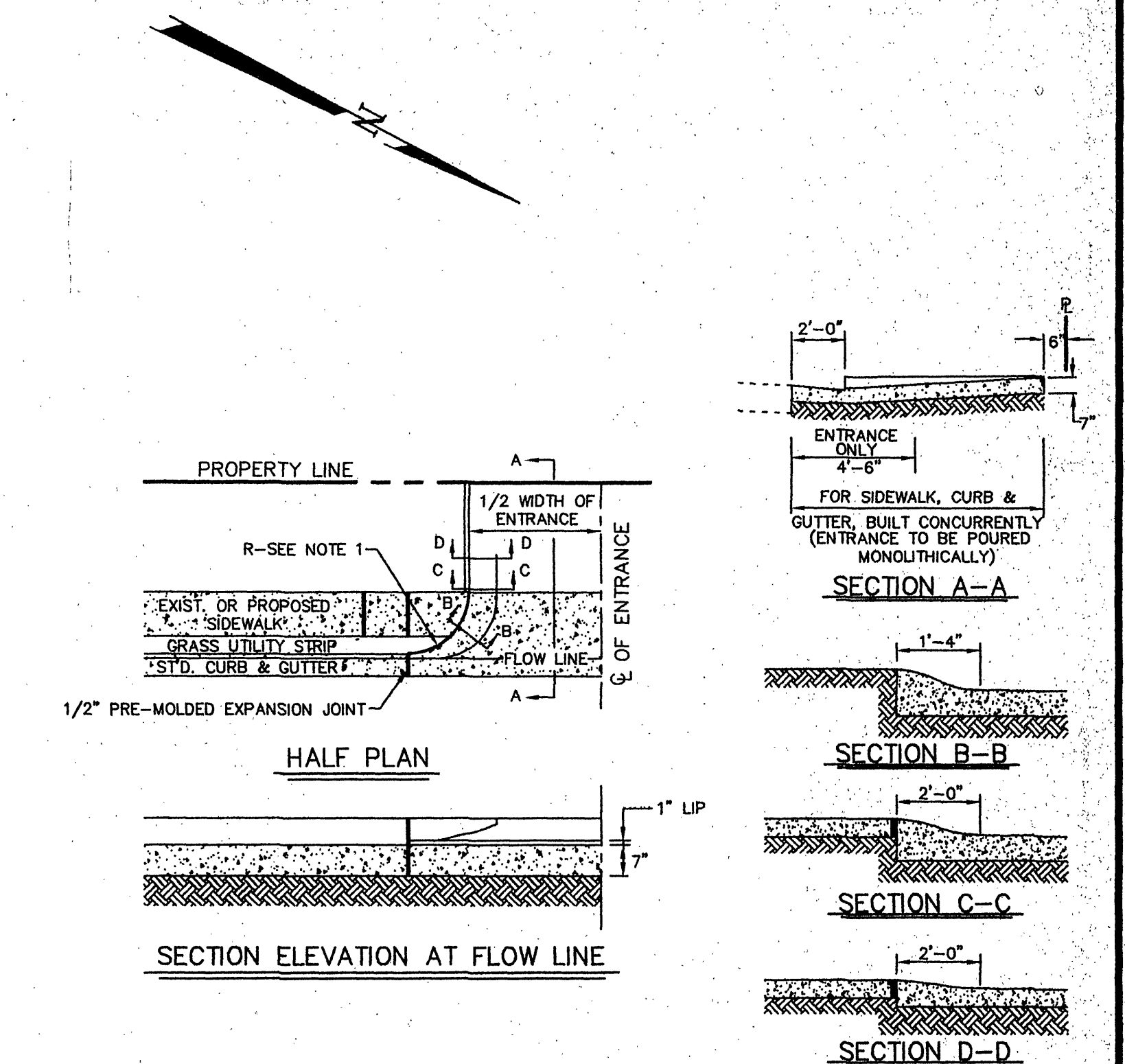


SEE SHEET 2 FOR CONTINUATION

#### NOTES:

1. STORM DRAINAGE STRUCTURES, SANITARY SEWER, AND WATERLINES WHICH ARE SHOWN AS EXISTING ARE UNDER CONSTRUCTION AT THE TIME OF PREPARATION OF THESE PLANS.
2. PAVING AND CURB & GUTTER SHOWN ON THESE PLANS ARE BASED ON THE CONSTRUCTION PLANS BY LOWE'S COMPANIES.
3. THE EXISTING ELEVATION CONTOURS SHOWN ARE BASED ON GRADES SHOWN ON LOWE'S PLANS AND THE ASSUMPTION THAT THESE AREAS ARE TO BE LEFT AT SUBGRADE WITH THE EXCEPTION OF THE TRAVEL LANES SHOWN TO BE BROUGHT TO FINAL GRADE AND PAVED BY LOWE'S COMPANIES.
4. THE CONTRACTOR SHALL VERIFY THE ELEVATIONS SHOWN FOR STRUCTURES SHOWN TO BE ADJUSTED. THE ELEVATIONS OF TRAVEL LANES BY LOWE'S SHALL ALSO BE VERIFIED TO INSURE PROPER COORDINATION AND TRANSITION BETWEEN THE CONSTRUCTION TO BE PERFORMED BY THE KROGER COMPANY AND THE CONSTRUCTION BY LOWE'S COMPANIES.

- STANDARD PAVEMENT BY KROGER - SEE DETAIL, SHEET 4
- HEAVY-DUTY PAVEMENT BY KROGER - SEE DETAIL, SHEET 4
- HEAVY-DUTY PAVEMENT BY LOWE'S - SEE DETAIL, SHEET 4



#### STANDARD CITY OF ROANOKE COMMERCIAL ENTRANCE DETAILS

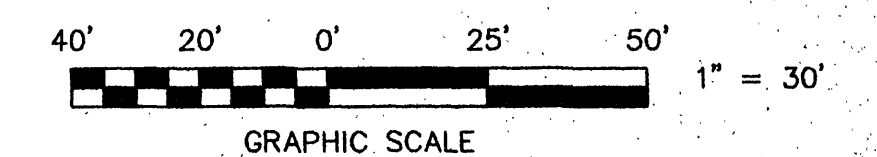
NO SCALE

#### GENERAL NOTES

1. Standard commercial entrance shall have a minimum curb radius (R) of 7-1/2 feet.
2. Minimum ENTRANCE width shall be 12 feet.
3. Where curb and gutter already exists, both curb and gutter shall be removed. If proposed entrance falls within five (5) feet of an existing joint, removal and reconstruction shall be to that joint. Any concrete removed at other than an existing joint shall be cut with a saw specifically manufactured for that purpose; this shall apply also to street pavement.
4. Where sidewalk exists or is constructed across driveways, the thickness thereof must correspond with the thickness of the entrance.
5. Whenever ENTRANCES exceed twenty-four (24) feet in width, a 1/2" pre-molded expansion joint filler shall be installed through the center, perpendicular to the flow line.
6. Finish ENTRANCES shall have a "course broom finish" running parallel to the flow line.
7. Curing shall be accomplished by the use of a liquid membrane seal containing white pigment applied at the rate of one (1) gallon per 150 square feet.
8. All ENTRANCES shall be constructed according to City of Roanoke specifications and to line and grades established by the City Engineering Department.
9. ENTRANCES exceeding thirty (30) feet in width shall be approved by the City Manager.

#### SPECIFICATIONS FOR CURB & GUTTER AND ENTRANCES

1. Work shall not commence in any public right-of-way before approval by Inspector and a permit is obtained from the Building Inspection Department.
2. Use only standard metal forms as approved by the Virginia Department of Transportation. Wooden forms will not be permitted.
3. Notify Inspector 24 hours prior to beginning construction.
4. Joints or score-marks are to be sharp and clean without showing edges of jointing tool.
5. Do not pour any concrete before forms are inspected and approved by the Inspector.
6. All radii shown at pre-molded expansion joints shall be 1/2" unless otherwise noted.
7. All concrete shall be Class "A", 3000 psi.
8. Minimum curb radius shown (R) is from back of curb & gutter to back of sidewalk.



	DIMENSIONAL PLAN - WEST FOR <b>THE KROGER COMPANY</b> SITUATE TOWNE SQUARE SHOPPING CENTER HERSHBERGER ROAD CITY OF ROANOKE, VIRGINIA	
	SCALE: 1" = 30' DESIGNED BY <u>C.L. WHITE</u> DRAWN BY <u>C.L. WHITE</u> CHECKED BY <u>W.O. # 93-1022</u> N.B. <u>JW-24</u> TAX NO. <u>665-0101</u>	DATE: SEPTEMBER 14, 1993 <b>T. P. PARKER &amp; SON</b> 816 Boulevard Post Office Box 39 Salem, Virginia 24153 Telephone: 703-387-1153 FAX: 703-388-5787

REVISED 10-25-93 PER CITY OF ROANOKE REVIEW - CLW  
RE-ISSUED FOR BID 9/20/93 - CLW