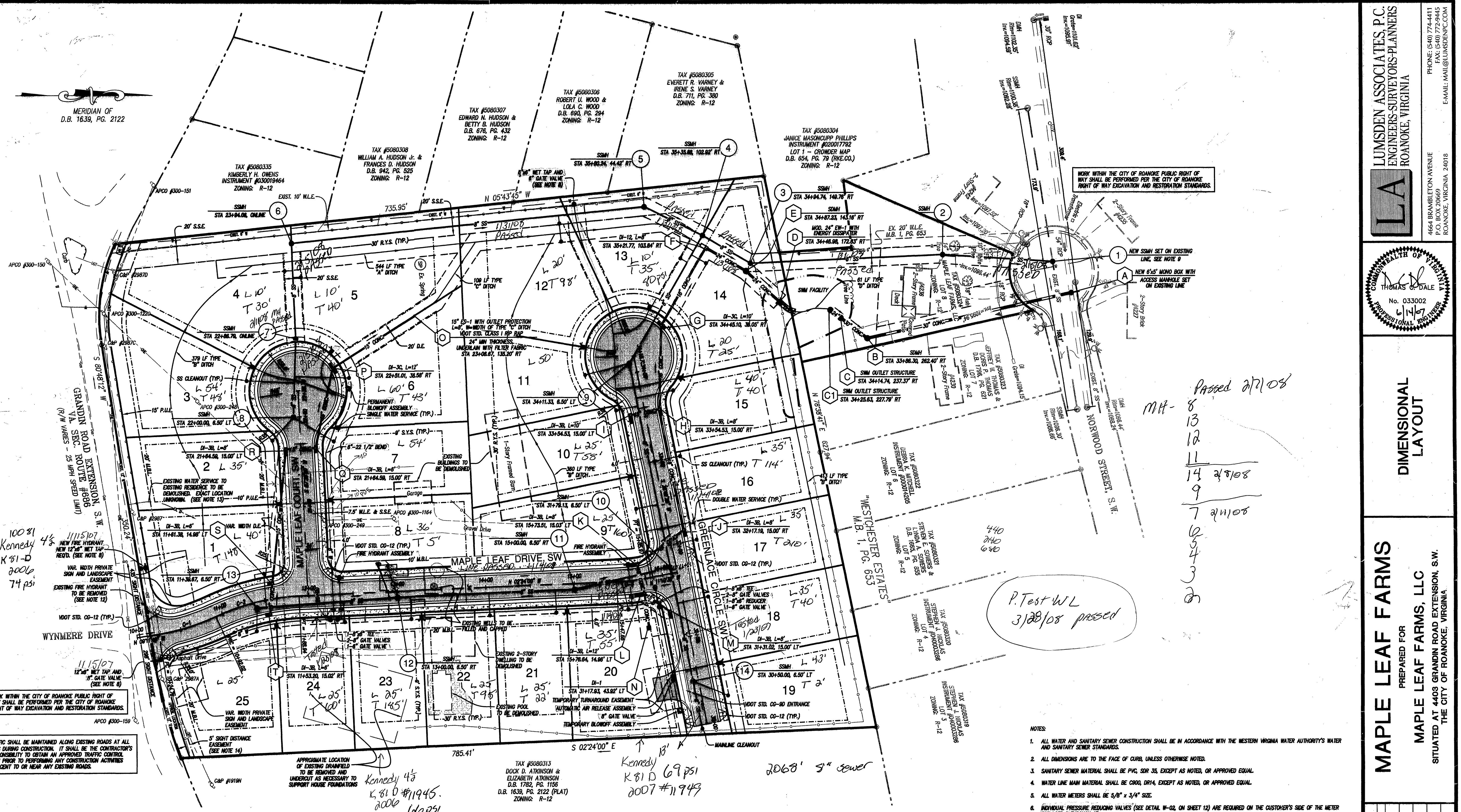


MERIDIAN OF D.B. 1639, PG. 2122



10081 Kennedy 4/3
K 81-D
2006
74 psi

WORK WITHIN THE CITY OF ROANOKE PUBLIC RIGHT OF WAY SHALL BE PERFORMED PER THE CITY OF ROANOKE RIGHT OF WAY EXCAVATION AND RESTORATION STANDARDS.

TRAFFIC SHALL BE MAINTAINED ALONG EXISTING ROADS AT ALL TIMES DURING CONSTRUCTION. IT SHALL BE THE CONTRACTOR'S RESPONSIBILITY TO OBTAIN AN APPROVED TRAFFIC CONTROL PLAN PRIOR TO PERFORMING ANY CONSTRUCTION ACTIVITIES ADJACENT TO OR NEAR ANY EXISTING ROADS.

APPROXIMATE LOCATION OF EXISTING DRAINAGE TO BE REMOVED AND UNDERLIFT AS NECESSARY TO SUPPORT HOUSE FOUNDATIONS

Kennedy 4/3
K 81-D #11945
2006
66 psi

Kennedy 13/1
K 81-D 69 psi
2007 #11945

2068' 3" sewer

P. Test WL
3/28/08 passed

MH-
8
13
12
14 2/10/08
9
7 2/11/08
6
5
4
3
2

ABBREVIATIONS table with columns for symbol and description (e.g., D.E. DRAINAGE EASEMENT, W.L.E. WATER LINE EASEMENT).

LEGEND table with columns for ITEM, EXISTING, and PROPOSED (e.g., Pavement, Storm Drain Line, Sanitary Sewer Manhole).

SANITARY SEWER MAIN BEARINGS AND DISTANCES table with columns for LINE, BEARING, and DISTANCE.

STATIC WATER PRESSURES AT METERS table with columns for LOTS and STATIC PRESSURE.

FIRE HYDRANT FLOW AND PRESSURE INFORMATION table with columns for HYDRANT LOCATION, STATIC PRESSURE, FLOW, and RESIDUAL PRESSURE.

- NOTES: 1. ALL WATER AND SANITARY SEWER CONSTRUCTION SHALL BE IN ACCORDANCE WITH THE WESTERN VIRGINIA WATER AUTHORITY'S WATER AND SANITARY SEWER STANDARDS. 2. ALL DIMENSIONS ARE TO THE FACE OF CURB, UNLESS OTHERWISE NOTED. 3. SANITARY SEWER MATERIAL SHALL BE PVC, SDR 35, EXCEPT AS NOTED, OR APPROVED EQUAL.

LUMSDEN ASSOCIATES, P.C. ENGINEERS-SURVEYORS-PLANNERS ROANOKE, VIRGINIA. Includes logo and contact information.

Professional Engineer Seal for Thomas C. Dale, No. 033002, dated 6/14/07.

DIMENSIONAL LAYOUT

MAPLE LEAF FARMS PREPARED FOR MAPLE LEAF FARMS, LLC SITUATED AT 4403 GRANDIN ROAD EXTENSION, S.W. THE CITY OF ROANOKE, VIRGINIA

REVISIONS table with columns for NO., DATE, and DESCRIPTION. Includes date June 14, 2007 and scale 1" = 50'.