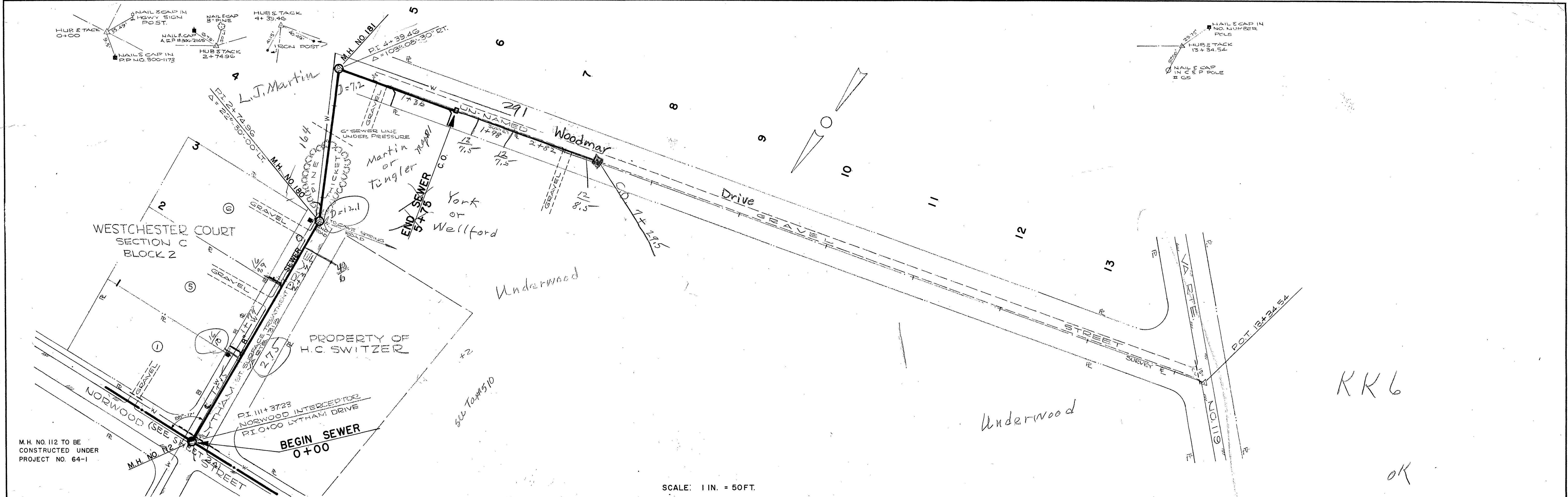
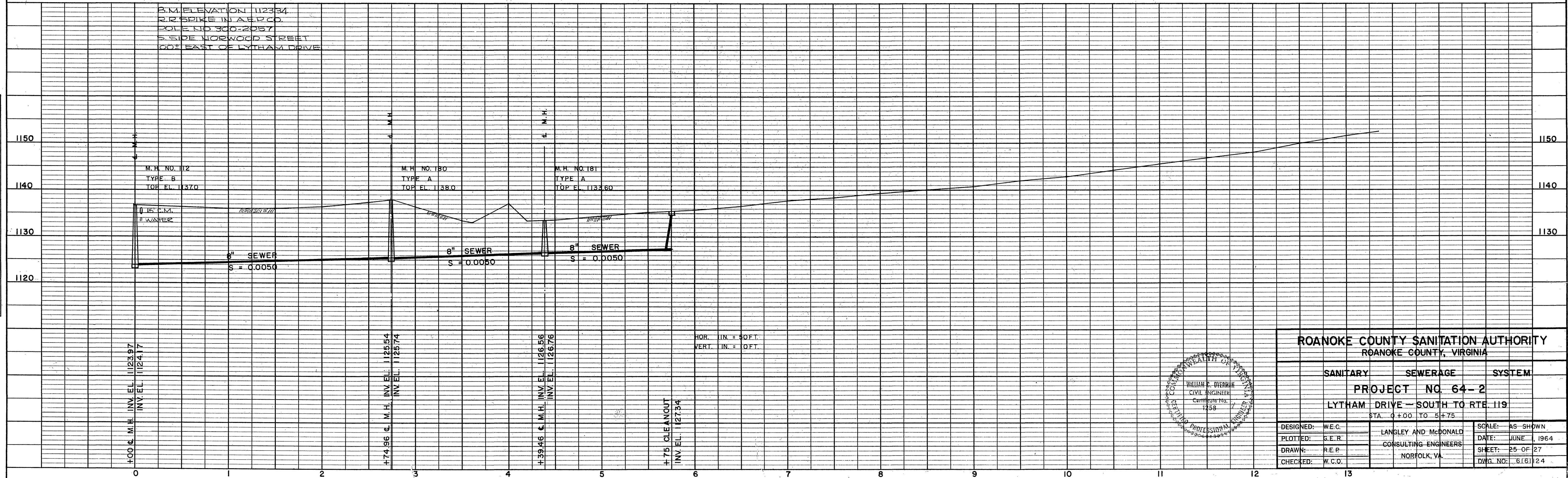


DATE	5-15-64
BY	J.G.S.
SURVEYED	W.E.C.
NOTE BOOK	W.E.C.
NO.	

DATE	5-15-64
BY	J.G.S.
PLOTTED	W.E.C.
NOTE BOOK	W.E.C.
NO.	



SCALE: 1 IN. = 50 FT.



ROANOKE COUNTY SANITATION AUTHORITY ROANOKE COUNTY, VIRGINIA		
SANITARY	SEWERAGE	SYSTEM
PROJECT NO. 64-2		
LYTHAM DRIVE - SOUTH TO RTE. 119		
STA. 0+00 TO 5+75		
DESIGNED:	W.E.C.	SCALE: AS SHOWN
PLOTTED:	G.E.R.	DATE: JUNE 1, 1964
DRAWN:	R.E.P.	SHEET: 25 OF 27
CHECKED:	W.C.O.	DWG. NO.: 616124

