

	Posted Speed (mph)	
<u>Location</u>	<u>0-35</u>	<u>36+</u>
Transition Spacing	20'	40'
Travelway Spacing	40'	80'

4. The buffer space length shall be as shown in Table 6H-4 for the posted speed limit.

5. Cone Taper Length (L):

Speed Limit MPH	Taper Length Lane Width in Feet		
	10	11	12
25	105	115	125
30	150	165	180
35	205	225	245
40	270	295	320
45	450	495	640
50	500	550	600
55	550	605	660
60	600	660	770
65	650	715	780

(Shoulder Taper = 1/3L Minimum)

6. A shadow vehicle with either an arrow board operating in the caution mode, or at least one high-intensity amber rotating, oscillating, or strobe light shall be parked 50'-100' in advance of the first work crew.

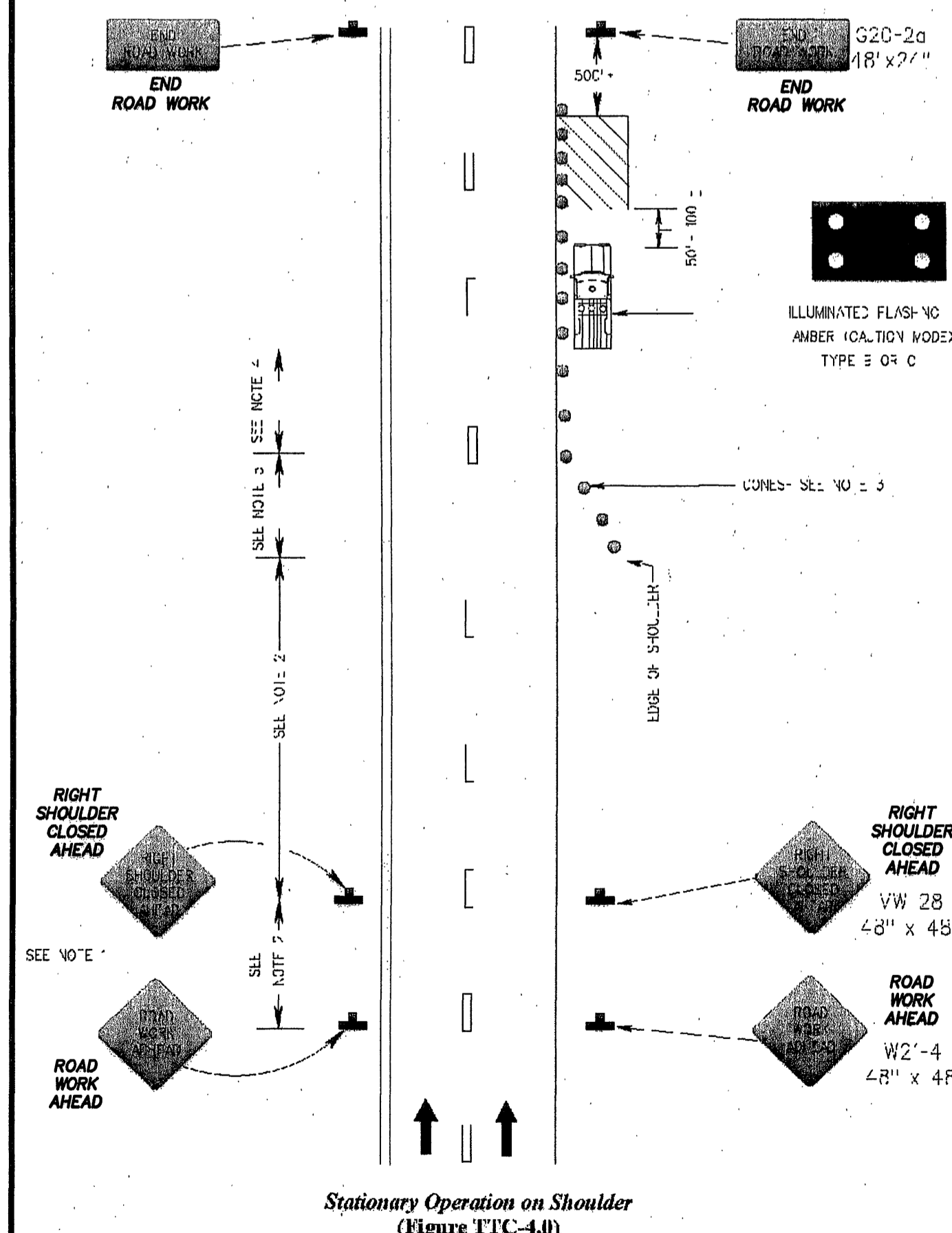
Option:

7. For short-duration operations of 60 minutes or less, all signs and channelizing devices may be eliminated if a vehicle with activated high-intensity amber rotating, oscillating, or strobe lights is used.

8. Vehicle hazard

Standard:

9. When a side road intersects the highway within the temporary traffic control zone, additional traffic control devices shall be placed as needed.



## TYPICAL TRAFFIC CONTROL