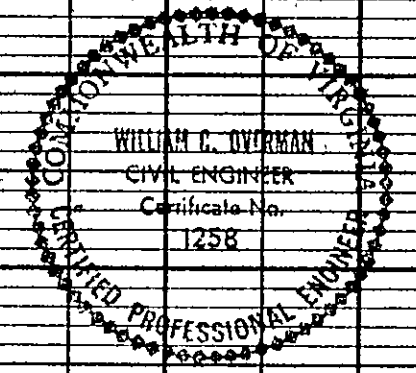
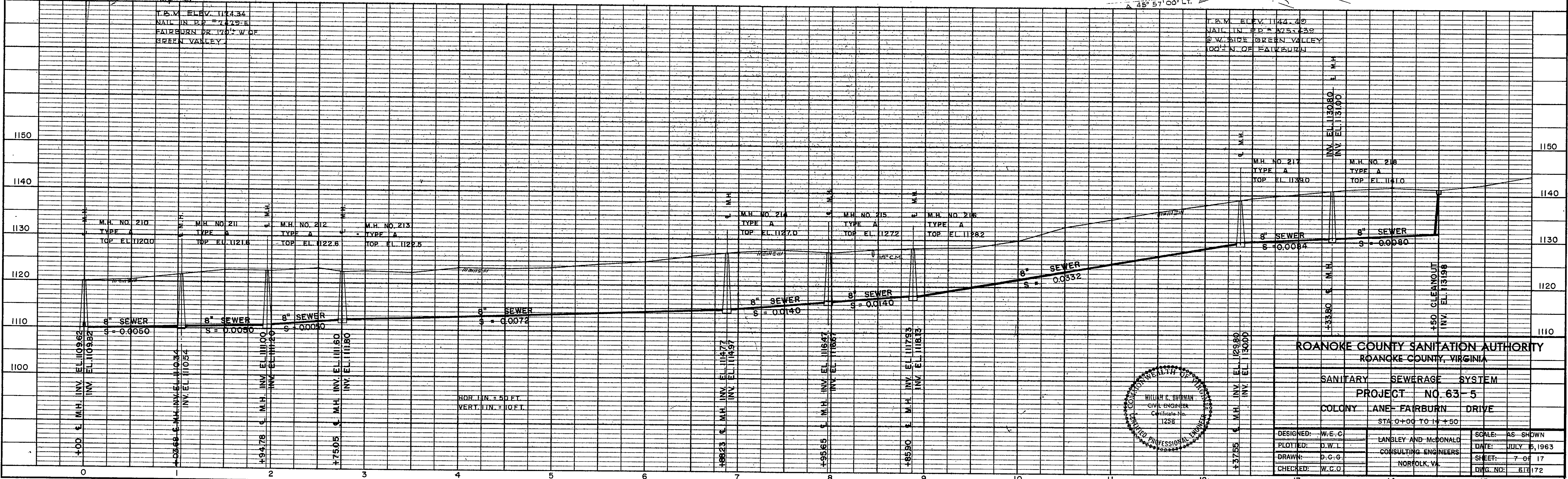
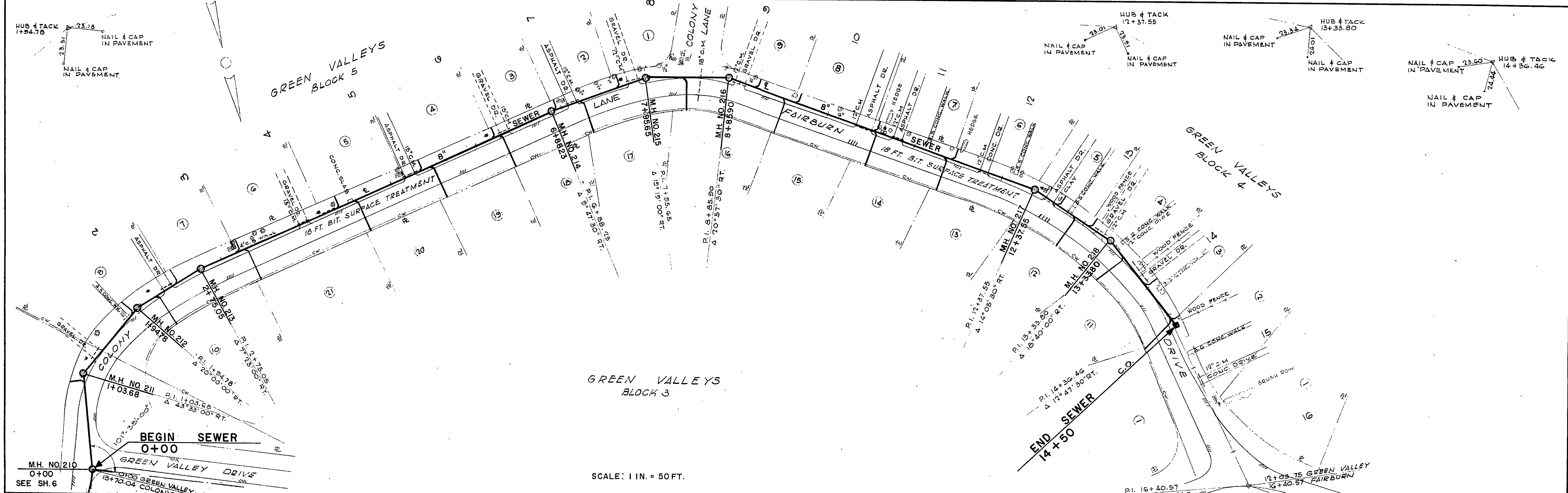


|      |            |      |
|------|------------|------|
| PLAN | SURVEYED   | DATE |
|      | NOTE BOOK  | BY   |
|      | ALIGNED    | DATE |
|      | RT. OF WAY | BY   |
|      | CHECKED    | DATE |
|      | NO.        | BY   |

|         |           |      |
|---------|-----------|------|
| PROFILE | SURVEYED  | DATE |
|         | NOTE BOOK | BY   |
|         | GRADES    | DATE |
|         | NOTED     | BY   |
|         | STRUCTURE | DATE |
|         | NO.       | BY   |



ROANOKE COUNTY SANITATION AUTHORITY  
 ROANOKE COUNTY, VIRGINIA

SANITARY SEWERAGE SYSTEM  
 PROJECT NO. 63-5  
 COLONY LANE- FAIRBURN DRIVE  
 STA. 0+00 TO 14+50

DESIGNED: W.E.C.  
 PLOTTED: D.W.L.  
 DRAWN: D.C.G.  
 CHECKED: W.C.O.

LAMBLEY AND McDONALD  
 CONSULTING ENGINEERS  
 NORFOLK, VA.

SCALE: AS SHOWN  
 DATE: JULY 5, 1963  
 SHEET: 7 OF 17  
 DWG. NO.: 618172