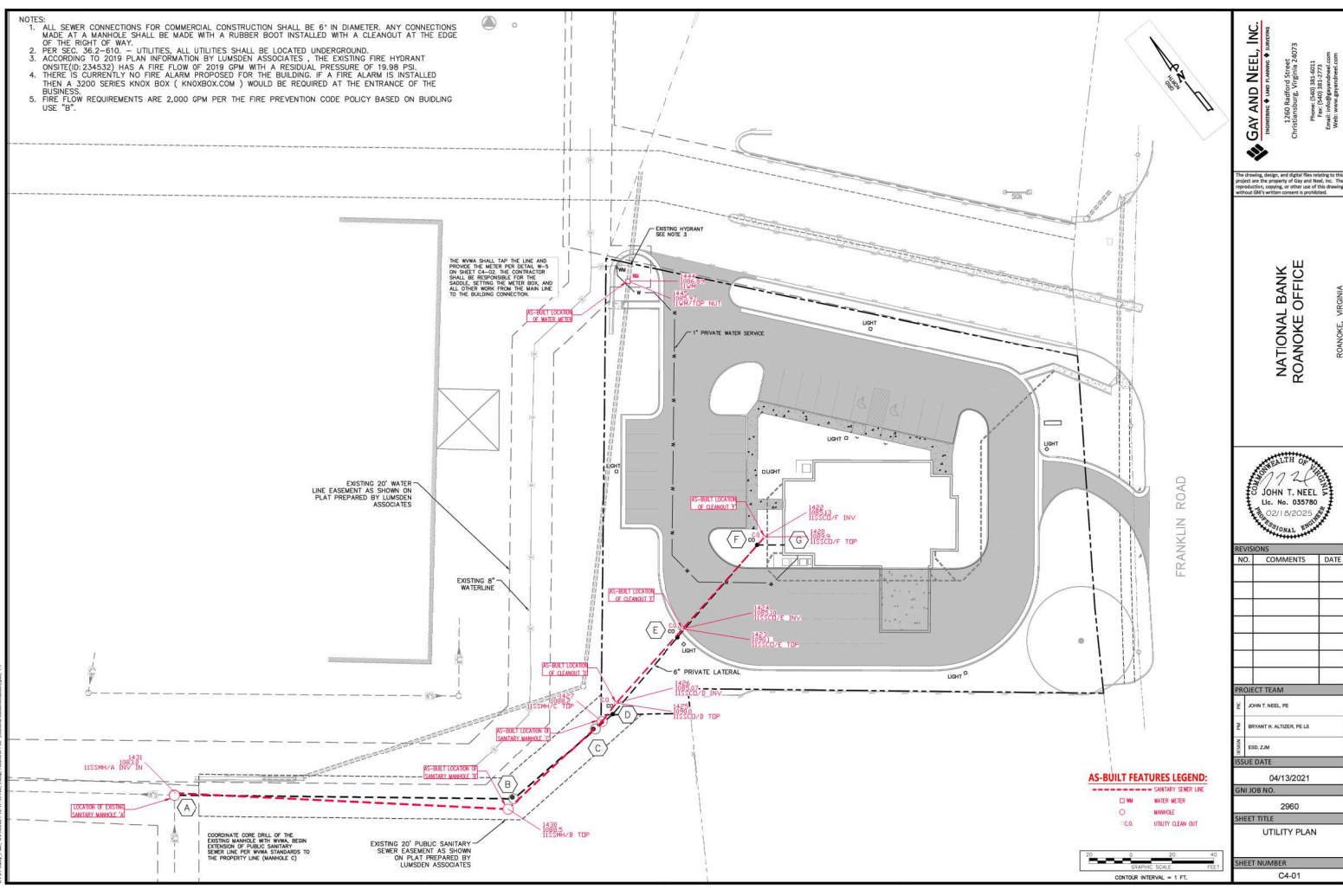


- NOTES:
1. ALL SEWER CONNECTIONS FOR COMMERCIAL CONSTRUCTION SHALL BE 6" IN DIAMETER. ANY CONNECTIONS MADE AT A MANHOLE SHALL BE MADE WITH A RUBBER BOOT INSTALLED WITH A CLEANDOUT AT THE EDGE OF THE RIGHT OF WAY.
 2. PER SEC. 36.2-610. - UTILITIES: ALL UTILITIES SHALL BE LOCATED UNDERGROUND.
 3. ACCORDING TO 2019 PLAN INFORMATION BY LUMSDEN ASSOCIATES, THE EXISTING FIRE HYDRANT ON SITE (D.234532) HAS A FIRE FLOW OF 2019 GPM WITH A RESIDUAL PRESSURE OF 19.98 PSI.
 4. THERE IS CURRENTLY NO FIRE ALARM PROPOSED FOR THE BUILDING. IF A FIRE ALARM IS INSTALLED THEN A 3200 SERIES KNOX BOX (KNOXBOX.COM) WOULD BE REQUIRED AT THE ENTRANCE OF THE BUSINESS.
 5. FIRE FLOW REQUIREMENTS ARE 2,000 GPM PER THE FIRE PREVENTION CODE POLICY BASED ON BUILDING USE "B".



GAY AND NEEL, INC.
TRANSMISSIONS & WATER DIVISION
1340 Battlefield Street
Christiansburg, Virginia 24073
Phone: (540) 383-3021
Fax: (540) 383-3273
Email: info@gayandneel.com
Web: www.gayandneel.com

The drawing, design, and digital files relating to this project are the property of Gay and Neel, Inc. The reproduction, storage, or other use of this drawing without G&N's written consent is prohibited.

**NATIONAL BANK
ROANOKE OFFICE**
ROANOKE, VIRGINIA



REVISIONS		
NO.	COMMENTS	DATE

PROJECT TEAM	
BY	JOHN T. NEEL, PE
BY	BRYAN R. ALTIERI, PE, LS
DATE	02/13/2021
ISSUE DATE	
04/13/2021	
G&N JOB NO.	
2960	
SHEET TITLE	
UTILITY PLAN	
SHEET NUMBER	
C4-01	