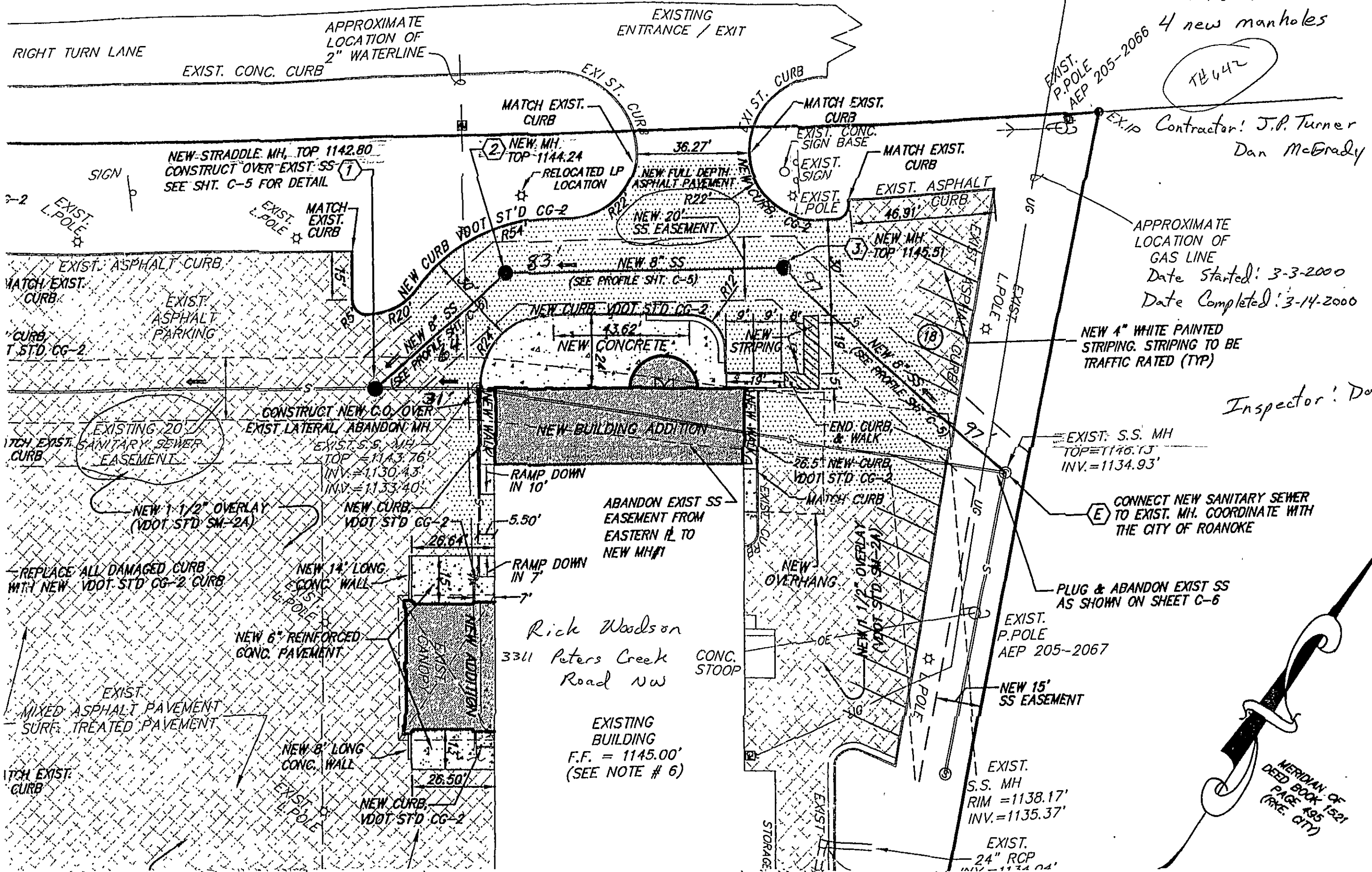


)



Sewer!
 244'-8" PVC
 4 new manholes

TE 642

HUGHES ASSOCIATE ARCHITECT

A PROFESSIONAL CORPORATION

Contractor: J.P. Turner
 Dan McGrady

Architecture
 Planning
 Consulting

11-30

656 Elm Avenue, S.W.
 P.O. Box 1034
 Roanoke, Virginia 240

APPROXIMATE LOCATION OF GAS LINE
 Date Started: 3-3-2000
 Date Completed: 3-14-2000

NEW 4" WHITE PAINTED STRIPING. STRIPING TO BE TRAFFIC RATED (TYP)

Inspector: Dan Conner

(540) 342-4002 TEL
 (540) 342-2060 FAX

Rick Woodson
 3311 Peters Creek Road NW

EXISTING BUILDING
 F.F. = 1145.00'
 (SEE NOTE # 6)

CONNECT NEW SANITARY SEWER TO EXIST. MH. COORDINATE WITH THE CITY OF ROANOKE

PLUG & ABANDON EXIST SS AS SHOWN ON SHEET C-6

MERIDIAN OF DEED BOOK 1521 PAGE 495 (PRE. CITY)

AND REMODEL OF
WOODSON HONDA
 3311 Peters Creek Rd.
 PETERS CREEK ROAD, N.W.