

IN THE CLERK'S OFFICE OF THE CIRCUIT COURT OF ROANOKE COUNTY, VIRGINIA, THIS PLAT WITH THE CERTIFICATE OF ACKNOWLEDGEMENT THERETO ANNEXED IS ADMITTED TO RECORD ON Dec. 30 1986, AT 11:00 O'CLOCK A.M.

TESTEE: ELIZABETH W. STOKES, CLERK

Fay Malone
DEPUTY CLERK

APPROVED: *Arnold Covert*
AGENT, ROANOKE COUNTY PLANNING COMMISSION

29 December 1986
DATE



NOTE: THIS PROPERTY IS NOT LOCATED IN A SPECIAL FLOOD HAZARD AREA AS DESIGNATED BY THE SECRETARY OF HOUSING AND URBAN DEVELOPMENT.

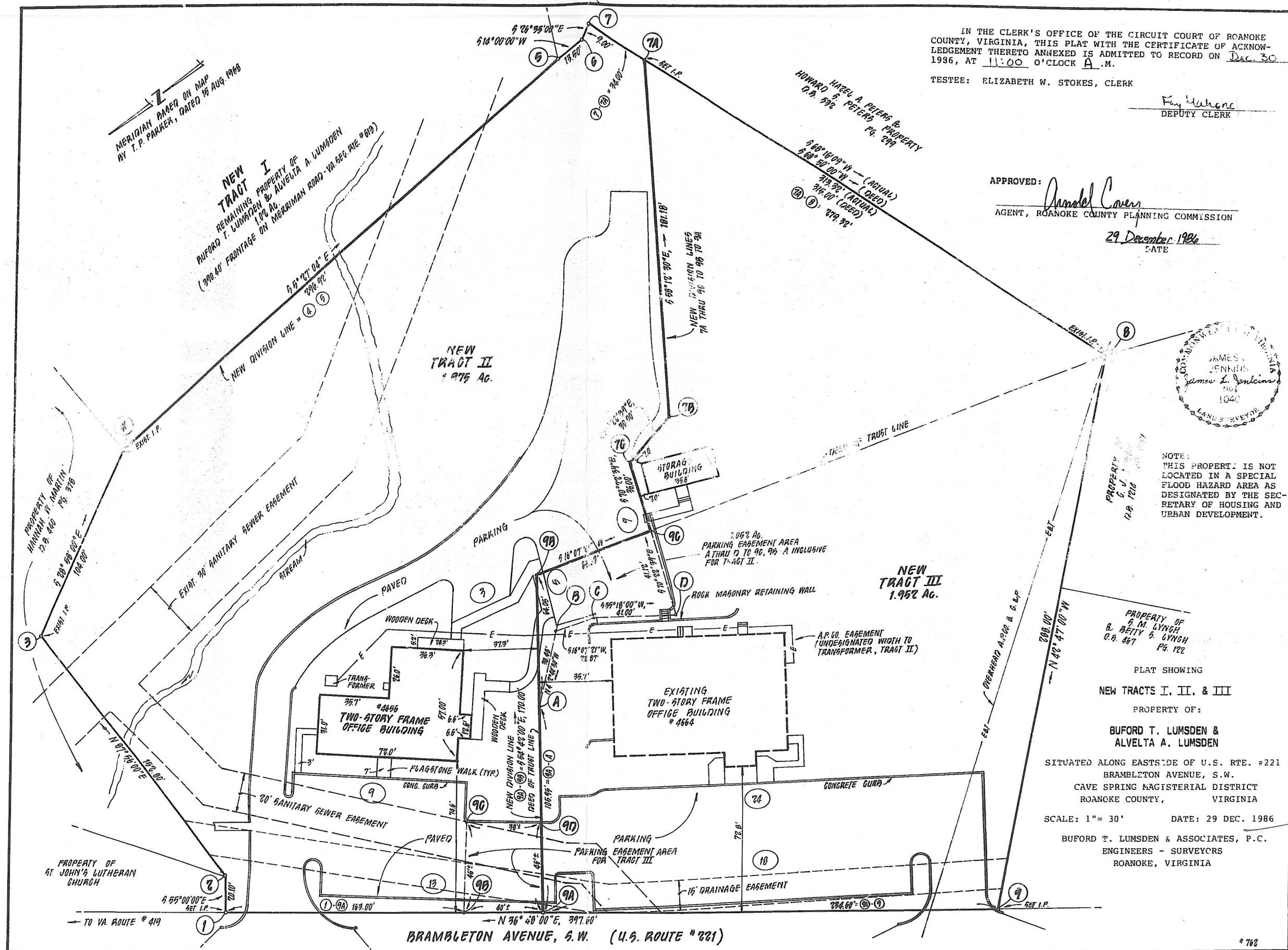
PROPERTY OF
S. M. LYNCH
& BETTY S. LYNCH
O.B. 467 PG. 122

PLAT SHOWING
NEW TRACTS I, II, & III
PROPERTY OF:
BUFORD T. LUMSDEN &
ALVELTA A. LUMSDEN

SITUATED ALONG EASTSIDE OF U.S. RTE. #221
BRAMBLETON AVENUE, S.W.
CAVE SPRING MAGISTERIAL DISTRICT
ROANOKE COUNTY, VIRGINIA

SCALE: 1" = 30' DATE: 29 DEC. 1986

BUFORD T. LUMSDEN & ASSOCIATES, P.C.
ENGINEERS - SURVEYORS
ROANOKE, VIRGINIA



MERIDIAN BASED ON MAP
BY T. P. PAKKIAH, DATED 15 AUG. 1988

NEW TRACT I
REMAINING PROPERTY OF
BUFORD T. LUMSDEN & ALVELTA A. LUMSDEN
(.990 AC) FRONTAGE ON MERIDIAN ROAD - VA REG. # 819

NEW TRACT II
1.975 AC.

NEW TRACT III
1.952 AC.

BRAMBLETON AVENUE, S.W. (U.S. ROUTE #221)

4702