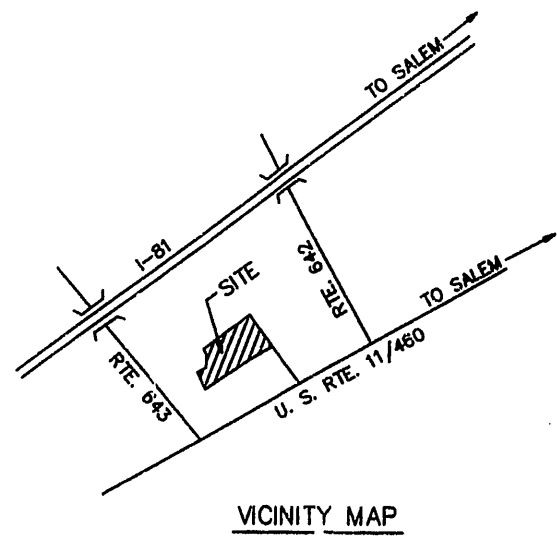
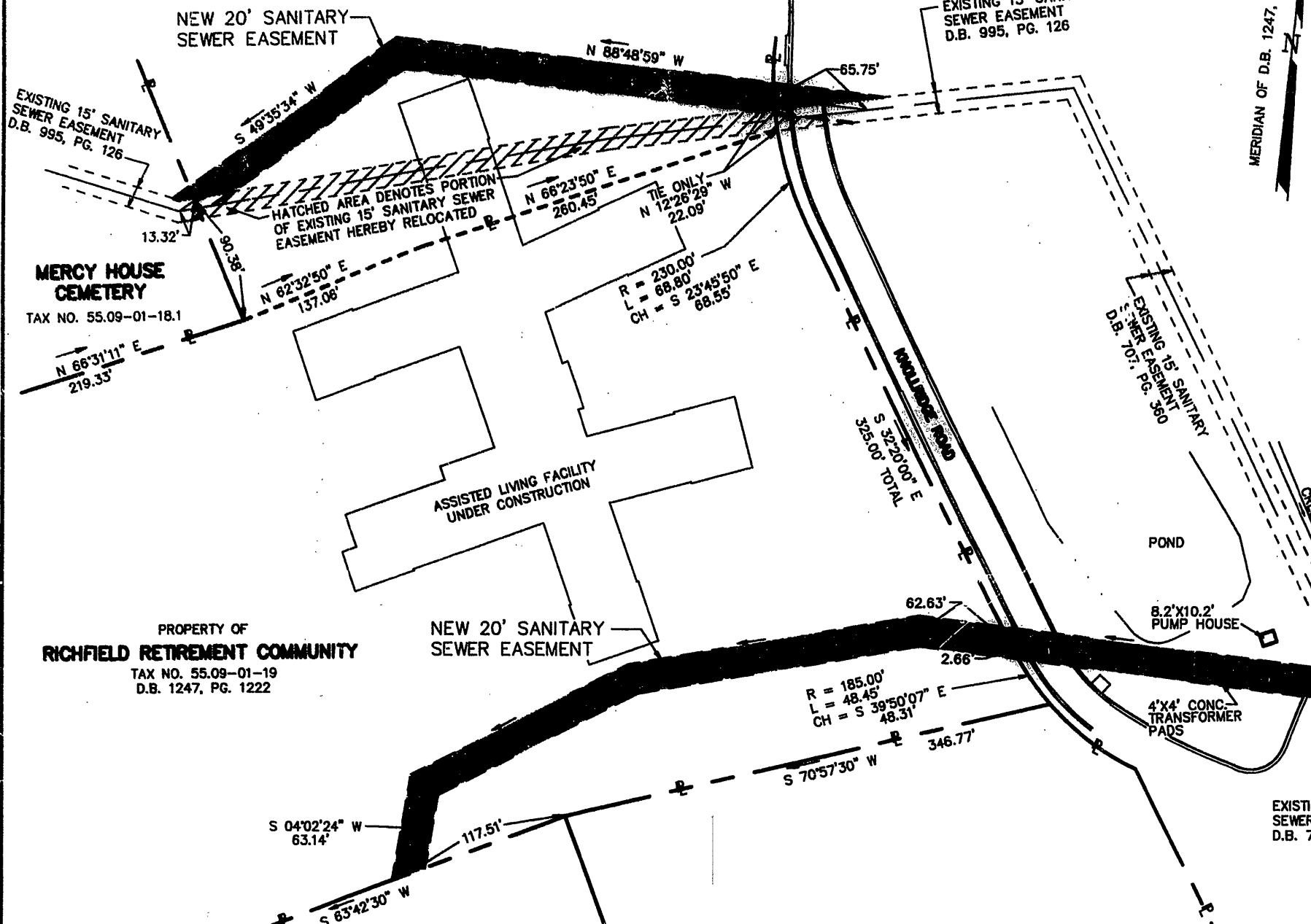


PROPERTY OF  
**RICHFIELD RETIREMENT COMMUNITY**  
TAX NO. 55.09-01-18  
D.B. 1176, PG. 682



PROPERTY OF  
**RICHFIELD RETIREMENT COMMUNITY**  
TAX NO. 55.09-01-16.1  
D.B. 1247, PG. 1222

PROPERTY OF  
**RICHFIELD RETIREMENT COMMUNITY**  
TAX NO. 55.09-01-19  
D.B. 1247, PG. 1222

PROPERTY OF  
**COMMONWEALTH OF VIRGINIA**  
TAX NO. 55.13-01-01  
D.B. 645, PG. 228  
D.B. 410, PG. 423

PROPERTY OF  
**RICHFIELD RETIREMENT COMMUNITY**  
TAX NO. 55.13-01-02.1  
D.B. 1176, PG. 682

VIRGINIA STATE POLICE HEADQUARTERS

RESUBDIVISION PLAT FOR  
**RICHFIELD RETIREMENT COMMUNITY**

SHOWING THE COMBINATION OF A 1.387 AC. PARCEL AND AN 8.317 AC. TO CREATE A 9.704 AC. PARCEL AND DEDICATION OF NEW 20' SANITARY SEWER EASEMENTS SITUATE OFF U. S. ROUTE 11

CATAWBA MAGISTERIAL DISTRICT  
ROANOKE COUNTY, VIRGINIA

**T. P. PARKER & SON**  
ENGINEERS - SURVEYORS - PLANNERS

TAX NO.: 55.09-01-18 & 19  
DRAWN: DAP/CADD  
CALC.: DAP

SCALE: 1" = 60'  
DECEMBER 21, 1992  
W.O. 92-2216

SHEET 2 OF 2  
P.B. 15 PG. 006

