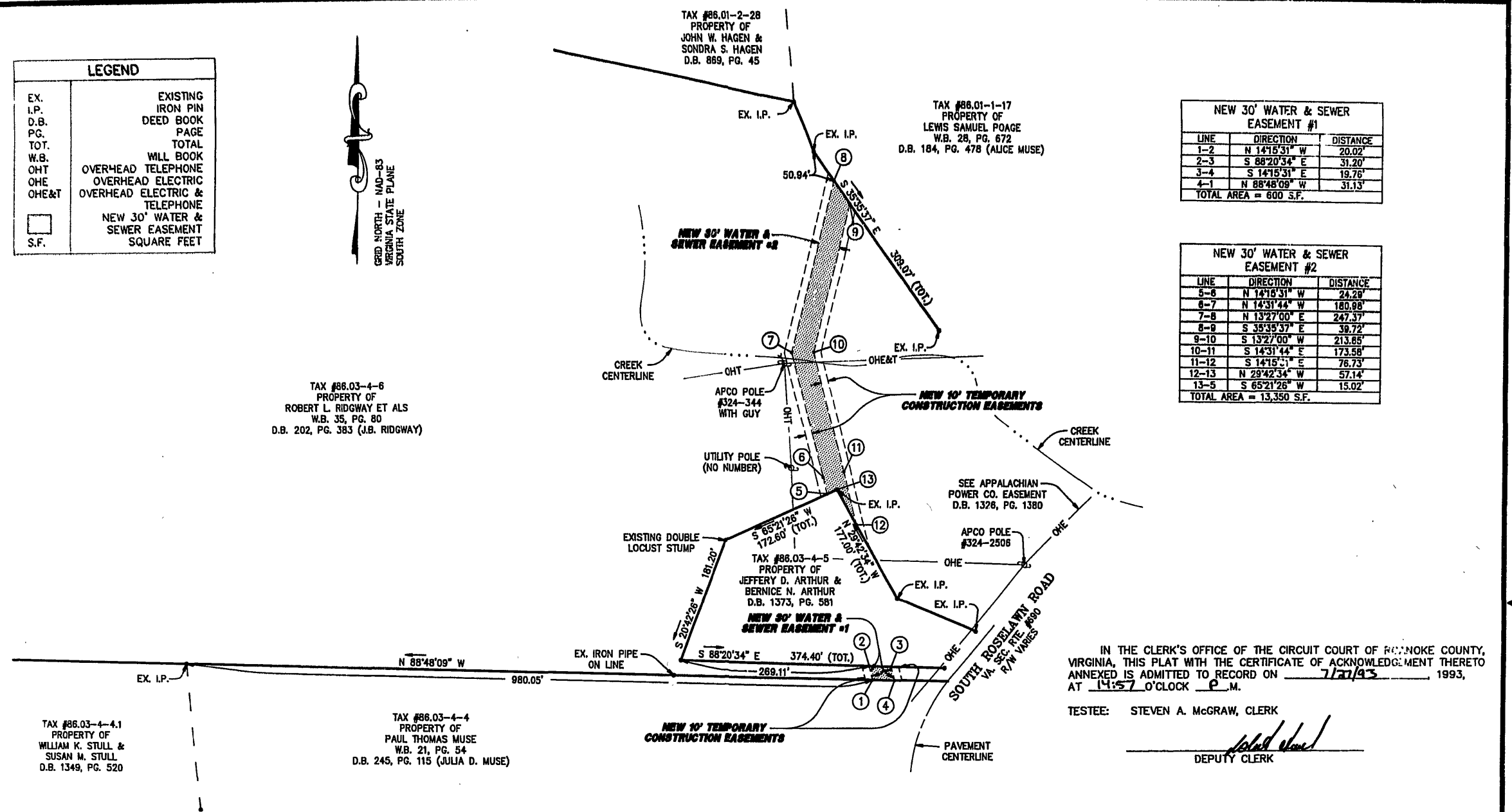


LEGEND	
EX.	EXISTING
I.P.	IRON PIN
D.B.	DEED BOOK
PG.	PAGE
TOT.	TOTAL
W.B.	WILL BOOK
OHT	OVERHEAD TELEPHONE
OHE	OVERHEAD ELECTRIC
OHE&T	OVERHEAD ELECTRIC & TELEPHONE
S.F.	NEW 30' WATER & SEWER EASEMENT SQUARE FEET



NEW 30' WATER & SEWER EASEMENT #1		
LINE	DIRECTION	DISTANCE
1-2	N 14°15'31\"	20.02'
2-3	S 88°20'34\"	31.20'
3-4	S 14°15'31\"	19.76'
4-1	N 88°48'08\"	31.13'
TOTAL AREA = 600 S.F.		

NEW 30' WATER & SEWER EASEMENT #2		
LINE	DIRECTION	DISTANCE
5-6	N 14°15'31\"	24.28'
6-7	N 14°31'44\"	180.98'
7-8	N 13°27'00\"	247.37'
8-9	S 35°35'37\"	39.72'
9-10	S 13°27'00\"	213.85'
10-11	S 14°31'44\"	173.56'
11-12	S 14°15'31\"	76.73'
12-13	N 29°42'34\"	57.14'
13-5	S 65°21'26\"	15.02'
TOTAL AREA = 13,350 S.F.		

IN THE CLERK'S OFFICE OF THE CIRCUIT COURT OF ROANOKE COUNTY, VIRGINIA, THIS PLAT WITH THE CERTIFICATE OF ACKNOWLEDGMENT THERETO ANNEXED IS ADMITTED TO RECORD ON 7/17/93 1993, AT 14:57 O'CLOCK P.M.

TESTEE: STEVEN A. MCGRAW, CLERK  
 DEPUTY CLERK *[Signature]*

PLAT SHOWING  
 NEW 30' WATER & SEWER EASEMENTS  
 AND NEW 10' TEMPORARY  
 CONSTRUCTION EASEMENTS

BEING GRANTED TO  
 THE COUNTY OF ROANOKE  
 BY  
 ROBERT LAWRENCE RIDGWAY ET ALS

ACROSS TAX #86.03-4-6

SCALE: 1" = 100' DATE: 7 JANUARY 1993  
 REVISED: 4 FEBRUARY 1993  
 LUMSDEN ASSOCIATES, P.C.  
 ENGINEERS-SURVEYORS-PLANNERS  
 ROANOKE, VIRGINIA

- NOTES:
- THIS PLAT IS FOR THE SOLE PURPOSE OF CREATING NEW WATER & SEWER AND TEMPORARY CONSTRUCTION EASEMENTS AS SHOWN HEREON AND DOES NOT CONSTITUTE AN ACTUAL BOUNDARY SURVEY.
  - THIS PLAT WAS PREPARED WITH THE BENEFIT OF A TITLE REPORT PREPARED BY MARTIN, HOPKINS, LEMON & EDWARDS, P.C., DATED 12 JUNE, 1992.
  - TOTAL AREA OF NEW WATER & SEWER EASEMENTS = 13,950 S.F.
  - THE NEW EASEMENTS AS SHOWN HEREON MAY BE AFFECTED BY THE FOLLOWING ENCUMBRANCES:
    - RIGHT OF WAY RESERVED, D.B. 202, PG. 383.
    - APPALACHIAN ELECTRIC POWER CO. EASEMENT, D.B. 248, PG. 78.
    - APPALACHIAN ELECTRIC POWER CO. EASEMENT, D.B. 471, PG. 388.
  - THE NEW EASEMENTS AS SHOWN HEREON ARE NOT AFFECTED BY THE FOLLOWING ENCUMBRANCE:
    - APPALACHIAN POWER CO. EASEMENT, D.B. 1326, PG. 1380.

