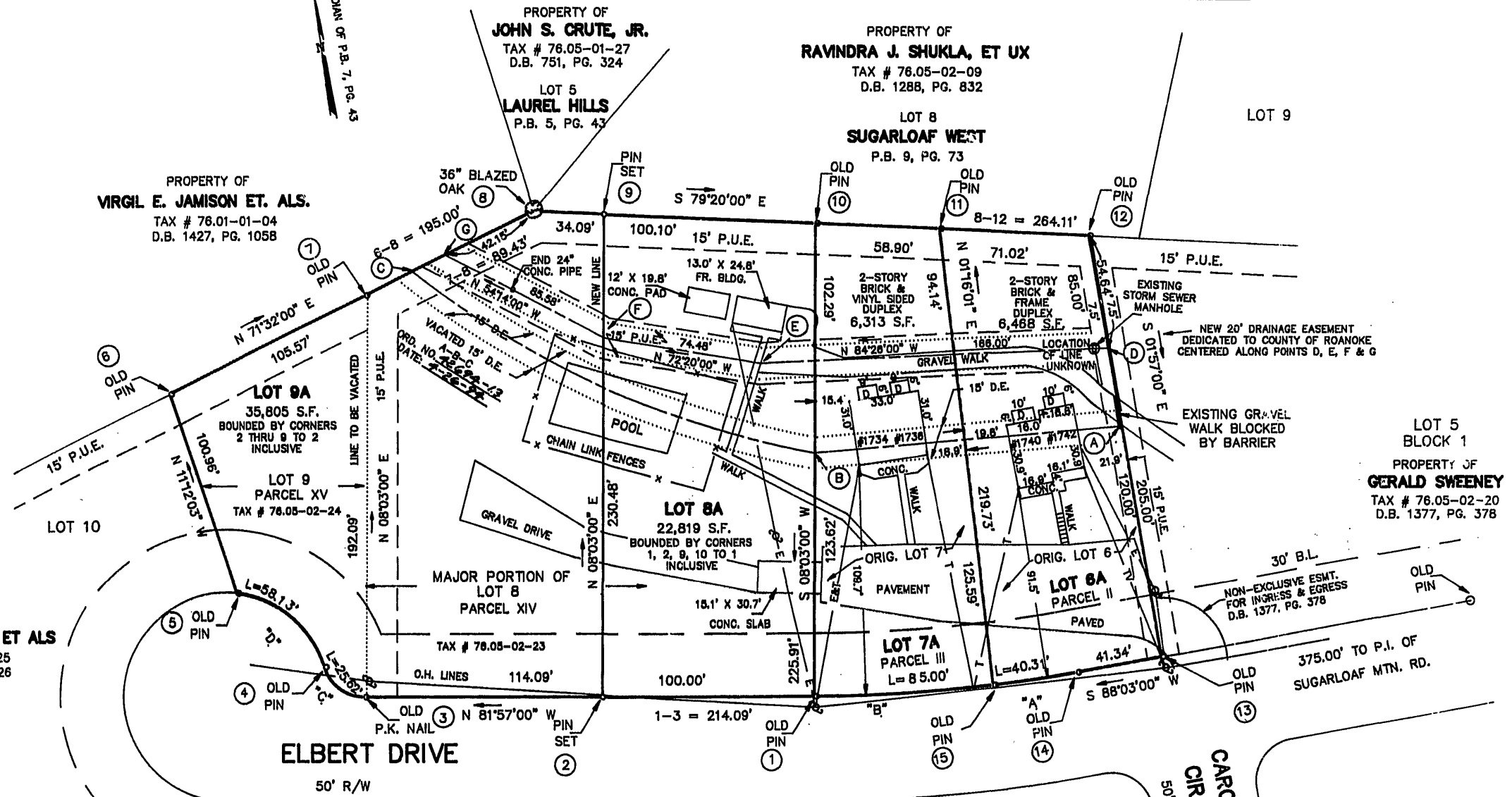


LOT	CURVE	RADIUS	LENGTH	TANGENT	CHORD	BEARING	DELTA
6A	"A"	717.95'	40.31'	20.16'	40.30'	S 89°39'30" W	03°13'00"
7A	"B"	717.95'	85.00'	42.55'	84.95'	N 85°20'30" W	06°47'00"
9A	"C"	20.00'	25.62'	14.91'	23.90'	N 45°15'03" W	73°23'54"
9A	"D"	50.00'	58.13'	32.85'	54.91'	N 41°51'31" W	66°36'50"

LEGEND

- PROPERTY CORNER
- R/W RIGHT OF WAY
- O.H. OVERHEAD
- UTILITY POLE & OVERHEAD LINES
- X- FENCE
- ESMT. EASEMENT
- P.U.E. PUBLIC UTILITY EASEMENT
- B.L. MINIMUM BUILDING LINE
- D.E. DRAINAGE EASEMENT
- E- ELECTRIC LINE
- T- TELEPHONE LINE
- TV- TV CABLE



REFERENCE MAPS:

- MAP OF SECTION 1, SUGARLOAF HIGHLANDS BY BUFORD T. LUMSDEN & ASSOC. DATED SEPT. 30, 1969 AND RECORDED IN P.B. 7, PG. 43.
- MAP RECORDED IN D.B. 898, PG. 208 BY BUFORD T. LUMSDEN & ASSOC. DATED MARCH 31, 1970 AND REVISED APRIL 27, 1970 AND RECORDED WITH AGREEMENT TO MODIFY EASEMENT LINES.

NOTES:

THE EXISTING 15 FT. WIDE DRAINAGE EASEMENT CENTERED ALONG POINTS A, B & C, ESTABLISHED BY SUBDIVISION OF SUGARLOAF HIGHLANDS, P.B. 7, PG. 43 IS VACATED BY COUNTY ORDINANCE NO. 42694-13 DATED 4-26-94

NEW 20' DRAINAGE EASEMENT CENTERED ALONG POINTS D, E, F & G DEDICATED TO ROANOKE COUNTY AND ENCOMPASSES 15 FT. PUBLIC UTILITY EASEMENT SHOWN ON MAP RECORDED IN D.B. 898, PG. 208.

NOTE: SWIMMING POOL AND EXISTING BUILDINGS ON LOTS 8A & 9A TO BE RAZED.

LOT 6A IS COMPOSED OF ORIGINAL LOT 6 AND 6,468 SQ. FT. OF LOT 8 TOTAL 16,096 SQ. FT.

LOT 7A IS COMPOSED OF ORIGINAL LOT 7 AND 6,313 SQ. FT. OF LOT 8 TOTAL 16,034 SQ. FT.

BOUNDARY SURVEY AND RESUBDIVISION FOR WALTER J. BAUMOEL, JR. & SUE G. BAUMOEL

OF LOTS 6, 7, 8 & 9, BLOCK 1, SECTION 1 SUGARLOAF HIGHLANDS, P.B. 7, PG. 43 CREATING HEREON LOTS 6A, 7A, 8A & 9A AND DEDICATION OF 20 FT. WIDE DRAINAGE EASEMENT WINDSOR HILLS MAGISTERIAL DISTRICT ROANOKE COUNTY, VIRGINIA

T. P. PARKER & SON ENGINEERS - SURVEYORS - PLANNERS

TAX # 76.05-02-23, 24  
CALC: LRD  
DRAWN: LRD/79  
N.B. JW-61

SCALE: 1" = 40'  
DATE: FEBRUARY 22, 1994  
W.O. 93-2019

