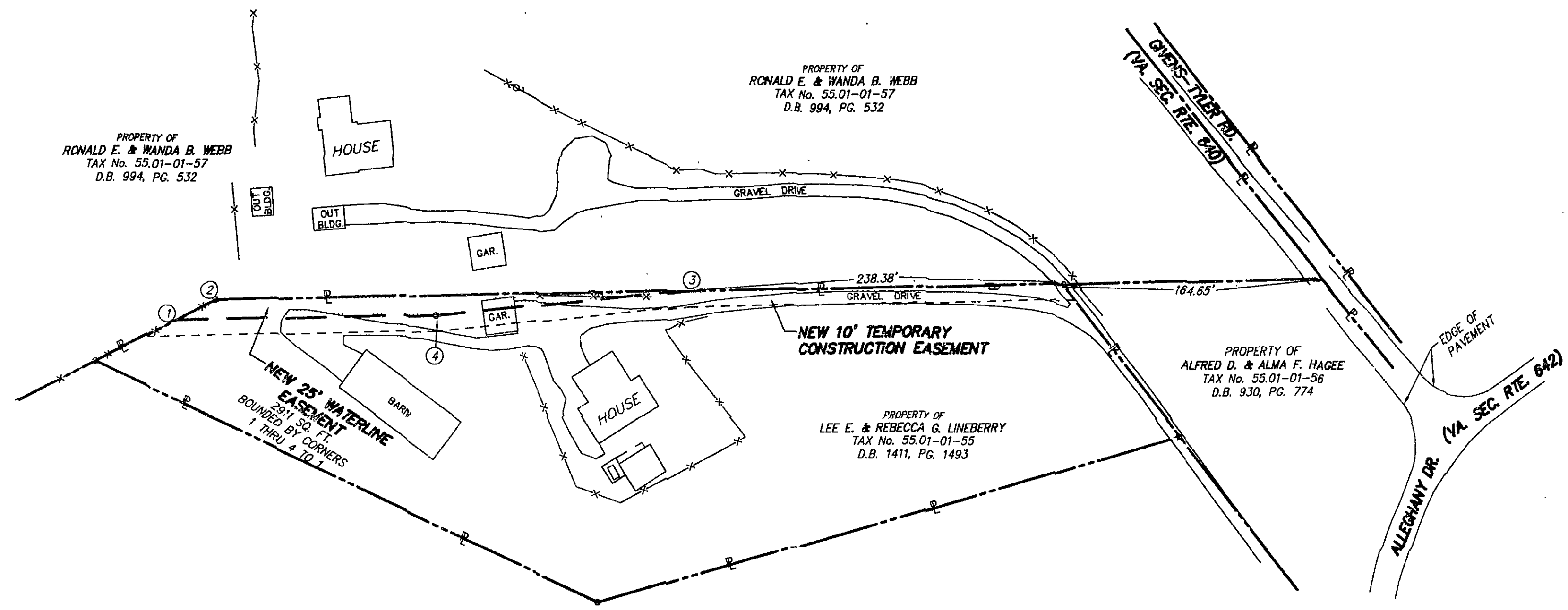


MERIDIAN OF VIRGINIA STATE  
PLANE COORDINATE SYSTEM  
SOUTH ZONE  
MAD 83



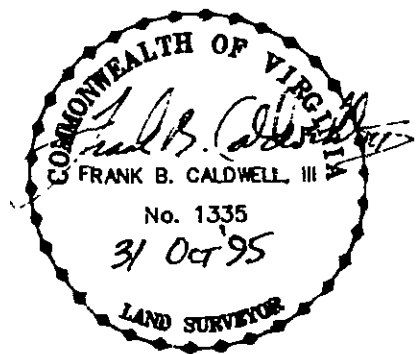
NOTES:  
1. THIS PLAT IS SUBJECT TO INFORMATION WHICH MAY BE DISCLOSED BY A TITLE REPORT BY A LICENSED ATTORNEY.  
2. METES AND BOUNDS DESCRIPTIONS SHOWN HEREON REPRESENT A COMPOSITE OF DEEDS, PLATS, CALCULATED INFORMATION AND FIELD TIES TO PROPERTY BOUNDARIES TO LOCATE THE POSITION OF THE EASEMENT IN RELATION TO THE BOUNDARIES. THIS SURVEY DOES NOT REFLECT A COMPLETE AND ACCURATE BOUNDARY SURVEY OF THE SUBJECT PROPERTIES.

LEGEND	
	PROPERTY LINE
	FENCE
	UTILITY POLE
	NEW WATERLINE EASEMENT
	GARAGE
	BUILDING

NEW 25' WATERLINE EASEMENT		
LINE	DIRECTION	DISTANCE
1-2	N 51°37'18" E	28.38'
2-3	N 77°05'18" E	300.32'
3-4	S 72°35'27" W	161.15'
4-5	S 77°14'21" W	165.29'
TOTAL AREA = 2,911 SQ. FT.		

IN THE CLERK'S OFFICE OF THE CIRCUIT COURT OF THE COUNTY OF ROANOKE, VIRGINIA THIS MAP WAS PRESENTED AND ADMITTED TO RECORD AT 3:59 O'CLOCK P.M. ON THIS 17 DAY OF March, 1995.

TESTE: STEVEN A. McGRAW  
CLERK  
BY:   
DEPUTY CLERK



EASEMENT PLAT FOR  
**COUNTY OF ROANOKE**

SHOWING NEW 25' WATERLINE EASEMENT AND A  
TEMPORARY CONSTRUCTION EASEMENT  
TO BE CONVEYED BY

LEE E. & REBECCA G. LINEBERRY

CATAWBA MAGISTERIAL DISTRICT  
ROANOKE COUNTY, VIRGINIA

T. P. PARKER & SON  
ENGINEERS - SURVEYORS - PLANNERS

TAX NO.: 55.01-01-55  
DRAWN: DAP  
CALC.: DAP  
SCALE: 1" = 50'  
OCTOBER 24, 1995  
W.O.: 92-1078

