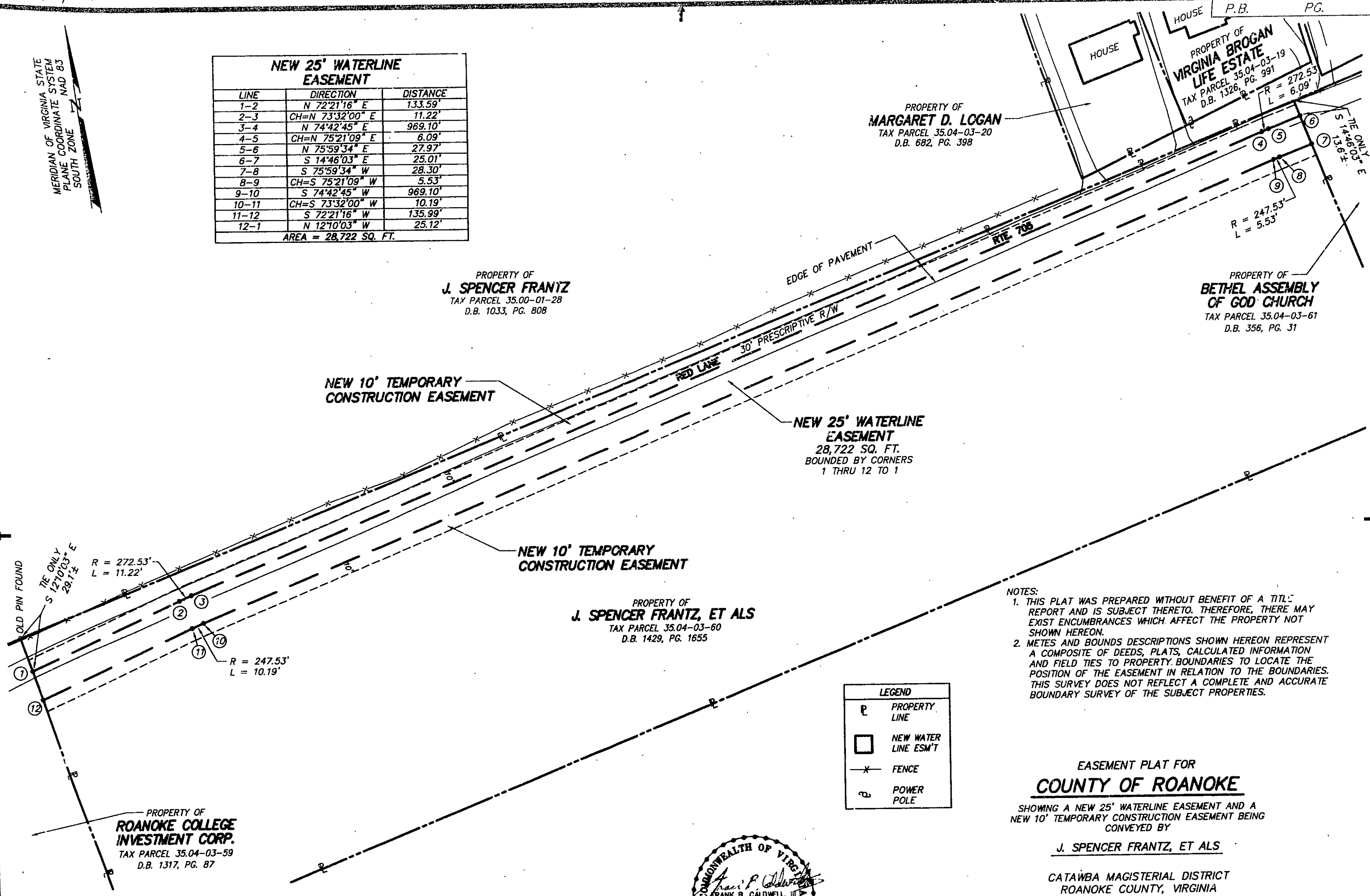


Martin Hopkins

MERIDIAN OF VIRGINIA STATE
PLANE COORDINATE SYSTEM
NAD 83
SOUTH ZONE

NEW 25' WATERLINE EASEMENT		
LINE	DIRECTION	DISTANCE
1-2	N 72°21'16" E	133.59'
2-3	CH=N 73°32'00" E	11.22'
3-4	N 74°42'45" E	969.10'
4-5	CH=N 75°21'09" E	6.09'
5-6	N 75°59'34" E	27.97'
6-7	S 14°46'03" E	25.01'
7-8	S 75°59'34" W	28.30'
8-9	CH=S 75°21'09" W	5.53'
9-10	S 74°42'45" W	969.10'
10-11	CH=S 73°32'00" W	10.19'
11-12	S 72°21'16" W	135.99'
12-1	N 12°10'03" W	25.12'
AREA = 28,722 SQ. FT.		



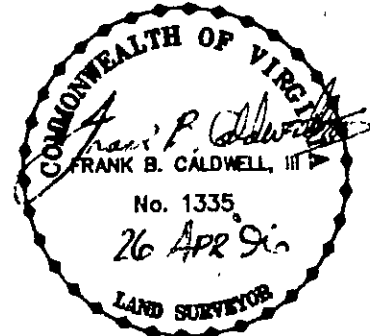
NOTES:
 1. THIS PLAT WAS PREPARED WITHOUT BENEFIT OF A TITLE REPORT AND IS SUBJECT THERETO. THEREFORE, THERE MAY EXIST ENCUMBRANCES WHICH AFFECT THE PROPERTY NOT SHOWN HEREON.
 2. METES AND BOUNDS DESCRIPTIONS SHOWN HEREON REPRESENT A COMPOSITE OF DEEDS, PLATS, CALCULATED INFORMATION AND FIELD TIES TO PROPERTY BOUNDARIES TO LOCATE THE POSITION OF THE EASEMENT IN RELATION TO THE BOUNDARIES. THIS SURVEY DOES NOT REFLECT A COMPLETE AND ACCURATE BOUNDARY SURVEY OF THE SUBJECT PROPERTIES.

LEGEND	
P	PROPERTY LINE
□	NEW WATER LINE ESM'T
-x-	FENCE
⊕	POWER POLE

EASEMENT PLAT FOR
COUNTY OF ROANOKE
 SHOWING A NEW 25' WATERLINE EASEMENT AND A
 NEW 10' TEMPORARY CONSTRUCTION EASEMENT BEING
 CONVEYED BY

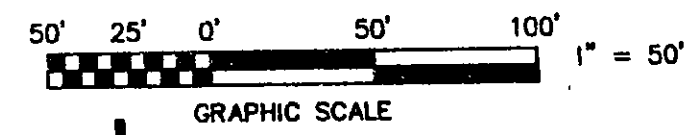
J. SPENCER FRANTZ, ET ALS
 CATAWBA MAGISTERIAL DISTRICT
 ROANOKE COUNTY, VIRGINIA
T. P. PARKER & SON
 ENGINEERS - SURVEYORS - PLANNERS

TAX NO.: 35.04-03-60
 DRAWN: DAP
 CALC.: DAP
 SCALE: 1" = 50'
 APRIL 19, 1996
 W.O.: 92-1078



IN THE CLERK'S OFFICE OF THE CIRCUIT COURT OF THE COUNTY OF ROANOKE, VIRGINIA THIS MAP WAS PRESENTED AND ADMITTED TO RECORD AT 11:30 O'CLOCK A.M. ON THIS 22 DAY OF November, 1996.

TESTE: STEVEN A. MCGRAW
 CLERK
 BY: Christa A. Boehringer
 DEPUTY CLERK



CLOSED BY CLW