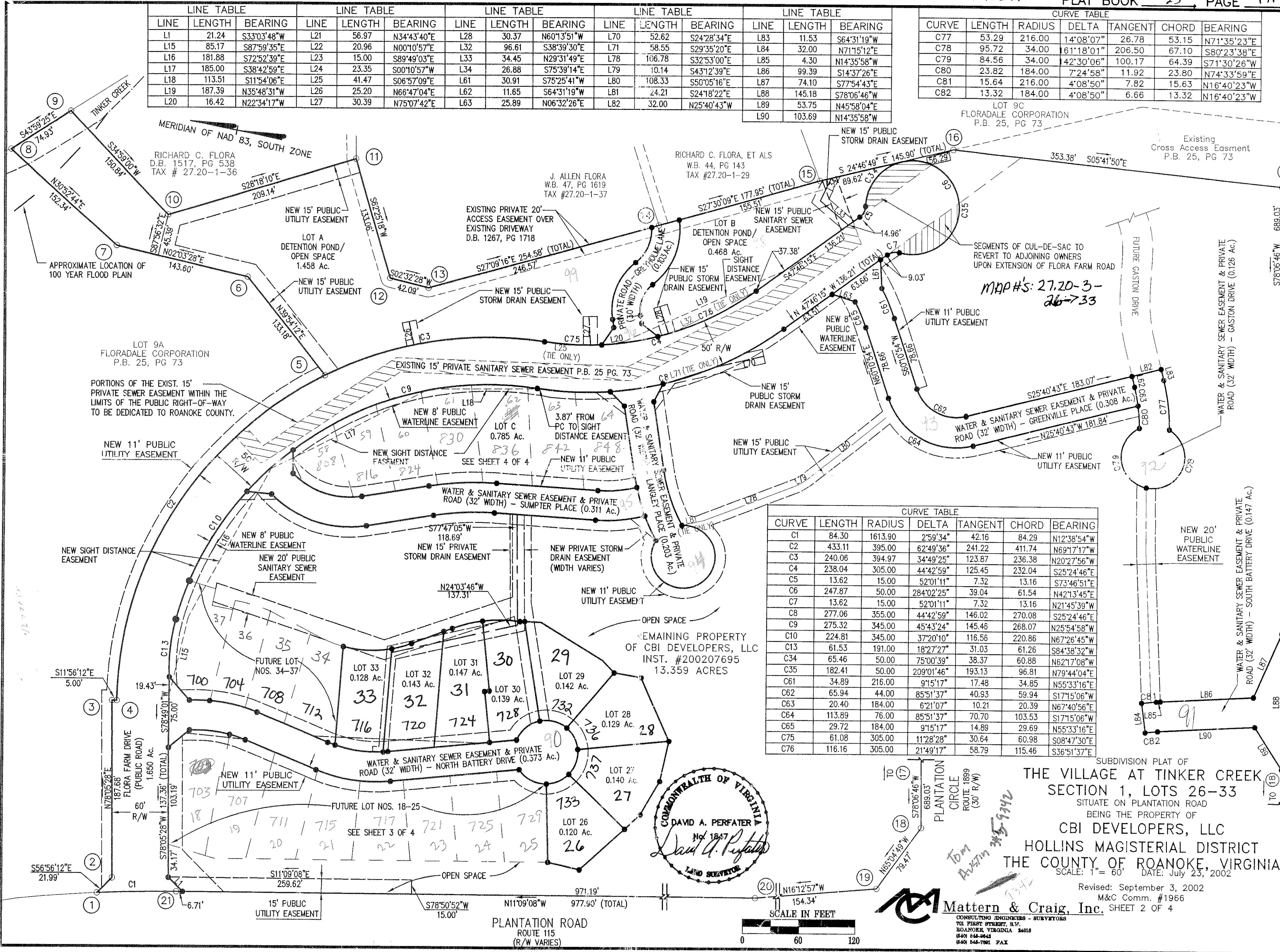
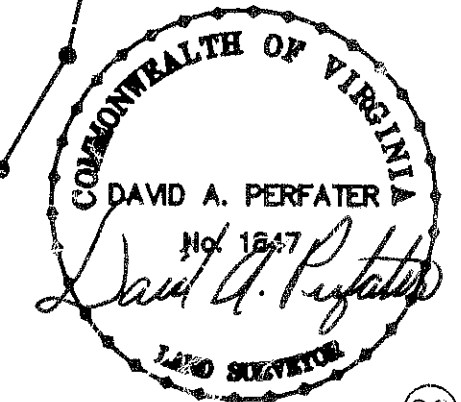


LINE TABLE			LINE TABLE			LINE TABLE			LINE TABLE			LINE TABLE		
LINE	LENGTH	BEARING	LINE	LENGTH	BEARING	LINE	LENGTH	BEARING	LINE	LENGTH	BEARING	LINE	LENGTH	BEARING
L1	21.24	S33°03'48"W	L21	56.97	N34°43'40"E	L28	30.37	N60°13'51"W	L70	52.62	S24°28'34"E	L83	11.53	S64°31'19"W
L15	85.17	S87°59'35"E	L22	20.96	N00°10'57"E	L32	96.61	S38°39'30"E	L71	58.55	S29°35'20"E	L84	32.00	N71°15'12"E
L16	181.88	S72°52'39"E	L23	15.00	S89°49'03"E	L33	34.45	N29°31'49"E	L78	106.78	S32°53'00"E	L85	4.30	N14°35'58"W
L17	185.00	S38°42'59"E	L24	23.35	S00°10'57"W	L34	26.88	S75°39'14"E	L79	10.14	S43°12'39"E	L86	99.39	S14°37'26"E
L18	113.51	S11°54'06"E	L25	41.47	S06°57'09"E	L34	26.88	S75°39'14"E	L80	108.33	S50°05'16"E	L87	74.10	S77°54'43"E
L19	187.39	N35°48'31"W	L26	25.20	N66°47'04"E	L62	11.65	S64°31'19"W	L81	24.21	S24°18'22"E	L88	145.18	S78°06'46"W
L20	16.42	N22°34'17"W	L27	30.39	N75°07'42"E	L63	25.89	N06°32'26"E	L82	32.00	N25°40'43"W	L89	53.75	N45°58'04"E
									L90	103.69	N14°35'58"W			

CURVE TABLE						
CURVE	LENGTH	RADIUS	DELTA	TANGENT	CHORD	BEARING
C77	53.29	216.00	14°08'07"	26.78	53.15	N71°35'23"E
C78	95.72	34.00	61°18'01"	206.50	67.10	S80°23'38"E
C79	84.56	34.00	42°30'06"	100.17	64.39	S71°30'26"W
C80	23.82	184.00	7°24'58"	11.92	23.80	N74°33'59"E
C81	15.64	216.00	4°08'50"	7.82	15.63	N16°40'23"W
C82	13.32	184.00	4°08'50"	6.66	13.32	N16°40'23"W



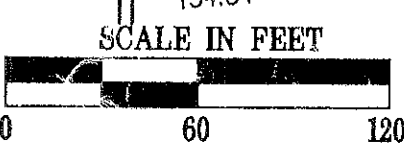
CURVE TABLE						
CURVE	LENGTH	RADIUS	DELTA	TANGENT	CHORD	BEARING
C1	84.30	1613.90	2°59'34"	42.16	84.29	N12°38'54"W
C2	433.11	395.00	62°49'36"	241.22	411.74	N69°17'17"W
C3	240.06	394.97	34°49'25"	123.87	236.38	N20°27'56"W
C4	238.04	305.00	44°42'59"	125.45	232.04	S25°24'46"E
C5	13.62	15.00	52°01'11"	7.32	13.16	S73°46'51"E
C6	247.87	50.00	284°02'25"	39.04	61.54	N42°13'45"E
C7	13.62	15.00	52°01'11"	7.32	13.16	N21°45'39"W
C8	277.06	355.00	44°42'59"	146.02	270.08	S25°24'46"E
C9	275.32	345.00	45°43'24"	145.46	268.07	N25°54'58"W
C10	224.81	345.00	37°20'10"	116.56	220.86	N67°26'45"W
C13	61.53	191.00	18°27'27"	31.03	61.26	S84°38'32"W
C34	65.46	50.00	75°00'39"	38.37	60.88	N62°17'08"W
C35	182.41	50.00	209°01'46"	193.13	96.81	N79°44'04"E
C61	34.89	216.00	9°15'17"	17.48	34.85	N55°33'16"E
C62	65.94	44.00	85°51'37"	40.93	59.94	S17°15'06"W
C63	20.40	184.00	6°21'07"	10.21	20.39	N67°40'56"E
C64	113.89	76.00	85°51'37"	70.70	103.53	S17°15'06"W
C65	29.72	184.00	9°15'17"	14.89	29.69	N55°33'16"E
C75	61.08	305.00	11°28'28"	30.64	60.98	S08°47'30"E
C76	116.16	305.00	21°49'17"	58.79	115.46	S36°51'37"E



**Mattern & Craig, Inc.**  
 CONSULTING ENGINEERS - SURVEYORS  
 704 FIRST STREET, S.W.  
 ROANOKE, VIRGINIA 24016  
 (540) 844-0643  
 (540) 844-7061 FAX

SUBDIVISION PLAT OF  
**THE VILLAGE AT TINKER CREEK**  
 SECTION 1, LOTS 26-33  
 SITUATE ON PLANTATION ROAD  
 BEING THE PROPERTY OF  
**CBI DEVELOPERS, LLC**  
 HOLLINS MAGISTERIAL DISTRICT  
**THE COUNTY OF ROANOKE, VIRGINIA**  
 SCALE: 1" = 60' DATE: July 23, 2002

Revised: September 3, 2002  
 M&C Comm. #1966  
 SHEET 2 OF 4



Please check for updates to this drawing on the M&C website at www.matterncraig.com