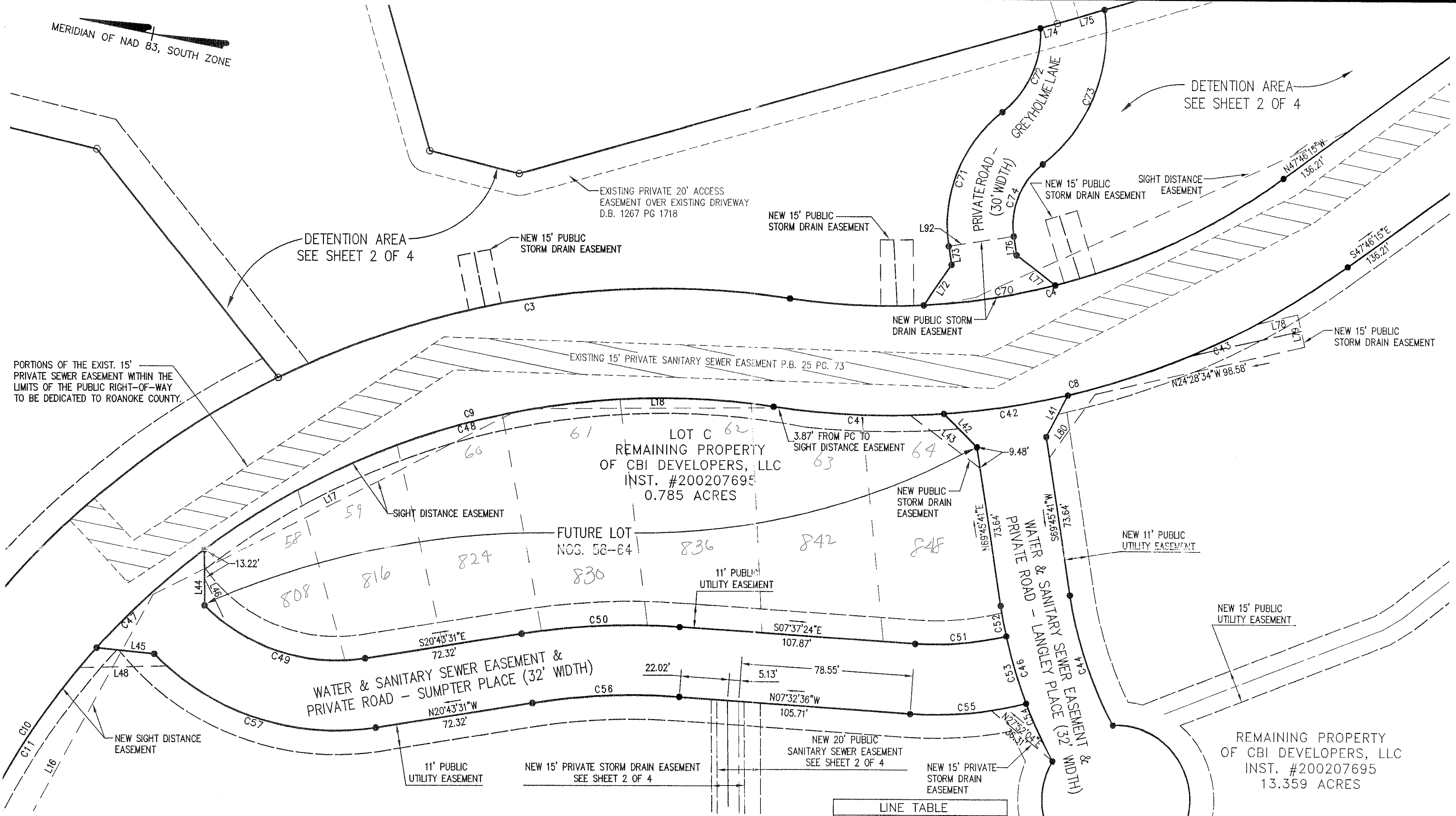


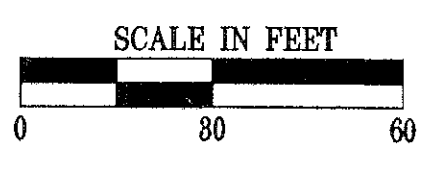
MERIDIAN OF NAD 83, SOUTH ZONE



CURVE TABLE						
CURVE	LENGTH	RADIUS	DELTA	TANGENT	CHORD	BEARING
C3	240.06	394.97	34°49'25"	123.87	236.38	N20°27'56"W
C4	238.04	305.00	44°42'59"	125.45	232.04	S25°24'46"E
C8	277.06	355.00	44°42'59"	146.02	270.08	S25°24'46"E
C9	275.32	345.00	45°43'24"	145.46	268.07	N25°54'58"W
C10	224.81	345.00	37°20'10"	116.56	220.86	N67°26'45"W
C11	181.39	345.00	30°07'25"	92.84	179.30	N63°50'22"W
C41	77.85	355.00	12°33'54"	39.08	77.70	S09°20'13"E
C42	57.24	355.00	9°14'20"	28.68	57.18	S20°14'20"E
C43	141.96	355.00	22°54'45"	71.94	141.02	S36°18'53"E
C44	63.02	184.00	19°37'30"	31.82	62.72	S59°56'55"W
C45	180.28	34.00	303°47'57"	18.15	32.03	S42°31'08"E
C46	75.47	216.00	20°01'07"	38.12	75.09	S59°45'07"W
C47	66.81	345.00	11°05'42"	33.51	66.70	N54°19'31"W
C48	275.32	345.00	45°43'24"	145.46	268.07	N25°54'58"W
C49	80.32	84.00	54°47'18"	43.53	77.30	S06°40'08"W
C50	72.26	316.00	13°06'06"	36.29	72.10	N14°10'27"W

CURVE TABLE CONTINUED						
CURVE	LENGTH	RADIUS	DELTA	TANGENT	CHORD	BEARING
C51	41.83	134.00	17°53'07"	21.09	41.66	S16°33'58"E
C52	14.36	216.00	3°48'33"	7.18	14.36	S67°51'24"W
C53	32.06	216.00	8°30'15"	16.06	32.03	S61°42'00"W
C54	29.05	216.00	7°42'19"	14.55	29.03	S53°35'43"W
C55	53.38	166.00	18°25'25"	28.92	53.15	S16°50'07"E
C56	67.11	296.95	12°56'58"	33.70	66.97	N14°05'17"W
C57	110.92	116.00	54°47'18"	60.11	106.75	S06°40'08"W
C70	60.80	305.00	11°25'14"	30.50	60.69	S20°14'21"E
C71	69.02	65.00	60°50'35"	38.17	65.83	N79°53'50"W
C72	43.28	45.00	55°06'27"	23.48	41.63	S77°01'47"E
C73	78.91	75.00	60°16'48"	43.55	75.32	S79°36'57"E
C74	37.17	35.00	60°50'35"	20.55	35.44	N79°53'50"W

LINE TABLE		
LINE	LENGTH	BEARING
L16	181.88	S72°52'39"E
L17	185.00	S38°42'59"E
L18	113.51	S11°54'06"E
L41	21.49	N74°21'53"W
L42	21.49	N33°53'30"E
L43	39.84	N25°23'10"E
L44	25.63	S78°00'30"W
L45	26.43	N05°39'57"W
L46	19.73	S52°31'47"W
L47	34.55	N52°27'23"W
L48	39.48	N12°50'48"W
L72	22.39	S67°10'56"E
L73	8.78	N69°40'52"E
L74	8.02	S27°09'16"E
L75	22.44	S27°30'09"E
L76	8.78	S69°40'52"W
L77	22.50	S26°32'41"W
L78	19.10	S24°28'34"E
L79	15.00	S65°31'26"W
L80	35.91	N65°55'18"W
L92	30.00	S20°19'08"W



SUBDIVISION PLAT OF  
**THE VILLAGE AT TINKER CREEK**  
 SECTION 1, LOTS 26-33  
 SITUATE ON PLANTATION ROAD  
 BEING THE PROPERTY OF  
**CBI DEVELOPERS, LLC**  
 HOLLINS MAGISTERIAL DISTRICT  
**THE COUNTY OF ROANOKE, VIRGINIA**  
 SCALE: 1" = 30' DATE: July 23, 2002  
 Revised: September 3, 2002  
 M&C Comm. #1966  
 SHEET 4 OF 4

**Mattern & Craig, Inc.**  
 CONSULTING ENGINEERS - SURVEYORS  
 701 FIRST STREET, S.W.  
 ROANOKE, VIRGINIA 24018  
 (844) 844-9943  
 (844) 844-7001 FAX