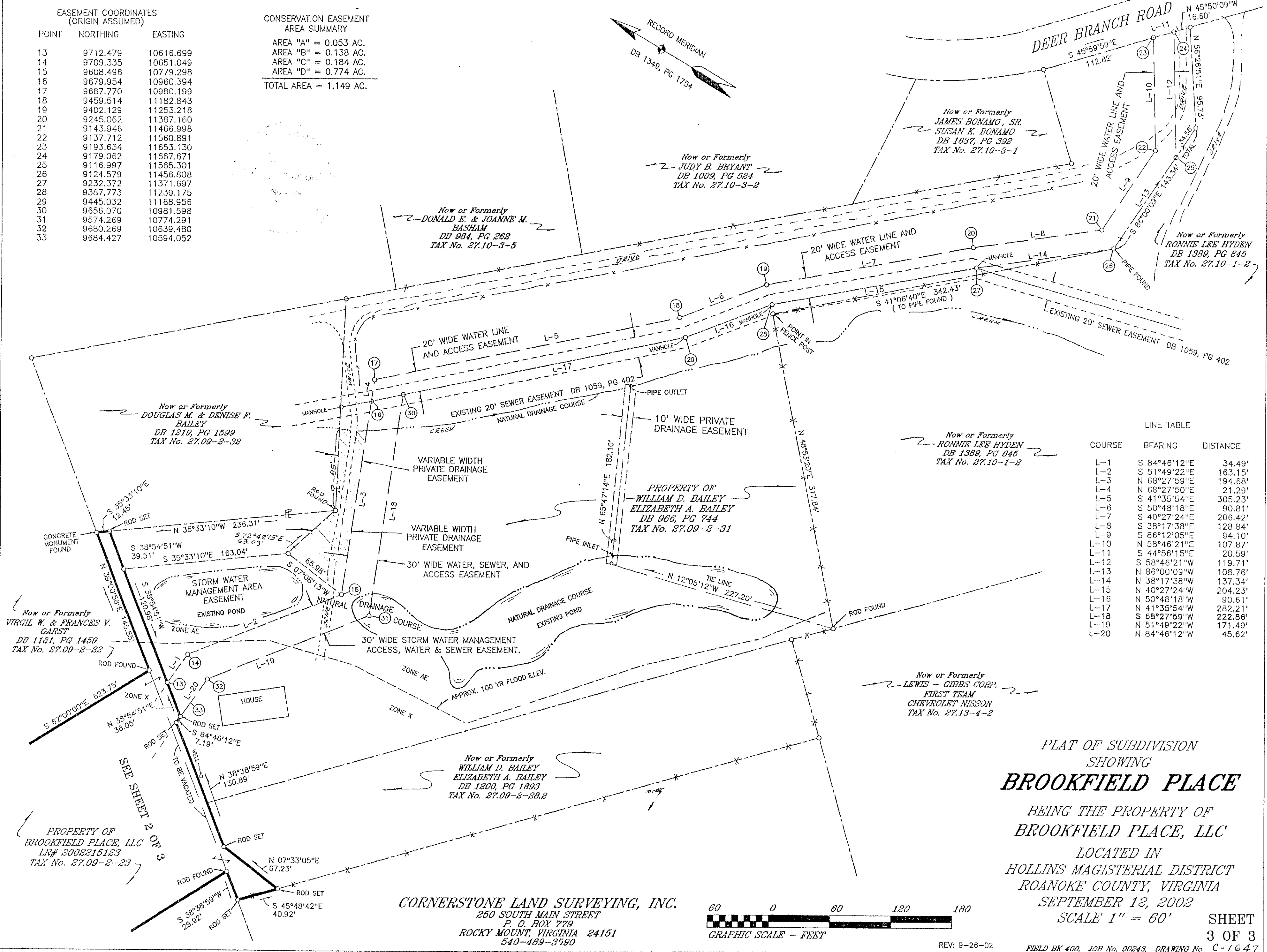
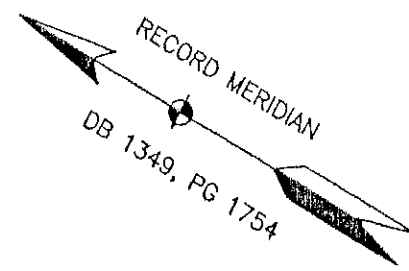


EASEMENT COORDINATES  
(ORIGIN ASSUMED)

POINT	NORTHING	EASTING
13	9712.479	10616.699
14	9709.335	10651.049
15	9608.496	10779.298
16	9679.954	10960.394
17	9687.770	10980.199
18	9459.514	11182.843
19	9402.129	11253.218
20	9245.062	11387.160
21	9143.946	11466.998
22	9137.712	11560.891
23	9193.634	11653.130
24	9179.062	11667.671
25	9116.997	11565.301
26	9124.579	11456.808
27	9232.372	11371.697
28	9387.773	11239.175
29	9445.032	11168.956
30	9656.070	10981.598
31	9574.269	10774.291
32	9680.269	10639.480
33	9684.427	10594.052

CONSERVATION EASEMENT  
AREA SUMMARY

AREA "A" = 0.053 AC.  
 AREA "B" = 0.138 AC.  
 AREA "C" = 0.184 AC.  
 AREA "D" = 0.774 AC.  
 TOTAL AREA = 1.149 AC.



LINE TABLE

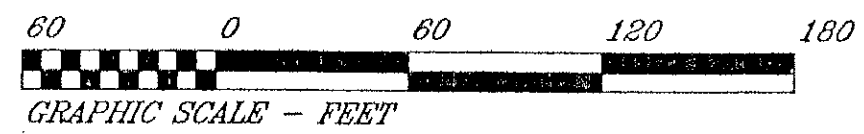
COURSE	BEARING	DISTANCE
L-1	S 84°46'12"E	34.49'
L-2	S 51°49'22"E	163.15'
L-3	N 68°27'59"E	194.68'
L-4	N 68°27'50"E	21.29'
L-5	S 41°35'54"E	305.23'
L-6	S 50°48'18"E	90.81'
L-7	S 40°27'24"E	206.42'
L-8	S 38°17'38"E	128.84'
L-9	S 86°12'05"E	94.10'
L-10	N 58°46'21"E	107.87'
L-11	S 44°56'15"E	20.59'
L-12	S 58°46'21"W	119.71'
L-13	N 86°00'09"W	108.76'
L-14	N 38°17'38"W	137.34'
L-15	N 40°27'24"W	204.23'
L-16	N 50°48'18"W	90.61'
L-17	N 41°35'54"W	282.21'
L-18	S 68°27'59"W	222.86'
L-19	N 51°49'22"W	171.49'
L-20	N 84°46'12"W	45.62'

PLAT OF SUBDIVISION  
SHOWING  
**BROOKFIELD PLACE**

BEING THE PROPERTY OF  
BROOKFIELD PLACE, LLC  
LOCATED IN  
HOLLINS MAGISTERIAL DISTRICT  
ROANOKE COUNTY, VIRGINIA  
SEPTEMBER 12, 2002  
SCALE 1" = 60'

SHEET  
3 OF 3

CORNERSTONE LAND SURVEYING, INC.  
250 SOUTH MAIN STREET  
P. O. BOX 779  
ROCKY MOUNT, VIRGINIA 24151  
540-489-3590



REV: 9-26-02

FIELD BK 400, JOB No. 00243, DRAWING No. C-1647