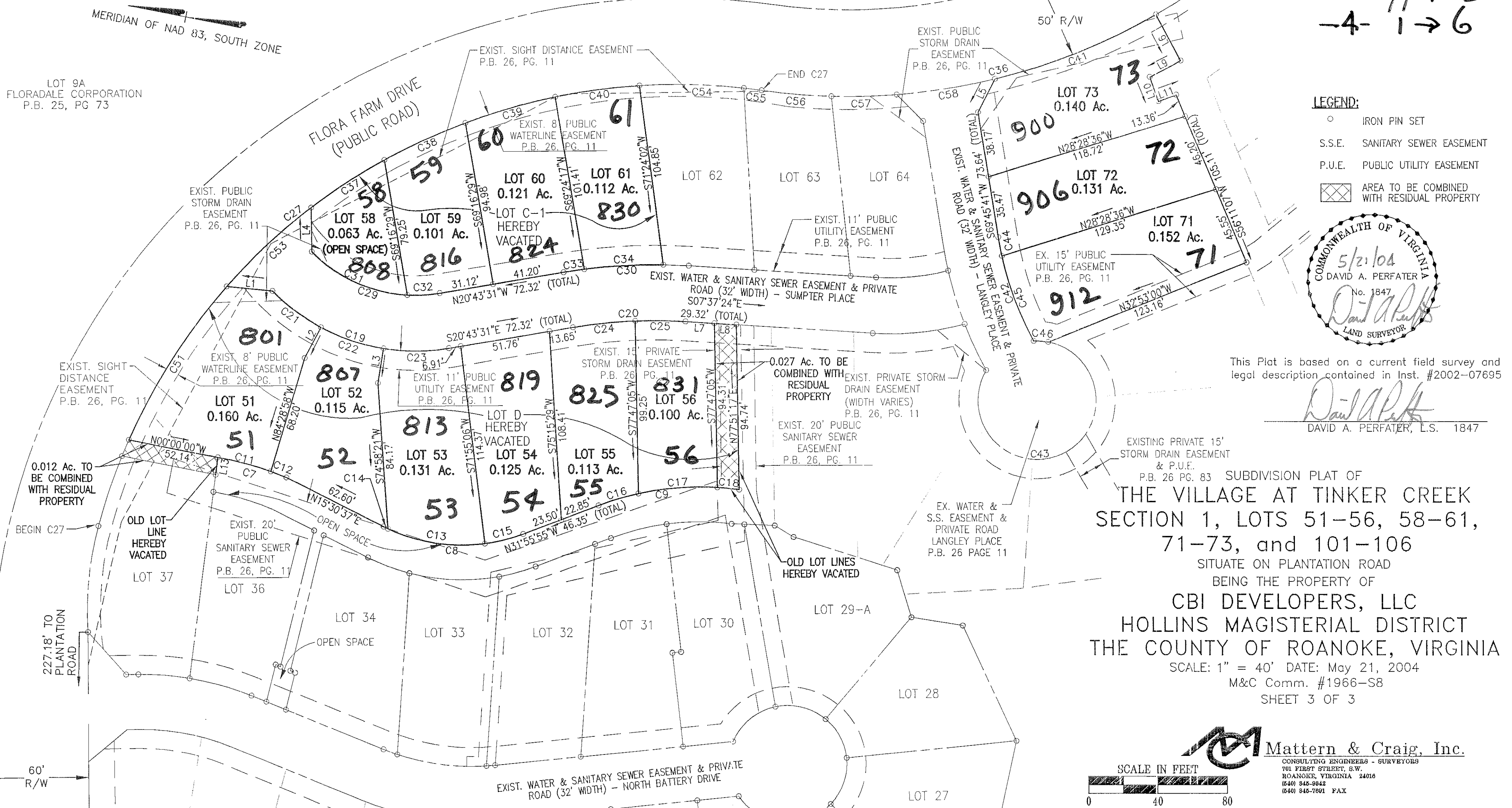


LINE	LENGTH	BEARING
L1	26.43	N05°39'57"W
L2	20.00	N73°11'43"W
L3	20.00	S87°58'09"W
L4	25.63	N78°00'30"E
L5	21.49	N74°21'53"W
L6	30.05	S50°35'34"W
L7	16.67	S07°37'24"E
L8	12.65	S07°37'24"E
L9	20.19	N39°24'26"W
L10	14.88	S58°56'26"W
L11	10.82	S31°03'06"E
L12	7.06	S11°56'09"E
L13	10.01	N86°17'08"E

CURVE TABLE							CURVE TABLE							CURVE TABLE						
CURVE	LENGTH	RADIUS	DELTA	TANGENT	CHORD	BEARING	CURVE	LENGTH	RADIUS	DELTA	TANGENT	CHORD	BEARING	CURVE	LENGTH	RADIUS	DELTA	TANGENT	CHORD	BEARING
C7	41.19	179.16	13°10'22"	20.69	41.10	N05°00'14"E	C27	500.13	345.00	83°03'33"	305.55	457.48	S44°36'03"E	C53	66.81	345.00	11°05'42"	33.51	66.70	N54°19'31"W
C8	82.81	100.00	47°26'39"	43.94	80.46	S08°12'39"E	C29	80.32	84.00	54°47'18"	43.53	77.30	S06°40'08"W	C54	60.08	345.00	9°58'38"	30.11	60.00	N09°45'35"W
C9	82.30	165.23	28°32'17"	42.02	81.45	N17°39'44"W	C30	72.26	316.00	13°06'06"	36.29	72.10	N14°10'27"W	C55	10.33	345.00	1°42'58"	5.17	10.33	N03°54'46"W
C10	31.72	34.00	53°27'17"	17.12	30.58	N36°36'03"E	C31	61.62	84.00	42°01'49"	32.27	60.25	S13°02'52"W	C56	40.27	355.00	6°29'55"	20.15	40.24	S06°18'14"E
C11	31.56	179.16	10°05'34"	15.82	31.52	N03°27'50"E	C32	18.70	84.00	12°45'28"	9.39	18.67	S14°20'46"E	C57	37.58	355.00	6°03'57"	18.81	37.57	S12°35'11"E
C12	9.63	179.16	3°04'49"	4.82	9.63	N10°03'01"E	C33	12.03	316.00	2°10'53"	6.02	12.03	N19°38'04"W	C58	57.24	355.00	9°14'20"	28.68	57.18	S20°14'20"E
C13	57.19	100.00	32°45'57"	29.40	56.41	S02°28'43"E	C34	45.51	316.00	8°15'05"	22.79	45.47	N14°25'05"W							
C14	2.80	100.00	1°36'24"	1.40	2.80	S14°42'28"W	C36	277.06	355.00	44°42'59"	146.02	270.08	S25°24'46"E							
C15	22.81	100.00	13°04'17"	11.46	22.76	S25°23'50"E	C37	50.55	345.00	8°23'42"	25.32	50.50	N44°34'49"W							
C16	23.98	165.23	8°19'00"	12.01	23.96	N27°46'22"W	C38	51.56	345.00	8°33'47"	25.83	51.51	N36°06'05"W							
C17	45.73	165.23	15°51'26"	23.01	45.58	N15°41'10"W	C39	53.87	345.00	8°56'48"	26.99	53.82	N27°20'47"W							
C18	12.59	165.23	4°21'51"	6.30	12.58	N05°34'31"W	C40	48.92	345.00	8°07'29"	24.50	48.88	N18°48'38"W							
C19	110.92	116.00	54°47'18"	60.11	106.75	S06°40'08"W	C41	100.33	355.00	16°11'37"	50.50	100.00	S32°57'19"E							
C20	64.94	284.00	13°06'06"	32.61	64.80	N14°10'27"W	C42	63.02	184.00	19°37'30"	31.82	62.72	S59°56'55"W							
C21	34.95	116.00	17°15'44"	17.61	34.82	S25°25'55"W	C43	180.28	34.00	∞	---	32.03	S42°31'08"E							
C22	38.13	116.00	18°50'00"	19.24	37.96	S07°23'03"W	C44	10.97	184.00	3°24'59"	5.49	10.97	S68°03'11"W							
C23	37.84	116.00	18°41'33"	19.09	37.68	S11°22'44"E	C45	52.05	184.00	16°12'31"	26.20	51.88	S58°14'26"W							
C24	36.03	284.00	7°16'08"	18.04	36.01	N17°05'27"W	C46	8.40	34.00	14°09'17"	4.22	8.38	N07°20'28"W							
C25	28.91	284.00	5°49'58"	14.47	28.90	N10°32'23"W	C51	105.09	345.00	17°27'08"	52.95	104.68	N68°35'56"W							

OUT OF 27.20-3-89, 97  
 27.20-3-39.1  
 MAP #'S 27.20-3-51→56  
 58→61  
 71→73  
 -4-1→6



This Plat is based on a current field survey and legal description contained in Inst. #2002-07695

DAVID A. PERFATER, L.S. 1847

EXISTING PRIVATE 15' STORM DRAIN EASEMENT & P.U.E. P.B. 26 PG. 83

THE VILLAGE AT TINKER CREEK  
 SECTION 1, LOTS 51-56, 58-61,  
 71-73, and 101-106  
 SITUATE ON PLANTATION ROAD  
 BEING THE PROPERTY OF  
 CBI DEVELOPERS, LLC  
 HOLLINS MAGISTERIAL DISTRICT  
 THE COUNTY OF ROANOKE, VIRGINIA  
 SCALE: 1" = 40' DATE: May 21, 2004  
 M&C Comm. #1966-S8  
 SHEET 3 OF 3

**Mattern & Craig, Inc.**  
 CONSULTING ENGINEERS - SURVEYORS  
 701 FIRST STREET, S.W.  
 ROANOKE, VIRGINIA 24016  
 (840) 846-9842  
 (840) 846-7801 FAX