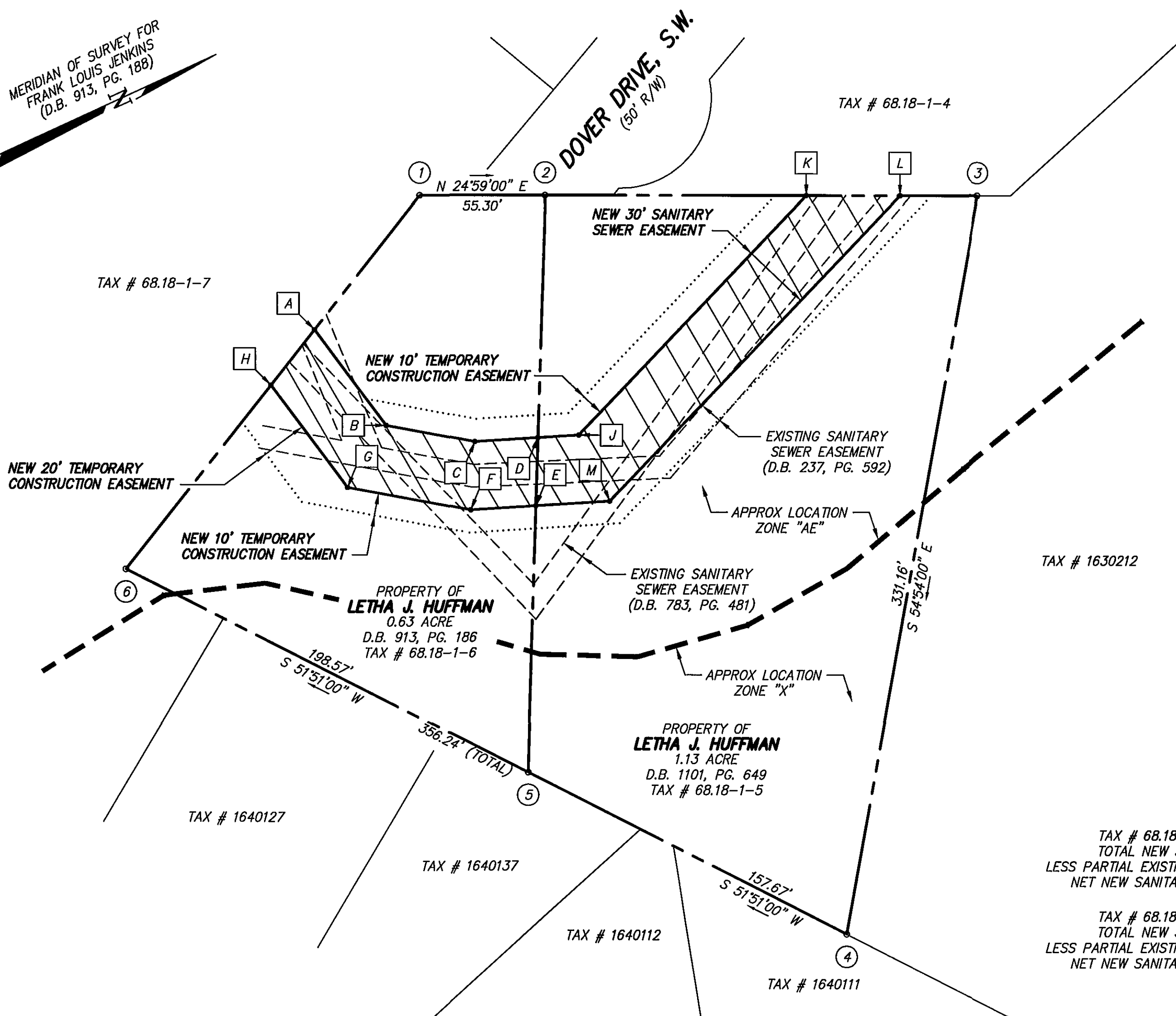
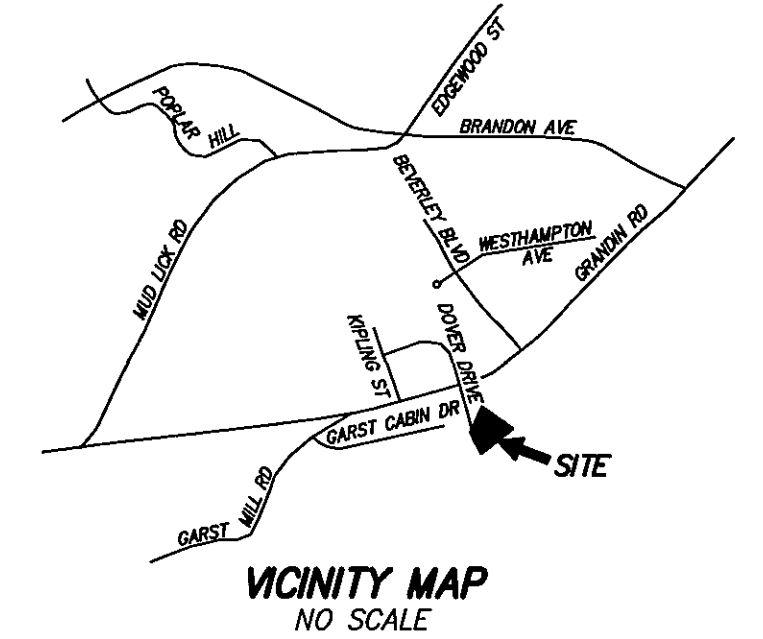


MERIDIAN OF SURVEY FOR  
FRANK LOUIS JENKINS  
(D.B. 913, PG. 188)



LINE TABLE		
LINE	BEARING	DISTANCE
1-3	N 24°59'00" E	246.55'
2-3	N 24°59'00" E	191.25'
2-5	S 63°18'50" E	254.88'
6-1	N 26°55'00" W	209.73'
1-A	S 26°55'00" E	75.33'
2-D	S 63°18'50" E	106.95'
3-L	S 24°59'00" W	34.57'
A-B	N 78°08'35" E	52.74'
B-C	N 35°25'06" E	39.79'
C-D	N 21°18'34" E	27.91'
D-E	S 63°18'50" E	30.13'
E-F	S 21°18'34" W	28.80'
F-G	S 35°25'06" W	55.24'
G-H	S 78°08'35" W	56.40'
H-A	N 26°55'00" W	31.07'
D-J	N 21°18'34" E	18.06'
J-K	N 21°29'14" W	145.86'
K-L	N 24°59'00" E	41.38'
L-M	S 21°29'14" E	186.11'
M-E	S 21°18'34" W	32.64'
E-D	N 63°18'50" W	30.13'



**LEGEND**  
 [Hatched Box] = NEW SANITARY SEWER EASEMENT  
 S.S.E. = SANITARY SEWER EASEMENT  
 APPROX = APPROXIMATE  
 S.F. = SQUARE FEET  
 D.B. = DEED BOOK  
 P.B. = PLAT BOOK  
 PG. = PAGE

TAX # 68.18-1-5  
 TOTAL NEW 30' S.S.E. 5,740 S.F.  
 LESS PARTIAL EXISTING S.S.E. - 2,311 S.F.  
 NET NEW SANITARY S.S.E. 3,429 S.F.

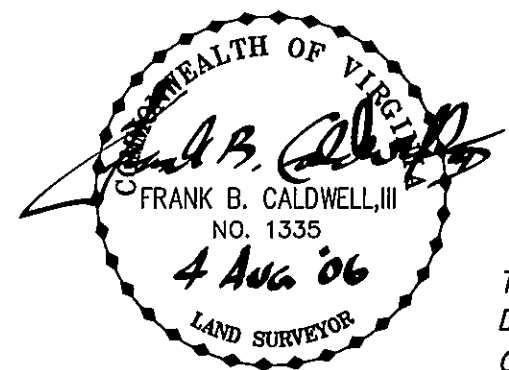
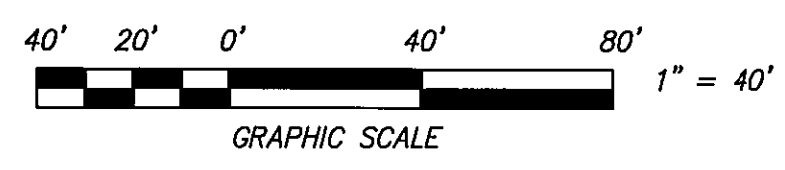
TAX # 68.18-1-6  
 TOTAL NEW 30' S.S.E. 3,913 S.F.  
 LESS PARTIAL EXISTING S.S.E. - 2,038 S.F.  
 NET NEW SANITARY S.S.E. 1,875 S.F.

- NOTES:**
- THIS PLAT WAS PREPARED WITH THE BENEFIT OF A TITLE REPORT BY GLENN, FELDMANN, DARBY & GOODLATTE, FILE NUMBER 0550600, DATED MAY 23 & MAY 24, 2006.
  - THE SUBJECT PROPERTY LIES WITHIN THE LIMITS OF ZONE "X" AND ZONE "AE" AS SHOWN ON THE FEMA FLOOD INSURANCE RATE MAP, 51161C0044 D, EFFECTIVE DATE OCTOBER 15, 1993.
  - REFERENCE: SURVEY FOR FRANK LOUIS JENKINS BY T.P. PARKER DATED NOVEMBER, 25, 1970, RECORDED IN D.B. 913, PG. 188.
  - THIS PLAT DOES NOT CONSTITUTE A BOUNDARY SURVEY BY CALDWELL WHITE ASSOCIATES.

IN THE CLERK'S OFFICE OF THE CIRCUIT COURT OF THE COUNTY OF ROANOKE, VIRGINIA, THIS MAP WAS PRESENTED WITH THE CERTIFICATE OF ACKNOWLEDGEMENT THERETO ATTACHED ADMITTED TO RECORD AT 12:41 O'CLOCK P.M. ON THIS 22 DAY OF AUGUST, 2006.

TESTE: STEVEN A. McGRAW  
 CLERK

BY: Kenneth M. Brooks  
 DEPUTY CLERK



GARST MILL CORRECTIVE ACTION PROJECT  
 MUDLICK CREEK INTERCEPTOR 2006

EASEMENT PLAT  
 FOR  
**WESTERN VIRGINIA WATER AUTHORITY**

SHOWING NEW 30' SANITARY SEWER EASEMENT, 10' TEMPORARY CONSTRUCTION EASEMENTS & 20' TEMPORARY CONSTRUCTION EASEMENT HEREBY DEDICATED TO WESTERN VIRGINIA WATER AUTHORITY BY LETHA J. HUFFMAN (D.B. 1101, PG. 649 & D.B. 913, PG. 186)

SITUATE DOVER DRIVE, S.W.  
 WINDSOR HILLS MAGISTERIAL DISTRICT  
 COUNTY OF ROANOKE, VIRGINIA

**CWA**  
**CALDWELL WHITE ASSOCIATES**  
 ENGINEERS / SURVEYORS / PLANNERS  
 4203 MELROSE AVENUE, NW  
 P.O. BOX 8260  
 ROANOKE, VIRGINIA 24017  
 (540) 366-3400 FAX: (540) 366-8702

SCALE: 1" = 40'  
 N.B.: MUDLICK 1  
 DRAWN: JC  
 W.O.: 05-0102-43