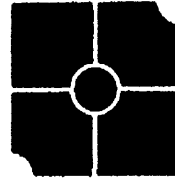


ZERO LOT LINE SUBDIVISION SHOWING
 LOTS 1 THRU 45
RIVERLAND VINEYARDS
 AND
LOT 11A (0.765 AC.)

BLOCK 1, GREEN HILL
 P.B. 9, PG. 62
 CATAWBA MAGISTERIAL DISTRICT
 ROANOKE COUNTY, VIRGINIA

TAX NO. 055.04-01-03.00 & 04.00
 TAX NO. 055.04-01-56.00 & 50.00
 DRAWN: LRD
 CALC.: LRD

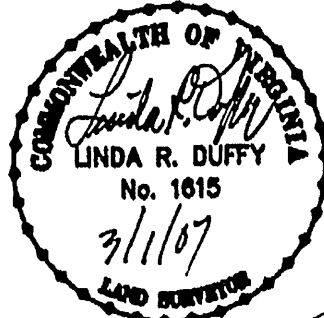
SCALE: 1" = 60'
 DATE: FEB. 28, 2007
 W.O. S03046-06
 N.B.: RV-1
 REV: MARCH 1, 2007



parker
DESIGN GROUP

ENGINEERS • SURVEYORS • PLANNERS • LANDSCAPE ARCHITECTS

816 Boulevard
 Salem, Virginia 24153
 Phone: 540-387-1153
 Fax: 540-389-5747
 www.parkergd.com



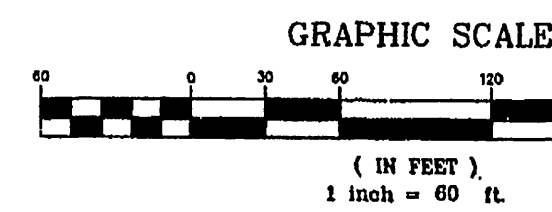
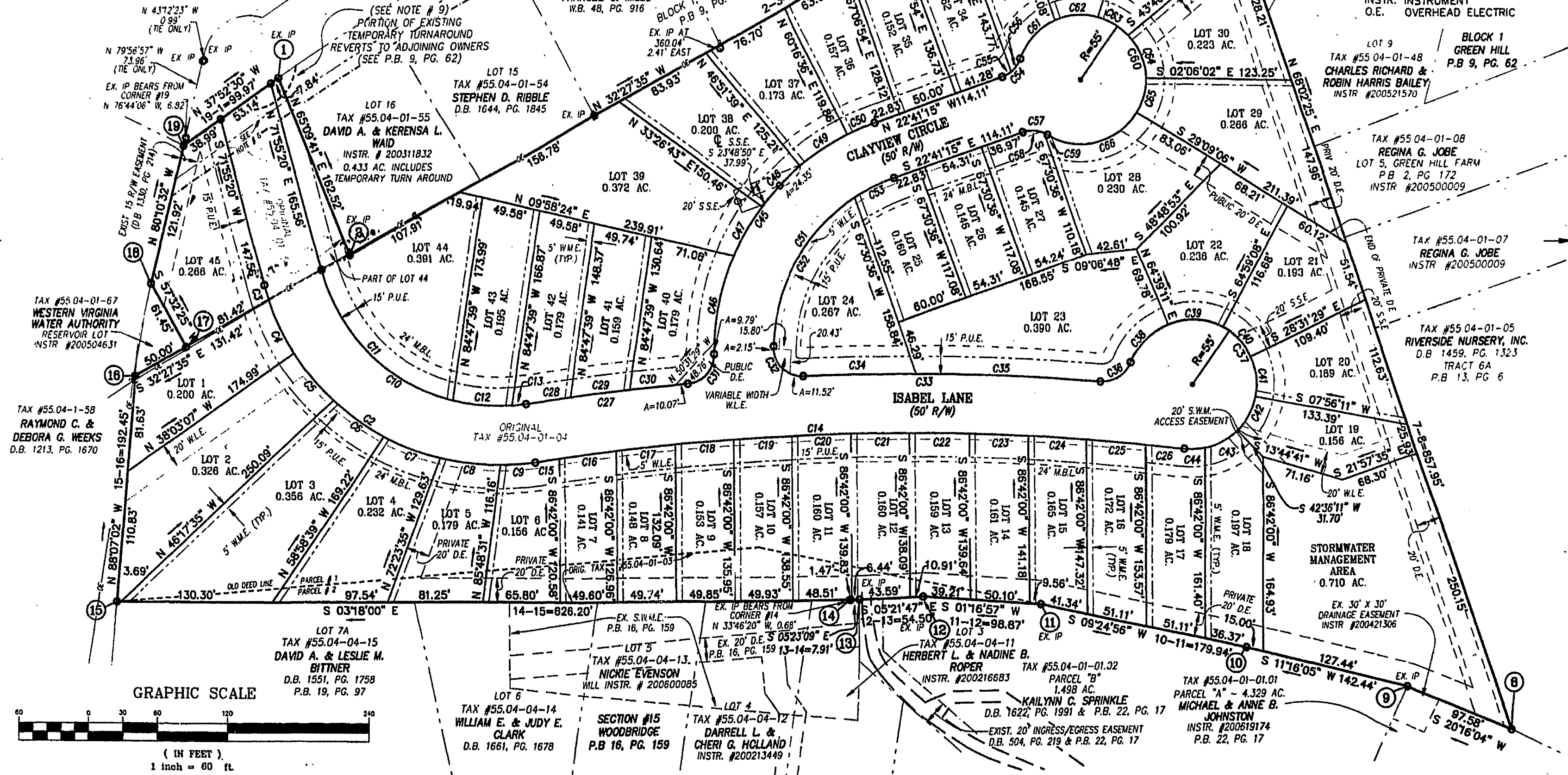
GREEN HILL DRIVE (VA. SEC. ROUTE # 1175)
 (50' R/W)

INSTRUMENT # 2007-03636

MERIDIAN OF
 P.B. 22, PG. 17

LEGEND:

- P.B. PLAT BOOK
- D.B. DEED BOOK
- PG. PAGE
- EX. EXISTING
- IP IRON PIN
- AC. ACRES
- S.F. SQUARE FEET
- A= ARC LENGTH
- R/W RIGHT-OF-WAY
- S.S.E. SANITARY SEWER EASEMENT
- W.L.E. WATERLINE EASEMENT
- W.M.E. WALL MAINTENANCE EASEMENT
- S.W.M. STORMWATER MANAGEMENT
- D.E. DRAINAGE EASEMENT
- U.E. UTILITY EASEMENT
- PRIV. PRIVATE
- E. EASEMENT
- INSTR. INSTRUMENT
- O.E. OVERHEAD ELECTRIC



P.B. 31, PG. 01

CLOSED BY LRD FEB. 9, 2007 LOTS 31 & 32 CLOSED MAR. 1, 2007