

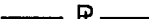



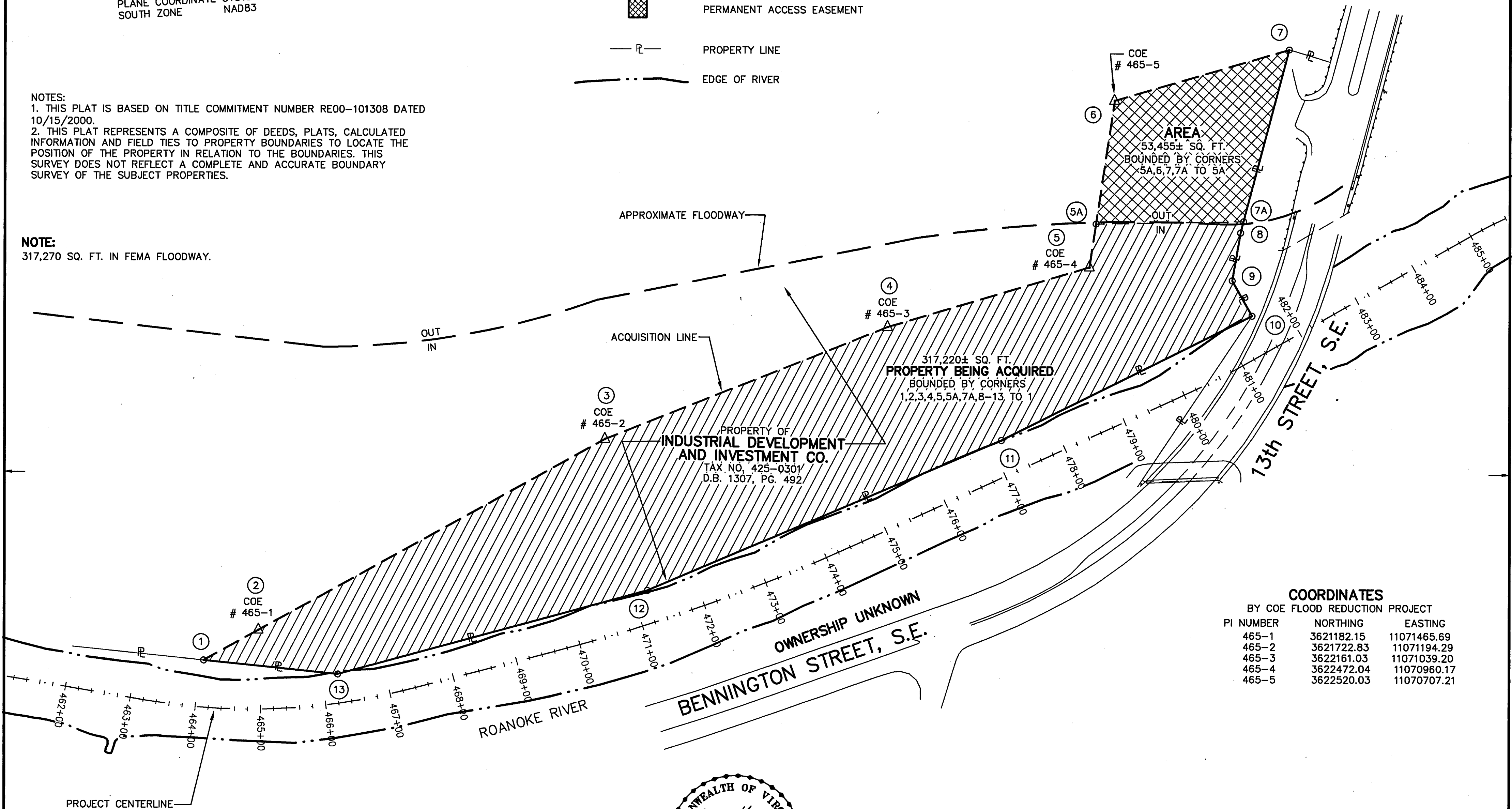
MERIDIAN OF VIRGINIA STATE  
PLANE COORDINATE SYSTEM  
SOUTH ZONE NAD83

LEGEND:

-  PROPERTY BEING ACQUIRED
-  PERMANENT ACCESS EASEMENT
-  PROPERTY LINE
-  EDGE OF RIVER

NOTES:  
1. THIS PLAT IS BASED ON TITLE COMMITMENT NUMBER RE00-101308 DATED 10/15/2000.  
2. THIS PLAT REPRESENTS A COMPOSITE OF DEEDS, PLATS, CALCULATED INFORMATION AND FIELD TIES TO PROPERTY BOUNDARIES TO LOCATE THE POSITION OF THE PROPERTY IN RELATION TO THE BOUNDARIES. THIS SURVEY DOES NOT REFLECT A COMPLETE AND ACCURATE BOUNDARY SURVEY OF THE SUBJECT PROPERTIES.

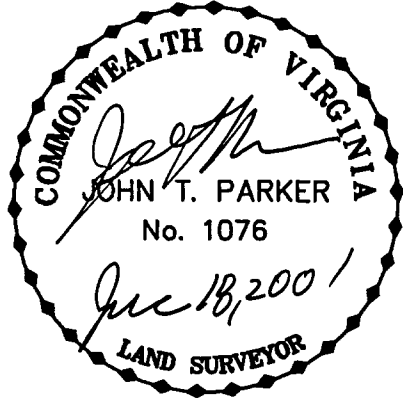
NOTE:  
317,270 SQ. FT. IN FEMA FLOODWAY.



COORDINATES

BY COE FLOOD REDUCTION PROJECT		
PI NUMBER	NORTHING	EASTING
465-1	3621182.15	11071465.69
465-2	3621722.83	11071194.29
465-3	3622161.03	11071039.20
465-4	3622472.04	11070960.17
465-5	3622520.03	11070707.21

REVISED: 06/08/01



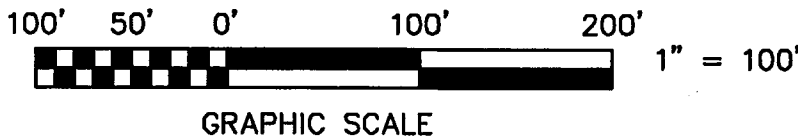
**TPP&S** T. P. PARKER & SON  
ENGINEERS 618 Boulevard  
SURVEYORS Post Office Box 39  
PLANNERS Salem, Virginia 24163

W.O.: 98-1195  
TAX # 425-0301  
N.B. N/A DRAWN JTP, JR.  
CALC. CHK'D JTP  
CLOSED: JTP, JR.

ROANOKE OFFICE OF CITY ENGINEER VIRGINIA  
ROANOKE RIVER FLOOD REDUCTION PROJECT  
SHOWING A NEW EASEMENT AND PROPERTY BEING  
ACQUIRED BY  
**THE CITY OF ROANOKE**  
FROM  
**INDUSTRIAL DEVELOPMENT AND INVESTMENT CO.**  
THE CITY OF ROANOKE, VIRGINIA

SCALE: 1" = 100'  
DATE: 24 AUGUST 2000  
PLAN NO. 6444-003

APPROVED:   
CITY ENGINEER



IN THE CLERK'S OFFICE OF THE CIRCUIT COURT OF THE CITY OF ROANOKE, VIRGINIA  
THIS MAP WAS PRESENTED WITH THE CERTIFICATE OF ACKNOWLEDGMENT THERE TO ATTACHED  
ADMITTED TO RECORD AT 2:30 O'CLOCK P.M. ON THIS 19 DAY OF July, 2001.

TESTE: ARTHUR B. CRUSH, III  
CLERK

BY:   
DEPUTY CLERK