

MERIDIAN OF VIRGINIA STATE
PLANE COORDINATE SYSTEM
SOUTH ZONE

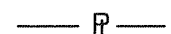
COORDINATES

BY COE FLOOD REDUCTION PROJECT		
PI NUMBER	NORTHING	EASTING
7	3618172.46	11070273.58
8	3618161.12	11070243.63
427-3	3618135.07	11070210.34

LEGEND:



PROPERTY BEING ACQUIRED



PROPERTY LINE

S.S.E.

SANITARY SEWER EASEMENT

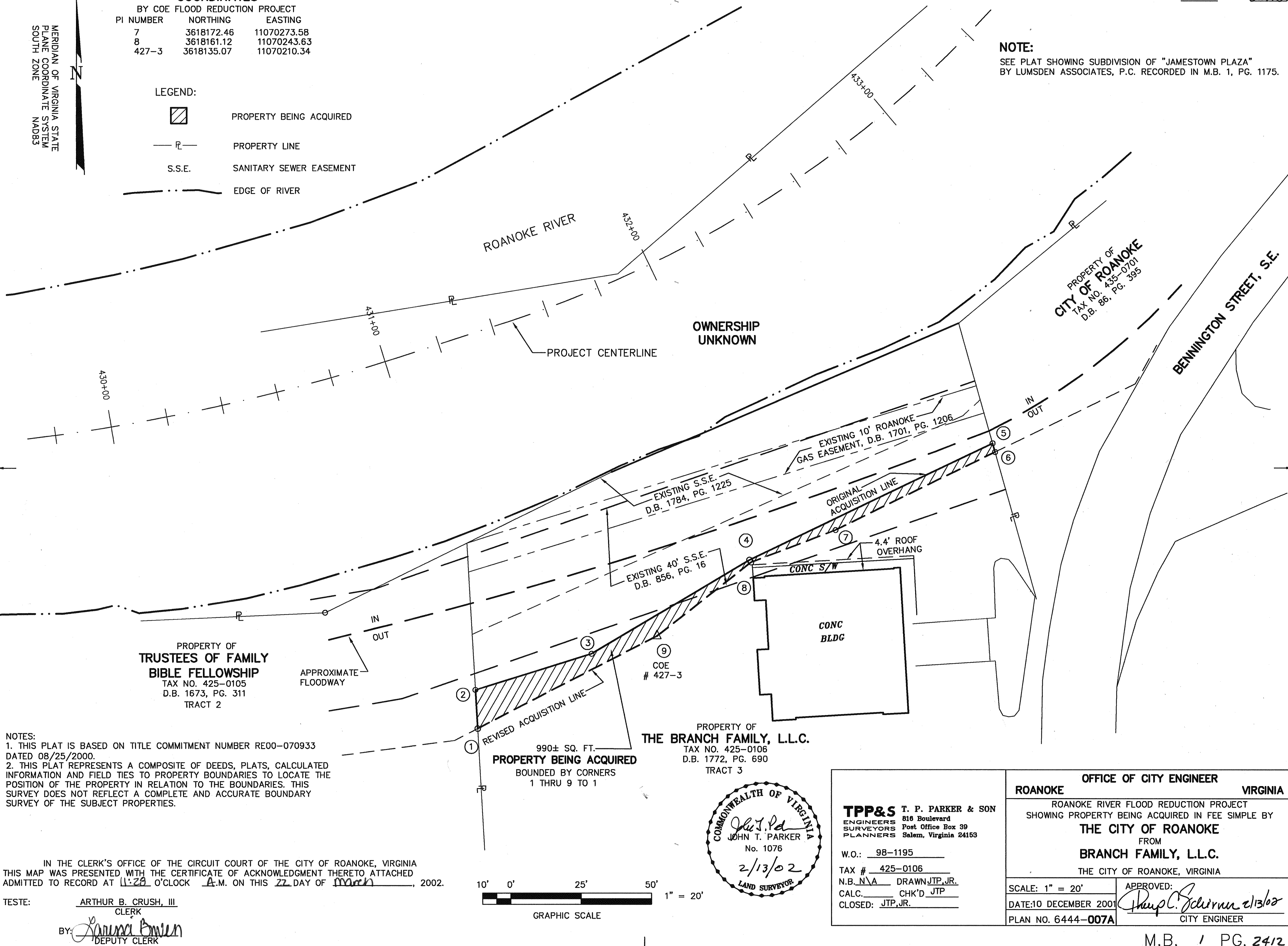
EDGE OF RIVER

THIS IS AN ORIGINAL SIZE PLAT AND HAS NOT BEEN REDUCED.

M.B. 1 PG. 2412

NOTE:

SEE PLAT SHOWING SUBDIVISION OF "JAMESTOWN PLAZA"
BY LUMSDEN ASSOCIATES, P.C. RECORDED IN M.B. 1, PG. 1175.



NOTES:
1. THIS PLAT IS BASED ON TITLE COMMITMENT NUMBER RE00-070933
DATED 08/25/2000.
2. THIS PLAT REPRESENTS A COMPOSITE OF DEEDS, PLATS, CALCULATED
INFORMATION AND FIELD TIES TO PROPERTY BOUNDARIES TO LOCATE THE
POSITION OF THE PROPERTY IN RELATION TO THE BOUNDARIES. THIS
SURVEY DOES NOT REFLECT A COMPLETE AND ACCURATE BOUNDARY
SURVEY OF THE SUBJECT PROPERTIES.

IN THE CLERK'S OFFICE OF THE CIRCUIT COURT OF THE CITY OF ROANOKE, VIRGINIA
THIS MAP WAS PRESENTED WITH THE CERTIFICATE OF ACKNOWLEDGMENT THERETO ATTACHED
ADMITTED TO RECORD AT 11:29 O'CLOCK A.M. ON THIS 22 DAY OF March, 2002.

TESTE: ARTHUR B. CRUSH, III
CLERK

BY: [Signature]
DEPUTY CLERK