

BK1pg3119



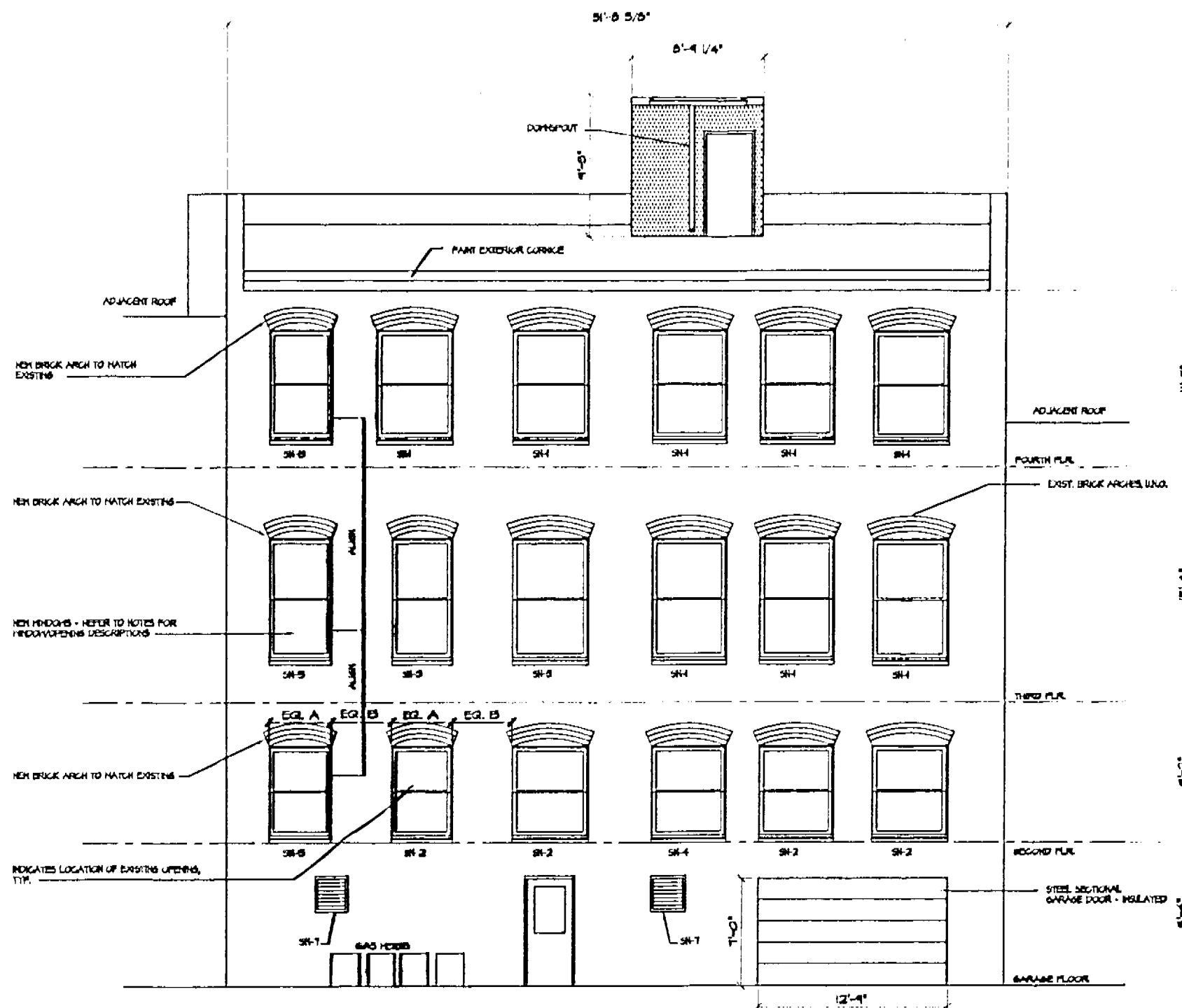
**HILL  
STUDIO**

Community Planning  
Landscape Architecture  
Architecture  
Historic Preservation

128 W. Campbell Ave. #W  
Roanoke, VA 24011

tel: 540-343-0243  
fax: 540-343-3623

www.hillstudio.com



**REAR ELEVATION**

In the Clerk's Office of the Circuit Court of the City of  
Roanoke, Virginia, this instrument is admitted to Record on  
Feb 27, 2007, at 3:47 o'clock P.m.

Teste: BRENDA S. HAMILTON, CLERK

By Brenda S. Hamilton  
Deputy Clerk

**ARCHITECT'S CERTIFICATE**

I, TODD E. SETLIFF, A DULY LICENSED ARCHITECT IN THE COMMONWEALTH OF VIRGINIA, DO HEREBY CERTIFY THAT THESE PLANS ARE ACCURATE (WITHIN NOMINAL CONSTRUCTION TOLERANCES - BASE SHEETS PROVIDED BY SPECTRUM ENGINEERING) TO THE BEST OF MY KNOWLEDGE AND COMPLY WITH SECTION 55-79-58 OF THE CONDOMINIUM ACT AS AMENDED, AND THAT THE KNITS SHOWN HEREIN ARE NOT SUBSTANTIALLY COMPLETE.

DATE 8/2/06

Todd E. Setliff  
TODD E. SETLIFF

RENOVATIONS  
111 W. CAMPBELL AVE.  
REAR ELEVATION  
ROANOKE, VIRGINIA



Drawn: 07-19-06  
Scale: as noted  
Reviewed:

Printed by: TES/psg  
Printed by: TES  
Project No.: 0550-01

