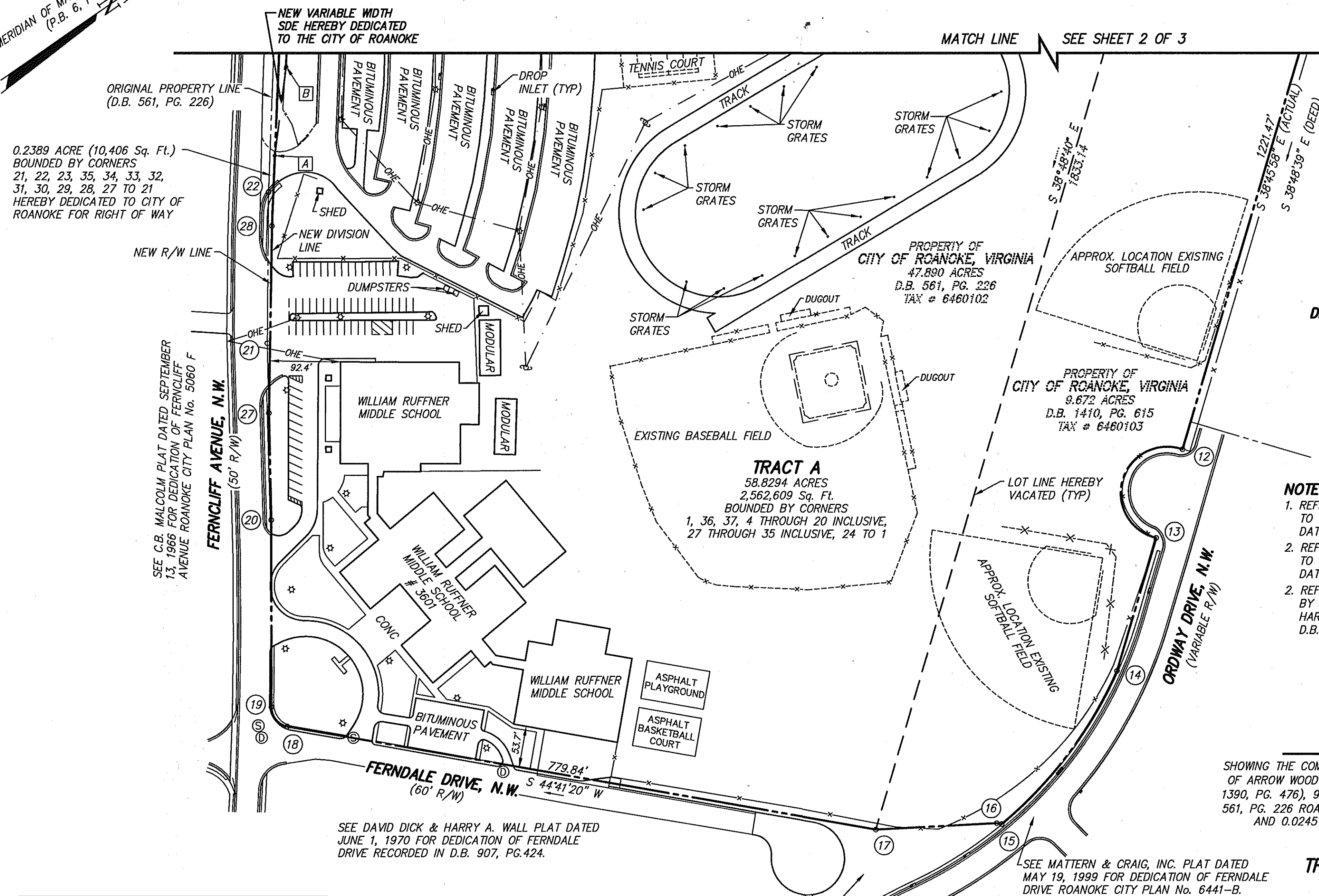


MERIDIAN OF MAP OF ARROW WOOD
(P.B. 6, PG. 93)

MATCH LINE SEE SHEET 2 OF 3



NOTES:

- REFERENCE: STREET RIGHT-OF-WAY BEING GRANTED TO THE CITY OF ROANOKE BY MATTERN & CRAIG, INC. DATED MAY 19, 1999 ROANOKE CITY PLAN No. 6441-B.
- REFERENCE: STREET RIGHT-OF-WAY BEING GRANTED TO THE CITY OF ROANOKE BY MATTERN & CRAIG, INC. DATED MAY 19, 1999 ROANOKE CITY PLAN No. 6441-A.
- REFERENCE: PLAT SHOWING 60' ROAD TO BE DEDICATED BY ROANOKE CITY SCHOOL BOARD BY DAVID DICK & HARRY A. WALL DATED JUNE 1, 1970 RECORDED IN D.B. 907, PG. 424.

RESUBDIVISION PLAT FOR

CITY OF ROANOKE

SHOWING THE COMBINATION OF LOTS 7 & 8 (D.B. 1465, PG. 1722) MAP OF ARROW WOOD (P.B. 6, PG. 93 ROANOKE COUNTY), 0.01 ACRE (D.B. 1390, PG. 476), 9.672 ACRES (D.B. 1410, PG. 615), 47.890 ACRES (D.B. 561, PG. 226 ROANOKE COUNTY) AND THE DEDICATION OF 0.2389 ACRE AND 0.0245 ACRE TO CITY OF ROANOKE FOR RIGHT OF WAY CREATING HEREON

TRACT A (58.8294 ACRES)

SITUATE FERNCLIFF AVENUE, N.W.
CITY OF ROANOKE, VIRGINIA



CALDWELL WHITE ASSOCIATES

ENGINEERS / SURVEYORS / PLANNERS

4203 MELROSE AVENUE
P.O. BOX 6260
ROANOKE, VIRGINIA 24017-0260
(540) 366-3400
FAX: (540) 366-8702

Tax Nos.: 6460102, 3, 6472207, 8, 9
Calculated: JW
Drawn: JW
Checked: FBC, III

SHEET 3 OF 3

Rev: August 29, 2007
(Per City Comments)
Date: June 13, 2007
N.B.: Rke City 4
Scale: 1" = 100'
W.O. No.: 07-0018

STORM DRAIN EASEMENT LINE TABLE

LINE	BEARING	DISTANCE
28-A	N 52°47'59" W	91.66'
A-B	N 47°53'02" W	116.70'
B-C	N 52°47'59" W	49.26'
C-D	N 52°56'30" W	200.00'
D-E	N 52°59'28" W	493.03'
E-F	N 49°54'27" W	276.17'
F-G	S 50°18'34" W	19.69'
G-34	N 48°37'27" W	2.79'

