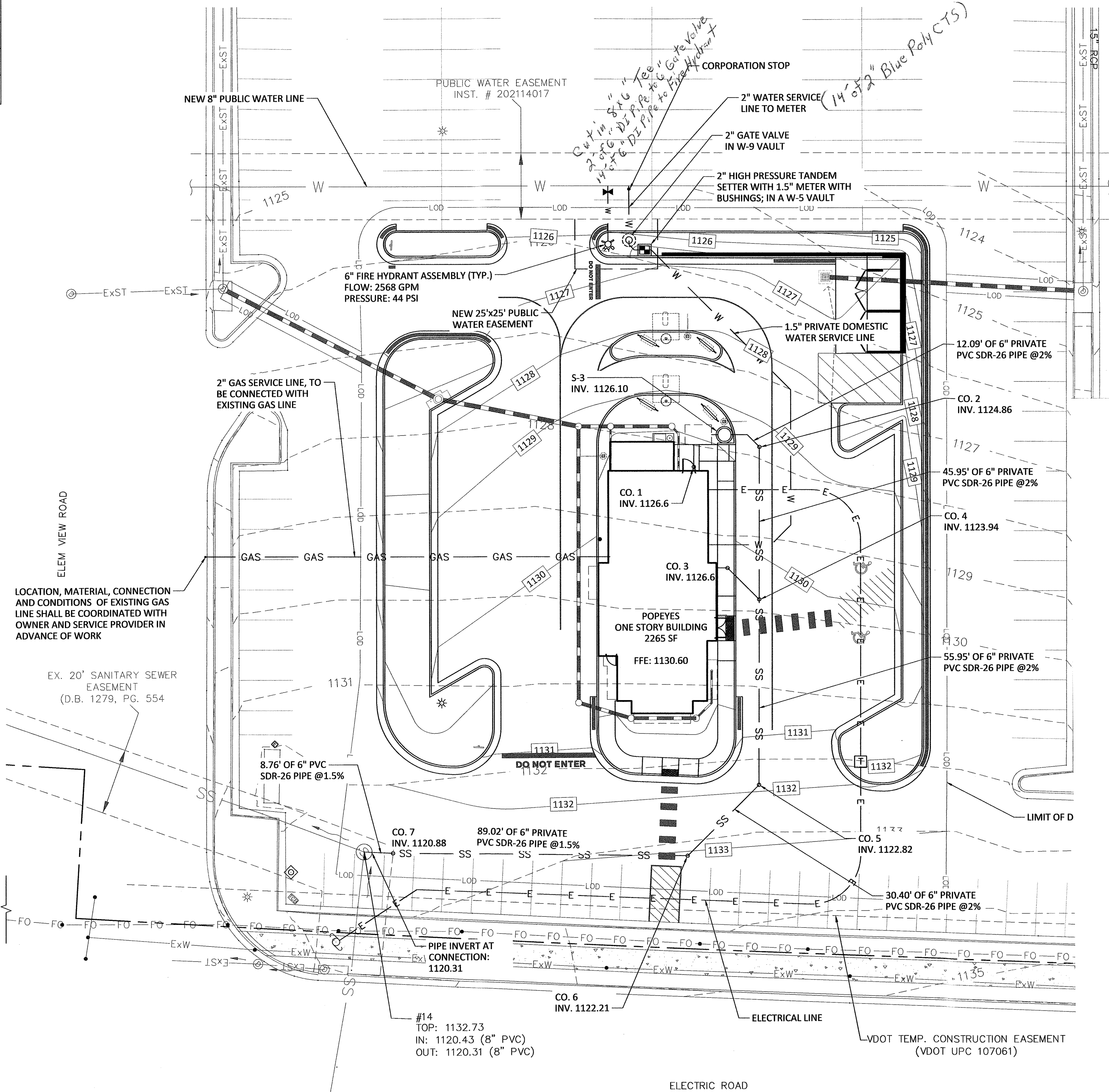


FIRE FLOW TABLE	
EXISTING HYDRANT	
HYDRANT NO.	HYD-21278
STATIC PRESSURE	107 PSI
FLOW	1482 GPM
RESID. PRESSURE	92 PSI
NEW HYDRANT (MODELED)	
MAX. HOURLY DEMAND	110 GPM
MAX. HOURLY RESID. PRESSURE	104 PSI
MAX. DAILY DEMAND	68GPM
NFF	2500 GPM
MAX. DAILY + NFF RESID. PRESSURE	44 PSI



X: 11052309.2667
Y: 3609806.0633
Z: 1130.00

X: 11052335.2541
Y: 3609827.3585
Z: 1130.09

BENCHMARK TABLE				
POINT #	EASTING	NORTHING	ELEVATION	DESCRIPTION
11052335.2541	3609827.3585	1130.0900		BM

GENERAL UTILITY NOTES:

- SANITARY SEWER LATERALS SHALL BE 6" SDR 26 PLACED WITH A MINIMUM SLOPE OF 2% AND A MINIMUM COVER OF 36"
- ALL NON-FERROUS SANITARY SEWER PIPES SHALL BE MARKED WITH TRACER WIRE SHALL BE #12 AWG COPPER CLAD STEEL, HIGH STRENGTH WITH MINIMUM 450 LB. BREAK LOAD, WITH MINIMUM 30 MIL HDPE INSULATION THICKNESS INTENDED FOR DIRECT BURY, COLOR COATED PER APWA STANDARD FOR THE SPECIFIC UTILITY BEING MARKED.
- SANITARY CLEANOUT LIDS PLACED WITHIN PARKING LOT OR DRIVE AISLES SHALL BE TRAFFIC RATED (H-20 MIN).
- PIPE CONNECTIONS TO MANHOLE SHALL BE MADE WITH RUBBER BOOT.
- CONTRACTOR SHALL PROVIDE AND INSTALL A 6" CUT IN TEE ON THE 8" WATER MAIN IN AN OSHA SAFE TRENCH, INCLUDING ALL TRAFFIC CONTROL. WATER AUTHORITY WILL PRESSURE TEST THE CONNECTION UPON EXECUTION OF A WORK AUTHORIZATION AGREEMENT.
- WATER MAIN AND LATERAL TO BE PLACED WITH A MINIMUM COVER OF 36".
- WATER SERVICE LINE SHALL BE "K" TYPE COPPER OR PE 4710 CTS O.D. MINIMUM CELL CLASS 445474E AND 445474D.
- ALL METER EQUIPMENT TO BE PROVIDED SHALL BE FROM AUTHORITY'S APPROVED PRODUCT LIST. COUNTY WILL PROVIDE PHYSICAL METER.
- LEAK TESTING OF WATER LINE SHALL BE PROVIDED AND CONFORM TO AUTHORITY'S REQUIREMENTS.
- WATER LINE SHALL BE FLUSHED AND DISINFECTED PRIOR TO BEING MADE OPERATIONAL, IN CONFORMANCE WITH REQUIREMENTS SET FORTH IN PUBLIC UTILITIES REQUIREMENTS.
- CONTRACTOR IS RESPONSIBLE FOR PRIMARY ELECTRIC DITCH, CONCRETE PAD TO SPECIFICATIONS FOR TRANSFORMER, AND ALL SECONDARY WORK. TRANSFORMER LOCATION AND SERVICE LINE INSTALLATION SHALL BE COORDINATED WITH ELECTRIC SERVICE PROVIDER.
- STORMWATER PIPE PROFILES ARE PROVIDED ON SHEET C6.04.
- STORM PIPE AND STRUCTURE TABLES ARE PROVIDED IN SHEET C9.05.
- ROOF LEADER TIE-IN, LOCATION, MATERIAL AND PIPE SIZES TO BE COORDINATED WITH ARCHITECTURAL PLANS.
- ELECTRIC AND GAS LINES ARE SHOWN FOR GENERAL ROUTING PURPOSES ONLY. OWNER/DEVELOPER IS RESPONSIBLE FOR COORDINATION OF SERVICE REQUIREMENTS, INCLUDING CONDUIT SIZING AND EXTENSIONS TO SITE. CONTRACTOR SHALL CONFIRM ROUTING WITH OWNER/DEVELOPER PRIOR TO TRENCHING OPERATIONS.
- TEE SHALL BE CUT IN TO EXISTING 8" WATER MAIN FOLLOWING UP- AND DOWNSTREAM VALVE CLOSURES FOR LINE ISOLATION. CONTRACTOR SHALL PROVIDE COUNTY WITH MINIMUM 48 HOURS NOTICE FOR LINE CLOSURE. COUNTY WILL RESPONSIBLE FOR NOTIFYING ADJACENT PROPERTIES/AFFECTED PARTIES. CONTRACTOR SHALL EXPEDITE WORK TO MINIMIZE LINE CLOSURE DURATION.

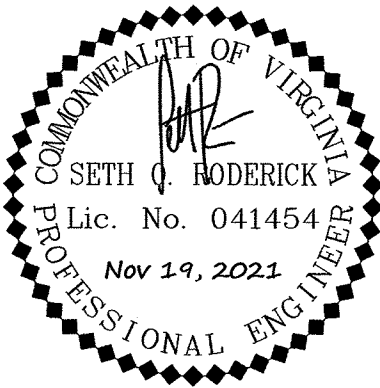
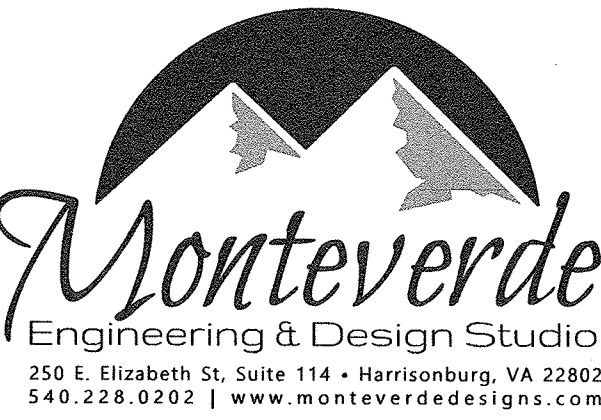
BANDY
- Joe Bandy & Son, Inc. -

I hereby certify that to the best of my knowledge and belief, that the locations of the water and sewer facilities shown on these record drawings have been constructed in accordance with the approved plans and specifications.

Name Kevin Broughman

Signed Kevin Broughman

Date 12-18-22



SITE PLAN

TANGLEWOOD - POPEYES

TBD Electric Road
Roanoke, VA 24018

Revisions:		
No.	Description	Date
1	County & WVWA Comments	10-25-21
2	County & WVWA Comments- 2	11-19-21

APPROVED
FOR CONSTRUCTION

UTILITY PLAN

Project number:	21036C
Date:	August 30, 2021
Drawn by:	AK
Checked by:	SOR

C5.01

SCALE: 1" = 20'-0"
0 20 40 Feet

APPROVED, 12/13/2021