

TANGLEWOOD WEST  
ENTRANCE ROAD

WATER VALVE  
TOP ELEV: 1125.60  
TOP OF NUT ELEV: 1125.20

FIRE HYDRANT  
BASE ELEV: 1125.67

CORPORATION STOP PER SITE PLAN  
(NOT AS-BUILT / LOCATED AS PART OF THIS EXHIBIT)

WATER VALVE (W-5)  
TOP ELEV: 1126.92  
TOP OF NUT ELEV: 1124.26

TANDEM SETTER (W-5)  
TOP ELEV: 1127.28  
SETTER ELEV: 1127.00  
TOP OF LOCKABLE SHUTOFF ELEV: 1126.01

N/F  
TANGLEWOOD VENTURE, LLC  
T.M.#077.16-01-02.00-0000  
INST.#201609116

EX. SS MH  
TOP ELEV: 1132.70  
NEW INV. IN: 1121.3

PRIVATE PORTION OF SANITARY  
LINE BEYOND EXISTING  
MANHOLE SHOWN PER PLANS

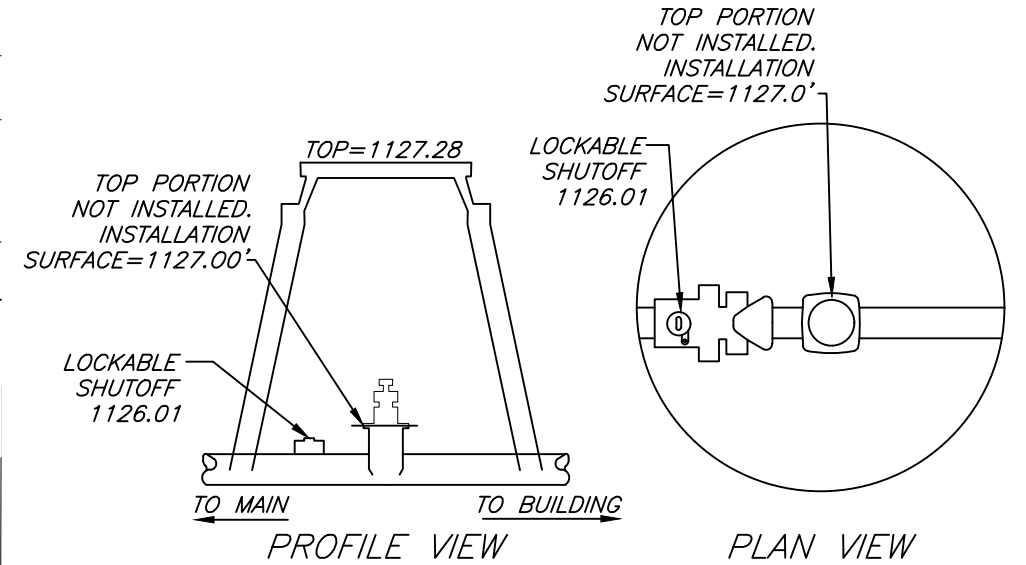
PRIVATE PORTION OF WATERLINE  
BEYOND VAULT SHOWN PER PLANS

0' 30' 60' 90'

SCALE: 1" = 30'

ELECTRIC ROAD

THE INTENT OF THIS EXHIBIT IS TO SHOW THE LOCATION OF  
AS-BUILT WATER AND SANITARY SEWER IMPROVEMENTS AND IS  
NOT INTENDED TO REPRESENT A PHYSICAL IMPROVEMENT SURVEY.



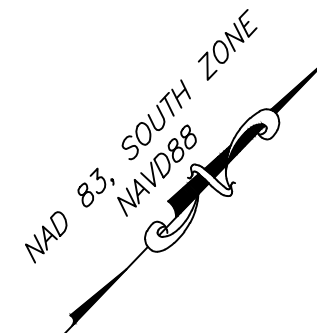
VAULT DETAIL  
N.T.S.

AS-BUILT DRAWING NOTE:  
AS-BUILT DRAWING FOR WATERLINE AND SANITARY SEWER  
IMPROVEMENTS ARE FOR AS-BUILT PURPOSES ONLY. NO  
IMPROVEMENTS OTHER THAN WATER LINE AND SANITARY SEWER  
STRUCTURES WERE AS-BUILT OR INDICATED AS SUCH ON THE  
SUBJECT PLAN SET. UNDERGROUND PIPING WAS NOT LOCATED.  
LOCATION SHOWN IS APPROXIMATE BASED ON SURFACE  
FEATURES AND INFORMATION PROVIDED BY CONTRACTOR.

AS-BUILT SANITARY SEWER & WATERLINE EXHIBIT  
FOR

**WAGNER DEVELOPMENT COMPANY**

SITUATE ELECTRIC ROAD  
TANGLEWOOD POPEYE'S RESTAURANT  
T.M.#077.16-01-02.00-0000  
ROANOKE COUNTY, VIRGINIA  
SURVEYED FEBRUARY 22, 2023  
JOB #05220203.HS  
SCALE: 1" = 30'



DRAWN BY: EJP  
CHECKED BY: DSH

PLANNERS / ARCHITECTS / ENGINEERS / SURVEYORS  
ROANOKE / RICHMOND / NEW RIVER VALLEY / SHENANDOAH VALLEY  
1208 Corporate Circle / Roanoke, Virginia 24018 / Phone (540) 772-9580 / www.balzer.cc