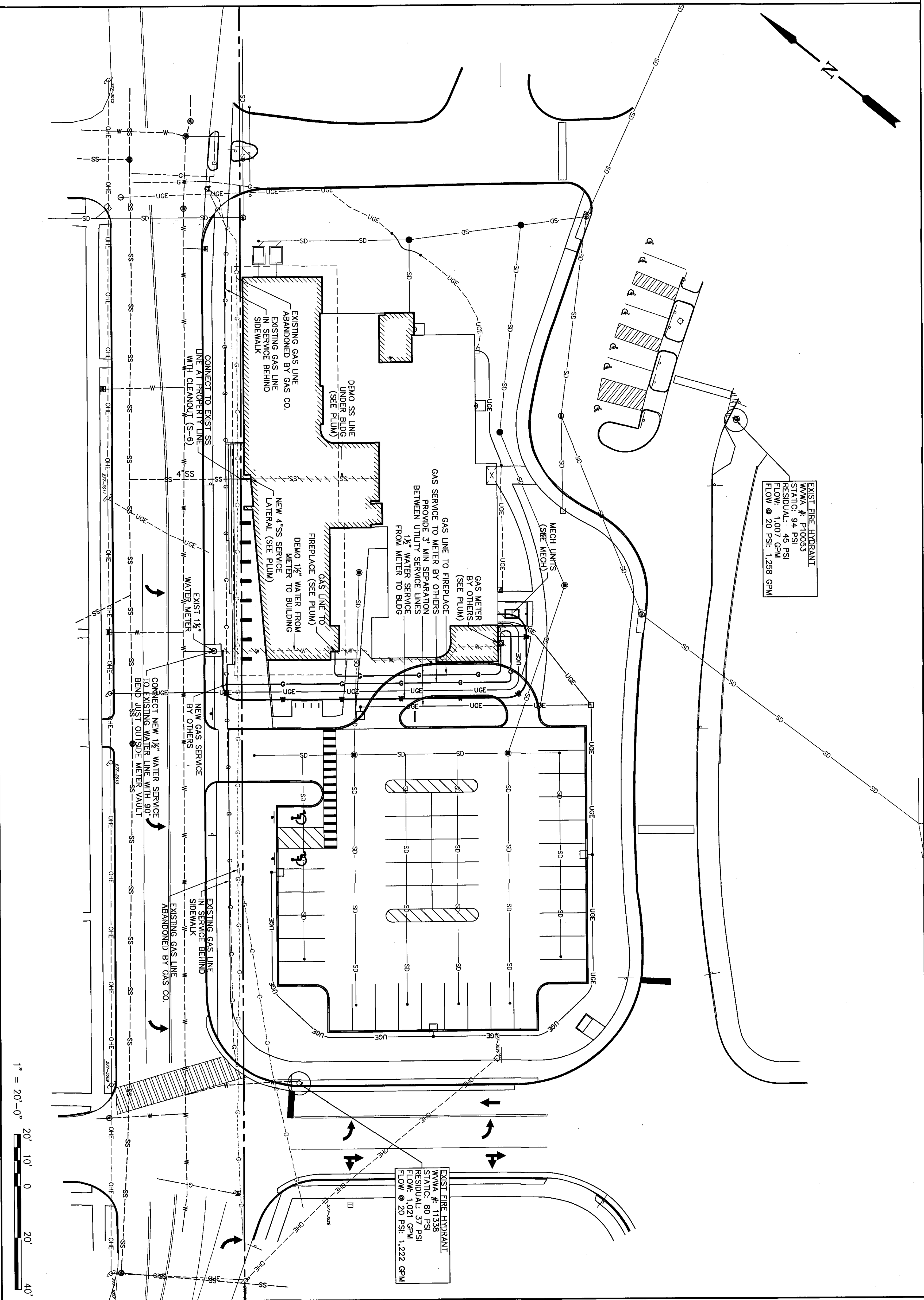


1. ALL WATER LINE AND SANITARY SEWER CONSTRUCTION SHALL BE IN ACCORDANCE WITH PROJECT SPECIFICATIONS AND WESTERN VIRGINIA WATER AUTHORITY STANDARDS AND SPECIFICATIONS, LATEST EDITION.
2. CONTRACTOR SHALL CONTACT "Miss Utility" (800-852-7001) FOR MARKING OF UTILITIES 72 HOURS PRIOR TO ANY EXCAVATION OR CONSTRUCTION.
3. UTILITIES SHOWN ON THESE PLANS REPRESENT UTILITY LOCATIONS AS DETERMINED FROM A FIELD SURVEY OF ABOVE GROUND UTILITY FEATURES AND RECORD DRAWINGS. CONTRACTOR SHALL BE RESPONSIBLE FOR THE LOCATION OF ALL UTILITIES PRIOR TO ANY EXCAVATION. CONTRACTOR SHALL BE RESPONSIBLE FOR THE LOCATION OF ALL UTILITIES PRIOR TO CONSTRUCTION. IF EXISTING CONDITIONS ARE DIFFERENT THAN THAT WHICH IS SHOWN ON THE DRAWINGS, NOTIFY THE ARCHITECT/ENGINEER IMMEDIATELY.
4. THERE MAY EXIST UTILITIES WHICH HAVE NOT BEEN SHOWN ON THE PLANS AND OF WHICH THERE IS NO RECORD. IF ACTIVE UTILITIES ARE ENCOUNTERED WHICH WERE NOT INDICATED ON THE DRAWINGS, CONTRACTOR SHALL STOP WORK IMMEDIATELY AND NOTIFY THE ARCHITECT/ENGINEER IMMEDIATELY. CONTRACTOR SHALL TAKE NECESSARY STEPS TO RESTORE UTILITY SERVICE TO ANY DAMAGED UTILITIES AS SOON AS POSSIBLE.
5. THE CONTRACTOR SHALL FIELD VERIFY THE LOCATIONS OF ALL UNDERGROUND UTILITIES BEFORE COMMENCING WITH CONSTRUCTION.
6. ALL UTILITIES WILL BE VISUALLY INSPECTED BY WESTERN VIRGINIA WATER AUTHORITY INSPECTORS PRIOR TO BACKFILLING TRENCHES.
7. CONTRACTOR SHALL CORRESPOND TO EXISTING WATER LINES WITH THE WESTERN VIRGINIA WATER AUTHORITY.
8. THERE SHALL BE A PRE CONSTRUCTION MEETING WITH THE CONTRACTOR, ARCHITECT/ENGINEER, WESTERN VIRGINIA WATER AUTHORITY AND THE OWNER PRIOR TO BEGINNING CONSTRUCTION.
9. ALL NEW UTILITIES SHALL BE LOCATED UNDERGROUND.
10. PRESSURE TEST AND DISINFECTION OF WATER LINES SHOULD BE IN ACCORDANCE WITH PROJECT SPECIFICATIONS.
11. ACCEPTANCE TESTS OF SANITARY SEWER LINES SHOULD BE IN ACCORDANCE WITH PROJECT SPECIFICATIONS.



SANITARY SEWER LATERAL

BEDDING AND BACKFILL
OUTSIDE OF PAVED AREAS

BEDDING AND BROWN-LEE PAVEMENT AND IN-RIGHT-C

1" = 20'-0" 