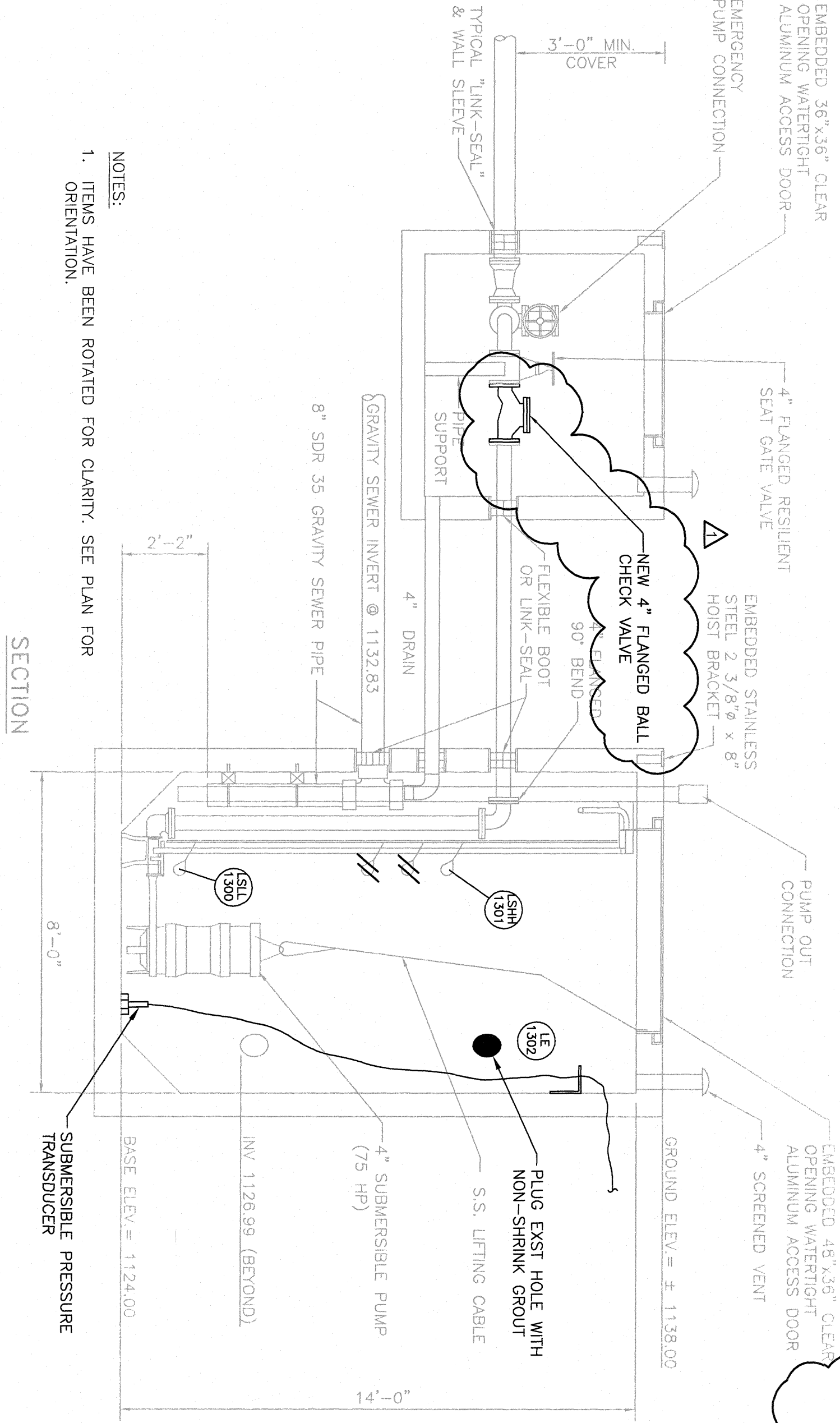
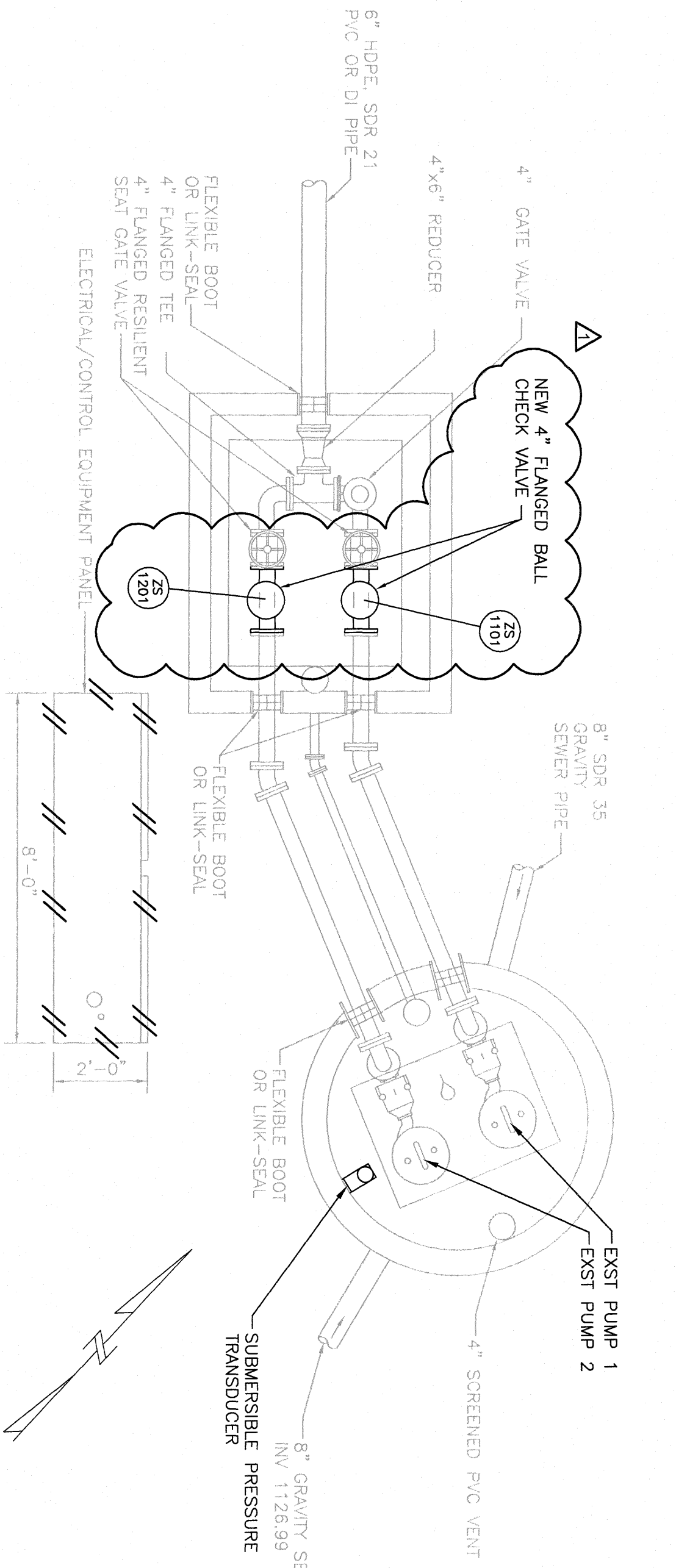


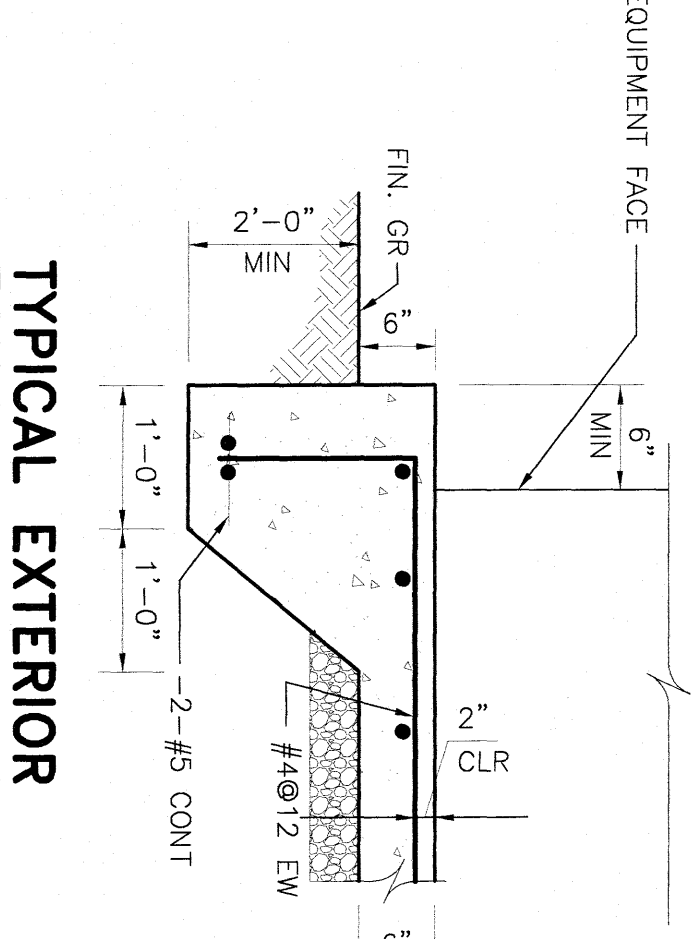
ARCH D - 25-Jan-16



- NOTES:
1. ITEMS HAVE BEEN ROIAED FOR CLARTY. SEE PLAN FOR ORIENTATION.

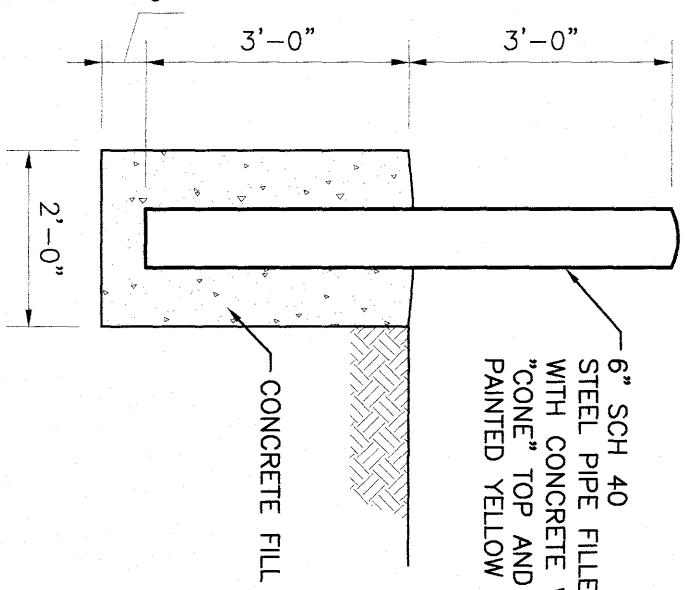
### EXISTING PUMP STATION

NO SCALE



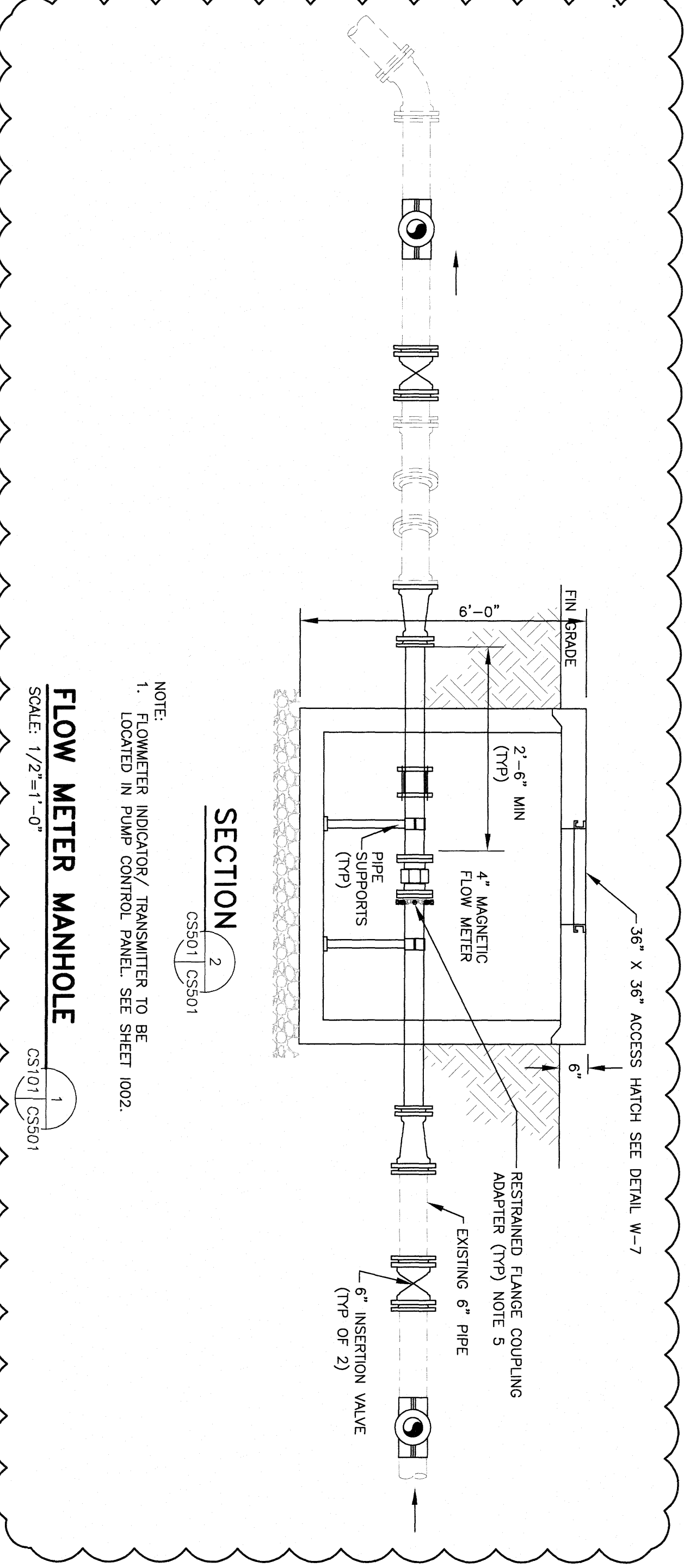
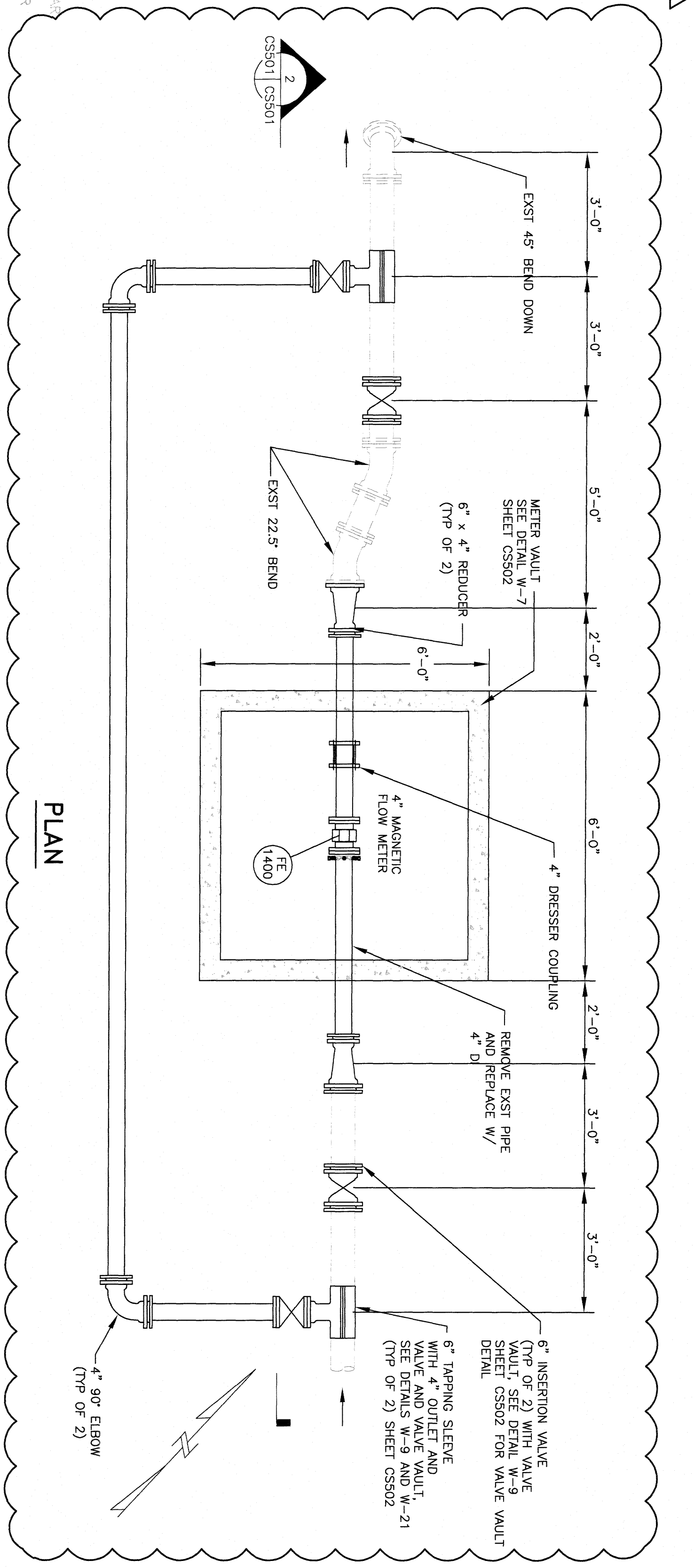
### TYPICAL EXTERIOR EQUIPMENT PAD DETAIL

NO SCALE



### BOLLARD

NO SCALE



- NOTE:
1. FLOWMETER INDICATOR/ TRANSMITTER TO BE LOCATED IN PUMP CONTROL PANEL. SEE SHEET 1002.

### FLOW METER MANHOLE

SCALE: 1/2"=1'-0"

### RECORD DOCUMENTS

THESE RECORD DOCUMENTS HAVE BEEN PREPARED BASED ON INFORMATION PROVIDED BY OTHERS AND ARE INTENDED TO SHOW THE REPORTED LOCATION OF THE WORK AND SIGNIFICANT CHANGES MADE TO THE WORK. THE INFORMATION IS NOT A GUARANTEE OF THE ACCURACY OF THIS INFORMATION HAS NOT BEEN FIELD VERIFIED BY AECOM AND THEREFORE AECOM DISCLAIMS RESPONSIBILITY FOR ANY ERRORS OR OMISSIONS. THE INFORMATION IS PROVIDED FOR YOUR INFORMATION AND FOR YOUR RECORD. AECOM CANNOT AND DOES NOT WARRANT THE ACCURACY OF THESE RECORD DOCUMENTS. EITHER EXPRESS OR IMPLIED AS TO THE ACCURACY OF THESE RECORD DOCUMENTS STAMP ON SHEET 0001 FOR ADDITIONAL CONDITIONS OF USE.

# AECOM

DATE: JANUARY 2016 BY: IPC

- NOTES:
1. INFORMATION ON EXISTING PUMP STATION TAKEN FROM EXISTING DRAWINGS, CLEARBROOK AREA SANITARY SEWER FLOW INVESTIGATION AND 2006-2007 FIELD INVESTIGATIONS. FIELD INVESTIGATIONS WERE CONDUCTED IN 2006 AND 2007. DIMENSIONS ARE APPROXIMATE. CONTRACTOR TO FIELD VERIFY ALL DIMENSIONS AND ELEVATIONS AS REQUIRED TO COMPLETE THE WORK.
  2. REMOVE EXISTING FLOAT SWITCHES. PROVIDE MOUNTING BRACKET RETAIN EXISTING LOW LEVEL AND HIGH LEVEL PANEL. SEE SHEET 1002.
  3. SEE SHEET 1002 FOR INSTRUMENT AND PUMP CONTROL INFORMATION.
  4. SEE SHEET 0003 FOR MATERIAL SPECIFICATIONS.
  5. RESTRAINED FLANGED COUPLING ADAPTERS SHALL BE ROMAC INDUSTRIES MODEL RFCA, OR EQUAL.

## RENOVATION OF CLEARBROOK LIFT STATION

### DETAILS

# AECOM

AECOM  
JEFFERSON STREET  
SUITE 1600  
ROANOKE, VIRGINIA 24011  
(540) 857-3100

MARK	DATE	MADE BY	CHECKED	DESCRIPTION
Δ	01-2016	IPC	WCH	AS-BUILT REVISIONS PER E C PACE & CO., INC.

GRAPHIC SCALES

1/2"=1'-0"

CS501