

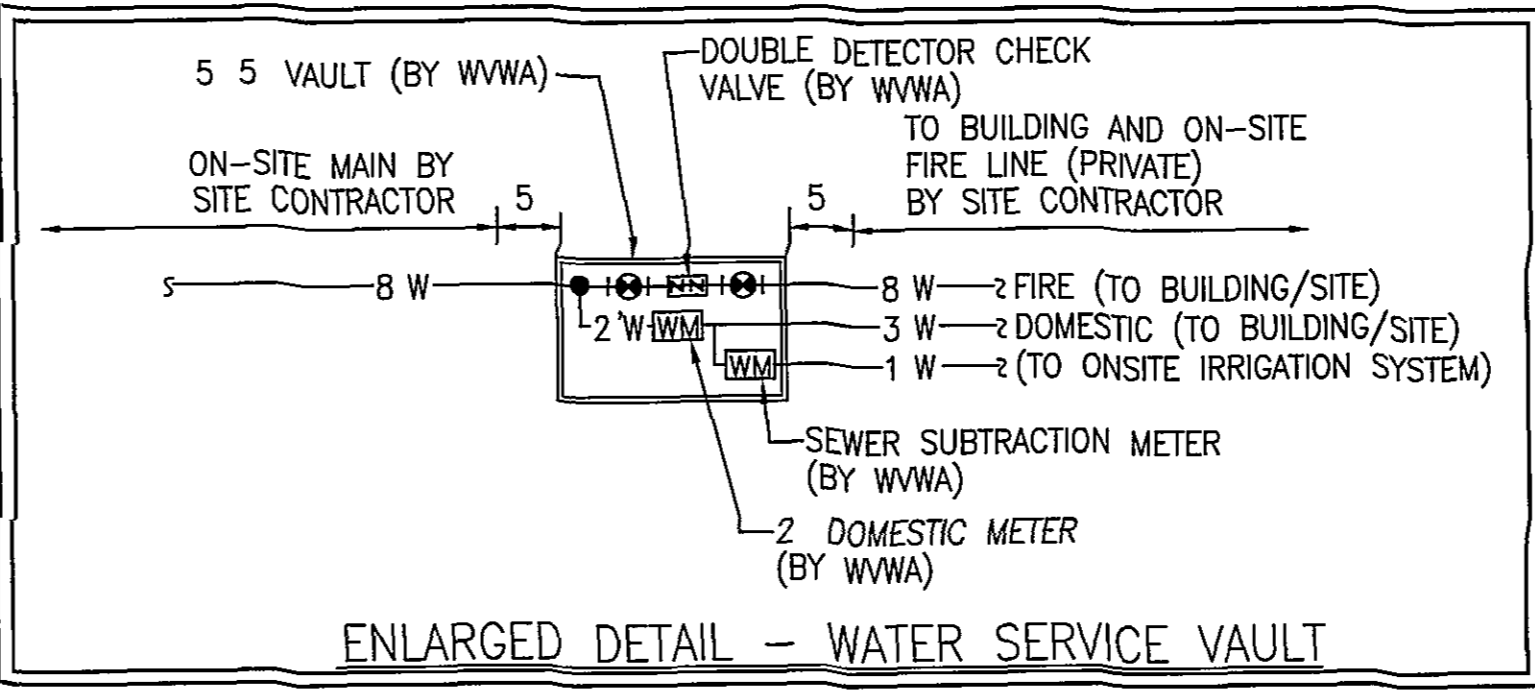
UTILITY NOTES

- CONTRACTOR TO CONFIRM LOCATION & INVERT PRIOR TO INSTALLATION OF NEW SERVICE LINES
- CONTRACTOR TO CONTACT THE WESTERN VIRGINIA WATER AUTHORITY (853-5700) PRIOR TO EXTENDING WATER & SEWER SERVICE LINES AND TO COORDINATE THE CONNECTION TO THE EXISTING WATER AND SEWER MAINS
- CONTRACTOR SHALL CONSULT WITH AMERICAN ELECTRIC POWER CO TO DETERMINE SIZE AND EXACT LOCATION OF TRANSFORMER PAD
- CLEAN-OUTS IN PAVEMENT OR SIDEWALK SHALL BE SET IN 6" DIAMETER CAST IRON VALVE BOX WITH TOP SET FLUSH WITH FINISHED PAVED GRADE
- GAS SERVICE LINE IS SHOWN FOR GENERAL INFORMATION ONLY EXACT LOCATION TO BE DETERMINED AND INSTALLED BY ROANOKE GAS COMPANY
- CONTRACTOR TO CONFIRM INVERT OF EXISTING MAIN OR LATERAL PRIOR TO INSTALLATION OF LATERAL
- REFER TO BUILDING PLANS FOR EXACT LOCATION OF UTILITY SERVICE CONNECTIONS.
- ALL WATER AND SEWER WORK SHALL CONFORM TO WESTERN VIRGINIA WATER AUTHORITY STANDARDS, LATEST EDITION.
- AREA OF OPEN CUT SHOWN IS MINIMUM REQUIRED TO INSTALL UTILITY LINES. CONTRACTOR SHALL BE REQUIRED TO REPLACE, IN ACCORDANCE WITH APPLICABLE DETAILS, ANY PAVEMENT DAMAGED OR REMOVED BY UTILITY INSTALLATION.

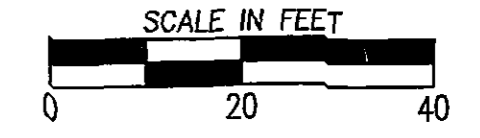
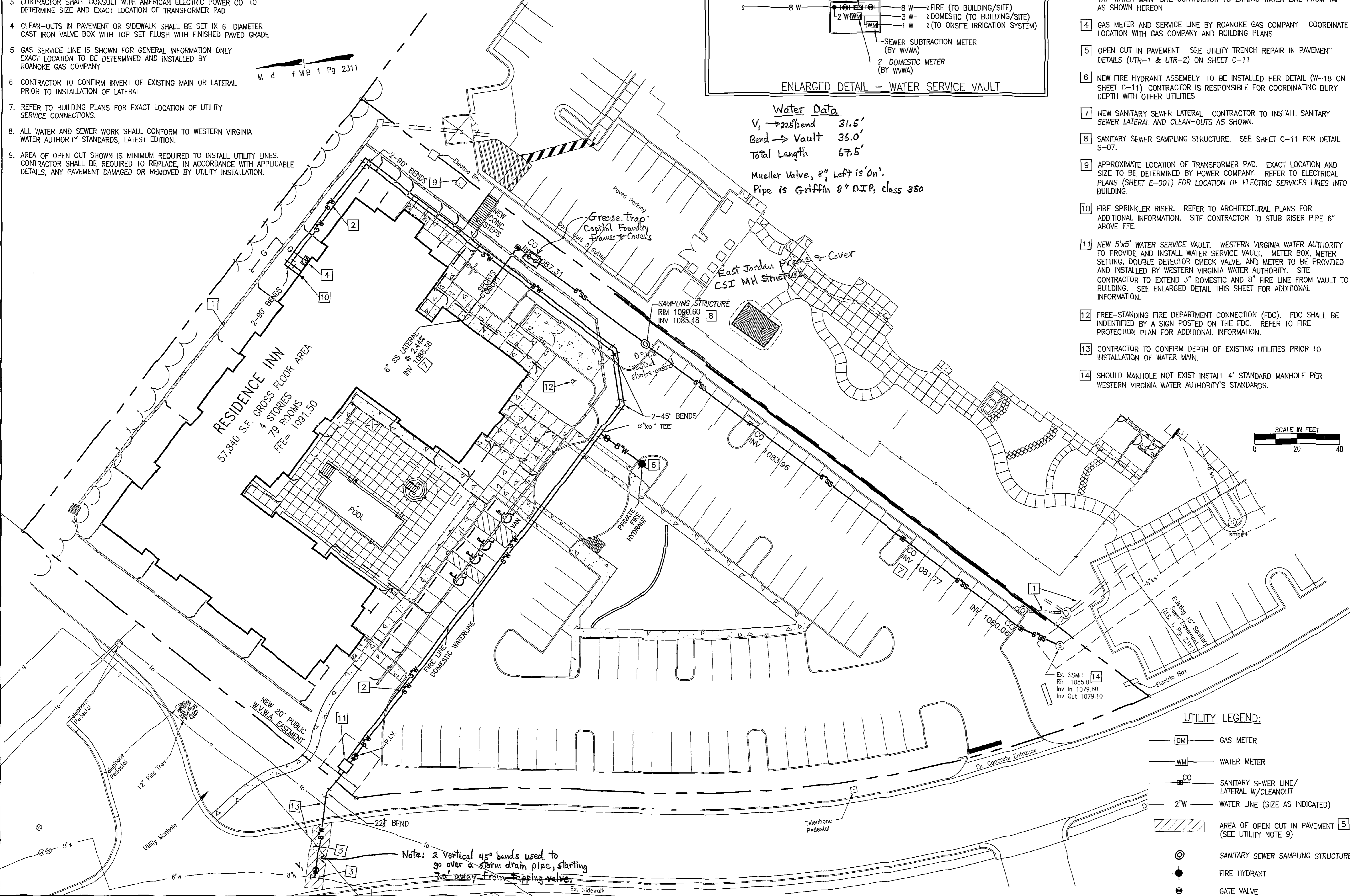
PUBLIC WATER AND SANITARY SEWER IS AVAILABLE TO THE PROJECT SITE AS SHOWN HEREON AND IS CONFIRMED BY WESTERN VIRGINIA WATER AUTHORITY AVAILABILITY NO 06-128 DATED APRIL 13 2006

KEYNOTES

- STORM DRAIN SHOWN HEREON FOR INFORMATION ONLY
- NEW WATER MAIN SIZE AS INDICATED
- SITE CONTRACTOR SHALL EXCAVATE TRENCH TO EXISTING MAIN WESTERN VIRGINIA WATER AUTHORITY TO PROVIDE TAPPING SLEEVE AND TAP WATER MAIN SITE CONTRACTOR TO EXTEND WATER LINE FROM TAP AS SHOWN HEREON
- GAS METER AND SERVICE LINE BY ROANOKE GAS COMPANY COORDINATE LOCATION WITH GAS COMPANY AND BUILDING PLANS
- OPEN CUT IN PAVEMENT SEE UTILITY TRENCH REPAIR IN PAVEMENT DETAILS (UTR-1 & UTR-2) ON SHEET C-11
- NEW FIRE HYDRANT ASSEMBLY TO BE INSTALLED PER DETAIL (W-18 ON SHEET C-11) CONTRACTOR IS RESPONSIBLE FOR COORDINATING BURY DEPTH WITH OTHER UTILITIES
- NEW SANITARY SEWER LATERAL CONTRACTOR TO INSTALL SANITARY SEWER LATERAL AND CLEAN-OUTS AS SHOWN.
- SANITARY SEWER SAMPLING STRUCTURE. SEE SHEET C-11 FOR DETAIL 5-07.
- APPROXIMATE LOCATION OF TRANSFORMER PAD. EXACT LOCATION AND SIZE TO BE DETERMINED BY POWER COMPANY. REFER TO ELECTRICAL PLANS (SHEET E-001) FOR LOCATION OF ELECTRIC SERVICES LINES INTO BUILDING.
- FIRE SPRINKLER RISER. REFER TO ARCHITECTURAL PLANS FOR ADDITIONAL INFORMATION. SITE CONTRACTOR TO STUB RISER PIPE 6" ABOVE FFE.
- NEW 5'x5' WATER SERVICE VAULT. WESTERN VIRGINIA WATER AUTHORITY TO PROVIDE AND INSTALL WATER SERVICE VAULT. METER BOX, METER SETTING, DOUBLE DETECTOR CHECK VALVE, AND METER TO BE PROVIDED AND INSTALLED BY WESTERN VIRGINIA WATER AUTHORITY. SITE CONTRACTOR TO EXTEND 3" DOMESTIC AND 8" FIRE LINE FROM VAULT TO BUILDING. SEE ENLARGED DETAIL THIS SHEET FOR ADDITIONAL INFORMATION.
- FREE-STANDING FIRE DEPARTMENT CONNECTION (FDC). FDC SHALL BE IDENTIFIED BY A SIGN POSTED ON THE FDC. REFER TO FIRE PROTECTION PLAN FOR ADDITIONAL INFORMATION.
- CONTRACTOR TO CONFIRM DEPTH OF EXISTING UTILITIES PRIOR TO INSTALLATION OF WATER MAIN.
- SHOULD MANHOLE NOT EXIST INSTALL 4' STANDARD MANHOLE PER WESTERN VIRGINIA WATER AUTHORITY'S STANDARDS.

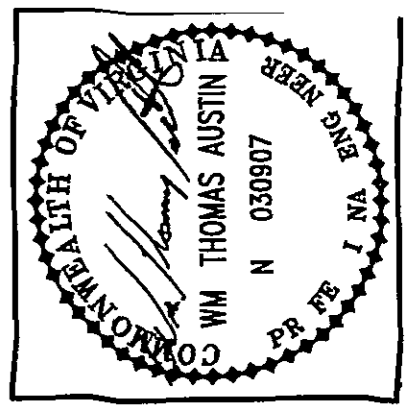


Water Data
 V_i → 225' bend 31.5'
 Bend → Vault 36.0'
 Total Length 67.5'
 Mueller Valve, 8" Left is On'.
 Pipe is Griffin 8" DIP, class 350



UTILITY LEGEND:

	GAS METER
	WATER METER
	SANITARY SEWER LINE/ LATERAL W/CLEANOUT
	WATER LINE (SIZE AS INDICATED)
	AREA OF OPEN CUT IN PAVEMENT [5] (SEE UTILITY NOTE 9)
	SANITARY SEWER SAMPLING STRUCTURE
	FIRE HYDRANT
	GATE VALVE



Revisions

1	SUBMISSION TO CITY	3/9/06
2	100% SUBMISSION	5/1/06
3	FINAL SUBMISSION TO CITY	6/22/06

Issue Date: MARCH 8, 2006
 Drawn By: CZV
 Designed By: CZV
 Checked By: WTA
 Date: 3/7/2006

Mattern & Craig
 CONSULTING ENGINEERS • SURVEYORS
 701 FIRST STREET, S.W.
 ROANOKE, VIRGINIA 24016
 (840) 345-9342
 FAX (840) 345-7891

SITE DEVELOPMENT PLANS
 RESIDENCE INN - WINSTON HOTELS
UTILITY PLAN
 CITY OF ROANOKE, VIRGINIA

Vertical Scale: N/A
 Horizontal Scale: 1" = 20'
 Commission Number: 2522
 Sheet No.: **C-5**