

# RIVERSIDE CORPORATE CENTER ROANOKE, VIRGINIA

## VIRGINIA TECH CARILION (VTC) BIOMEDICAL RESEARCH EXPANSION

### CITY COMPREHENSIVE PLAN SUBMITTAL MARCH 8, 2018

### AECOM PROJECT NO. 60544603 VA TECH PROJECT CODE: 208-18269-000

#### CITY CONSTRUCTION NOTES

- NOTICE: ALL LANDOWNERS, DEVELOPERS AND CONTRACTORS
- FAILURE TO COMPLY WITH THE CONSTRUCTION PROCEDURE REQUIREMENTS LISTED BELOW MAY RESULT IN THE COSTLY REMOVAL OF STRUCTURES, TIME DELAYS OR THE ISSUANCE OF A STOP WORK ORDER.
- CONSTRUCTION PROCEDURE REQUIREMENTS
- RIGHT-OF-WAY EXCAVATION PERMIT - PRIOR TO THE COMMENCEMENT OF ANY DIGGING, ALTERATION OR CONSTRUCTION WITHIN THE PUBLIC RIGHT-OF-WAY (STREETS, ALLEYS, PUBLIC EASEMENTS), A RIGHT-OF-WAY EXCAVATION PERMIT SHALL BE OBTAINED BY THE CONTRACTOR FROM THE CITY OF ROANOKE.
  - LAND DISTURBANCE PERMIT - AN APPROVED EROSION AND SEDIMENT CONTROL PLAN FOR ANY BORROW/FILL SITES ASSOCIATED WITH THE PROJECT MUST BE SUBMITTED PRIOR TO THE ISSUANCE OF A LAND DISTURBANCE PERMIT.
  - PLANS AND PERMITS - A COPY OF THE PLANS AS APPROVED BY THE CITY (SIGNED BY THE PROPER CITY OFFICIALS) AND ALL PERMITS ISSUED BY THE CITY SHALL BE AVAILABLE AT THE CONSTRUCTION SITE AT ALL TIMES OF ONGOING CONSTRUCTION.
  - LOCATION OF UTILITIES - THE CONTRACTOR SHALL VERIFY THE LOCATION OF ALL EXISTING UTILITIES PRIOR TO THE COMMENCEMENT OF ANY CONSTRUCTION.
  - CONSTRUCTION ENTRANCE - THE CONTRACTOR SHALL INSTALL AN ADEQUATE CONSTRUCTION ENTRANCE FOR ALL CONSTRUCTION RELATED EGRESS FROM THE SITE. SIZE AND COMPOSITION OF CONSTRUCTION ENTRANCE SHALL BE AS SHOWN ON THE PLANS.
  - STREETS TO REMAIN CLEAN - IT SHALL BE THE RESPONSIBILITY OF THE CONTRACTOR TO INSURE THAT THE PUBLIC STREET ADJACENT TO THE CONSTRUCTION ENTRANCE REMAINS FREE OF MUD, DIRT, DUST, AND/OR ANY TYPE OF CONSTRUCTION MATERIALS OR LITTER AT ALL TIMES.
  - BARRIER/DITCHES - THE CONTRACTOR SHALL MAINTAIN THE INTEGRITY OF ALL EXISTING DITCHES AND SHALL FURNISH AND ENSURE THAT ALL BARRIER/DITCHES PROPER AND NECESSARY FOR THE SAFETY OF THE PUBLIC ARE IN PLACE.
  - SEWER AND PAVEMENT REPLACEMENT - CONSTRUCTION OF SANITARY SEWERS AND THE REPLACEMENT OF PAVEMENT SHALL BE IN ACCORDANCE WITH APPROVED STANDARDS AND SPECIFICATIONS OF THE CITY OF ROANOKE AND THE WESTERN VIRGINIA WATER AUTHORITY.
  - APPROVED PLANS/CONSTRUCTION CHANGES - ANY CHANGE OR VARIATION FROM CONSTRUCTION DESIGN AS SHOWN ON THE OFFICIALLY APPROVED PLANS SHALL BE APPROVED BY THE EROSION AND SEDIMENT CONTROL AGENT PRIOR TO SAID CHANGES OR VARIATION IN CONSTRUCTION BEING MADE.
  - FINAL ACCEPTANCE/COMPLETION - THE OWNER OR DEVELOPER SHALL FURNISH THE CITY OF ROANOKE'S PLANNING BUILDING AND DEVELOPMENT DEPARTMENT WITH A FIELD SURVEYED FINAL CORRECT SET OF AS-BUILT PLANS OF THE NEWLY CONSTRUCTED STORM RAIN AND/OR STORMWATER MANAGEMENT FACILITIES PRIOR TO FINAL ACCEPTANCE AND ISSUANCE OF A CERTIFICATE OF OCCUPANCY BY THE CITY. AS-BUILT PLANS SHALL BE PROVIDED IN THE STATE PLANE VIRGINIA SOUTH COORDINATE SYSTEM, NAD 1983, FIPS 4502 FEET, US SURVEY FEET, DATUM NA 83, IN THE FORM OF: 1 PAPER COPY AND 2 DIGITAL AUTOCAD FILE.

#### INDEX OF DRAWINGS

##### GENERAL

- C-001 COVER SHEET
- C-001 CIVIL NOTES AND LEGEND
- C-002 EXISTING PUBLIC UTILITY EASEMENTS
- C-003 PROPOSED PUBLIC UTILITY EASEMENTS
- C-101 EXISTING CONDITIONS AND DEMOLITION PLAN
- C-102 SITE PLAN
- C-103 UTILITY PLAN
- C-104 GRADING PLAN
- C-105 EROSION AND SEDIMENT CONTROL PLAN (INITIAL)
- C-106 EROSION AND SEDIMENT CONTROL PLAN (FINAL)
- C-201 UTILITY PROFILES
- C-400A ENLARGED WATER AND SANITARY SEWER PLAN (AREA A)
- C-400B ENLARGED GRADING PLAN (AREA B)

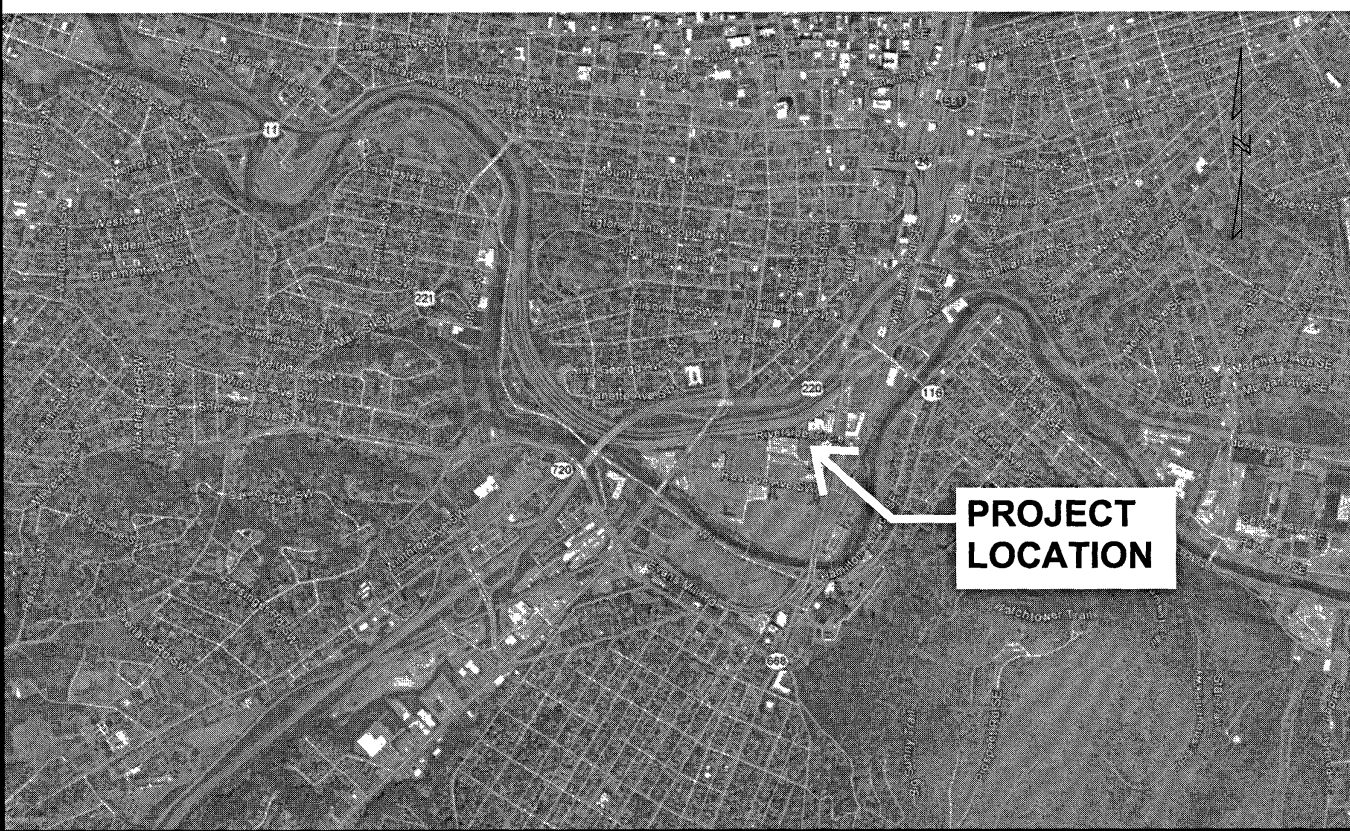
##### CIVIL (CONTINUED)

- C-400C ENLARGED GRADING PLAN (AREA C)
- C-400D ENLARGED GRADING PLAN (AREA D)
- C-400E ENLARGED GRADING PLAN (AREA E)
- C-501 CIVIL DETAILS
- C-502 CIVIL DETAILS
- C-503 CIVIL DETAILS
- C-504 CIVIL DETAILS
- C-501 POST-DEVELOPMENT DRAINAGE MAP

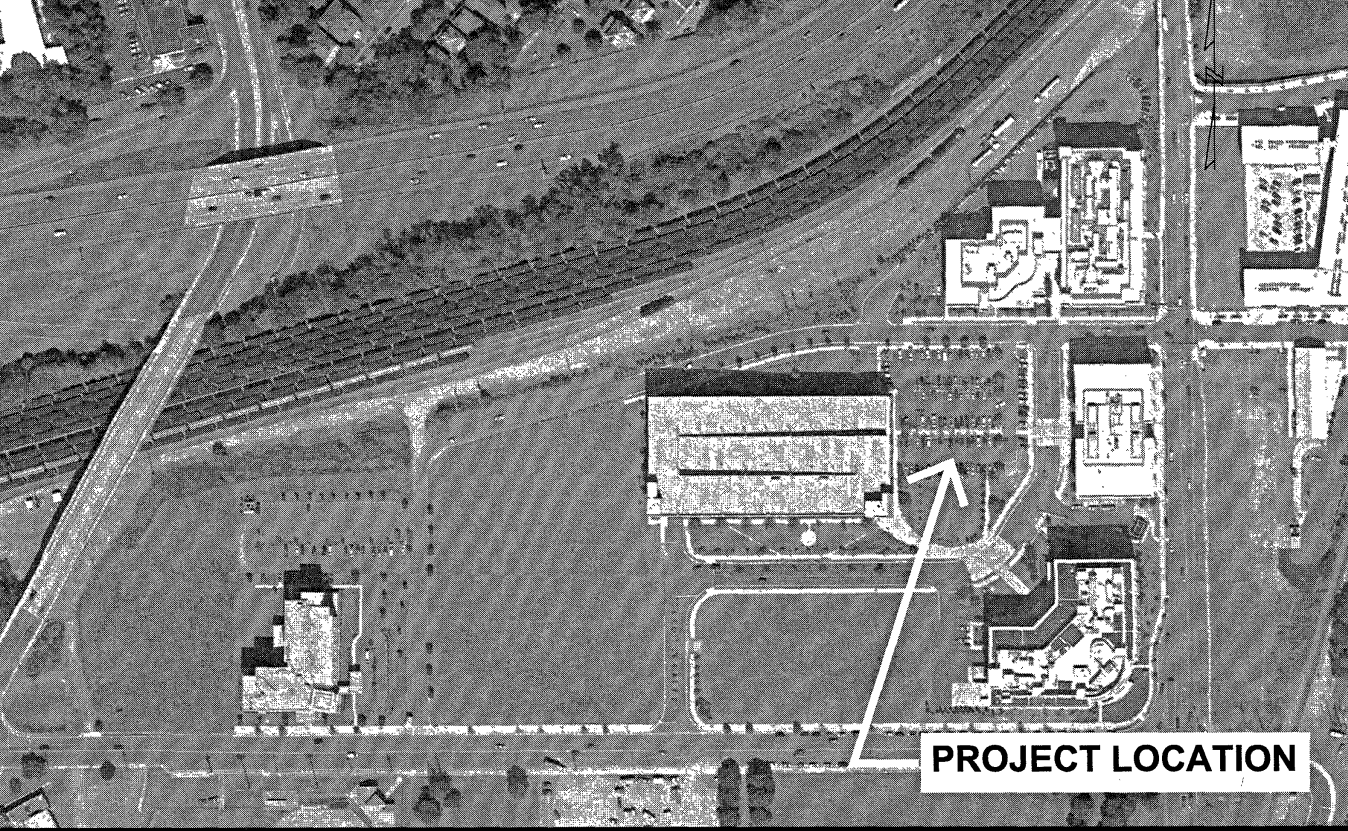
##### LANDSCAPE

- LS100 PLANTING PLAN

#### VICINITY MAP



#### LOCATION MAP



#### ADJACENT PROPERTIES



#### CITY APPROVAL STAMP

AECOM

#### PROJECT

VIRGINIA TECH CARILION (VTC)  
BIOMEDICAL RESEARCH  
EXPANSION

VIRGINIA TECH  
4 RIVERSIDE CIRCLE  
ROANOKE, VA 24016

#### CLIENT

CARILIONCLINIC  
213 MCCLANAHAN ST. S.W.,  
THIRD FLOOR  
ROANOKE, VA 24014  
PHONE: 540-981-7024

VIRGINIA  
TECH.

Virginia-Maryland  
College of Veterinary Medicine

#### CONSULTANT

AECOM  
10 South Jefferson Street, Suite 1600  
Roanoke, Virginia 24011  
540-857-3100 fax 540-857-3180 fax  
www.aecom.com

SLAM  
www.slamcof.com

Wagner Architecture, PLLC  
1000 N. 10TH ST., SUITE 200, ROANOKE, VA 24011

HILL  
STUDIO

#### REGISTRATION

PROFESSIONAL ENGINEER  
ANDREW C. FREELAND  
Lic. No. 43081  
03/08/18

#### ISSUE/REVISION

NO.	DATE	DESCRIPTION
1	03/08/2018	CITY CP SUBMISSION
2	01/19/2018	CITY CP SUBMISSION
3	12/04/2017	FOR PRESUBMISSION MEETINGS
4	12/01/2017	FOUNDATION SUBMISSION
5	DATE	DESCRIPTION

#### KEY PLAN

#### PROJECT NUMBER

60544603

#### SHEET TITLE

COVER SHEET

#### SHEET NUMBER

G-001