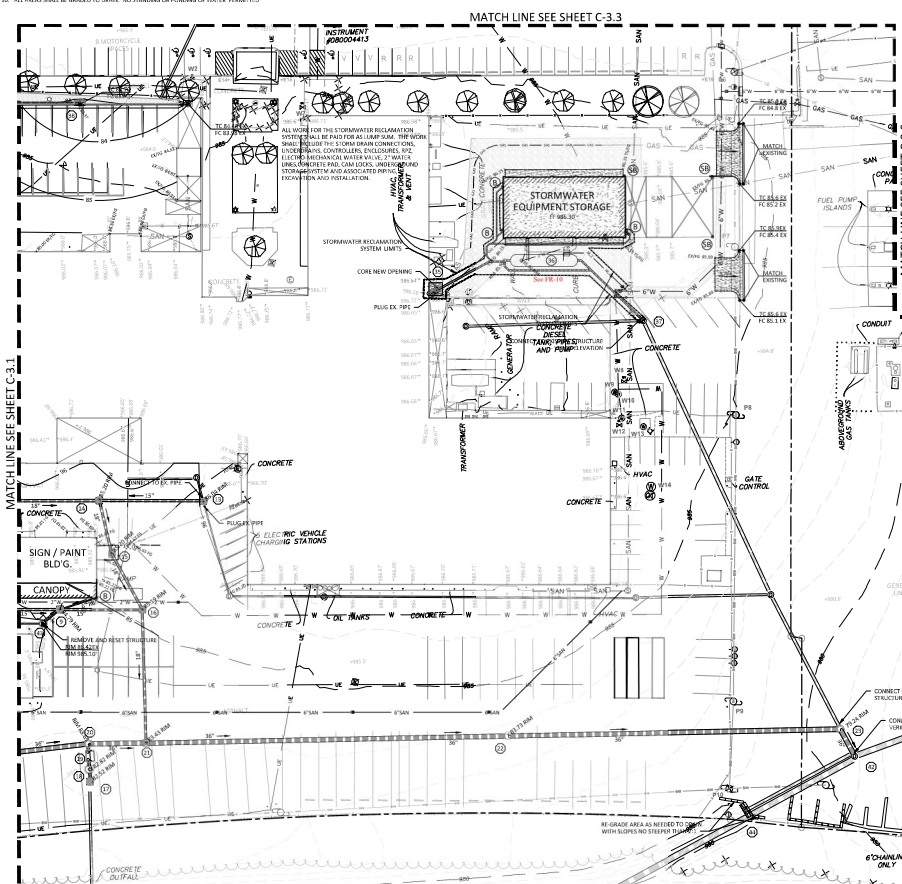
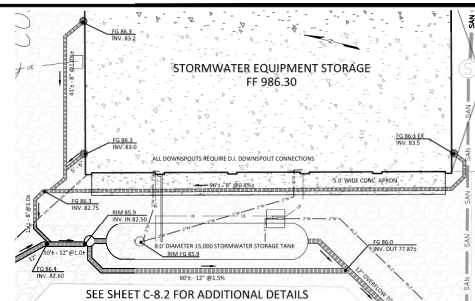


[illegible]

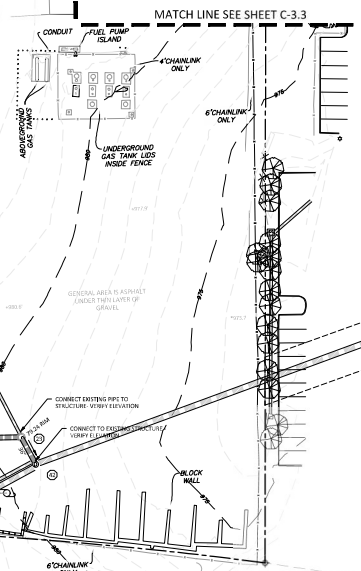
## GRADING PLAN



SEE SHEET C-8.2 FOR ADDITIONAL DETAILS

**STORMWATER RECLAMATION SYSTEM**

See FR-10



0 15' 30' 60'

BENCHMARK  
TOP OF MONUMENT  
= 978.60'

**LEGEND**

8" COMPACTED 3A AGGREGATE

CONCRETE / NO CONCRETE

PROPOSED STRUCTURE

WATER VALVE

FIRE HYDRANT

PROPERTY LINE

INTERMEDIATE CURB

HIGH CONTOUR

DRAINAGE / STORM DRAIN PIPE

UNDERGROUND ELECTRICAL

SANITARY SEWER LINE

WATER LINE

DRAINAGE DITCH

CHAIN LINK FENCE

DOWNPOUT W/ TYP. SLOPE

DOWNPOUT W/ SHALLOWSLOPE

DOWNPOUT W/ RAILROAD TIE

DOWNPOUT WITH RAILROAD TIE

TOP OF WALL ELEVATION

PAVED GRADE ELEVATION

TOP OF SOA ELEVATION

PROPOSED GRADE ELEVATION

80-43 TW

74.80 RW

X 77.88 RL = 77.78

±2.49 L5

±2.49 L5

DATE: NOV. 1, 2019

REVISIONS

Δ	_____
Δ	_____
Δ	_____
Δ	_____
Δ	_____

**HUGHES**  
**ASSOCIATES**  
**ARCHITECTS & ENGINEERS**  
856 ELW AVENUE SW | ROANOKE, VIRGINIA 24018  
434.342.4002  
[www.hughesat.com](http://www.hughesat.com)



PUBLIC WORKS SERVICE CENTER  
IMPROVEMENTS  
**CITY OF ROANOKE**  
1802 Courtland Road  
Roanoke, Virginia

DRAWN BY: msja  
CHECKED BY: msja

GRADING  
PLAN, NOTES  
AND DETAILS

COMMONWEALTH OF VIRGINIA  
08762220  
MARK JOHN AYLES  
Mark J. Ayles  
Lic. No. 034170  
PROFESSIONAL ENGINEER

COMMISSION No.  
19061  
SHEET  
C-3.2  
© COMMISSION 2002  
montipassio@comptel.it