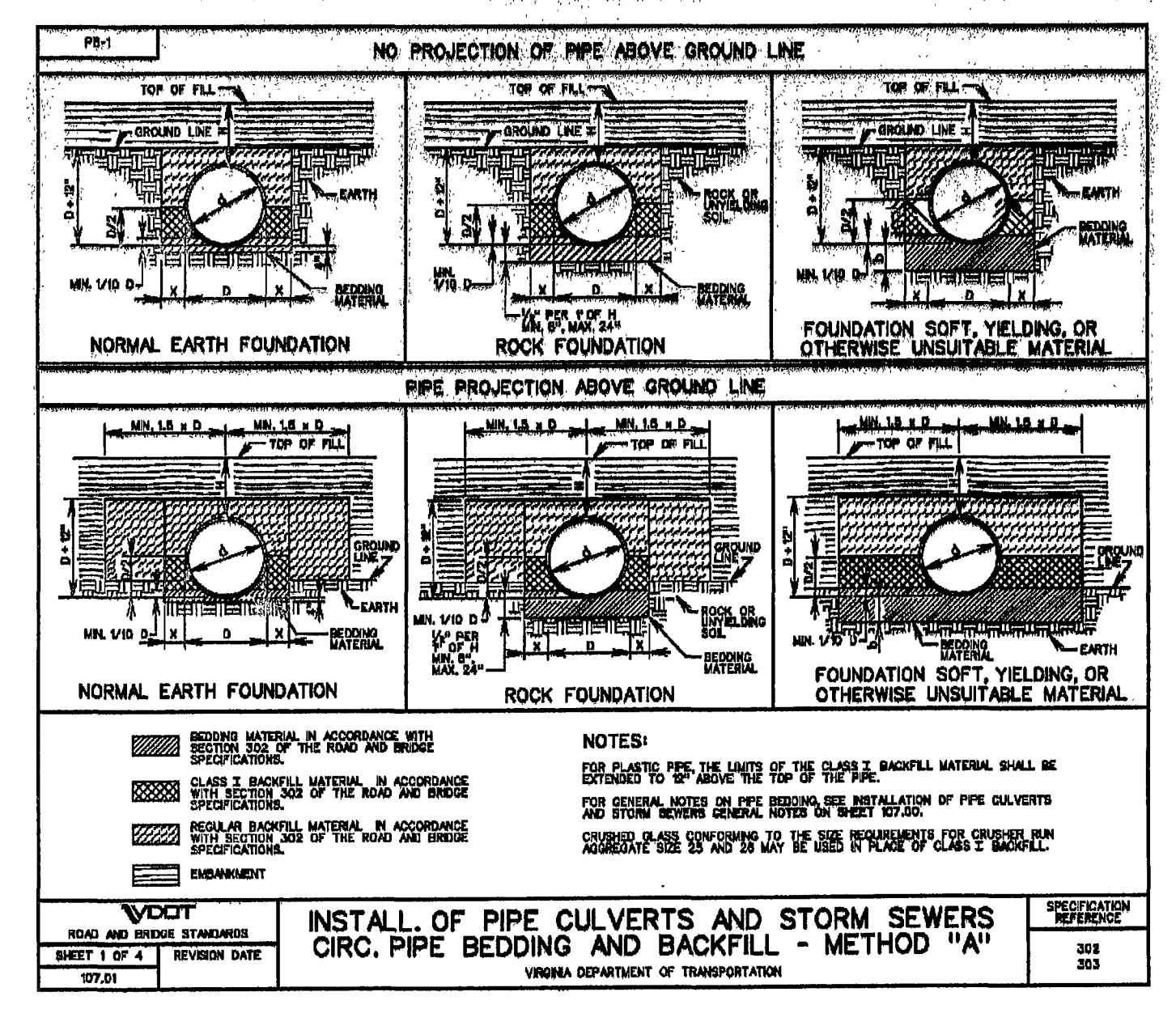
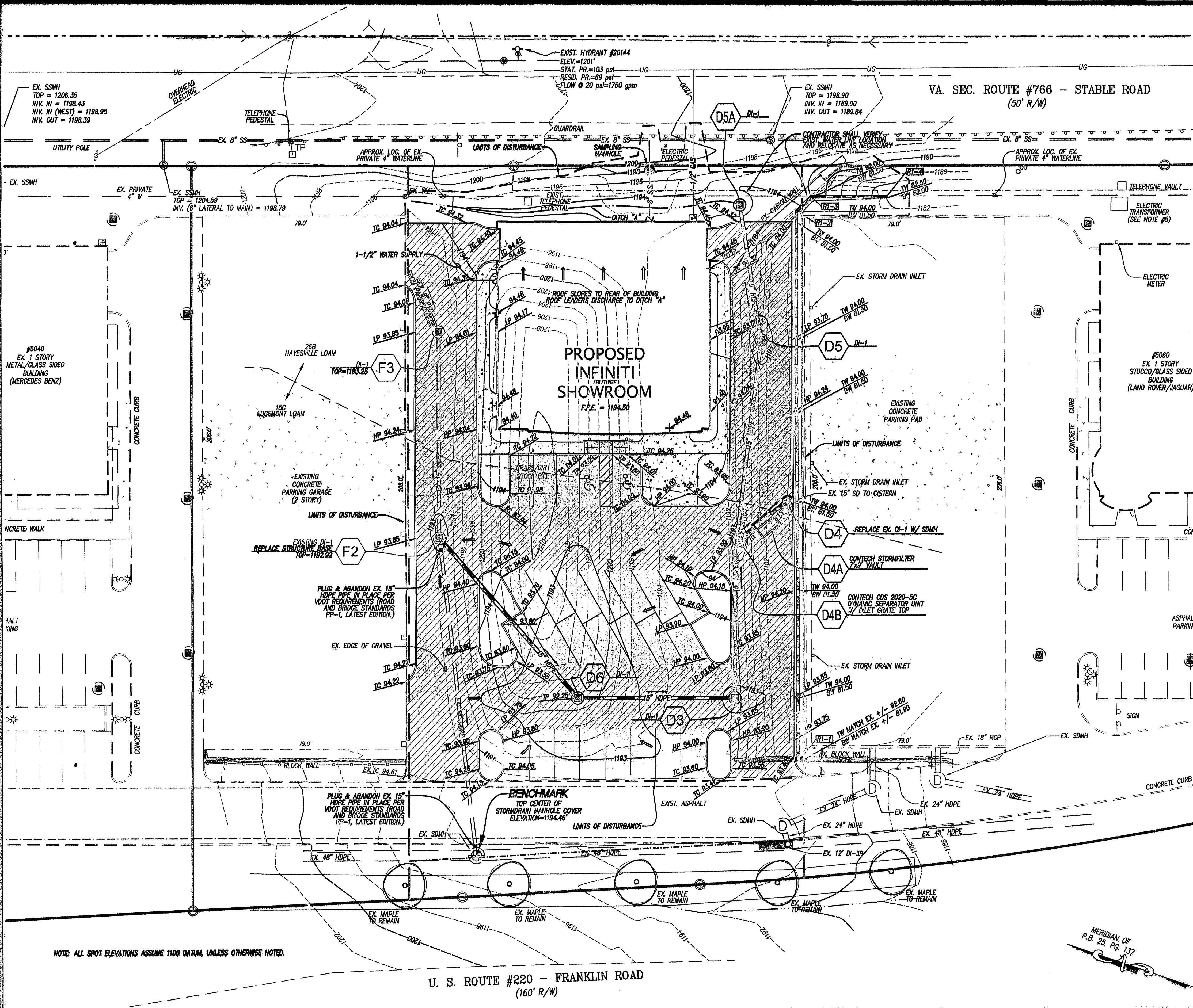


11219comp-04.dwg 11219comp-04.dwg



INSTALL. OF PIPE CULVERTS AND STORM SEWERS
CIRC. PIPE BEDDING AND BACKFILL - METHOD "A"

Legend table with columns for ITEM, EXISTING, and PROPOSED. Items include Pavement, Heavy-duty Pavement, Sidewalk or Concrete Pad, Number of Parking Spaces, Storm Drain Line, Storm Drain Inlet, Sanitary Sewer Manhole, Sanitary Sewer Line, Waterline, Hydrant, Gate Valve, Underground Electric Line, Overhead Electric Line, Underground Telephone Line, Underground Gas Line, Utility Pole, Exterior Lamp and Post, Fence, Contours, Spot Elevation, and Trees.

Dig With CARE
Keep Virginia Safe!

- Call All Utility at 811 before you dig.
- Always dig required time for marking.
- Respect the marks.
- Excavate carefully.



ABBREVIATIONS

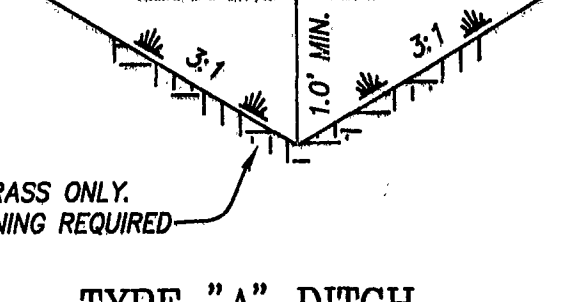
LEGEND

Table with columns for ITEM, EXISTING, and PROPOSED. It lists various site features and their corresponding symbols and line styles. For example, 'Pavement' is shown as a dashed line for existing and a hatched area for proposed. 'Spot Elevation' is shown as a circle with a number for existing and a circle with a number and 'TC' for proposed.

GRADING PLAN

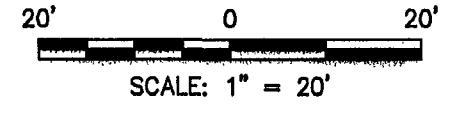
GRADING NOTES

- AREAS TO BE GRADED SHALL BE CLEARED OF ALL VEGETATION, STRUCTURES, AND OTHER PHYSICAL FEATURES IN PREPARATION OF GRADING.
- PROPOSED SPOT ELEVATIONS ARE TO TOP OF CURB, UNLESS INDICATED OTHERWISE.
- TOPSOIL SHALL BE REMOVED FROM THE CLEARED AREA AND STOCKPILED FOR FUTURE USE.
- FILL MATERIAL SHALL BE FREE FROM ORGANIC MATTER AND ROCKS LARGER THAN 6 INCHES IN DIAMETER.
- FILL MATERIAL SHALL BE PLACED AND COMPACTED IN EIGHT (8) INCH LOOSE LIFTS AND COMPACTED TO AT LEAST NINETY-FIVE (95) PERCENT OF THE MATERIAL'S MAXIMUM DRY DENSITY AS DETERMINED BY ASTM D698, STANDARD PROCTOR. MAINTAIN MOISTURE CONTENT OF FILL MATERIAL WITHIN THREE (3) PERCENT OF OPTIMUM TO ATTAIN REQUIRED COMPACTION DENSITY.
- NO SUBSURFACE SOILS INFORMATION HAS BEEN FURNISHED TO THE DESIGNING ENGINEER (LUMSDEN ASSOCIATES, P.C.). A QUALIFIED GEOTECHNICAL ENGINEER, LICENSED IN THE STATE OF VIRGINIA, SHALL BE CONSULTED CONCERNING SOIL STABILITY, SLOPE STABILIZATION, SOIL COMPACTION, TESTING, AND OTHER SOIL CHARACTERISTICS. LUMSDEN ASSOCIATES ASSUMES NO RESPONSIBILITY OR LIABILITY RELATING TO FAILURES RESULTING FROM SAME.



TYPE "A" DITCH
NO SCALE

SCALE: 1" = 20'



LUMSDEN ASSOCIATES, P.C.
ENGINEERS-SURVEYORS-PLANNERS
ROANOKE, VIRGINIA

4664 BRAMBLETON AVENUE
P.O. BOX 20660
ROANOKE, VIRGINIA 24018

PHONE: (800) 774-4411
FAX: (800) 772-9445
E-MAIL: MAIL@LUMSDENPC.COM

COMMONWEALTH OF VIRGINIA
HOWARD P. BOGGS, II
Landscape Architect
Lic. No. 000982
3/10/12

APPROVED
SITE DEVELOPMENT PLANS FOR
ROANOKE INFINITI
PREPARED FOR
William G. Daniel & Associates, P.A.
CAVE SPRING MAGISTERIAL DISTRICT
ROANOKE COUNTY, VIRGINIA

Table with columns for REVISIONS (NO., DATE, DESCRIPTION) and DATE (March 10, 2012). It also includes a SCALE (1" = 20') and SHEET 4 OF 8.