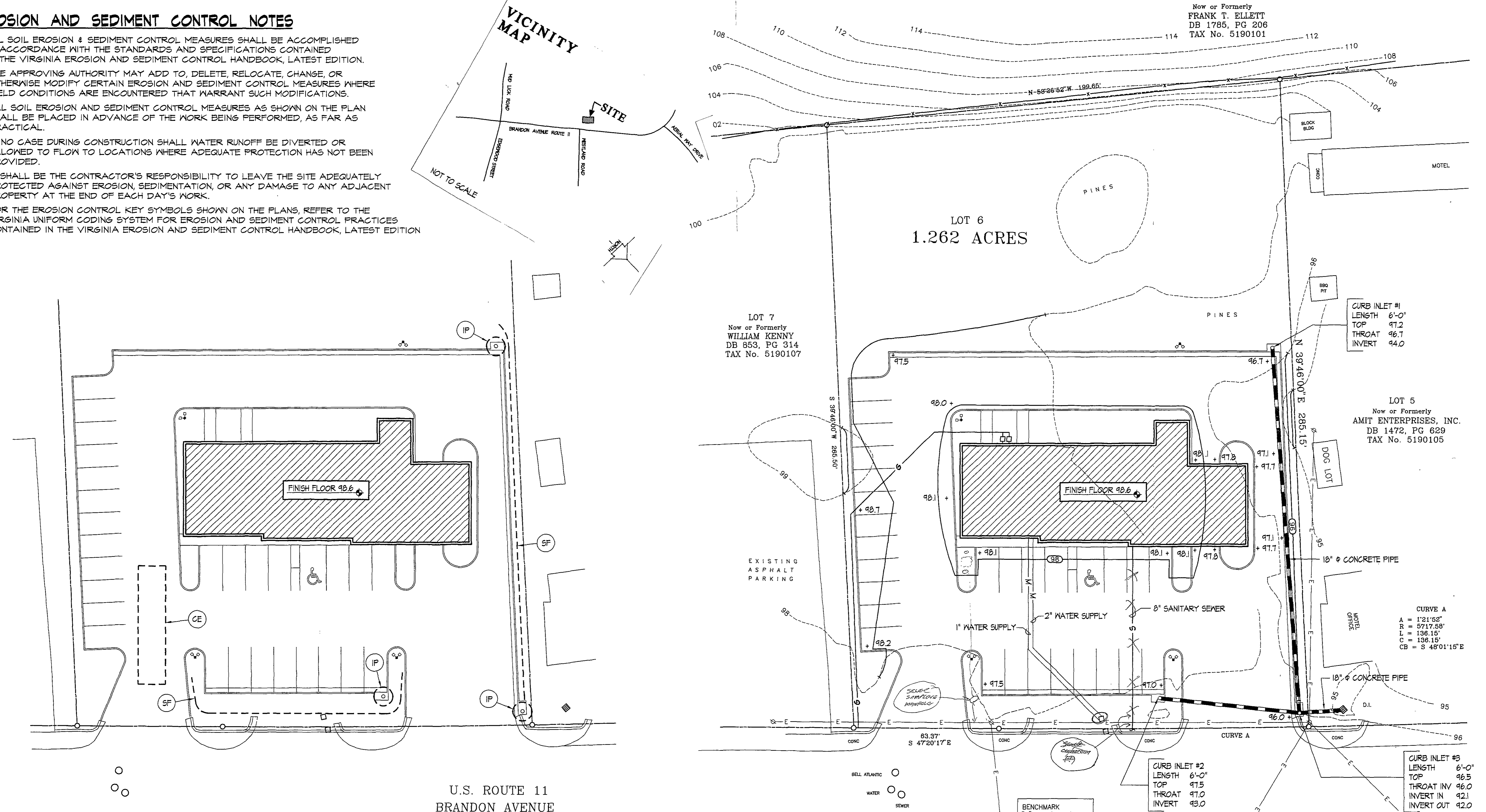


EROSION AND SEDIMENT CONTROL NOTES

1. ALL SOIL EROSION & SEDIMENT CONTROL MEASURES SHALL BE ACCOMPLISHED IN ACCORDANCE WITH THE STANDARDS AND SPECIFICATIONS CONTAINED IN THE VIRGINIA EROSION AND SEDIMENT CONTROL HANDBOOK, LATEST EDITION.
2. THE APPROVING AUTHORITY MAY ADD TO, DELETE, RELOCATE, CHANGE, OR OTHERWISE MODIFY CERTAIN EROSION AND SEDIMENT CONTROL MEASURES WHERE FIELD CONDITIONS ARE ENCOUNTERED THAT WARRANT SUCH MODIFICATIONS.
3. ALL SOIL EROSION AND SEDIMENT CONTROL MEASURES AS SHOWN ON THE PLAN SHALL BE PLACED IN ADVANCE OF THE WORK BEING PERFORMED, AS FAR AS PRACTICAL.
4. IN NO CASE DURING CONSTRUCTION SHALL WATER RUNOFF BE DIVERTED OR ALLOWED TO FLOW TO LOCATIONS WHERE ADEQUATE PROTECTION HAS NOT BEEN PROVIDED.
5. IT SHALL BE THE CONTRACTOR'S RESPONSIBILITY TO LEAVE THE SITE ADEQUATELY PROTECTED AGAINST EROSION, SEDIMENTATION, OR ANY DAMAGE TO ANY ADJACENT PROPERTY AT THE END OF EACH DAY'S WORK.
6. FOR THE EROSION CONTROL KEY SYMBOLS SHOWN ON THE PLANS, REFER TO THE VIRGINIA UNIFORM CODING SYSTEM FOR EROSION AND SEDIMENT CONTROL PRACTICES CONTAINED IN THE VIRGINIA EROSION AND SEDIMENT CONTROL HANDBOOK, LATEST EDITION

Now or Formerly
FRANK T. ELLETT
DB 1785, PG 206
TAX No. 5190101

VICINITY MAP
NOT TO SCALE



EROSION AND SEDIMENT CONTROL DIAGRAM
SCALE 1" = 20'-0"
GRAPHIC SCALE - FEET

SITE GRADING AND UTILITY PLAN
SCALE 1" = 20'-0"
GRAPHIC SCALE - FEET

U.S. ROUTE 11
BRANDON AVENUE
VARIABLE R/W
NOTES:
1. THE CONTRACTOR SHALL FIELD VERIFY ALL EXISTING CONDITIONS
2. REMOVE ALL EXISTING STRUCTURES
T# 5190106
prep s s lat

NOTE
ALL EXISTING CONDITIONS ARE AS INDICATED ON DOCUMENTS PREPARED BY CORNERSTONE LAND SURVEYING, INC FOR EDWARD N. THORNHILL AND LINDA T. IVES DATED JANUARY 9, 1998
REFERENCE - ROANOKE CITY TAX No. 5190106
LOT 6, BLOCK 1
WESTLAND SUBDIVISION
PLAT BK 1, PG 219 (ROANOKE COUNTY)

SKYLINE CLEANERS
ROANOKE, VIRGINIA

plant 098-043

PROJECT ARCHITECT RLJ JR	COMMISSION NUMBER 2019
TECHNICIANS RMT	DATE 15 MAY 1998

C2

JONES & JONES ASSOCIATES ARCHITECTS PC