

GENERAL NOTES:

- ALL WORK WITHIN CONTRACT 1 BOUNDARY LINE SHALL FOLLOW THE REQUIREMENTS SET FORTH IN THE APPROVED ESC AND SWM PLAN AND COMPLY WITH THE GENERAL VPDES PERMIT FOR DISCHARGES OF STORMWATER FROM CONSTRUCTION ACTIVITIES.
- UTILITY ALIGNMENTS CAN BE VIEWED ON SHEETS C-201 THROUGH C-203, AND C-301 THROUGH C-303.

SHEET KEYNOTES:

- PROVIDE 8-INCH RESTRAINED JOINT GATE VALVE AND CONNECT TO 8-INCH PIPE BY TANK CONSTRUCTION CONTRACTOR. USE HIMAX GRIP COUPLING, OR APPROVED EQUAL, TO CONNECT TO TANK PIPING. COORDINATE WITH TANK CONSTRUCTION CONTRACTOR FOR PIPE MATERIAL AND FINAL ENDING LOCATION.
- CONTRACT 3 CONTRACTOR (CALDWELL) WILL PROVIDE AND INSTALL LEVEL ELEMENT LE-4301, PUMP P-4302 AND OTHER ASSOCIATED EQUIPMENT INCLUDING LIGHTS AND POWER PANELS. CONTRACT 1 TO PROVIDE ELECTRICAL STUBOUT FOR BOTH POWER AND CONTROLS AS SHOWN ON THE ELECTRICAL SHEETS AND PROVIDE A LOCATION TO LAND 10. CONTRACT 3 CONTRACTOR WILL PROVIDE AND CONNECT ALL WIRES TO LANDING LOCATION PROVIDED BY CONTRACT 1 CONTRACTOR.

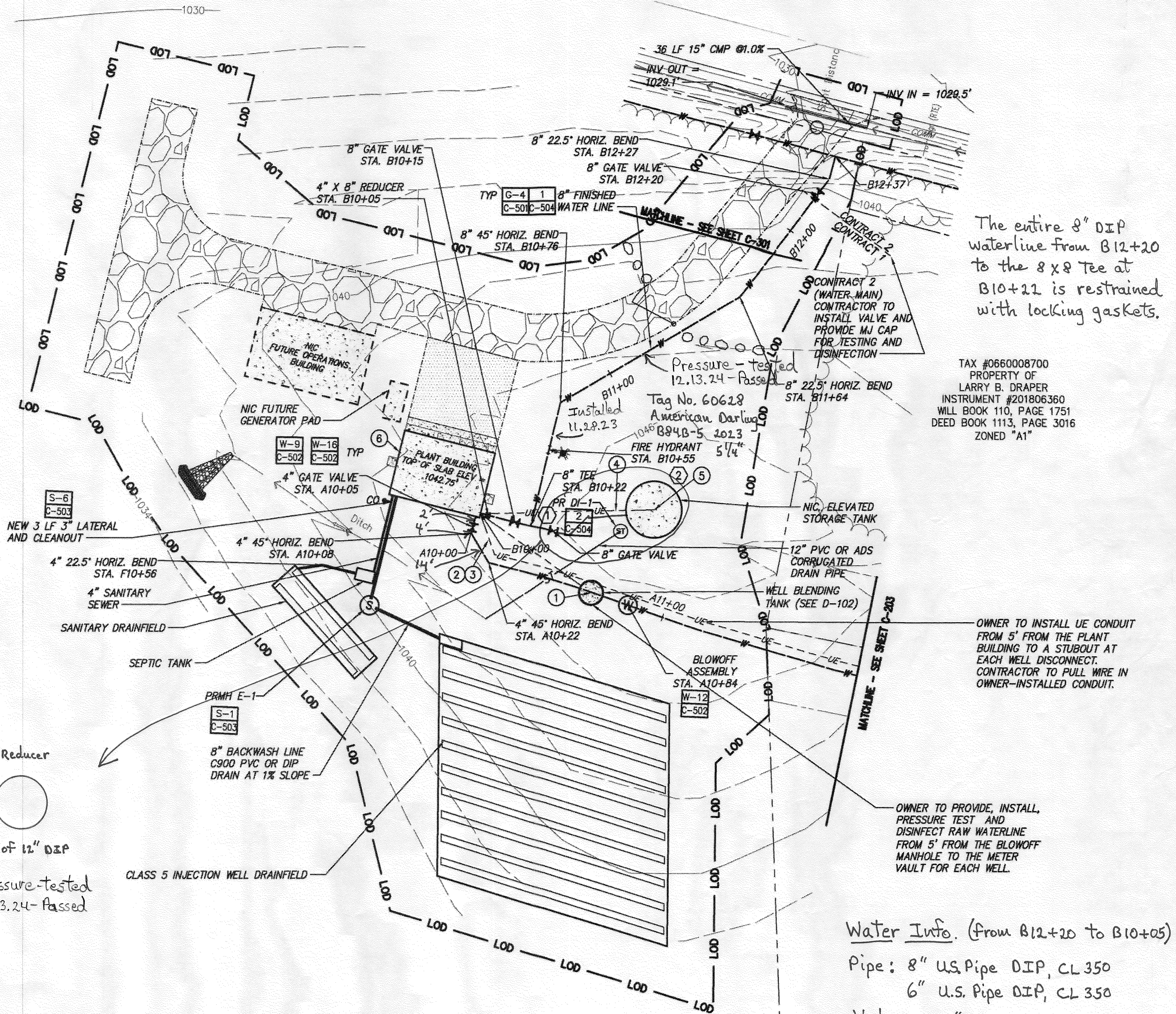
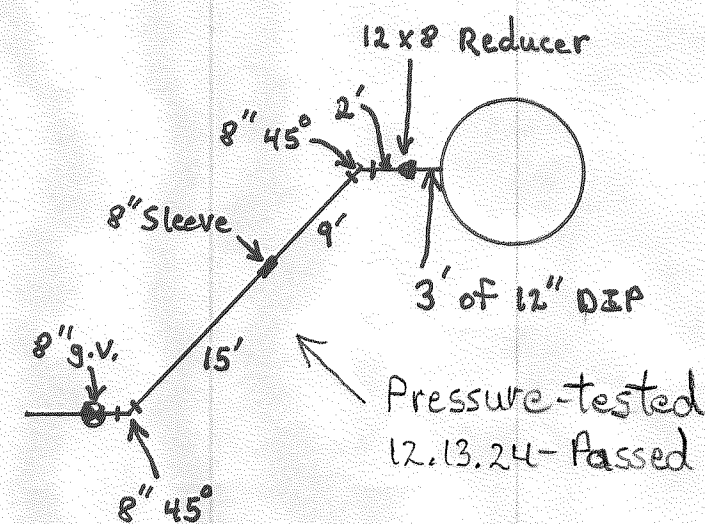
ELECTRICAL SHEET KEYNOTES:

- WELL BLENDING TANK, LOCATION OF LEVEL ELEMENT LE-1701, ROUTE SIGNAL PER E-005 IN 1" BELOW GRADE AND 2+10+0ND; 1" C CIRCUIT LV/26 FOR 120V/1PH POWER TO BLENDING TANK HEAT TRACING.
- TWO 2" C BELOW GRADE TO WELL FROM WELL PUMP A MOTOR STARTER TO WELL A, ONE FOR POWER WIRING AND ONE SPARE WITH PULL STRING. SEE ELECTRICAL DRAWINGS FOR ADDITIONAL INFORMATION.
- TWO 2" C BELOW GRADE TO WELL FROM WELL PUMP E MOTOR STARTER TO WELL E, ONE FOR POWER WIRING AND ONE SPARE WITH PULL STRING. SEE ELECTRICAL DRAWINGS FOR ADDITIONAL INFORMATION.
- BELOW GRADE CONDUITS FROM WATER TREATMENT PLANT TO STORAGE TANK AS FOLLOWS:
 - 1" C FOR 460V POWER TO TANK MIXER.
 - 2" C FOR 208V/3PH POWER TO TANK PANELBOARD.
 - 2" C FOR ANALOG SIGNAL WIRING
 - 2" C FOR DISCRETE SIGNAL WIRING
 - 2" C SPARE WITH PULL STRING

SEE E SERIES ELECTRICAL DRAWINGS FOR WIRING REQUIREMENTS

- WATER STORAGE TANK, LOCATION OF LEVEL TRANSMITTER LIT-9001, FLOW TRANSMITTER FIT-9005, MIXER MOTOR STARTER JC-9006 AND INTRUSION DETECTION DOOR CONTACT YIA-9010. SEE ELECTRICAL DRAWINGS FOR ADDITIONAL INFORMATION.
- LOCATION OF ELECTRICAL SERVICE ENTRANCE AND UTILITY METER, COORDINATE ELECTRICAL SERVICE ENTRANCE WITH AEP.

TAX #0660008500 PROPERTY OF
WESTERN VIRGINIA WATER AUTHORITY
DEED BOOK 1188, PAGE 377
PLAT BOOK 1039, PAGE 1569
ZONED "A1"



The entire 8" DIP
waterline from B12+20
to the 8x8 Tee at
B10+22 is restrained
with locking gaskets.

TAX #0660008700
PROPERTY OF
LARRY B. DRAPER
INSTRUMENT #201806360
WILL BOOK 110, PAGE 1751
DEED BOOK 1113, PAGE 3016
ZONED "A1"

OWNER TO INSTALL UE CONDUIT
FROM 5' FROM THE PLANT
BUILDING TO A STUBOUT AT
EACH WELL DISCONNECT.
CONTRACTOR TO PULL WIRE IN
OWNER-INSTALLED CONDUIT.

OWNER TO PROVIDE, INSTALL,
PRESSURE TEST AND
DISINFECT RAW WATERLINE
FROM 5' FROM THE BLOWOFF
MANHOLE TO THE METER
VAULT FOR EACH WELL.

Water Info. (From B12+20 to B10+05)

Pipe: 8" U.S. Pipe DIP, CL 350
6" U.S. Pipe DIP, CL 350
Valves: 8" AFC
6" AFC

From Treatment Plant to Blending Tank
Pipe: 4" U.S. Pipe DIP, CL 350
Valve: 4" AFC

Drawing Copyright © 2022

CHA

1341 Research Center Drive, Suite 2100
Blacksburg, VA 24060-5548
540.552.5548 • www.chacompanies.com

**WESTERN VIRGINIA
WATER AUTHORITY**

**WESTERN
VIRGINIA WATER
AUTHORITY**

COMMUNWEALTH OF VIRGINIA
ERIC T. ANDERSON
Lic. No. 040819
12/16/2022
PROFESSIONAL ENGINEER

IT IS A VIOLATION OF LAW FOR ANY PERSON, UNLESS THEY ARE
ACTING UNDER THE DIRECTION OF A LICENSED PROFESSIONAL
ENGINEER, ARCHITECT, LANDSCAPE ARCHITECT OR LAND
SURVEYOR TO ALTER AN ITEM IN ANY WAY. IF AN ITEM BEARING THE
STAMP OF A LICENSED PROFESSIONAL IS ALTERED, THE ALTERING
ENGINEER, ARCHITECT, LANDSCAPE ARCHITECT OR LAND
SURVEYOR SHALL STAMP THE DOCUMENT AND INCLUDE THE
NOTATION "ALTERED BY FOLLOWING BY THEIR SIGNATURE, THE
DATE OF SUCH ALTERATION, AND A BRIEF DESCRIPTION
OF THE ALTERATION."

**SOUTHLAKE WATER
SYSTEM**

CONTRACT 1: WATER
TREATMENT PLANT

CONTRACT 2: WATER MAIN

No.	Submittal / Revision	App'd. By	Date

Δ BID ISSUE ETA CDR 12/15/22

SITE UTILITY PLAN

Designed By: CDR	Drawn By: CDR	Checked By: ETA
Issue Date: 12/15/22	Project No: 073612	Scale: 1" = 30'

Drawing No.:
C-201

Southlake Water System
Contract 1 Plans 2.27.23