



BALZER & ASSOCIATES
PLANNERS / ARCHITECTS
ENGINEERS / SURVEYORS

Roanoke / Richmond
New River Valley / Staunton
Harrisonburg / Lynchburg

www.balzer.cc

1208 Corporate Circle
Roanoke, VA 24018
540.772.9580



SPRINGHILL SUITES BY MARRIOTT

8771 GANDER WAY
WWVA AS-BUILT PLAN

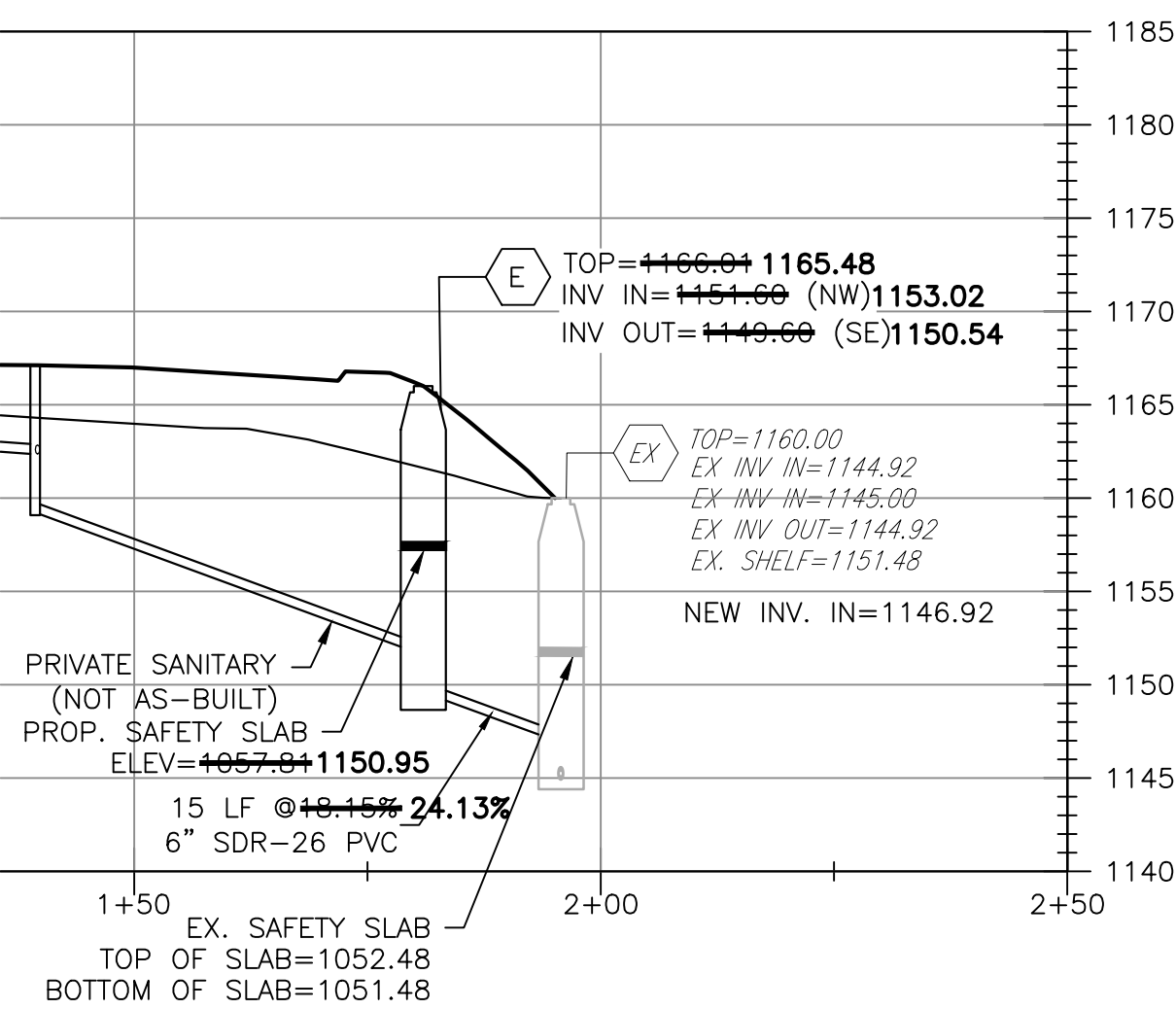
HOLLINS MAGISTERIAL DISTRICT
ROANOKE COUNTY, VIRGINIA

DRAWN BY EJP
DESIGNED BY BTC
CHECKED BY DSH
DATE 07/19/2023
SCALE 1" = 20'
REVISIONS

AS-BUILT
PROJECT NO. 04190043.00

SANITARY SEWER SCHEDULE:

- (D) (E) 41 LF OF 6" PVC SDR-35 AT 18.39%
(E) S.S. SAMPLING MH
TOP=1166.94+1165.48
INV. IN=1151.66 (NW)1153.02
INV. OUT=1149.66 (SE)1150.54
SAFETY SLAB ELEV=1150.95
(E) (EX) 15 LF OF 6" PVC SDR-26 AT 24.13%



AS-BUILT DRAWING NOTE:
AS-BUILT DRAWING FOR SANITARY SEWER AND WATERLINE IMPROVEMENTS IS FOR AS-BUILT PURPOSES ONLY. NO IMPROVEMENTS OTHER THAN SANITARY SEWER AND WATERLINE STRUCTURES WERE AS-BUILT OR INDICATED AS SUCH ON THE SUBJECT PLAN. UNDERGROUND PIPING WAS NOT LOCATED. LOCATION SHOWN IS APPROXIMATE BASED ON SURFACE FEATURES AND INFORMATION PROVIDED BY CONTRACTOR.

