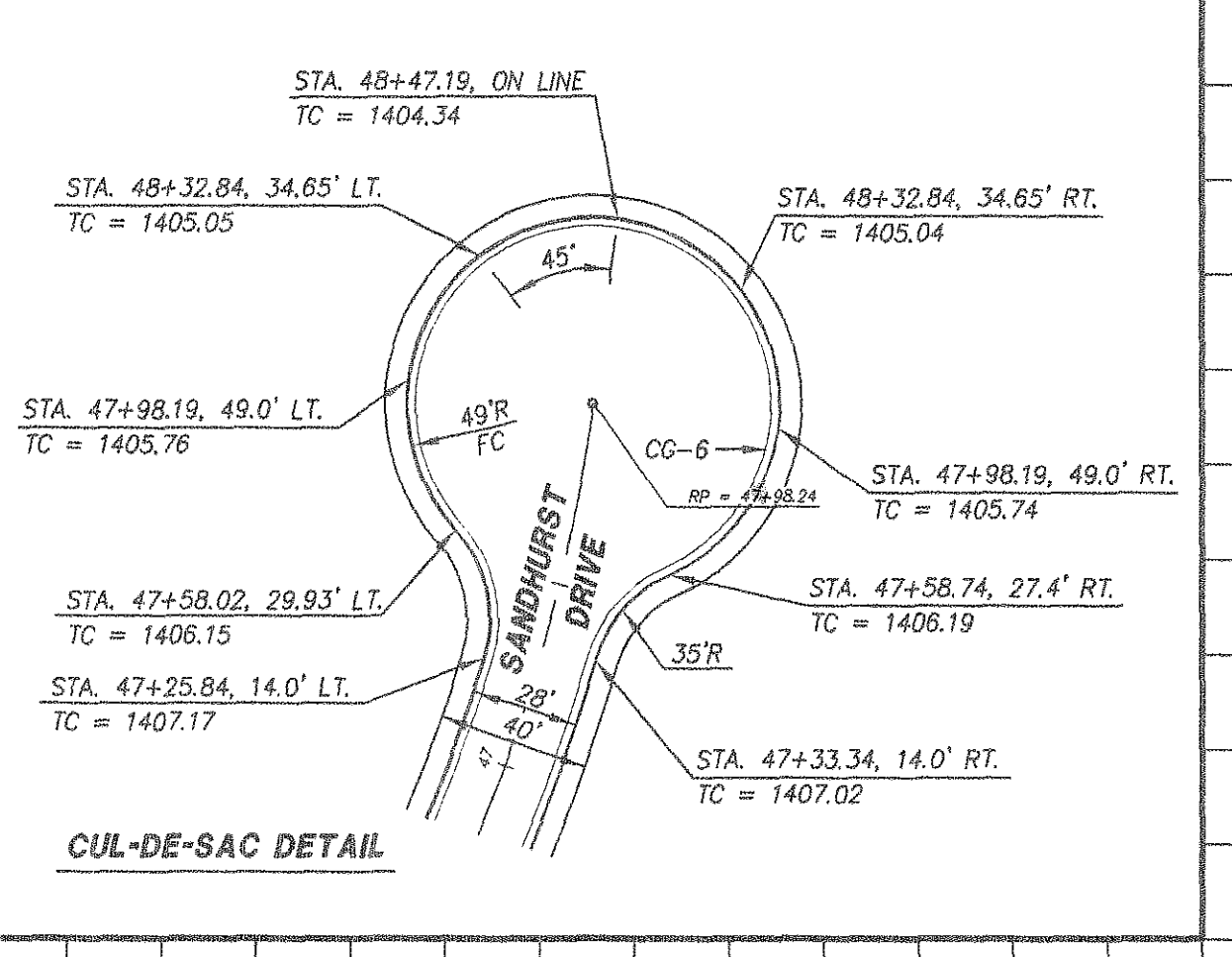
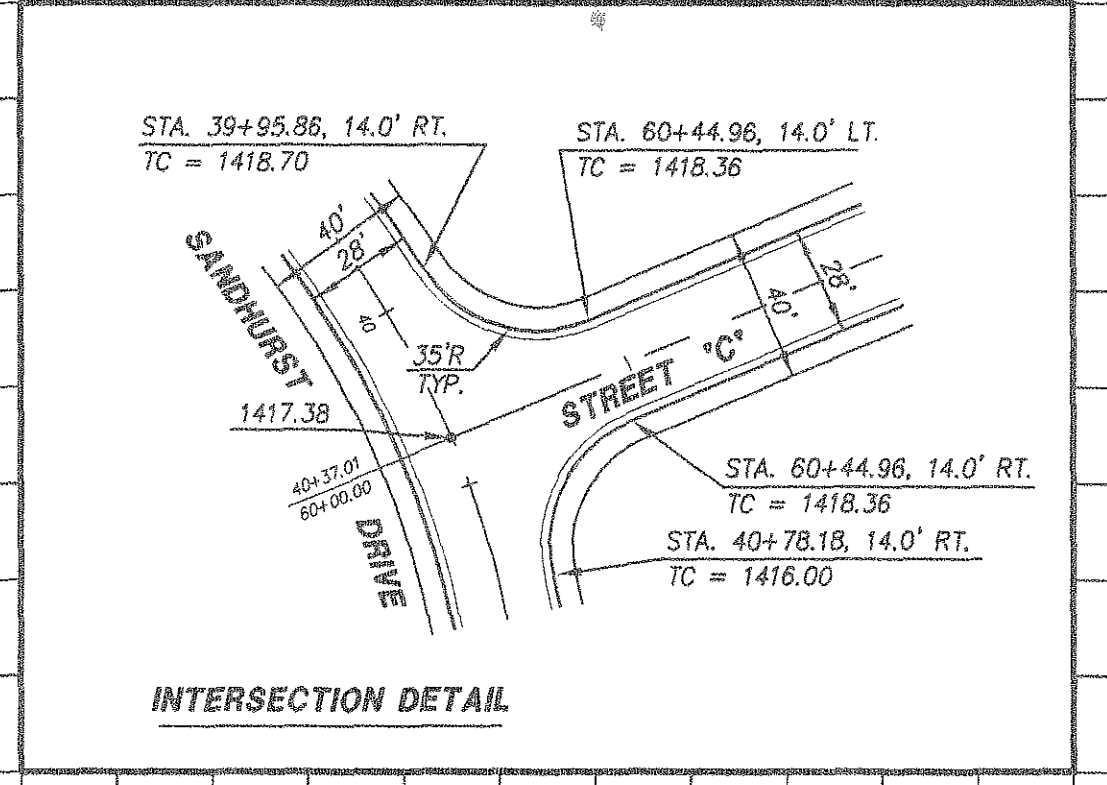


NOTES:

1. STUB-OUT AND PLUG 24 L.F. - 15" CONC. PIPE @ 2.50% FOR FUTURE EXTENSION OF STORM DRAIN SYSTEM. INVERT ELEVATION @ END OF STUB-OUT = 1410.15.
2. STUB-OUT AND PLUG 62 L.F. - 8" SANITARY SEWER PIPE @ 3.60% FOR FUTURE EXTENSION OF SANITARY SEWER SYSTEM. INVERT ELEVATION @ END OF STUB-OUT = 1411.63.



LUMSDEN ASSOCIATES, P.C.
ENGINEERS-SURVEYORS-PLANNERS
ROANOKE, VIRGINIA

4664 BRAMBLETTON AVENUE
P.O. BOX 30669
ROANOKE, VIRGINIA 24018
PHONE: (540) 774-4411
FAX: (540) 772-9445
E-MAIL: MAIL@LUMSDENPC.COM

COMMONWEALTH OF VIRGINIA
No. 033002
3/20/03
PROFESSIONAL ENGINEER

SECTION No. 1
STONE MANOR
PREPARED FOR
BOONE, BOONE & LOEB, INC.
WINDSOR HILLS MAGISTERIAL DISTRICT
ROANOKE COUNTY, VIRGINIA

NO.	DATE	DESCRIPTION
1		
2		
3		
4		
5		

DATE: 20 MARCH 2003
SCALE: AS SHOWN
COMMISSION NO.: 01-409
SHEET 7 OF 12