

NOTE: PLANS WERE PREPARED BASED ON:

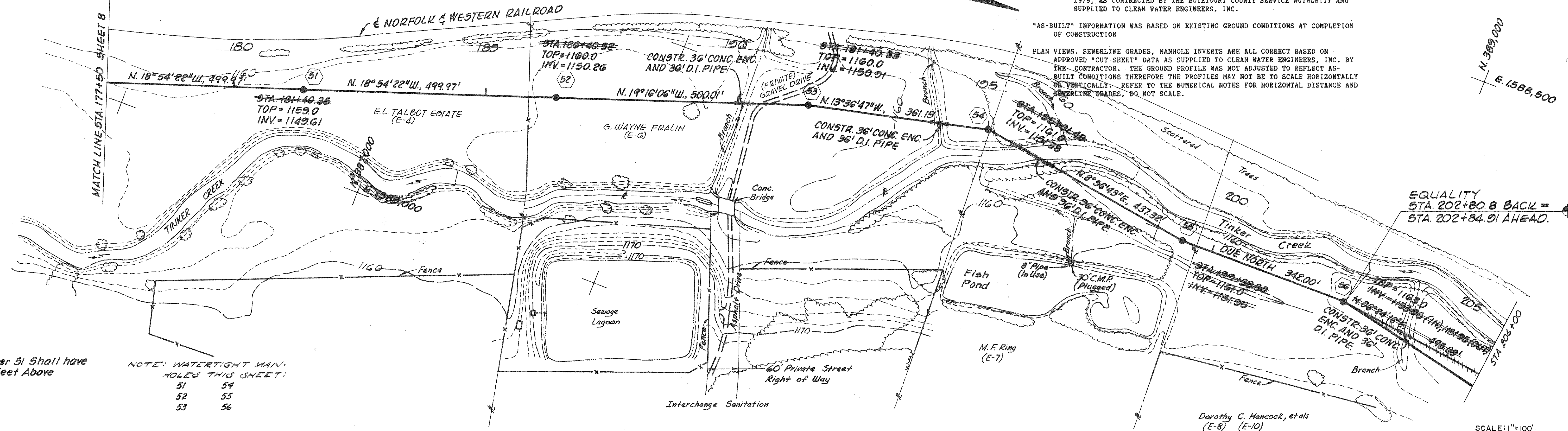
AERIAL TOPOGRAPHY MAPS PREPARED BY UNIVERSAL ENGINEERING, ROCKVILLE, MARYLAND FLOWN AND MAPPED 1979, AS CONTRACTED BY THE BOTETOURT COUNTY SERVICE AUTHORITY AND SUPPLIED TO CLEAN WATER ENGINEERS, INC.

HORIZONTAL AND VERTICAL GROUND CONTROL BY CHARLES R. McMURRAY, C.L.S., 1979, AS CONTRACTED BY THE BOTETOURT COUNTY SERVICE AUTHORITY AND SUPPLIED TO CLEAN WATER ENGINEERS, INC.

"AS-BUILT" INFORMATION WAS BASED ON EXISTING GROUND CONDITIONS AT COMPLETION OF CONSTRUCTION

PLAN VIEWS, SEWERLINE GRADES, MANHOLE INVERTS ARE ALL CORRECT BASED ON APPROVED "CUT-SHEET" DATA AS SUPPLIED TO CLEAN WATER ENGINEERS, INC. BY THE CONTRACTOR. THE GROUND PROFILE WAS NOT ADJUSTED TO REFLECT AS-BUILT CONDITIONS THEREFORE THE PROFILES MAY NOT BE TO SCALE HORIZONTALLY OR VERTICALLY. REFER TO THE NUMERICAL NOTES FOR HORIZONTAL DISTANCE AND SEWERLINE GRADES, DO NOT SCALE.

CONTRACT II

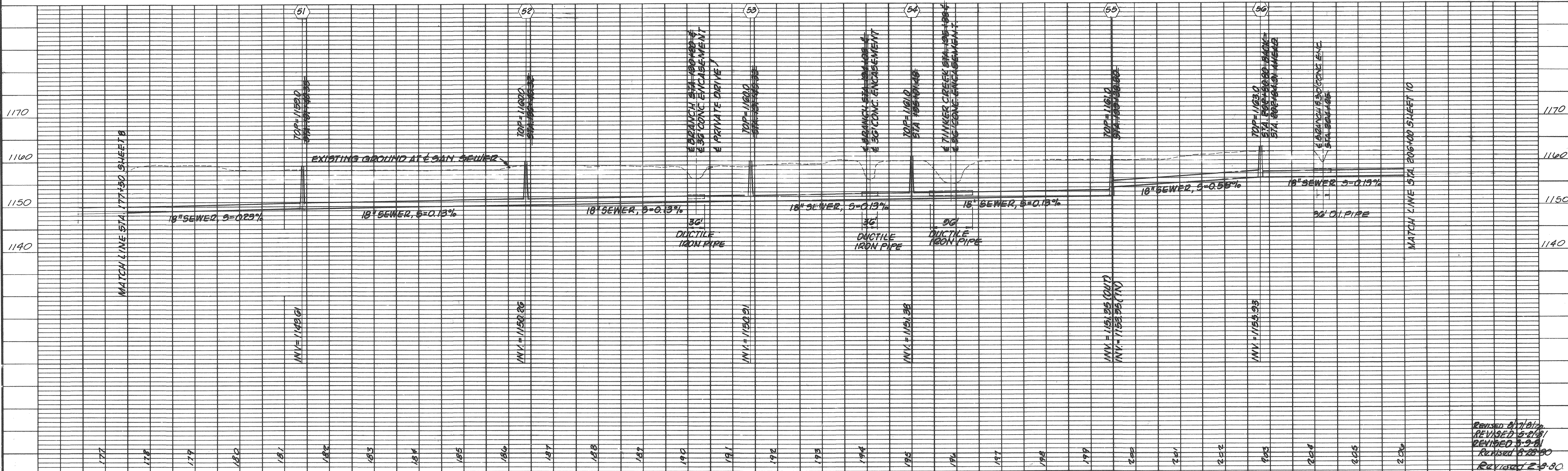


Note: Manhole Number 51 Shall have its Top Extended Two Feet Above Finished Grade.

NOTE: WATERTIGHT MANHOLES THIS SHEET:  
51 54  
52 55  
53 56

VENT ALL WATERTIGHT MANHOLES NOT SET IN PAVEMENT

SCALE: 1"=100'  
0' 50' 100' 200'



REVISION 8/1/80,  
REVISED 5/25/81,  
REVISED 3/2/81,  
REVISED 6/28/80,  
REVISED 2-9-80.

Designed: DJR-LHW  
Drafted: WCB-LHW  
Checked: LHW  
Approved: DJR

**Clean Water Engineers, Inc.**  
Fincastle, Virginia

TINKER CREEK INTERCEPTOR  
FOR  
BOTETOURT COUNTY SERVICE AUTHORITY

"AS BUILTS"

Daniel R. Rigg  
Professional Engineer

Sheet: 9 of 18  
Scale: HORIZ. 1"=100'  
VERT. 1"=10'  
Date: 9-28-79  
Project: 7930