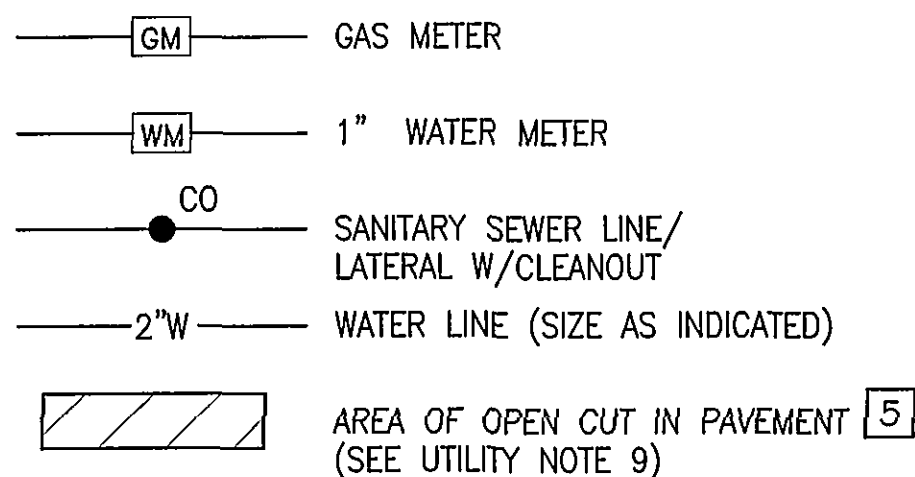


# UTILITY LEGEND:

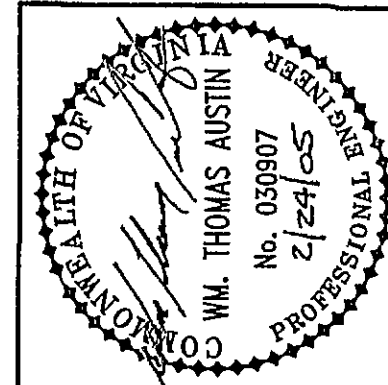
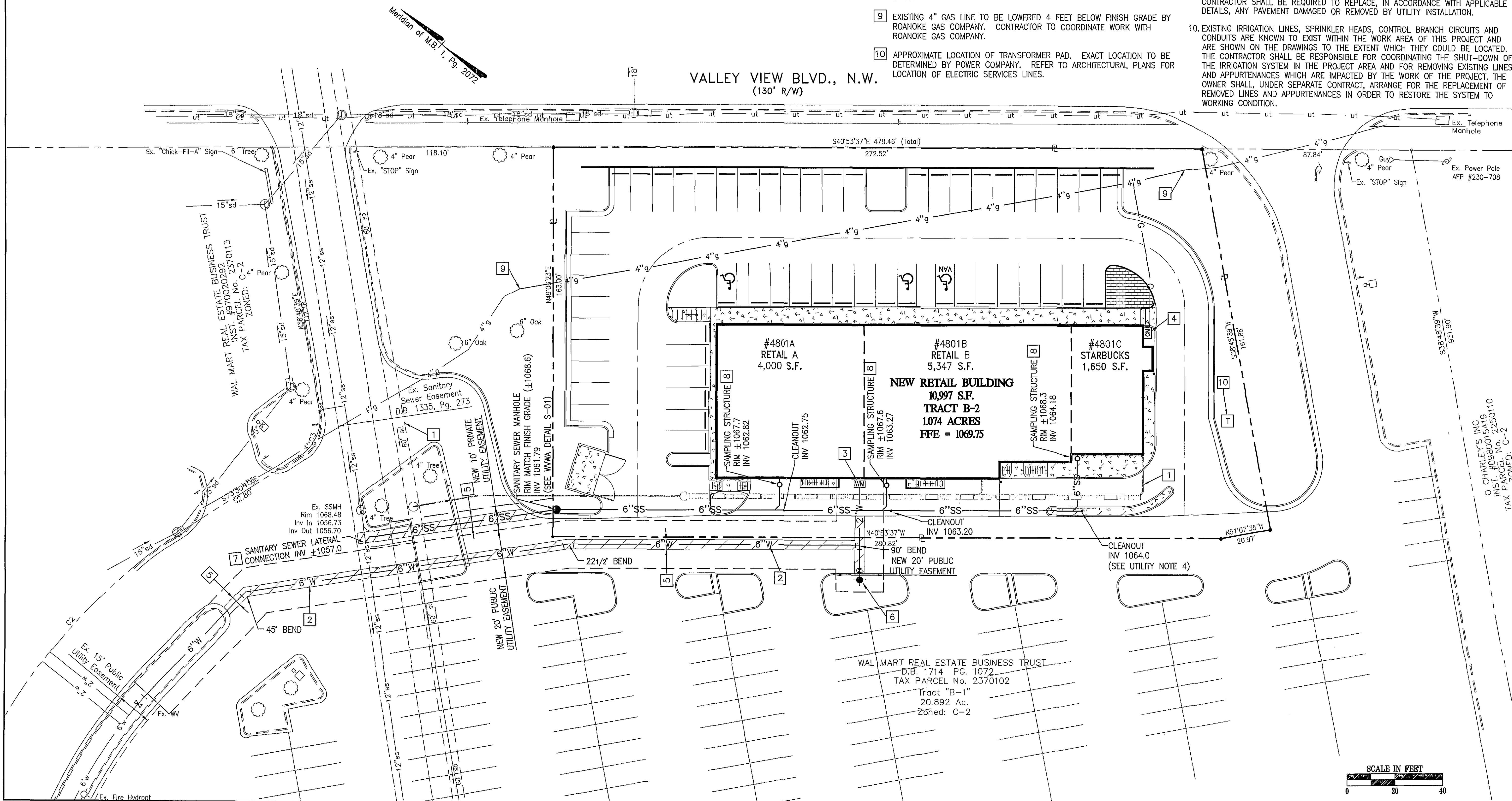


# KEYNOTES:

- STORM DRAIN SHOWN HEREON FOR INFORMATION ONLY.
- NEW PUBLIC 6" FIRE WATER MAIN. CONTRACTOR TO REMOVE EXISTING CAP AND EXTEND LINE IN ACCORDANCE WITH WESTERN VIRGINIA WATER AUTHORITY STANDARDS. MAIN EXTENSION TO END WITH 6" GATE VALVE AND FIRE HYDRANT ASSEMBLY.
- NEW 2" WATER SERVICE LINE. WESTERN VIRGINIA WATER AUTHORITY TO TAP MAIN AND PROVIDE AND INSTALL METER BOX, METER SETTING, 1" METER, AND DOUBLE DETECTOR CHECK VALVE. SITE CONTRACTOR TO EXTEND 1.5" DOMESTIC LINE FROM METER BOX TO BUILDING.
- GAS METER AND SERVICE LINE BY OTHERS. COORDINATE LOCATION WITH GAS COMPANY AND BUILDING PLANS.
- OPEN CUT IN PAVEMENT. SEE UTILITY TRENCH REPAIR IN PAVEMENT DETAILS (G-02) ON SHEET C-8.
- NEW PUBLIC FIRE HYDRANT AND ASSEMBLY. CONTRACTOR IS RESPONSIBLE FOR COORDINATING BURY DEPTH WITH OTHER UTILITIES.
- NEW SANITARY SEWER SERVICE CONNECTION. WESTERN VIRGINIA WATER AUTHORITY TO PERFORM TAP. CONTRACTOR TO EXTEND LATERAL AS SHOWN.
- SAMPLING STRUCTURE, TYPICAL OF THREE. SEE SHEET C-8 FOR DETAIL S-07.
- EXISTING 4" GAS LINE TO BE LOWERED 4 FEET BELOW FINISH GRADE BY ROANOKE GAS COMPANY. CONTRACTOR TO COORDINATE WORK WITH ROANOKE GAS COMPANY.
- APPROXIMATE LOCATION OF TRANSFORMER PAD. EXACT LOCATION TO BE DETERMINED BY POWER COMPANY. REFER TO ARCHITECTURAL PLANS FOR LOCATION OF ELECTRIC SERVICES LINES.

# UTILITY NOTES:

- CONTRACTOR TO CONFIRM LOCATION & INVERT PRIOR TO INSTALLATION OF NEW SERVICE LINES.
- CONTRACTOR TO CONTACT THE WESTERN VIRGINIA WATER AUTHORITY (853-5700) PRIOR TO EXTENDING WATER & SEWER SERVICE LINES AND TO COORDINATE THE CONNECTION TO THE EXISTING WATER AND SEWER MAINS.
- CONTRACTOR SHALL CONSULT WITH AMERICAN ELECTRIC POWER CO. TO DETERMINE SIZE AND EXACT LOCATION OF TRANSFORMER PAD.
- CLEAN-OUTS IN PAVEMENT OR SIDEWALK SHALL BE SET IN 6" DIAMETER CAST IRON VALVE BOX WITH TOP SET FLUSH WITH FINISHED PAVED GRADE.
- GAS SERVICE LINE IS SHOWN FOR GENERAL INFORMATION ONLY. EXACT LOCATION TO BE DETERMINED AND INSTALLED BY ROANOKE GAS COMPANY.
- SANITARY SEWER LATERALS SHALL BE INSTALLED AT 1.0% SLOPE (MIN.) FROM POINT OF CONNECTION TO BUILDING. CONTRACTOR TO CONFIRM INVERT OF EXISTING MAIN OR LATERAL PRIOR TO INSTALLATION OF LATERAL.
- REFER TO BUILDING PLANS FOR EXACT LOCATION OF UTILITY SERVICE CONNECTIONS.
- ALL WATER AND SEWER WORK SHALL CONFORM TO WESTERN VIRGINIA WATER AUTHORITY STANDARDS.
- AREA OF OPEN CUT SHOWN IS MINIMUM REQUIRED TO INSTALL UTILITY LINES. CONTRACTOR SHALL BE REQUIRED TO REPLACE, IN ACCORDANCE WITH APPLICABLE DETAILS, ANY PAVEMENT DAMAGED OR REMOVED BY UTILITY INSTALLATION.
- EXISTING IRRIGATION LINES, SPRINKLER HEADS, CONTROL BRANCH CIRCUITS AND CONDUITS ARE KNOWN TO EXIST WITHIN THE WORK AREA OF THIS PROJECT AND ARE SHOWN ON THE DRAWINGS TO THE EXTENT WHICH THEY COULD BE LOCATED. THE CONTRACTOR SHALL BE RESPONSIBLE FOR COORDINATING THE SHUT-DOWN OF THE IRRIGATION SYSTEM IN THE PROJECT AREA AND FOR REMOVING EXISTING LINES AND APPURTENANCES WHICH ARE IMPACTED BY THE WORK OF THE PROJECT. THE OWNER SHALL, UNDER SEPARATE CONTRACT, ARRANGE FOR THE REPLACEMENT OF REMOVED LINES AND APPURTENANCES IN ORDER TO RESTORE THE SYSTEM TO WORKING CONDITION.



Revisions	Issue Date:	Issue Date:	Issue Date:
1	REVISIONS PER CITY OF ROANOKE COMMENTS	2/25/05	
2	REVISIONS PER CITY OF ROANOKE COMMENTS	3/23/05	

Issue Date:	Drawn By:	Designed By:	Checked By:
DECEMBER 29, 2004	CZY	CZY	WTA

**Mattem & Craig**  
CONSULTING ENGINEERS • SURVEYORS  
701 FIRST STREET, SW  
ROANOKE, VIRGINIA 24016  
(540) 345-9342  
FAX (540) 345-7891

SITE DEVELOPMENT PLANS  
FRONTIER 0407 VALLEY VIEW, LLC  
**UTILITY PLAN**  
CITY OF ROANOKE, VIRGINIA

Vertical Scale:  
N/A

Horizontal Scale:  
1" = 20'

Commission Number:  
2343

Sheet No.:  
**C-5**

ID# 642-4X5