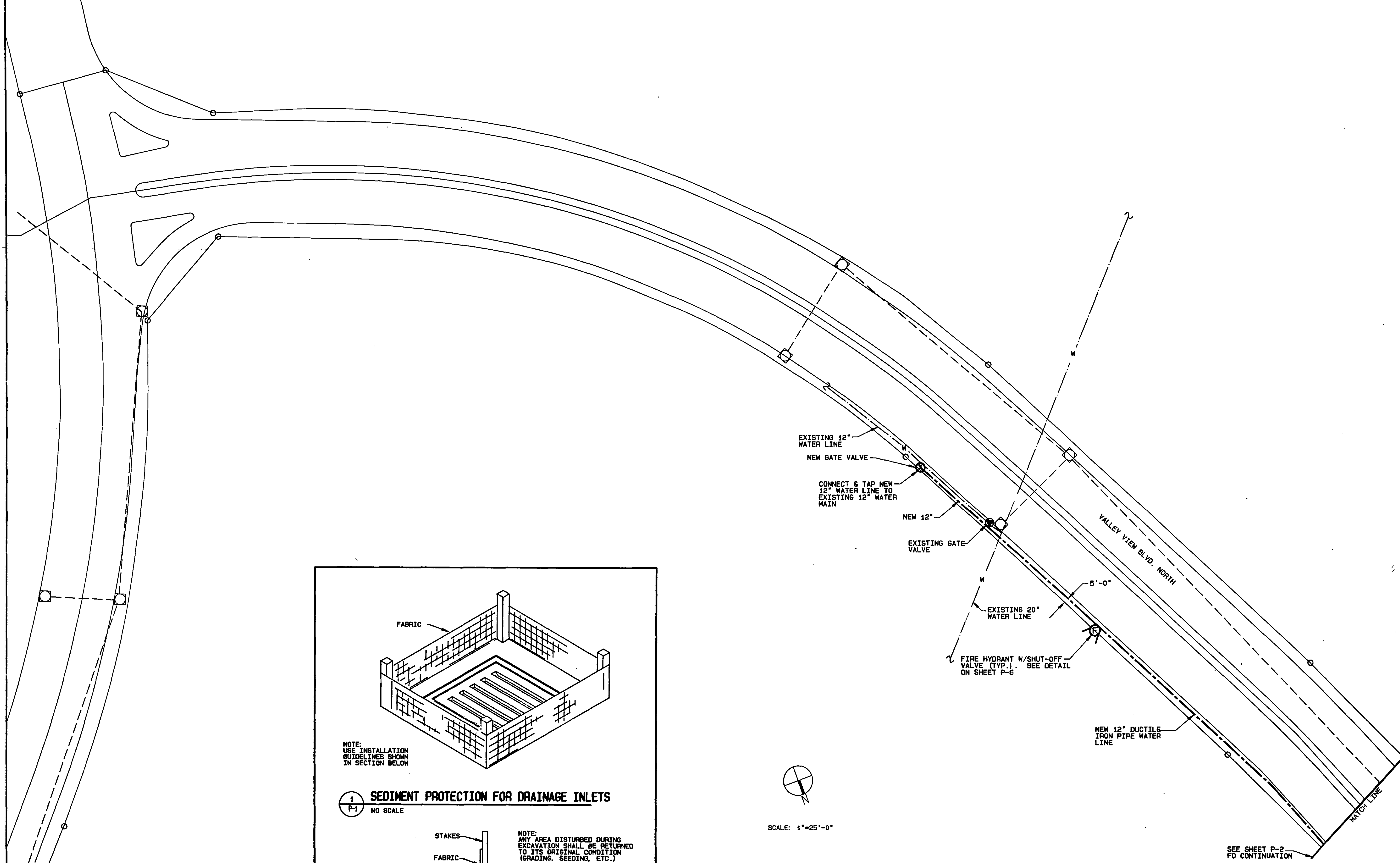


**SANITARY SEWER AND WATER MAIN
 EXTENSIONS PLAN
 VALLEY VIEW SUB-DIVISION**



FABRIC

NOTE:
 USE INSTALLATION
 GUIDELINES SHOWN
 IN SECTION BELOW

1 SEDIMENT PROTECTION FOR DRAINAGE INLETS
 P-1 NO SCALE

STAKES

FABRIC

RUNOFF WATER WITH SEDIMENT

BURIED FABRIC

NOTE:
 ANY AREA DISTURBED DURING
 EXCAVATION SHALL BE RETURNED
 TO ITS ORIGINAL CONDITION
 (GRADING, SEEDING, ETC.)

2 SILK SCREEN FOR R/W SIDE OF EXCAVATION
 P-1 NO SCALE

PRECONSTRUCTION:
 SANITARY AND WATER LINES SHALL BE STAKED
 PRIOR TO ANY EXCAVATION IN ORDER THAT
 AFFECTED TREES CAN BE RELOCATED OR SANITARY
 AND WATER LINES BE REPOSITIONED.
 SANITARY AND WATER LINES SHOULD BE LOCATED
 AT LEAST 7'-6" FROM PROPERTY LINES.
 IF THIS IS NOT POSSIBLE AN ADDITIONAL
 EASEMENT WILL BE REQUIRED.

APPROVED:

Edward R. Tucker 11/6/86
 AGENT FOR ROANOKE CITY PLANNING COMMISSION DATE

Charles M. Huffine 11/6/86
 CITY ENGINEER, CITY OF ROANOKE VIRGINIA DATE

Revisions	Project Number
	348.01
Date	08/03/86
Drawn By	CAD
Checked By	ECJ
Approved By	ECJ