

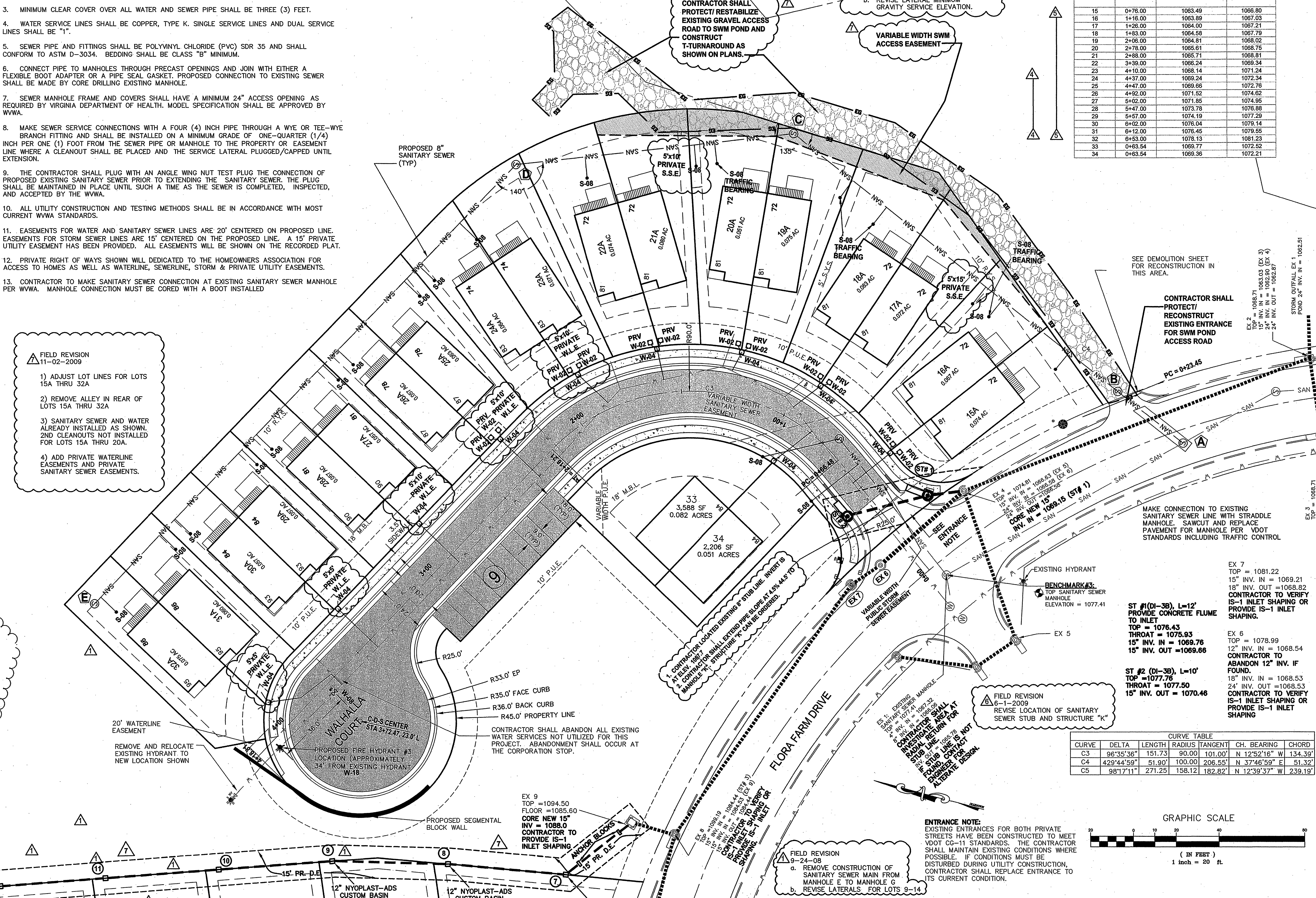
# UTILITY NOTES

- ALL CONNECTIONS TO EXISTING WATER MAINS SHALL BE COORDINATED WITH THE WESTERN VIRGINIA WATER AUTHORITY (WVWA). CONTRACTOR TO FURNISH AND INSTALL TAPPING SLEEVE AND VALVE. TAP TO BE MADE BY WVWA.
- WATER SERVICE LINES SHALL COMPLY WITH AWWA C800 LATEST EDITION.
- MINIMUM CLEAR COVER OVER ALL WATER AND SEWER PIPE SHALL BE THREE (3) FEET.
- WATER SERVICE LINES SHALL BE COPPER, TYPE K. SINGLE SERVICE LINES AND DUAL SERVICE LINES SHALL BE "1".
- SEWER PIPE AND FITTINGS SHALL BE POLYVINYL CHLORIDE (PVC) SDR 35 AND SHALL CONFORM TO ASTM D-3034. BEDDING SHALL BE CLASS "B" MINIMUM.
- CONNECT PIPE TO MANHOLES THROUGH PRECAST OPENINGS AND JOIN WITH EITHER A FLEXIBLE BOOT ADAPTER OR A PIPE SEAL GASKET. PROPOSED CONNECTION TO EXISTING SEWER SHALL BE MADE BY CORE DRILLING EXISTING MANHOLE.
- SEWER MANHOLE FRAME AND COVERS SHALL HAVE A MINIMUM 24" ACCESS OPENING AS REQUIRED BY VIRGINIA DEPARTMENT OF HEALTH. MODEL SPECIFICATION SHALL BE APPROVED BY WVWA.
- MAKE SEWER SERVICE CONNECTIONS WITH A FOUR (4) INCH PIPE THROUGH A WYE OR TEE-WYE BRANCH FITTING AND SHALL BE INSTALLED ON A MINIMUM GRADE OF ONE-QUARTER (1/4) INCH PER ONE (1) FOOT FROM THE SEWER PIPE OR MANHOLE TO THE PROPERTY OR EASEMENT LINE WHERE A CLEANOUT SHALL BE PLACED AND THE SERVICE LATERAL PLUGGED/CAPPED UNTIL EXTENSION.
- THE CONTRACTOR SHALL PLUG WITH AN ANGLE WING NUT TEST PLUG THE CONNECTION OF PROPOSED EXISTING SANITARY SEWER PRIOR TO EXTENDING THE SANITARY SEWER. THE PLUG SHALL BE MAINTAINED IN PLACE UNTIL SUCH A TIME AS THE SEWER IS COMPLETED, INSPECTED, AND ACCEPTED BY THE WVWA.
- ALL UTILITY CONSTRUCTION AND TESTING METHODS SHALL BE IN ACCORDANCE WITH MOST CURRENT WVWA STANDARDS.
- EASEMENTS FOR WATER AND SANITARY SEWER LINES ARE 20' CENTERED ON PROPOSED LINE. EASEMENTS FOR STORM SEWER LINES ARE 15' CENTERED ON THE PROPOSED LINE. A 15' PRIVATE UTILITY EASEMENT HAS BEEN PROVIDED. ALL EASEMENTS WILL BE SHOWN ON THE RECORDED PLAT.
- PRIVATE RIGHT OF WAYS SHOWN WILL BE DEDICATED TO THE HOMEOWNERS ASSOCIATION FOR ACCESS TO HOMES AS WELL AS WATERLINE, SEWERLINE, STORM & PRIVATE UTILITY EASEMENTS.
- CONTRACTOR TO MAKE SANITARY SEWER CONNECTION AT EXISTING SANITARY SEWER MANHOLE PER WVWA. MANHOLE CONNECTION MUST BE CORED WITH A BOOT INSTALLED

## SANITARY SEWER MINIMUM FLOOR ELEVATION

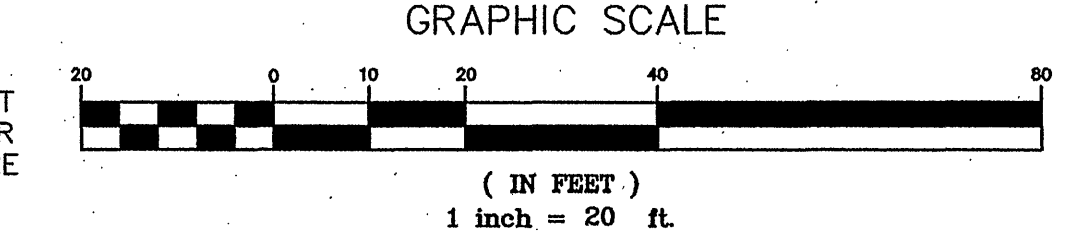
LOT NUMBER	STATION	CO INVERT ELEVATION	MIN FLOOR ELEV
15	0+76.00	1063.49	1066.80
16	1+16.00	1063.89	1067.03
17	1+26.00	1064.00	1067.21
18	1+33.00	1064.58	1067.79
19	2+06.00	1064.81	1068.02
20	2+78.00	1065.61	1068.75
21	2+88.00	1065.71	1068.81
22	3+39.00	1066.24	1069.34
23	4+10.00	1068.14	1071.24
24	4+37.00	1069.24	1072.34
25	4+47.00	1069.66	1072.76
26	4+92.00	1071.52	1074.62
27	5+02.00	1071.85	1074.95
28	5+47.00	1073.78	1076.88
29	5+57.00	1074.19	1077.29
30	6+02.00	1076.04	1079.14
31	6+12.00	1076.45	1079.55
32	6+53.00	1078.13	1081.23
33	0+63.54	1069.77	1072.52
34	0+63.54	1069.36	1072.21

- FIELD REVISION 11-02-2009
- ADJUST LOT LINES FOR LOTS 15A THRU 32A
  - REMOVE ALLEY IN REAR OF LOTS 15A THRU 32A
  - SANITARY SEWER AND WATER ALREADY INSTALLED AS SHOWN. 2ND CLEANOUTS NOT INSTALLED FOR LOTS 15A THRU 20A.
  - ADD PRIVATE WATERLINE EASEMENTS AND PRIVATE SANITARY SEWER EASEMENTS.



CURVE TABLE

CURVE	DELTA	LENGTH	RADIUS	TANGENT	CH. BEARING	CHORD
C3	96°35'36"	151.73	90.00	101.00'	N 12°52'16" W	134.39'
C4	42°44'59"	51.90	100.00	206.55'	N 37°46'59" E	51.32'
C5	98°17'11"	271.25	158.12	182.82'	N 12°39'37" W	239.19'



**parker**  
DESIGN GROUP  
ENGINEERS • SURVEYORS • PLANNERS • ARCHITECTS

816 Boulevard  
Salem, Virginia 24153  
Phone: 540-387-1153  
Fax: 540-389-5767  
www.parkerdg.com

PAUL J. BROWN  
Lic. No. 036148  
11-25-2009  
PROFESSIONAL ENGINEER

**Comprehensive Site Plan for  
The Village at Tinker Creek-Phase II**  
Prepared for Star City Developers  
Hollins Magisterial District  
Roanoke County, Virginia

**REVISIONS:**  
Revisions per Roanoke County comments  
Revisions per Roanoke County comments  
Revisions per Roanoke County comments  
Field revision per owner  
Field Revision addressing Sanitary Sewer  
Field Revision addressing Sanitary Sewer  
Field Revision addressing Sanitary Sewer  
Field Revision #7 11-02-2009

**DESIGNED BY:** SRB  
**DRAWN BY:** AAS  
**CHECKED BY:** SRB  
**SCALE:** 1" = 20'  
**DATE:** July 20, 2007

**SHEET TITLE:**  
Dimensional &  
Utility Plan  
Walhalla Court

**C07**  
7 OF 16  
PROJECT NUMBER:  
06-0402-04

S:\2006 Projects\06-0402 Village @ Tinker Creek\dwg\06-0402-13 SITE PLAN FIELD REVISION.dwg, C07-ROAD F SITE-UTILITY PLAN, 11/25/2009 2:05:28 PM, \\OCESERVER\Oce\TDS20, Oce D+ 24036 In, 1:1