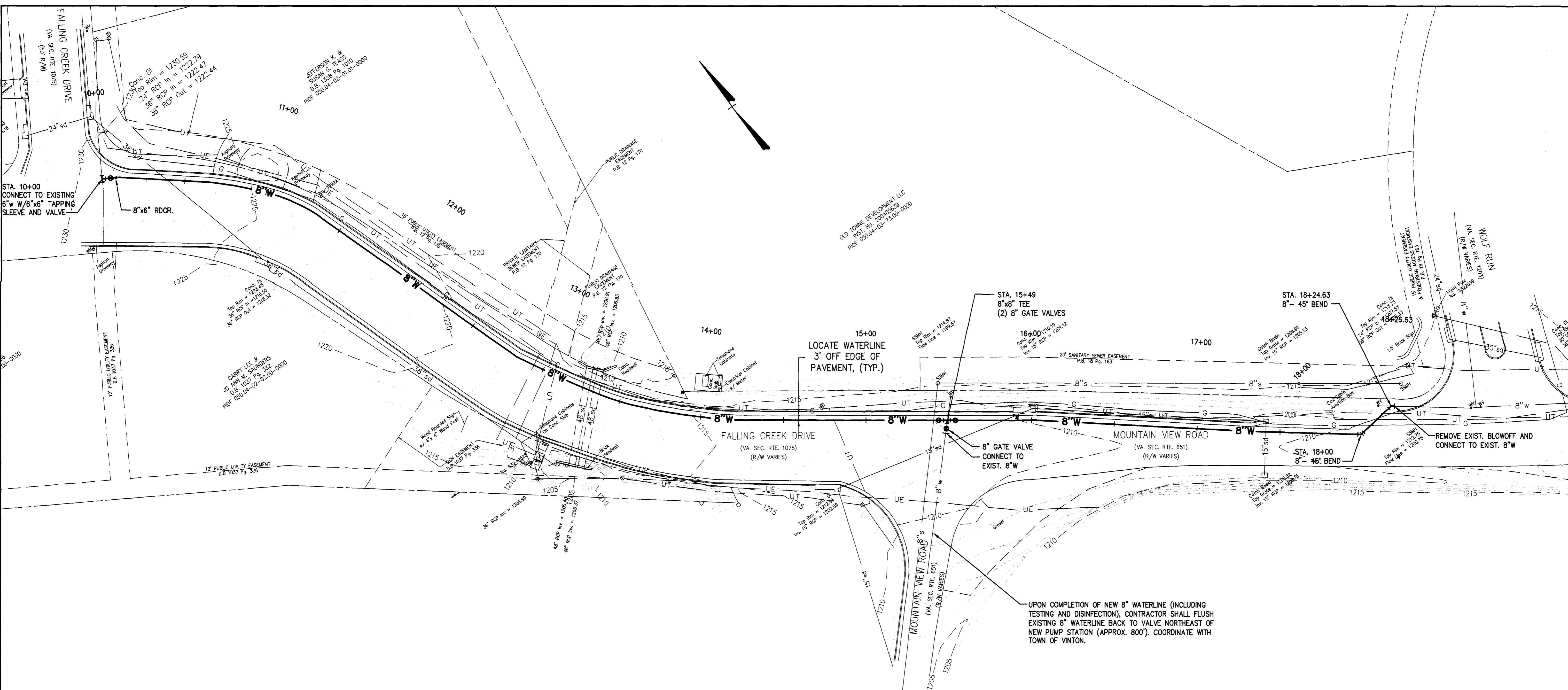


Date	
Revisions	

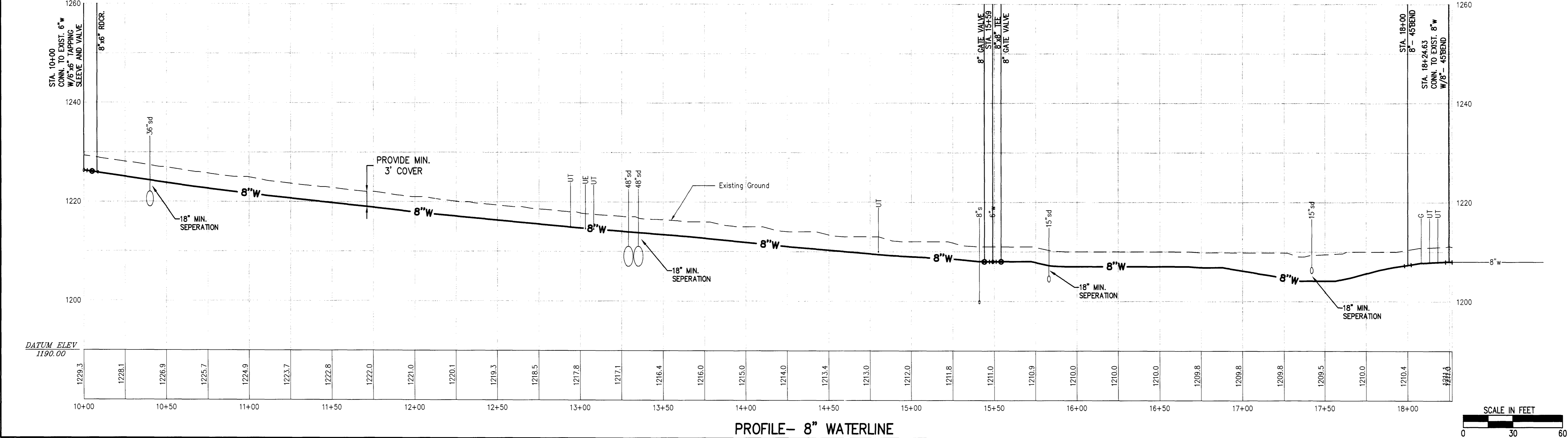
Issue Date:	FEBRUARY, 2008
Drawn By:	BYR/B
Designed By:	BM/BCC
Checked By:	B/C/BCC
Date:	2/28/08

Mattem & Craig
CONSULTING ENGINEERS • SURVEYORS

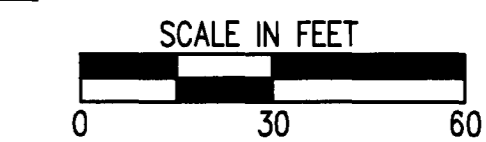
701 FIRST STREET, S.W.
ROANOKE, VIRGINIA 24016
(404) 446-5021
(404) 346-1891



UPON COMPLETION OF NEW 8" WATERLINE (INCLUDING TESTING AND DISINFECTION), CONTRACTOR SHALL FLUSH EXISTING 8" WATERLINE BACK TO VALVE NORTHEAST OF NEW PUMP STATION (APPROX. 800'). COORDINATE WITH TOWN OF VINTON.



PROFILE- 8" WATERLINE



FALLING CREEK WATER PROJECT-PHASE II

PLAN AND PROFILE-- 8" WATERLINE

TOWN OF VINTON, VIRGINIA

Vertical Scale:	1" = 10'
Horizontal Scale:	1" = 30'
Commission Number:	1955-K

Sheet No.: **C-7**