

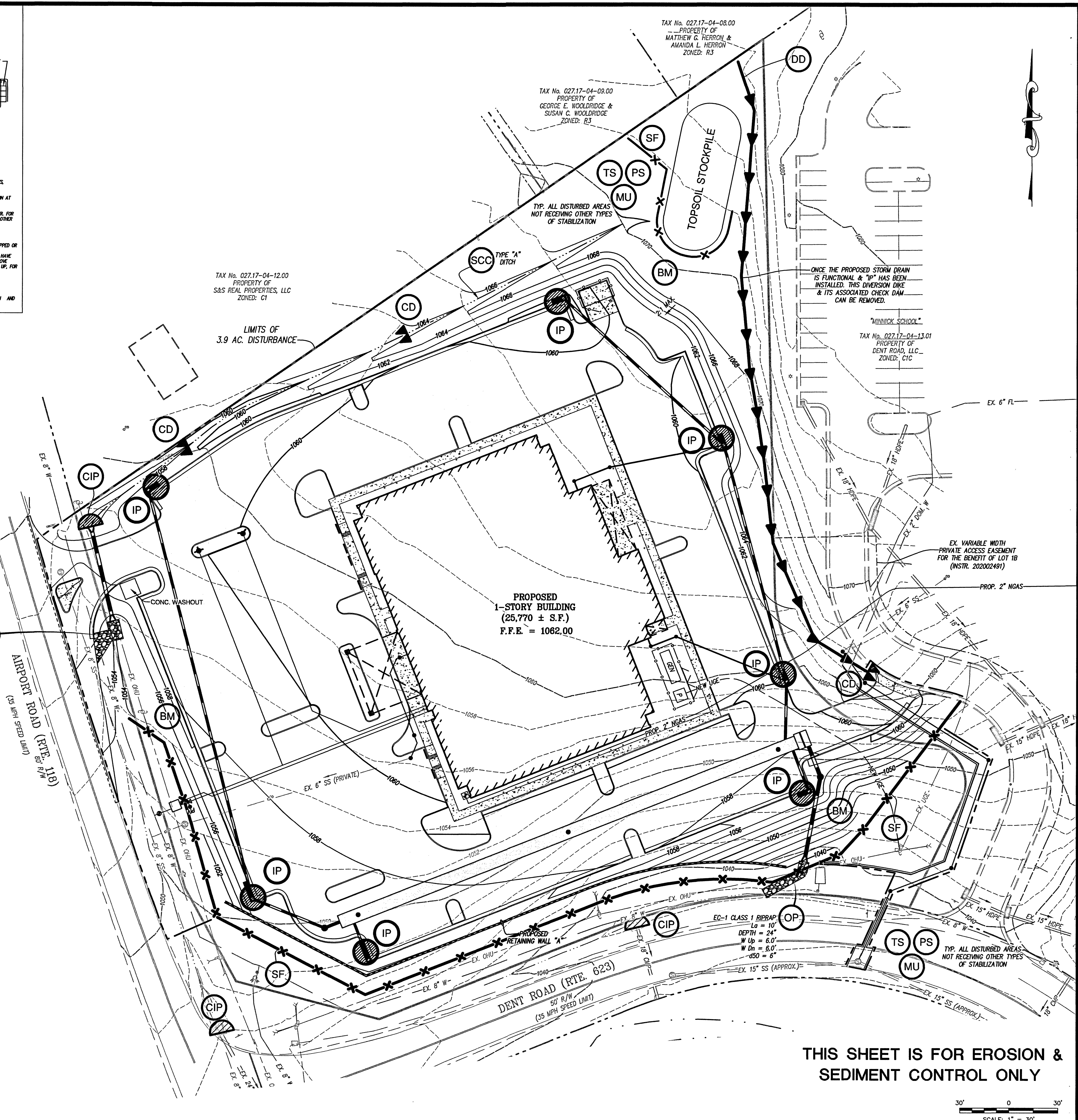
PHASE II - SEQUENCE OF CONSTRUCTION

1. INSTALL WATER LINES, SANITARY SEWER LINES, AND CURB & GUTTER. INSTALL INLET PROTECTIONS IMMEDIATELY UPON INLET ACCEPTING SURFACE FLOWS. STORM DRAIN SYSTEM AND UNDERGROUND DETENTION FACILITY CAN NOW BE PLACED ONLINE.
2. INSTALL ASPHALT PAVEMENT.
3. ONCE AREAS ARE AT FINAL GRADE APPLY SEEDING PER VAESC SPECIFICATIONS.
4. TEMPORARY EROSION AND SEDIMENT CONTROL MEASURES SHALL BE REMOVED ONLY AFTER THOSE AFFECTED AREAS HAVE BEEN BROUGHT TO FINAL GRADE AND PERMANENTLY STABILIZED WITH ESTABLISHED VEGETATION AND INSPECTED AND APPROVED BY ROANOKE COUNTY.

*THIS SEQUENCE IS PROVIDED AS A GENERAL OUTLINE AND NOT TO DETAIL EVERY TASK THAT MUST BE PERFORMED FOR THE CONSTRUCTION OF THE PROJECT. CONTRACTOR MAY ELECT TO ALTER THE SEQUENCE OF CONSTRUCTION. HOWEVER, THE CONTRACTOR MUST FOLLOW THE VIRGINIA EROSION AND SEDIMENT CONTROL HANDBOOK, AND ROANOKE COUNTY REGULATIONS. THIS SEQUENCE IS NOT INTENDED TO BE A STRICTLY STEP BY STEP PROGRESSION OF WORK ITEMS. SOME OF THE ABOVE ITEMS CAN BE ACCOMPLISHED CONCURRENTLY.

PHASE II / TOTAL DISTURBED AREA = 3.9 ACRES

NO.	TITLE	KEY	SYMBOL
3.02	TEMPORARY GRAVEL CONSTRUCTION ENTRANCE	(CE)	—
3.05	SILT FENCE	(SF)	— * — * —
3.07	INLET PROTECTION	(IP)	●
3.08	CULVERT INLET PROTECTION	(CIP)	●
3.09	TEMPORARY DIVERSION DIKE	(DD)	— = —
3.11	TEMPORARY R/W DIVERSION	(RWD)	— = —
3.13	TEMPORARY SEDIMENT TRAP	(ST)	—
3.18	OUTLET PROTECTION	(OP)	●
3.20	ROCK CHECK DAM	(CD)	▲ ▲
3.31	TEMPORARY SEEDING	(TS)	— ○ —
3.32	PERMANENT SEEDING	(PS)	— ○ —
3.35	MULCHING	(MU)	— ○ —
3.36	SOIL STABILIZATION BLANKETS AND MATTING	(BM)	—



THIS SHEET IS FOR EROSION & SEDIMENT CONTROL ONLY

SCALE: 1" = 30'

Lumsden Associates, P.C.
ENGINEERS | SURVEYORS | PLANNERS

4664 BRAMBLETON AVENUE
P.O. BOX 20669
ROANOKE, VIRGINIA 24018

PHONE: (540) 774-4411
FAX: (540) 772-9445
WWW.LUMSDENPC.COM

COMMONWEALTH OF VIRGINIA
ANDREW P. LUMSDEN
Lic. No. 052216
4/9/21
PROFESSIONAL ENGINEER

**PHASE II
EROSION & SEDIMENT
CONTROL PLAN**

**SITE DEVELOPMENT PLAN
PREPARED FOR
VISTAR EYE CENTER
PREPARED FOR
RETINA LAND 1, LLC
LOCATED AT THE INTERSECTION OF
AIRPORT ROAD & DENT ROAD
ROANOKE COUNTY, VIRGINIA**

NO.	DATE	DESCRIPTION
1		
2		
3		
4		
5		

DATE: April 9, 2021
SCALE: 1" = 30'
COMMISSION NO: 2020-297
SHEET 10 OF 14