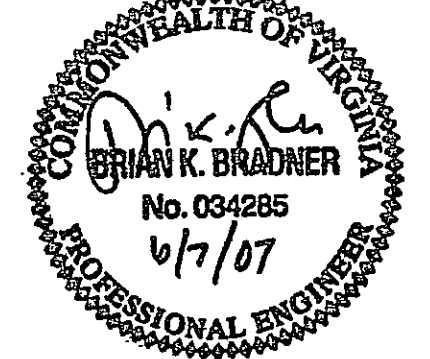


**SANITARY SEWER
RELOCATION**

**WAL-MART
STORE NO. 3243-02**
4824 CHALLENGER AVENUE
ROANOKE, VIRGINIA 24012

SEAL



KEY PLAN

SCALE

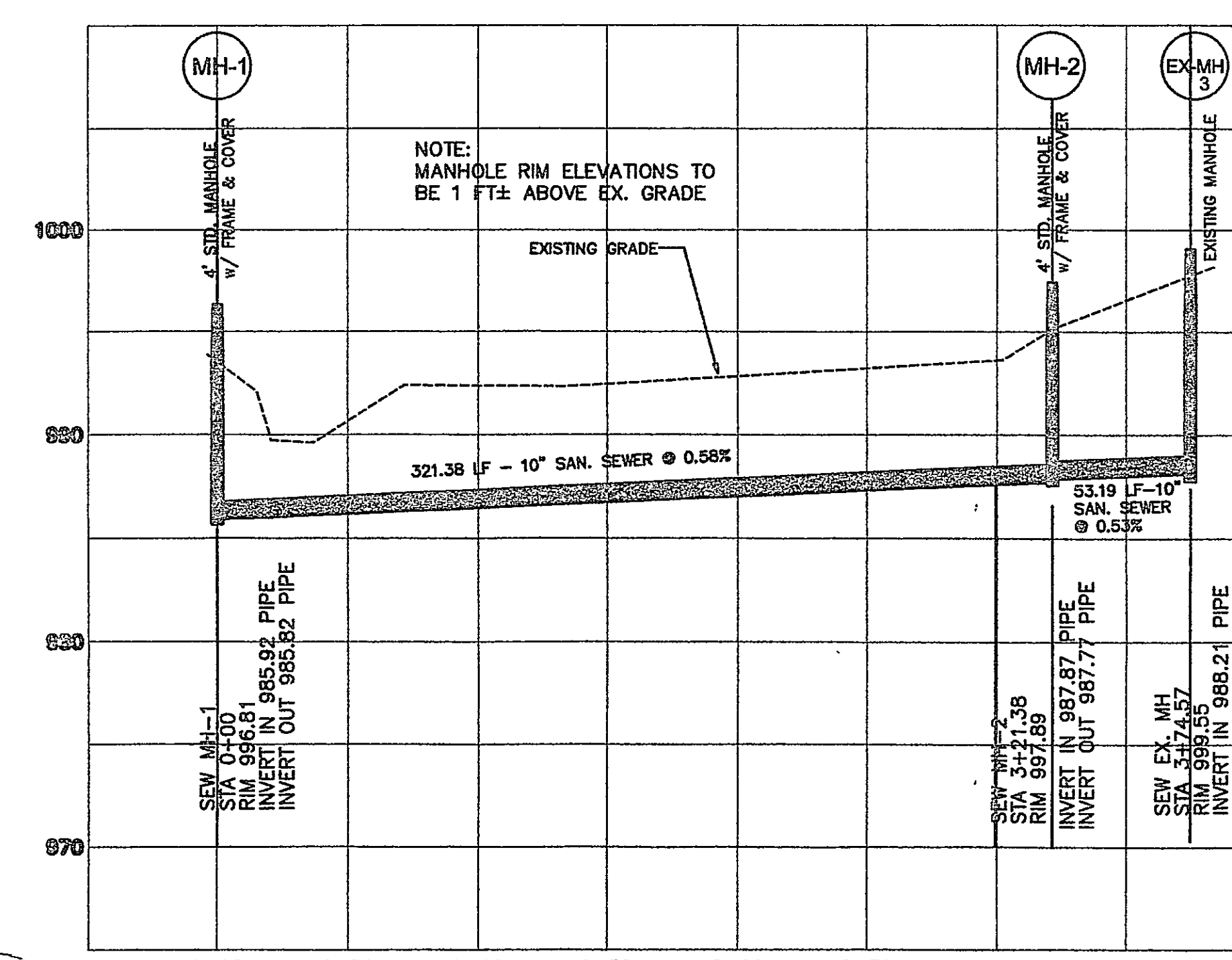
No.	DATE	BY	Description

REVISIONS

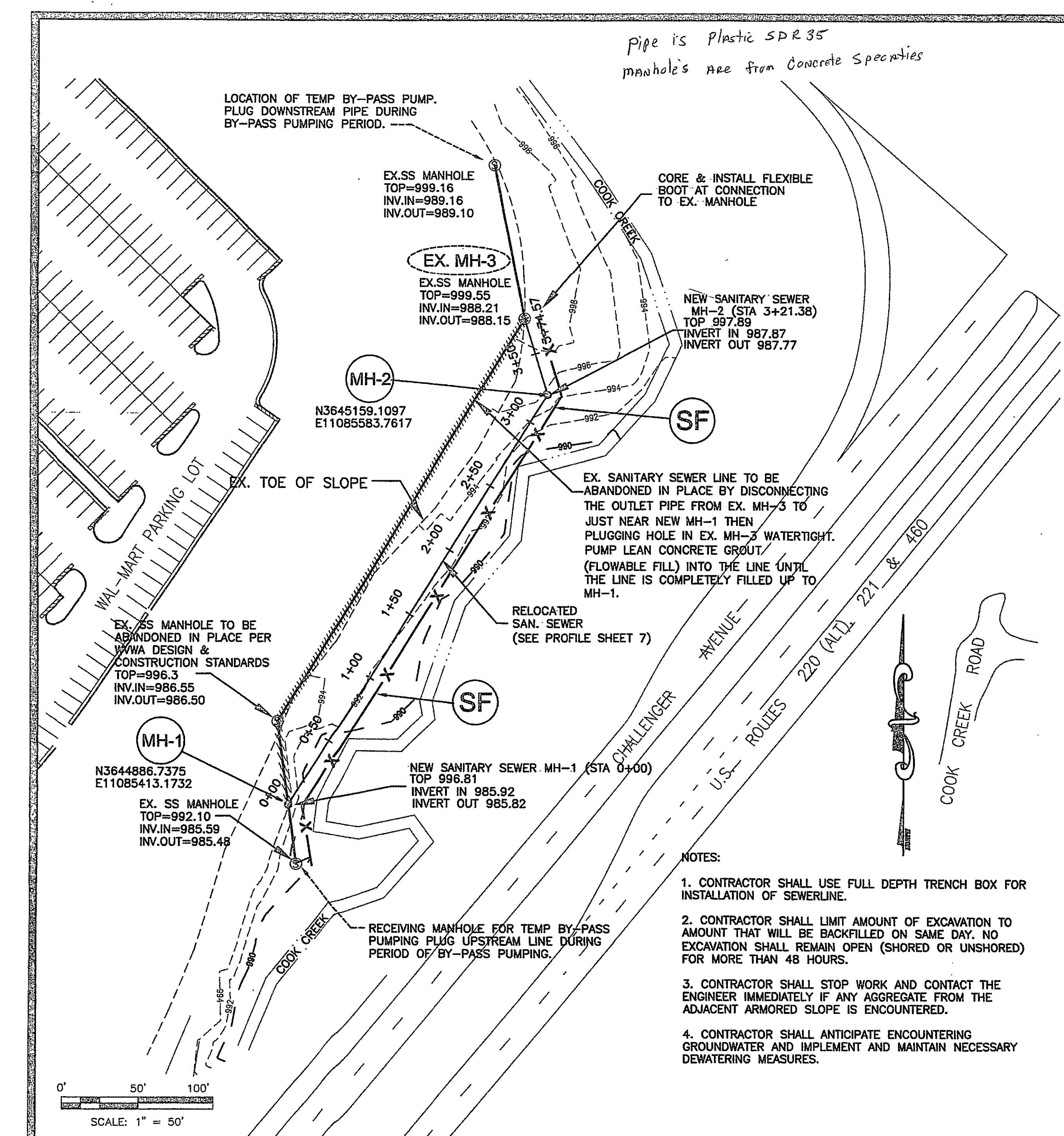
DRAWN BY BSP
APPROVED BY BKB
CHECKED BY JLK
DATE JUNE 6, 2007

**SITE PLAN,
GENERAL NOTES,
& PROFILE**

PROJECT NO. 80109900



SCALE: HORIZ. 1"=50'
VERT. 1"=5'



pipe is plastic SDR 35
manhole's are from concrete specialties

EX. SANITARY SEWER LINE TO BE ABANDONED IN PLACE BY DISCONNECTING THE OUTLET PIPE FROM EX. MH-3 TO JUST NEAR NEW MH-1 THEN PLUGGING HOLE IN EX. MH-3 WATERTIGHT. PUMP LEAN CONCRETE GROUT (FLOWABLE FILL) INTO THE LINE UNTIL THE LINE IS COMPLETELY FILLED UP TO MH-1.

- NOTES:
- CONTRACTOR SHALL USE FULL DEPTH TRENCH BOX FOR INSTALLATION OF SEWERLINE.
 - CONTRACTOR SHALL LIMIT AMOUNT OF EXCAVATION TO AMOUNT THAT WILL BE BACKFILLED ON SAME DAY. NO EXCAVATION SHALL REMAIN OPEN (SHORED OR UNSHORED) FOR MORE THAN 48 HOURS.
 - CONTRACTOR SHALL STOP WORK AND CONTACT THE ENGINEER IMMEDIATELY IF ANY AGGREGATE FROM THE ADJACENT ARMORED SLOPE IS ENCOUNTERED.
 - CONTRACTOR SHALL ANTICIPATE ENCOUNTERING GROUNDWATER AND IMPLEMENT AND MAINTAIN NECESSARY DEWATERING MEASURES.

BY-PASS PUMPING

- CONTRACTOR SHALL PROVIDE BY-PASS PUMPING PER WESTERN VIRGINIA WATER AUTHORITY (WVWA) STANDARDS AND SPECIFICATIONS.
- TEMPORARY BY-PASS PUMP AND DUPLICATE BACKUP PUMP, PROVIDED BY THE CONTRACTOR, SHALL BE WACKER MODEL PT 6LT CENTRIFUGAL TRASH PUMP OR APPROVED EQUAL.
- BY-PASS PUMPING LINE SHALL BE LAID ADJACENT TO NEW SEWER LINE.
- CONTRACTOR SHALL PROVIDE AND INSTALL TEMPORARY, RIGID 8" PVC/HDPE GASKET AND RESTRAINED PRESSURE PIPE FOR BY-PASS PUMPING.
- CONTRACTOR SHALL SUBMIT SHOP DRAWINGS FOR BY-PASS PUMPING COMPONENTS TO THE ENGINEER AND WVWA FOR APPROVAL PRIOR TO BEGINNING WORK.
- BY-PASS PUMPING SHALL BE MANNED CONTINUOUSLY DURING BY-PASS PUMPING PERIOD.

SEQUENCE OF CONSTRUCTION FOR SANITARY SEWER RELOCATION

- NOTIFY WAL-MART, ENGINEER AND THE WESTERN VIRGINIA WATER AUTHORITY (WVWA) ONE WEEK PRIOR TO BEGINNING WORK.
- ONCE MOBILIZED, BEGINNING AT APPROXIMATELY STATION 0+05, INSTALL NEW SEWER LINE INCLUDING MH-2 UP TO APPROXIMATELY STATION 3+70.
- INSTALL 8" TEMPORARY BY-PASS LINE, PLUG LINES AND BEGIN BY-PASS PUMPING (SEE BY-PASS PUMPING NOTES THIS SHEET).
- INSTALL MH-1 AND CONNECT NEW SEWER LINE TO IT.
- EXTEND AND CONNECT NEW SEWER LINE TO EX. MH-3. CORE & INSTALL FLEXIBLE BOOT AT CONNECTION.
- ABANDON EXISTING SEWER LINE BY COMPLETELY FILLING WITH CONCRETE.
- REMOVE PLUGS AND DISCONTINUE BY-PASS PUMPING.
- STABILIZE ALL DISTURBED AREAS PER THE SPECIFICATIONS.