



**Dewberry**

Dewberry &amp; Davis, Inc.

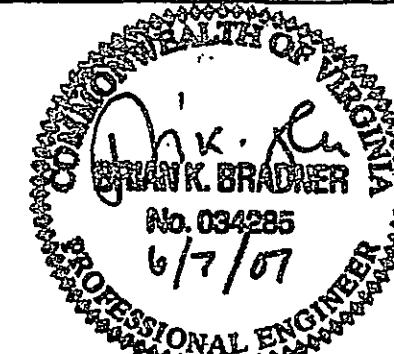
551 PINEY FOREST ROAD  
DANVILLE, VA 24540  
PHONE: 434.797.4497  
FAX: 434.797.4341

# SANITARY SEWER RELOCATION

WAL-MART  
STORE NO. 3243-02

4524 CHALLENGER AVENUE  
ROANOKE, VIRGINIA 24012

SEAN



### KEY PLAN

SCAL

No.	DATE	BY	Description

DRAWN BY BSP  
APPROVED BY BKB  
CHECKED BY JLK  
DATE JUNE 6, 2007

**TITLE**

MISC.  
DETAILS

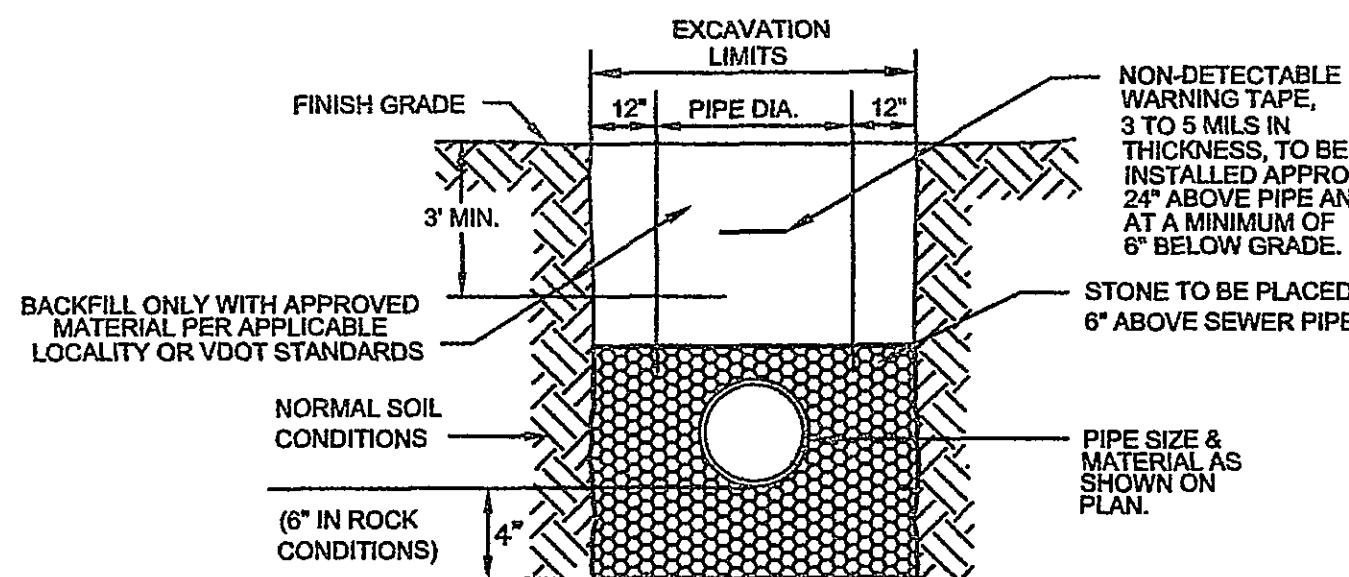
PROJECT NO. 80109900

**S**

SHEET NO. OF

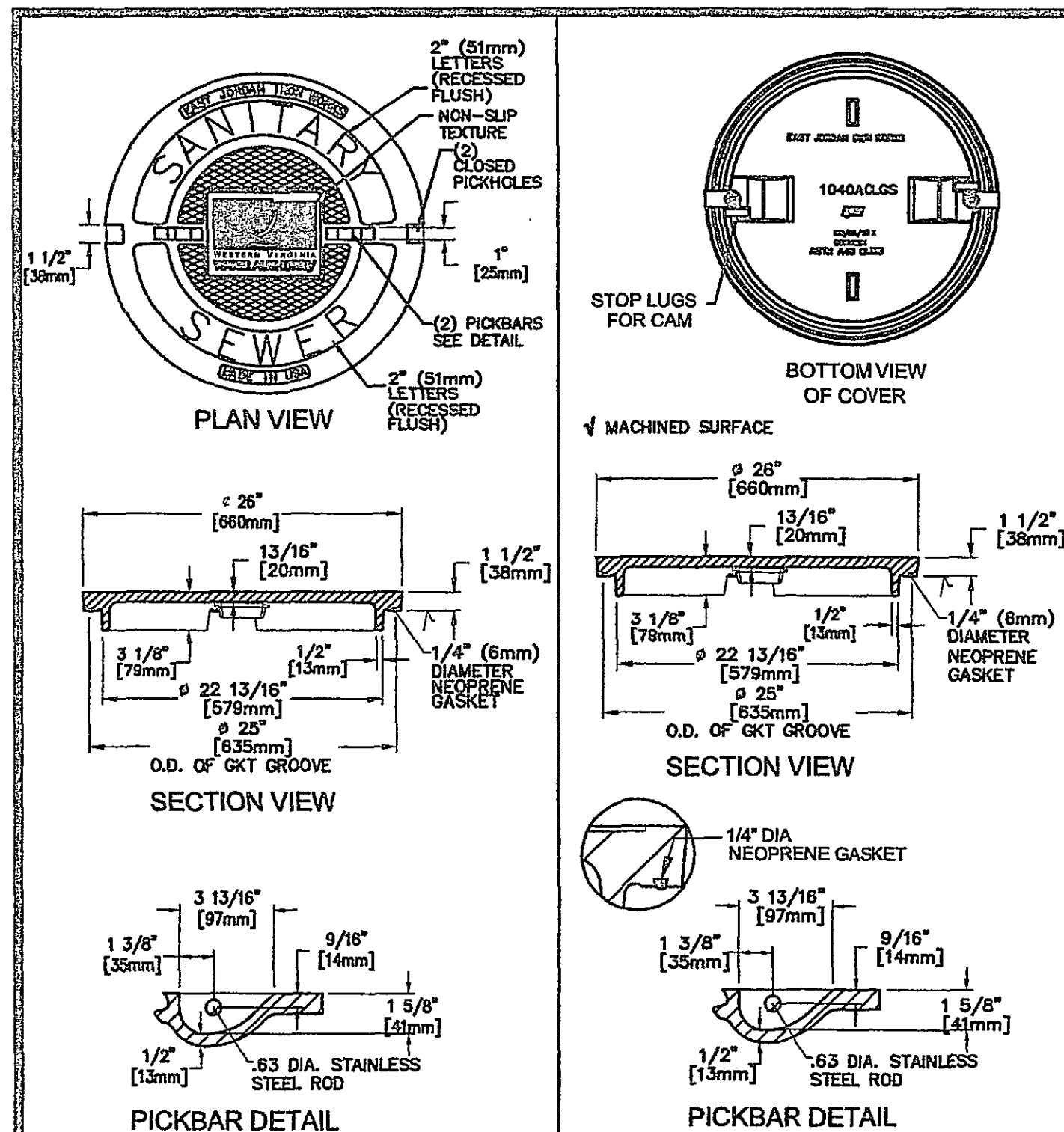
NOTES:

1. BEDDING, HAUNCHING AND INITIAL BACKFILL CONSTRUCTION SHALL BE IN ACCORDANCE WITH MANUFACTURER'S RECOMMENDATION.
2. ALL PVC PIPE SHALL BE BEDDED IN COMPACTED VPIOT #57 OR #68 STONE.
3. IF IT HAS NOT SPECIFIED TO A HIGHER TRAFFIC BEDDING SCHEDULE, LIFT SHALL BE PLACED IN 6" LIFTS FROM BOTTOM OF TRENCH TO 1' ABOVE THE PIPE AND THE REMAINING SHALL BE PLACED IN 10" LIFTS AND SHALL BE COMPACTED TO AT LEAST 90% OF MAXIMUM DENSITY AS DETERMINED BY ASTM D 1556.
4. ALL SEWER LINE PIPE SHALL BE BEDDED IN COMPACTED GRANULAR MATERIAL. BEDDING REQUIREMENTS FOR TRENCH SEWER LINE ARE DEPENDENT ON MANUFACTURER'S BEDDING CRITERIA.
5. ALL EXCAVATIONS SHALL BE COMPLETED WITH OSHA TECHNIQUES. CHAPTER 2, TITLED "EXCAVATIONS, HAUNCHING AND RECOGNITION IN TRENCHING AND SHORING."



WESTERN VIRGINIA WATER AUTHORITY - CONSTRUCTION STANDARDS

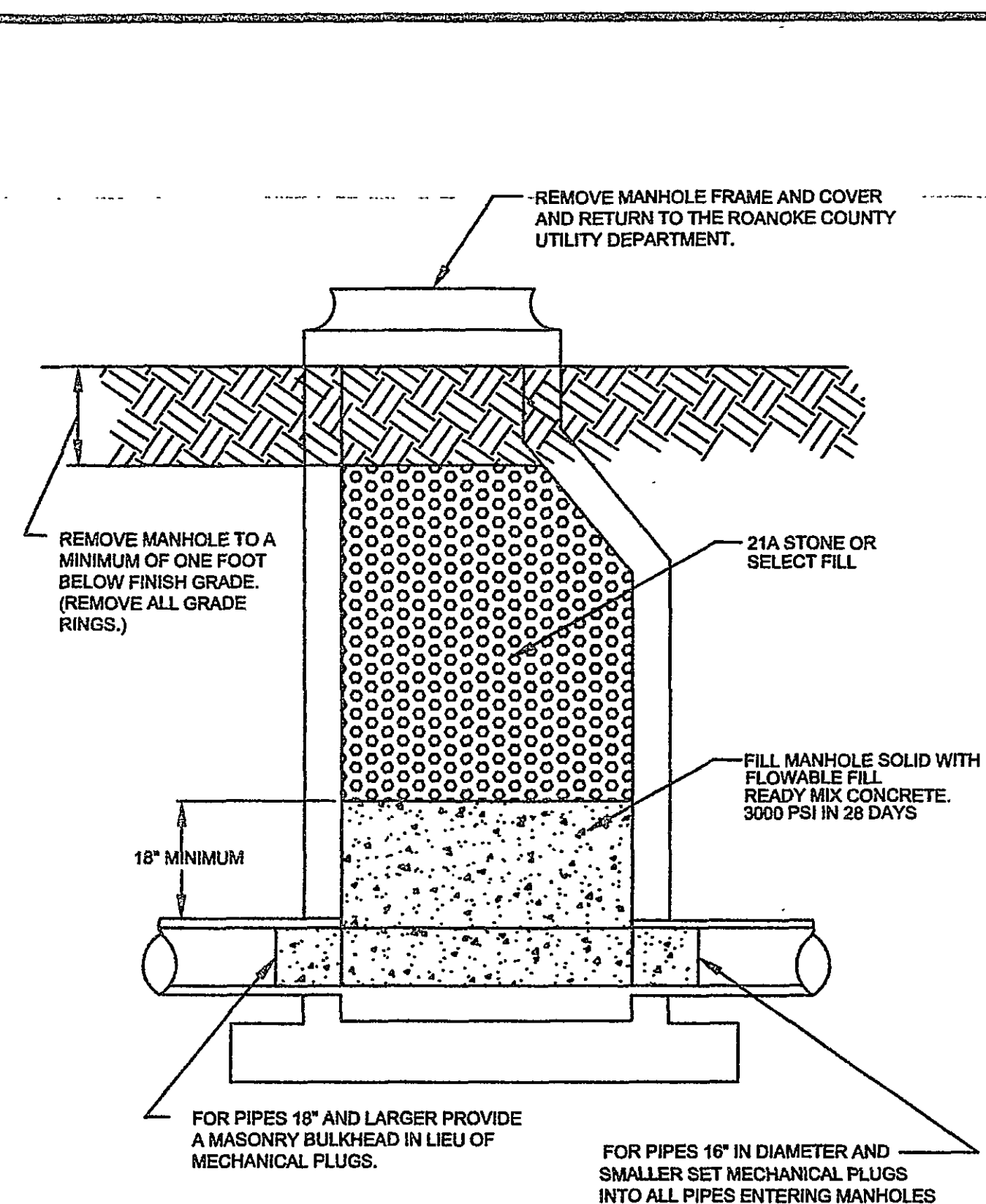
<b>REVISION DATE</b>	BEDDING AND BACKFILL OUTSIDE OF PAVED AREAS	S-30
37/9/04		
03/9/06		



STANDARD MANHOLE COVER MODEL #1040AGS  
BY EAST JORDAN IRON WORKS, INC OR EQUIVALENT.

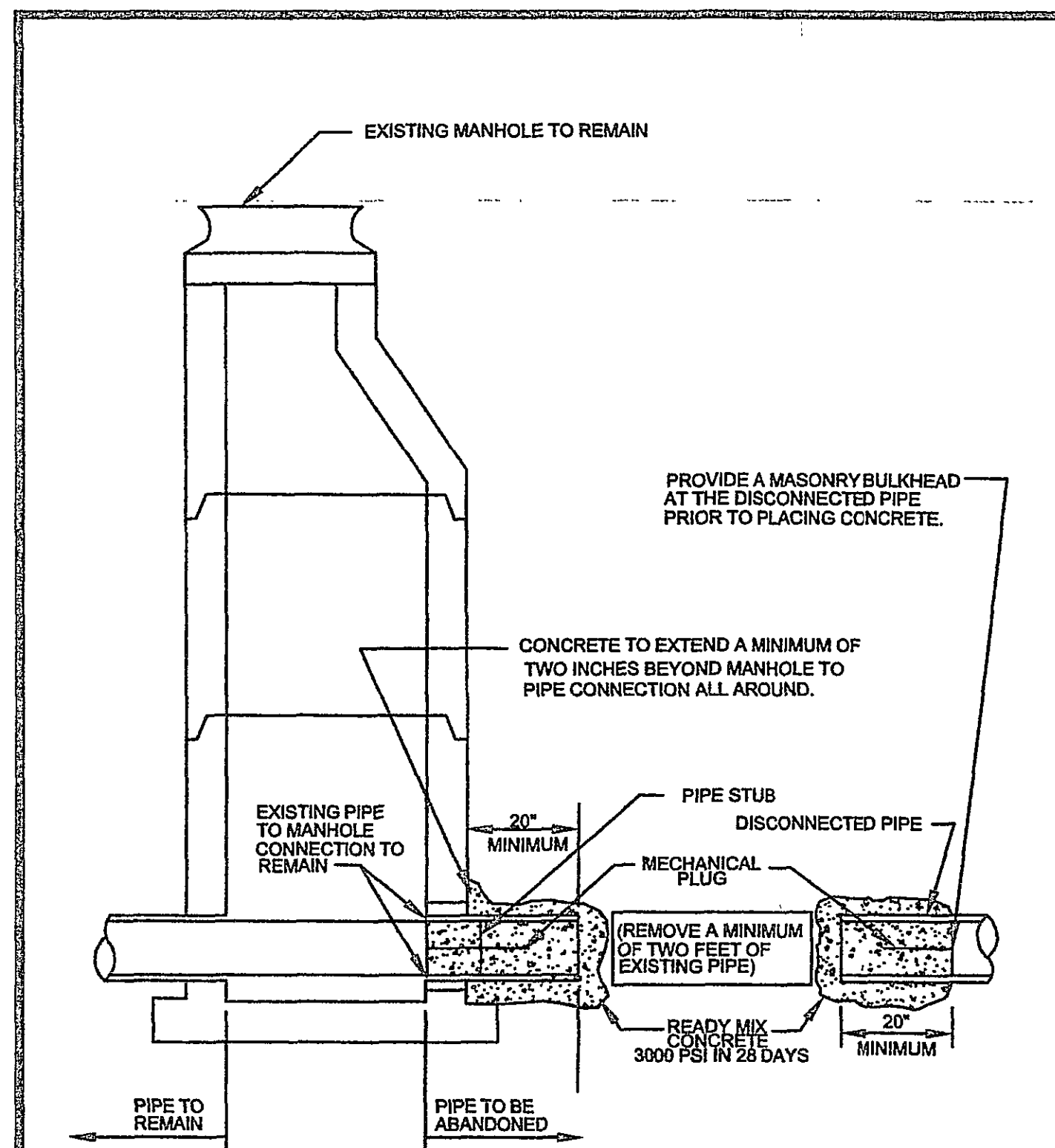
STANDARD MANHOLE COVER	BOLT-DOWN MANHOLE COVER
	

WESTERN VIRGINIA WATER AUTHORITY - CONSTRUCTION STANDARDS		
REVISION	DATE	
07/01/04		
03/01/06		
WATERTIGHT MANHOLE COVER		S-06



WESTERN VIRGINIA WATER AUTHORITY - CONSTRUCTION STANDARDS

REVISION DATE		SANITARY SEWER MANHOLE ABANDONMENT	S-24
7/01/04			

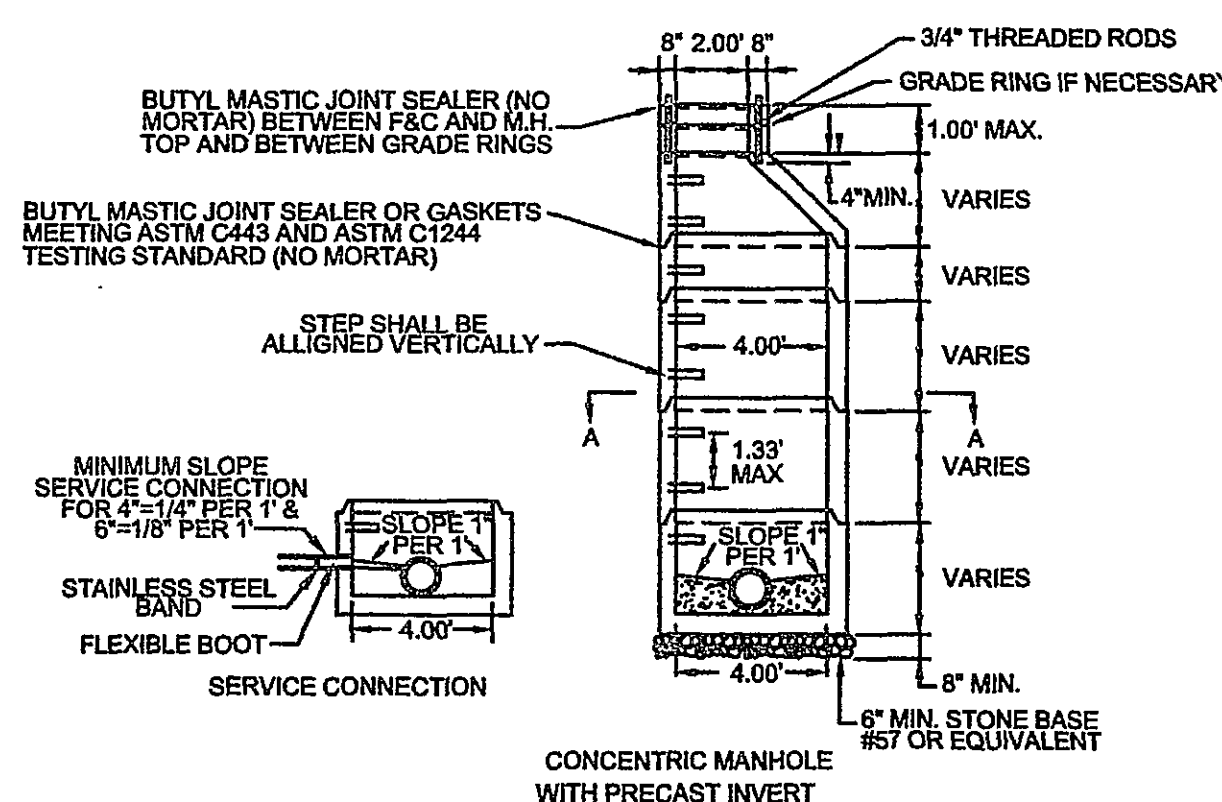
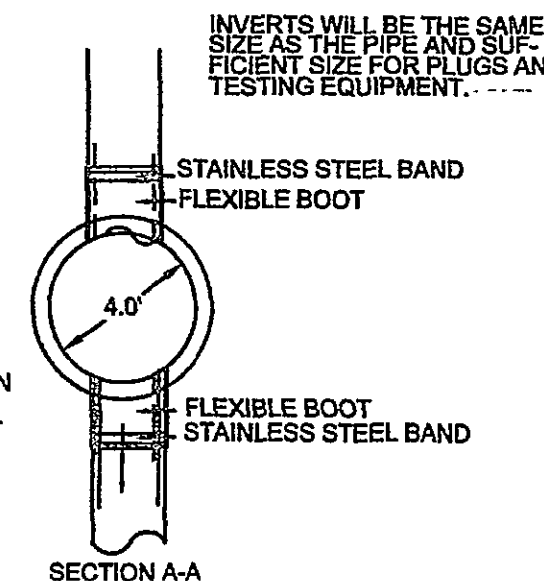


WESTERN VIRGINIA WATER AUTHORITY - CONSTRUCTION STANDARDS

[illegible]

- ## NOTES

1. ALL MANHOLE FRAMES AND COVERS SHALL BE BUILT JORDAN IRON WORKS, INC. WATER TIGHT MANHOLE FRAME MODEL #04042, WATER TIGHT COVER MODEL #04042C, OR APPROVED EQUAL COVER MODEL #04040C2S, OR APPROVED EQUAL BOLT-DOWN MODEL TO BE USED IN AREAS SUBJECT TO FLOODING OR ARE IN THE AREA AUTHORITY... 2. STEPS TO BE VERTICALLY ALIGNED.
3. THE FRAME AND COVER SHALL BE PROPERLY ALIGNED WITH THE 2 FOOT OPENING OF THE MAINLINE STRUCTURE.
4. FLAT TOP MANHOLES MAY ONLY BE SUBSTITUTED WITH THE PERMISSION OF THE UTILITY DIRECTOR. WHEN USED, THE ECCENTRIC OPENING MUST LINE UP WITH THE MAINLINE.
5. SAMPLING MANHOLES IN TRAFFIC AREAS SHALL BE CONSTRUCTED AS PER MANHOLE DETAILS.
6. ALL POINT MANHOLES SHALL BE MANUFACTURED BY PRES-SALE GASKET CORPORATION OR EQUAL.
7. ALL UNUSUAL SPACE BETWEEN PIPE AND PRECAST MANHOLE ON INSIDE OF MANHOLE.



WESTERN VIRGINIA WATER AUTHORITY CONSTRUCTION STANDARDS

REVISION DATE		4' STANDARD MANHOLE FOR PIPE 15" OR SMALLER	S-01
01/04			
01/06			

S-01