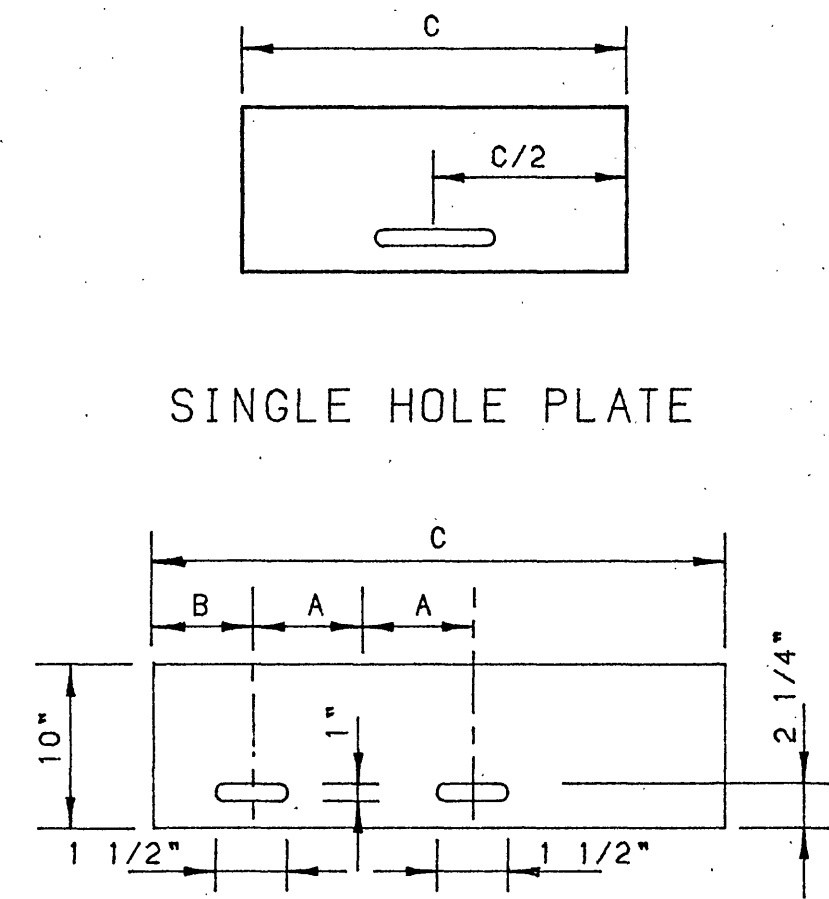
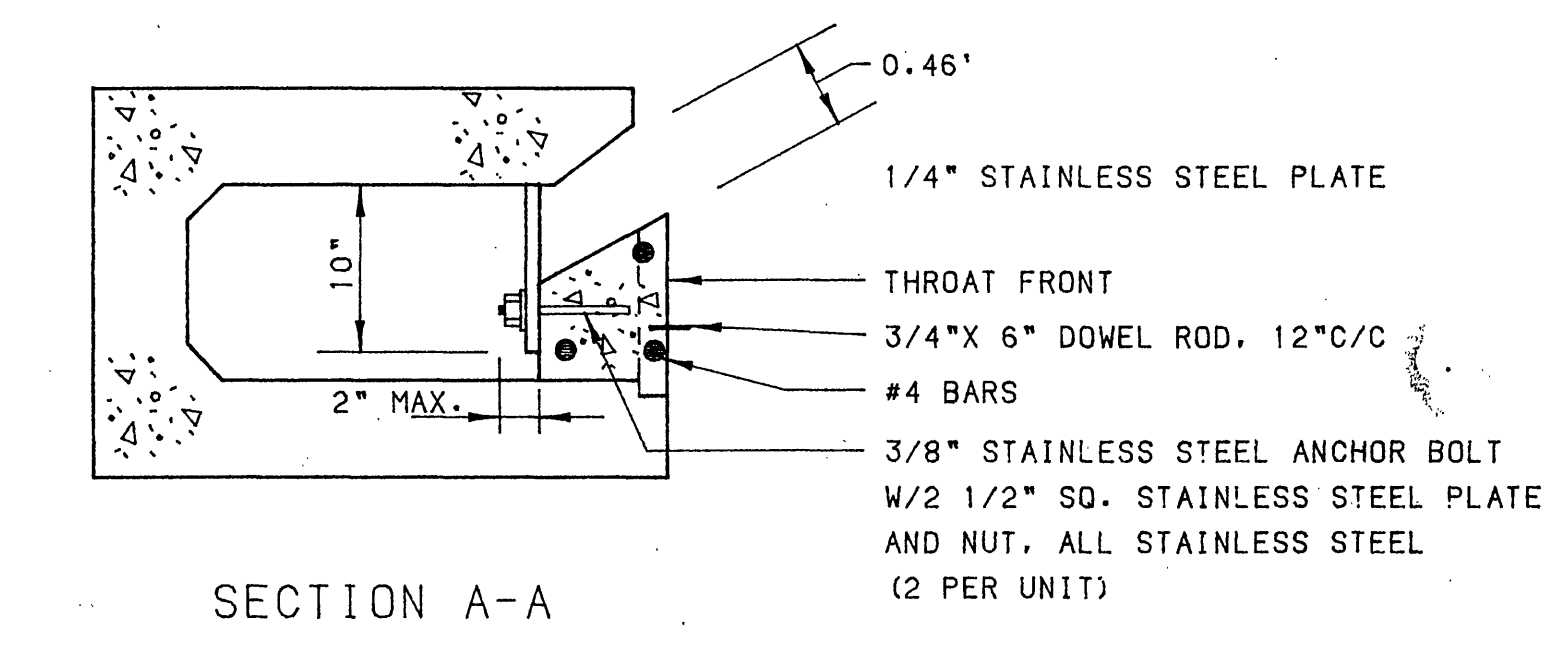


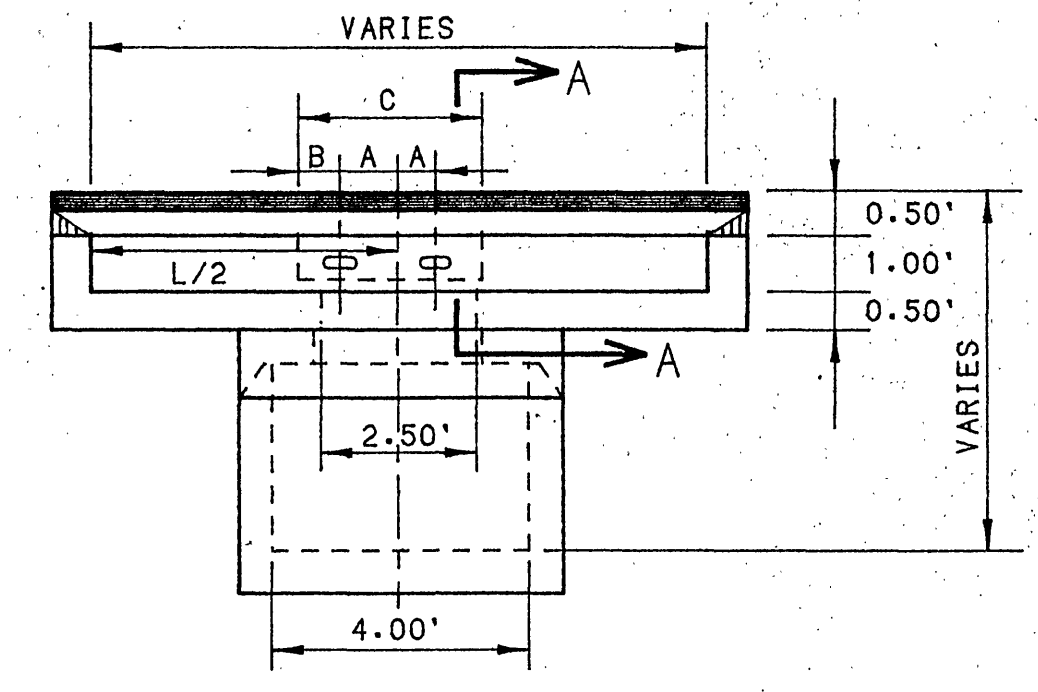
SHEET NO.	STRUCTURE NUMBER	INLET TYPE	THROAT LENGTH	LOCAL DEPRESSION	LOWEST INLET INVT.	INLET TOP	THROAT PLATE DIMENSIONS			REMARKS
							A	B	C	
32	#53	DI-3A	2'-6"	0"	1077.65	1083.15	-	-	1'-3"	SINGLE HOLE PLATE
32	#54	DI-3C	4'-0"	0"	1077.65	1083.15	-	-	-	NO PLATE
33	#56	DI-3A	2'-6"	0"	1079.78	1084.95	-	-	0'-8 1/2"	SINGLE HOLE PLATE
33	#57	DI-3A	2'-6"	0"	1080.06	1085.23	-	-	0'-8 1/2"	SINGLE HOLE PLATE
34	#60	DI-3A	2'-6"	0"	1074.21	1078.22	-	-	-	NO PLATE
34	#61	DI-3A	2'-6"	0"	1074.18	1074.20±	-	-	-	NO PLATE
31	#67	DI-3C	8'-0"	0"	1087.00	1091.50	-	-	-	NO PLATE
30	#70	DI-3C	4'-0"	0"	1086.00	1090.40	-	-	0'-10"	SINGLE HOLE PLATE
30	#71	DI-3C	4'-0"	0"	1086.00	1090.40	-	-	-	NO PLATE
29	#74	DI-3C	12'-0"	0"	1086.17	1092.00	-	-	1'-4 1/4"	SINGLE HOLE PLATE
29	#75	DI-3C	12'-0"	0"	1087.50	1092.17	-	-	-	NO PLATE
35	#400	DI-3A	2'-6"	0"	1079.53	1085.98	-	-	1'-0"	SINGLE HOLE PLATE
35	#401	DI-3A	2'-6"	0"	1080.75	1085.79	-	-	1'-0"	SINGLE HOLE PLATE
35	#403	DI-3A	2'-6"	0"	1085.17	1089.55	-	-	0'-8 1/2"	SINGLE HOLE PLATE
36	#405	DI-3A	2'-6"	0"	1095.00	1101.37	-	-	-	SINGLE HOLE PLATE
36	#406	DI-3A	2'-6"	0"	1095.09	1101.52	-	-	0'-8 1/2"	SINGLE HOLE PLATE
36	#407	DI-3A	2'-6"	0"	1096.20	1102.70	-	-	0'-8 1/2"	SINGLE HOLE PLATE
36	#409	DI-3A	2'-6"	0"	1097.00	1103.50	-	-	0'-8 1/2"	SINGLE HOLE PLATE
36	#411	DI-3A	2'-6"	0"	1098.25	1103.75	-	-	0'-5 3/4"	SINGLE HOLE PLATE
36	#412	DI-3C	4'-0"	0"	1098.25	1104.16	-	-	-	NO PLATE



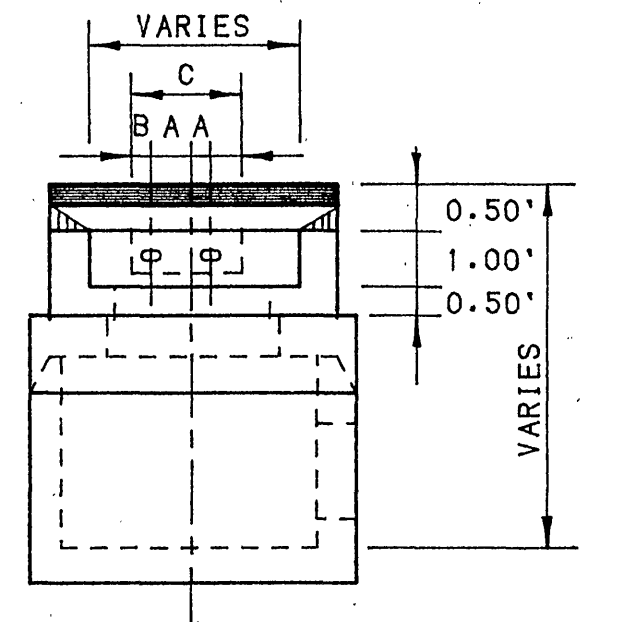
DOUBLE HOLE PLATE



INLET THROAT PLATES
NO SCALE



DI-3C



DI-3A

THROAT PLATE LOCATIONS
ON CURB INLETS
NO SCALE

- NOTES:
- STD. IC-2 FRAME AND COVER IS INSTALLED OVER OPENING IN CURB INLET.
 - THROAT PLATE DETAILS SHOWN ON PRECAST SEGMENTAL INLETS- DETAILS FOR INTEGRAL CAST UNITS ARE THE SAME.

* LOCAL DEPRESSION AT INLET IS NORMALLY 2" FOR THESE INLETS. THIS IS 2" IN ADDITION TO THE NORMAL 2" FALL TRANSVERSELY ACROSS GUTTER FROM PAVEMENT EDGE TO FACE OF CURB. IT IS IMPORTANT THAT THE LOCAL DEPRESSION BE CORRECT. EACH WILL BE CHECKED FOR ACCURACY AND INACCURATE INLET GUTTERS SHALL BE REMOVED AND REPLACED.

Mattern & Craig
CONSULTING ENGINEERS - SURVEYORS
701 FIRST STREET, ROANOKE, VIRGINIA 24016 (703) 345-9342

DESIGNED: SWH/JLJ
CHECKED: SWH
APPROVED: SWH

REVISION	DATE	DESCRIPTION	BY	APP.

DATE
JULY 1986
COMM.
582

WILLIAMSON ROAD STORM DRAIN- PHASE 2
CONTRACT I-C
ROANOKE, VIRGINIA

INLET SCHEDULE AND DETAILS