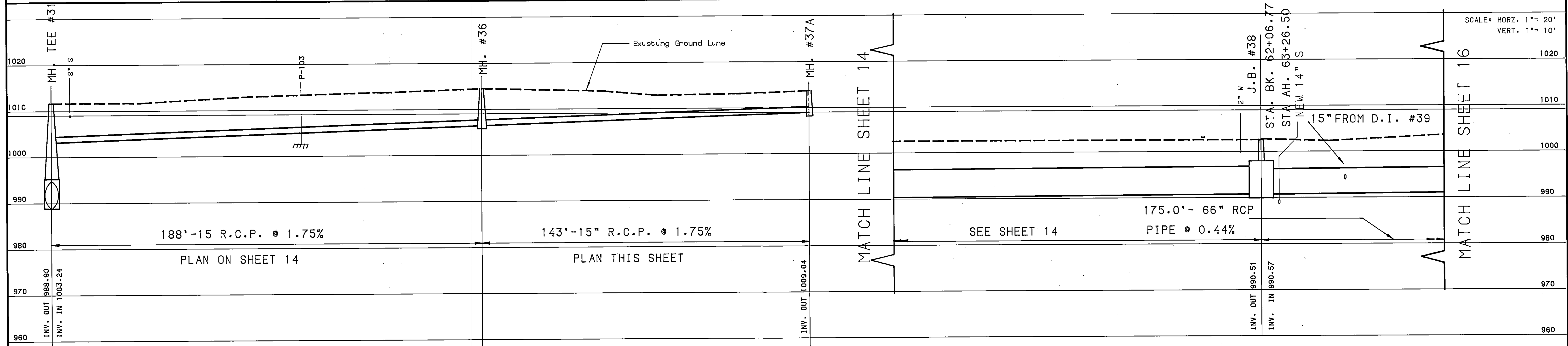
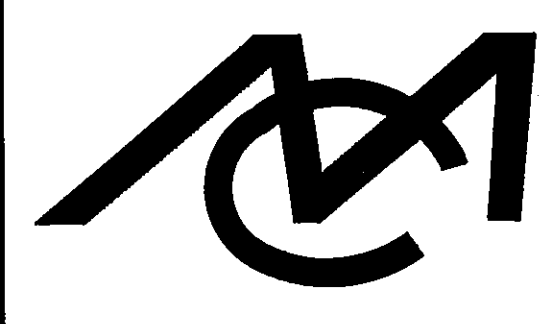
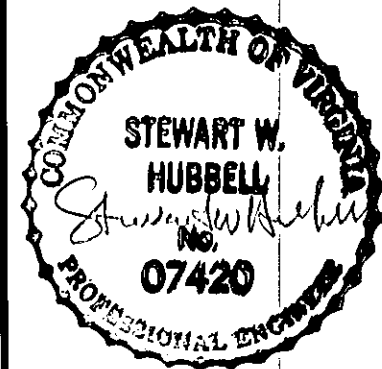
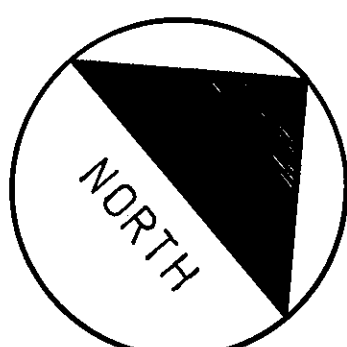
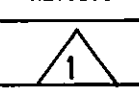


- NOTES:
1. CONNECT EXST. SEWER LATERALS TO NEW SEWER.
 2. ADD MATERIAL TO DRIVEWAYS TO MAKE SMOOTH TRANSITION TO NEW ENTRANCES.



 <p>Mattern & Craig CONSULTING ENGINEERS - SURVEYORS 701 FIRST STREET, ROANOKE, VIRGINIA 24016. (703) 345-0342</p>	DESIGNED:	ARB/SWH			REVISION	DATE	DESCRIPTION	BY	APP.	<p>WILLIAMSON ROAD STORM DRAIN- PHASE 2 CONTRACT II-A ROANOKE, VIRGINIA</p>	SHEET	
	CHECKED:	GRN				DEC. 89	RECORD DRAWING	JLJ	SWH		<p>JULY 1987 COMM.</p>	15
	APPROVED:										<p>580/581</p>	<p>PLAN AND PROFILE</p>