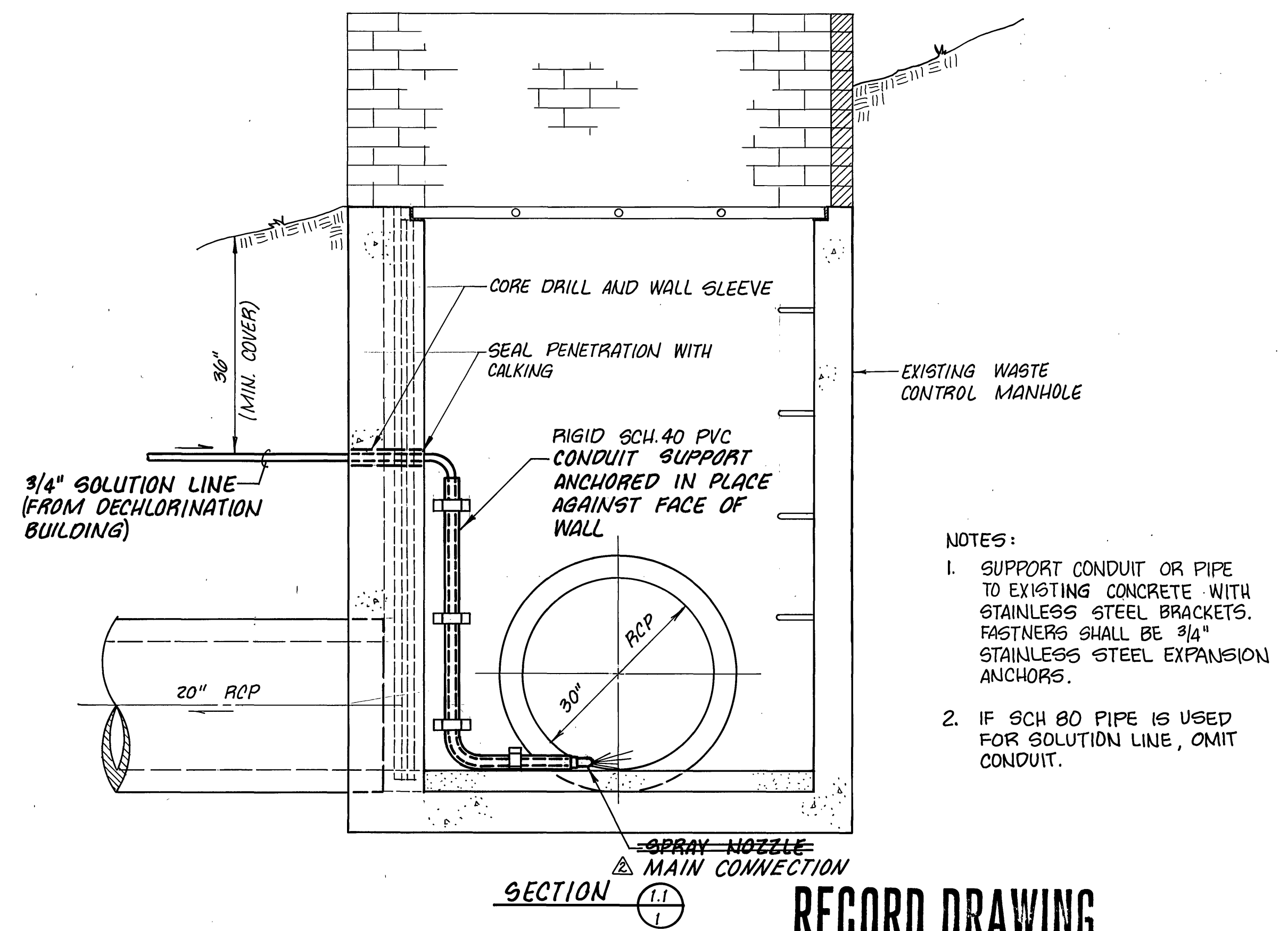
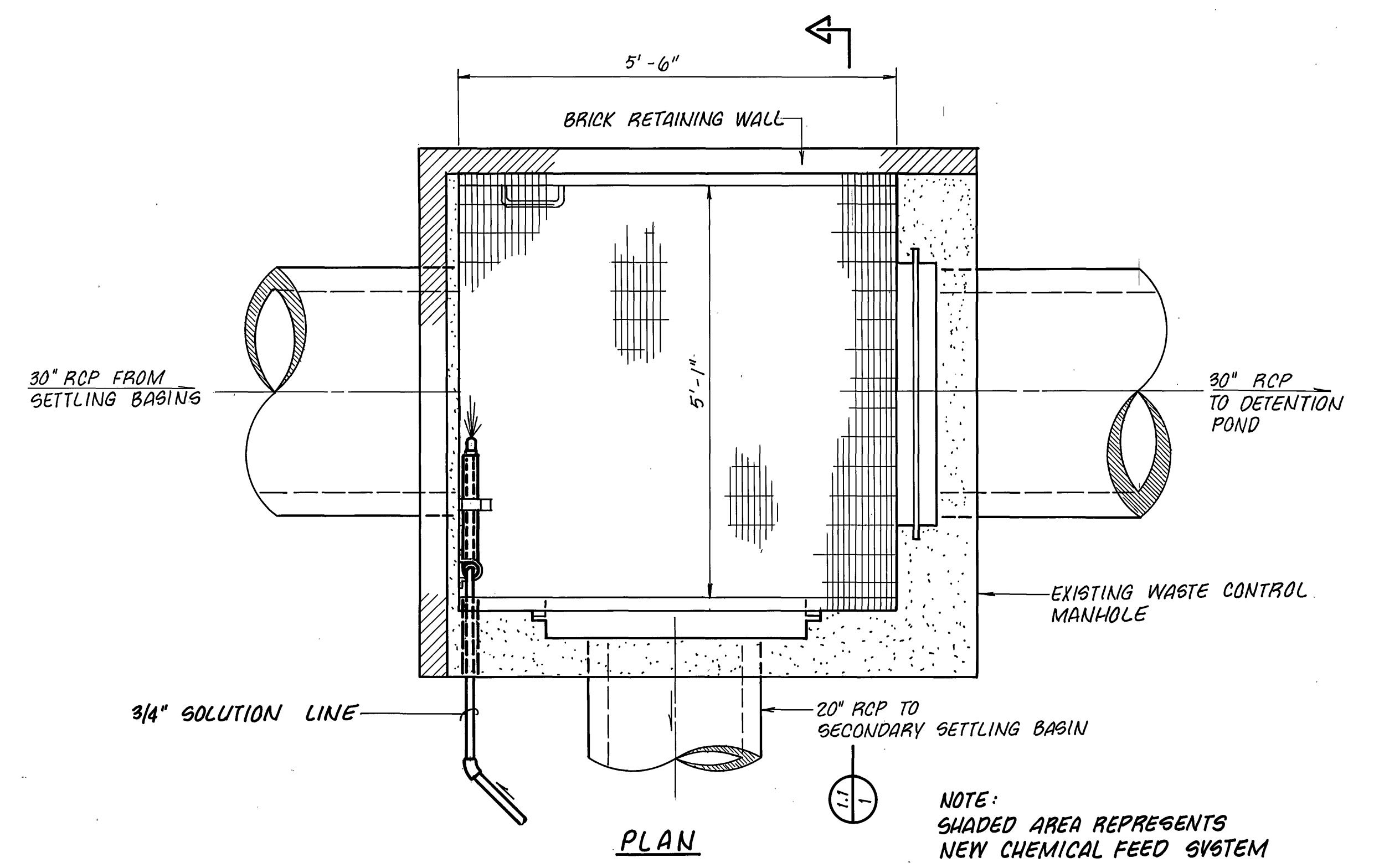


- NOTES:
- UNIT HEATER SHALL BE CHROMALOX MODEL LUH-04-81, OR EQUAL, (4 kw, 240V, 1 PHASE, 60 HZ) COMPLETE WITH INTEGRAL THERMOSTAT AND CONTROL CIRCUIT. MOUNT TO WALL WITH MOUNTING BRACKET (CHROMALOX WUH-01, OR EQUAL).
 - EXHAUST FAN SHALL BE DAYTON MODEL 7F416 1065 CFM @ 1" SP, 1/4 HP, 120V. PROVIDE W/ WALL MOUNTED THERMOSTAT, DISCONNECT, MOTOR OPERATED DAMPER, MOTOR SIDE FAN GUARD, COLLAR FOR WALL MOUNTING OF FAN AND ACCESSORIES.
 - LOUVER SHALL BE 4" DEEP, BLADES ON 4" CENTER, PROVIDE WITH BIRDSCREEN AND MOTOR OPERATED DAMPER (INTERLOCK WITH EXHAUST FAN)
 - SEE SHEET 2 FOR ELECTRICAL PLAN
 - CONTRACTOR SHALL COORDINATE NECESSARY SIZE OF OPENINGS WITH FAN AND LOUVER MANUFACTURERS AND PROVIDE REQUIRED OPENINGS WHERE INDICATED ON DRAWINGS.
 - PROVIDE POSITIVE DRAINAGE AWAY FROM BUILDING.
 - INSTALL 1/2" POLYSTYRENE FOAM BOARD INSULATION OVER ENTIRE SURFACE AREA OF INTERIOR WALLS AND CEILING. ADHESIVES SHALL BE AS RECOMMENDED BY INSULATION MANUFACTURER. GALV. WATERLINE INSUL.

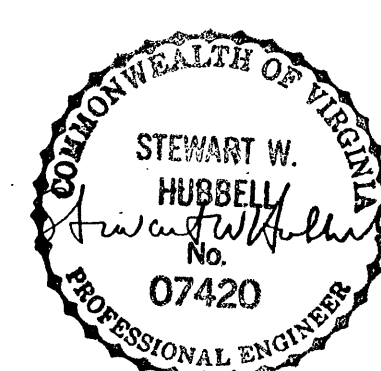
3 LAYERS WALLS INSIDE BLDG. - FOIL-COVERED HIGH DENSITY FOAM.



RECORD DRAWING

| | | | | | | | |
|-----------|-----|------|----------|-------------|--|----|-----|
| DESIGNED | JSL | DATE | 12/16/91 | DESCRIPTION | WATER LINE & PUMP LOCATION, MISC. NOTE, ELEC. CND. | BY | WCB |
| DRAWN | TAM | DATE | 3/20/91 | DESCRIPTION | WATER LINE LOCATION, MISC. NOTES, ELECTRICAL | BY | JSL |
| CHECKED | SWH | DATE | | DESCRIPTION | | BY | |
| APPROVED | | DATE | | DESCRIPTION | | BY | |
| SUBMITTED | | DATE | | DESCRIPTION | | BY | |

| | |
|--|-----------------|
| CARVINS COVE FILTER PLANT BACKWASH WASTE WATER DECHLORINATION FACILITY SITE PLAN AND DETAILS ROANOKE, VIRGINIA | |
| SCALE: AS SHOWN | COMM. NO. 986 A |
| DATE: DEC. 26, 1989 | SHEET 1 |



Mattern & Craig
CONSULTING ENGINEERS • SURVEYORS