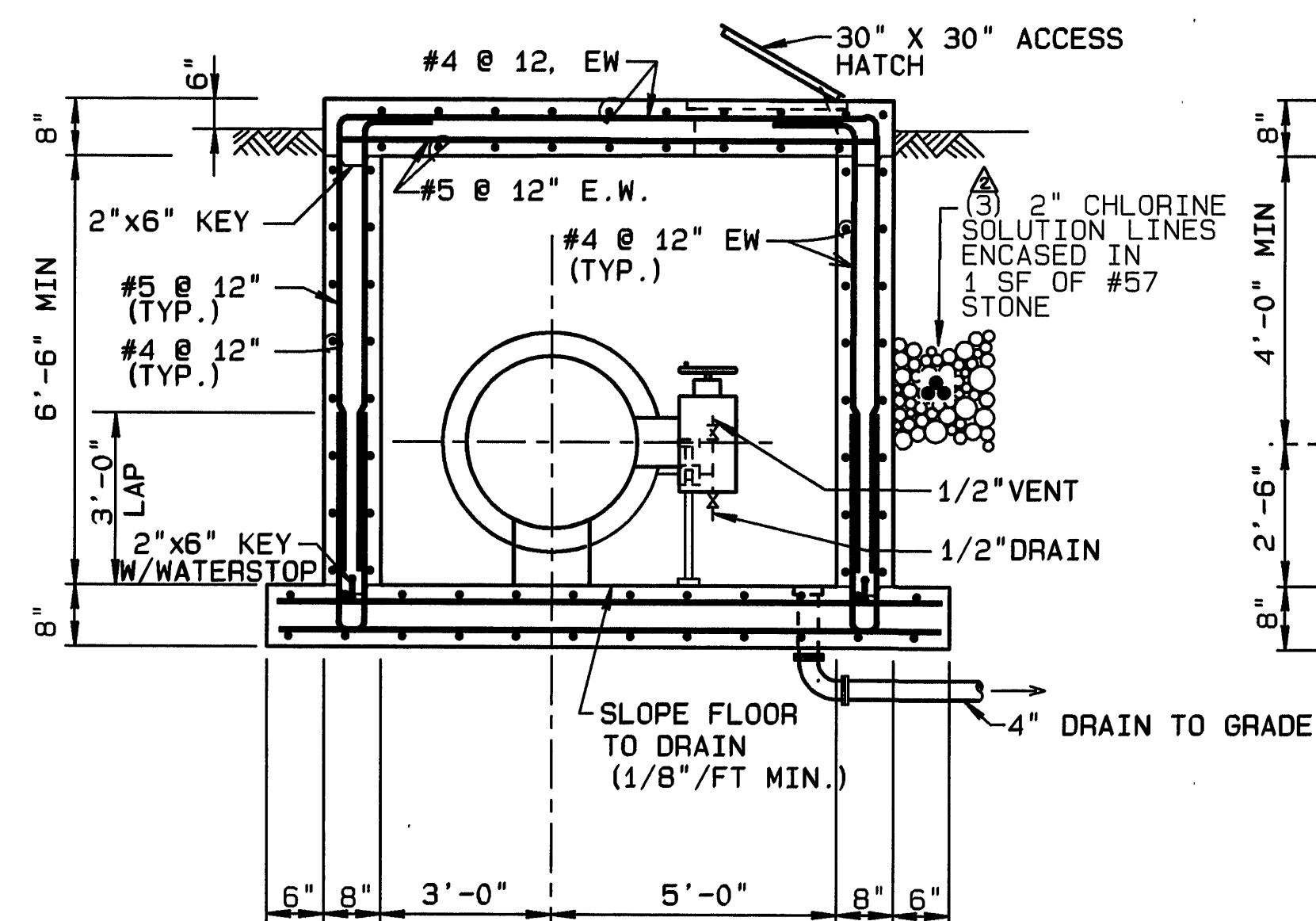
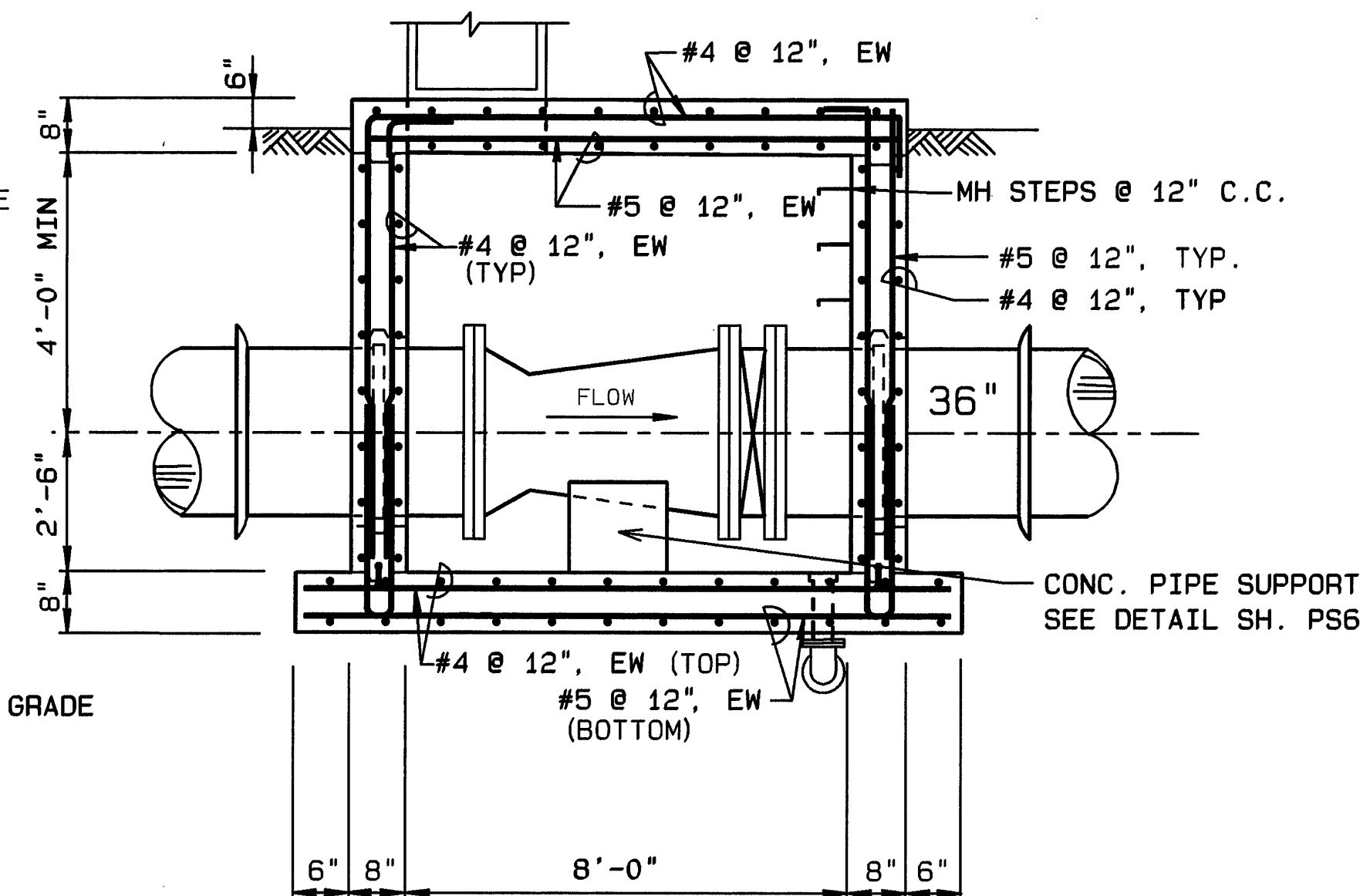


PLAN - 36" DIA. VENTURI METER VAULT (TYP. OF 2)

SCALE: 3/8" = 1'-0"



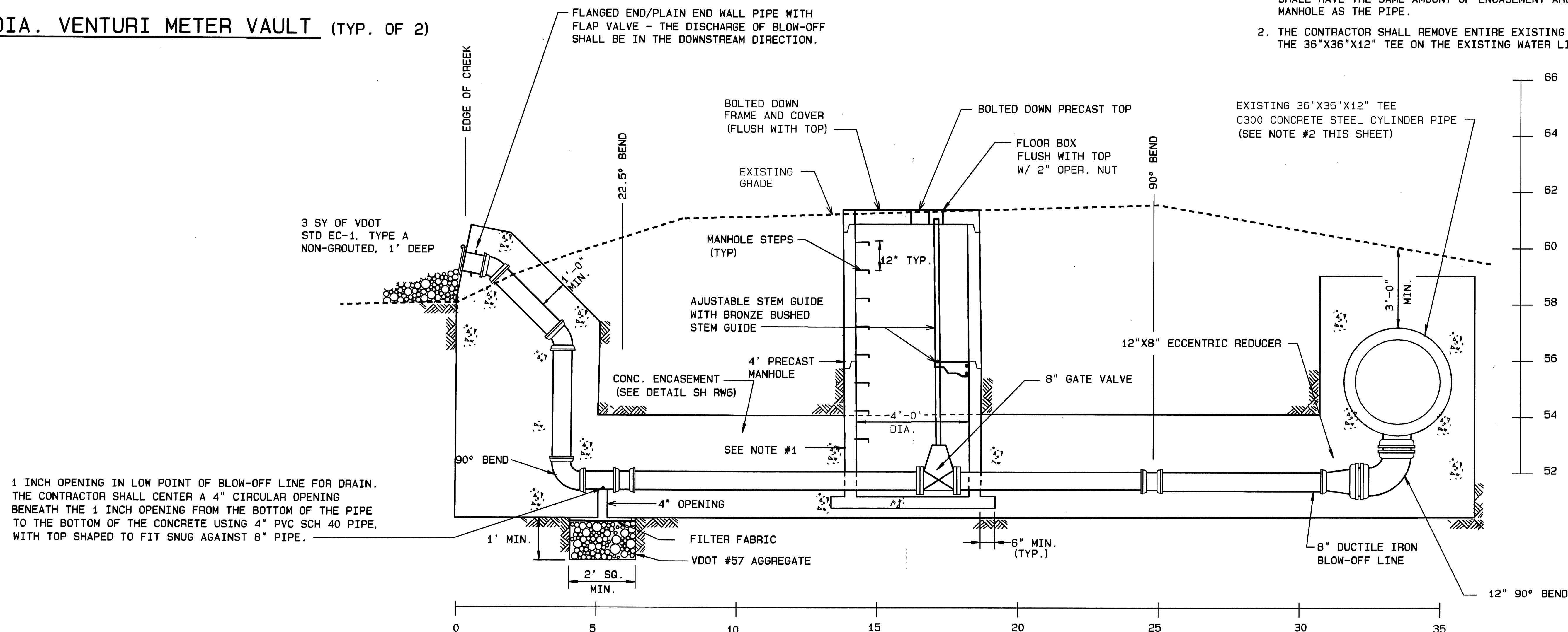
SECTION A-A



SECTION B-B

NOTES:

1. ALL MANHOLES CONNECTED TO PIPE THAT IS CONCRETE ENCASED SHALL HAVE THE SAME AMOUNT OF ENCASEMENT AROUND THE MANHOLE AS THE PIPE.
2. THE CONTRACTOR SHALL REMOVE ENTIRE EXISTING BLOW-OFF TO THE 36"X36"X12" TEE ON THE EXISTING WATER LINE.



BLOW-OFF #2 (SEE PLAN SHEET RW3)

HORIZONTAL SCALE: 1/2"=1'-0"

SCALE: AS NOTED

RECORD DRAWING

MATTERN & CRAIG CONSULTING ENGINEERS • SURVEYORS ROANOKE VIRGINIA	DESIGNED:		REV	DATE	DESCRIPTION	BY	APP.	CARVINS COVE FILTER PLANT IMPROVEMENTS - PHASE I ROANOKE, VIRGINIA	DATE
	RFP		1	8/92	MISCELLANEOUS	DSG	RWB		MARCH 1992
ALVORD, BURDICK & HOWSON ENGINEERS CHICAGO	DRAWN:		2	5/93	C.O. #3	CLD	RWB	RAW WATER LINE VENTURI VAULTS AND DETAILS	COMM. NO.
	FMP								1138
	CHECKED:								SHEET
	SWH								RW7A