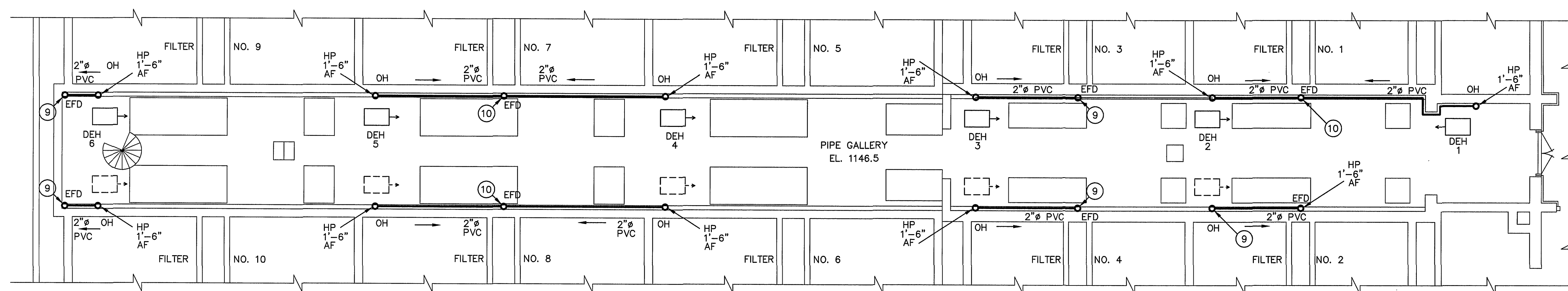


VENTILATION SCHEME  
MAIN FLOOR PLAN  
SCALE: 1/8" = 1'-0"



SYMBOLS:  
 OH - OPEN HUB CONNECTION FOR DEHUMIDIFIER DRAIN INLET TUBE  
 EF - WALL EXHAUST FAN  
 DEH - DEHUMIDIFIER UNIT  
 EFD - EXISTING FLOOR DRAIN  
 HP - HIGH POINT OF DRAIN PIPE  
 PVC - POLY VINYL CHLORIDE PIPING

PROPOSED DEHUMIDIFICATION  
SYSTEM - PIPE GALLERY  
PIPE GALLERY FLOOR PLAN  
SCALE OF DRAWING 1/8" = 1'-0"

8' 6' 4' 2' 0' 8' 16'

#### DRAWING NOTES

- ENTIRE EXISTING WINDOW SASH TO BE REMOVED AND REPLACED WITH COMBINATION FIXED RAIN LOUVER AND 120V MOTORIZED DAMPER SET PROVIDED PER ARCHITECTURAL SPECS. AND DWGS.
- REMOVE EXISTING WINDOW SASH PER ARCHITECTURAL DRAWINGS. EXHAUST LOUVER TO BE PROVIDED PER ARCHITECTURAL SPECS. AND DWGS.
- MOUNT WALL EXHAUST FAN IN UPPER SECTION OF WINDOW OPENING TO ALLOW WALKWAY ACCESS BELOW FAN. PROVIDE INTERMEDIATE PANEL BOOT OF 14 GAGE GALVANIZED METAL, EPOXY PAINTED, REINFORCED AS REQUIRED, FOR BOLTING OF FAN PANEL. PER DETAIL DRAWING. PROVIDE RUBBER GASKETING AT PERIMETER OF CONTACT SURFACES TO ELIMINATE TRANSMISSION OF VIBRATION.
- MOTORIZED BACKDRAFT DAMPERS ARE PROVIDED BY VENDOR PER HVAC EQUIPMENT SCHEDULE WITH ACCESSORIES INDICATED.
- MOUNT ELECTRIC THERMOSTAT AS PROVIDED BY HVAC CONTROLS CONTRACTOR AT 4'-6" A.F. ELEVATION AND LOCATE WITHIN 12" OF INLET FOR EXHAUST FAN EF1 THROUGH EF4.
- FOR VENTILATION SCHEME, REMOVE WINDOW SASH AND PROVIDE PERMANENT OPENING PER DETAILS ON ARCHITECTURAL DRAWINGS.
- FOR DEHUMIDIFICATION SCHEME, PIPE GALLERY AREA MUST BE SEALED FROM OTHER AREAS WHERE POSSIBLE.
  - FILTER OPERATING TABLES HAVE A NOMINAL 2'-4" FLOOR OPENING AT EACH LOCATION. SEAL EACH OPENING WITH REMOVABLE 18 GA. ALUMINUM PANELS BASED ON FIELD CONDITIONS.
- SPIRAL STAIR CASE TO HAVE AIR LOCK VESTIBULE AT OPERATING GALLERY LEVEL PER ARCHITECTURAL DRAWING DETAILS.
- PROVIDE ELBOW CONNECTION ABOVE EXISTING FLOOR DRAIN APPROX. 1'-0" A.F. WITH DROP PIPE 6" ABOVE DRAIN TOP AT OPEN SIGHT CONNECTION. HORIZONTAL PIPE RUNS TO HAVE MIN. 1/8" PER SLOPE TOWARD FLOOR DRAIN. ROUTE PIPING FLUSH WITH WALL AND CLAMP AT 5 FT. CENTERS (MIN.).
- PROVIDE "Y" CONNECTION FOR TWO INLETS WITH SAME CONDITION AS STATED ABOVE.
- DEHUMIDIFIERS DEH-1 THRU DEH-6 ARE PORTABLE AND CAN BE LOCATED EITHER WHERE INDICATED OR AT THE ALTERNATE LOCATIONS TO SUIT FIELD CONDITIONS.

#### DRAWING NOTES

- GENERAL CONTRACTOR, TOGETHER WITH ELECTRICAL CONTRACTOR AND HVAC CONTROLS CONTRACTOR ARE RESPONSIBLE FOR PROVIDING ELECTRICAL POWER AND ELECTRICAL WIRING CONTROL SYSTEMS TO HVAC RELATED EQUIPMENT DEFINED ON MECHANICAL AND ELECTRICAL DRAWINGS AND SPECIFICATIONS.
- WALL EXHAUST FAN EF-1 THRU EF-4 ARE TO HAVE OUTDOOR AIR INLET LOUVER/DAMPER SETS INTER-LOCKED AS INDICATED FOR FAN ON/OFF OPERATION.

**DRAWING OF RECORD**  
SEP 30 1997  
DATE:

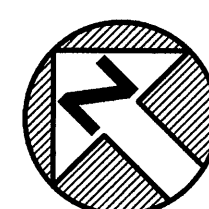
**MATTERN & CRAIG**  
CONSULTING ENGINEERS • SURVEYORS  
ROANOKE VIRGINIA

**ALVORD, BURDICK & HOWSON**  
ENGINEERS CHICAGO

DESIGNED:

DRAWN: H. FERRERA  
C. MANUEL  
YOUR NAME HERE  
YOUR NAME HERE

CHECKED:



| REV. | DATE | DESCRIPTION | BY | APP. |
|------|------|-------------|----|------|
|      |      |             |    |      |
|      |      |             |    |      |
|      |      |             |    |      |
|      |      |             |    |      |
|      |      |             |    |      |
|      |      |             |    |      |
|      |      |             |    |      |

**CARVINS COVE FILTER PLANT IMPROVEMENTS - PHASE I**

ROANOKE, VIRGINIA

**FILTER BLDG.**  
**VENTILATION & DEHUMIDIFICATION SYSTEMS**

DATE  
APRIL 1992  
COMM. NO.  
9130  
SHEET  
**M1**