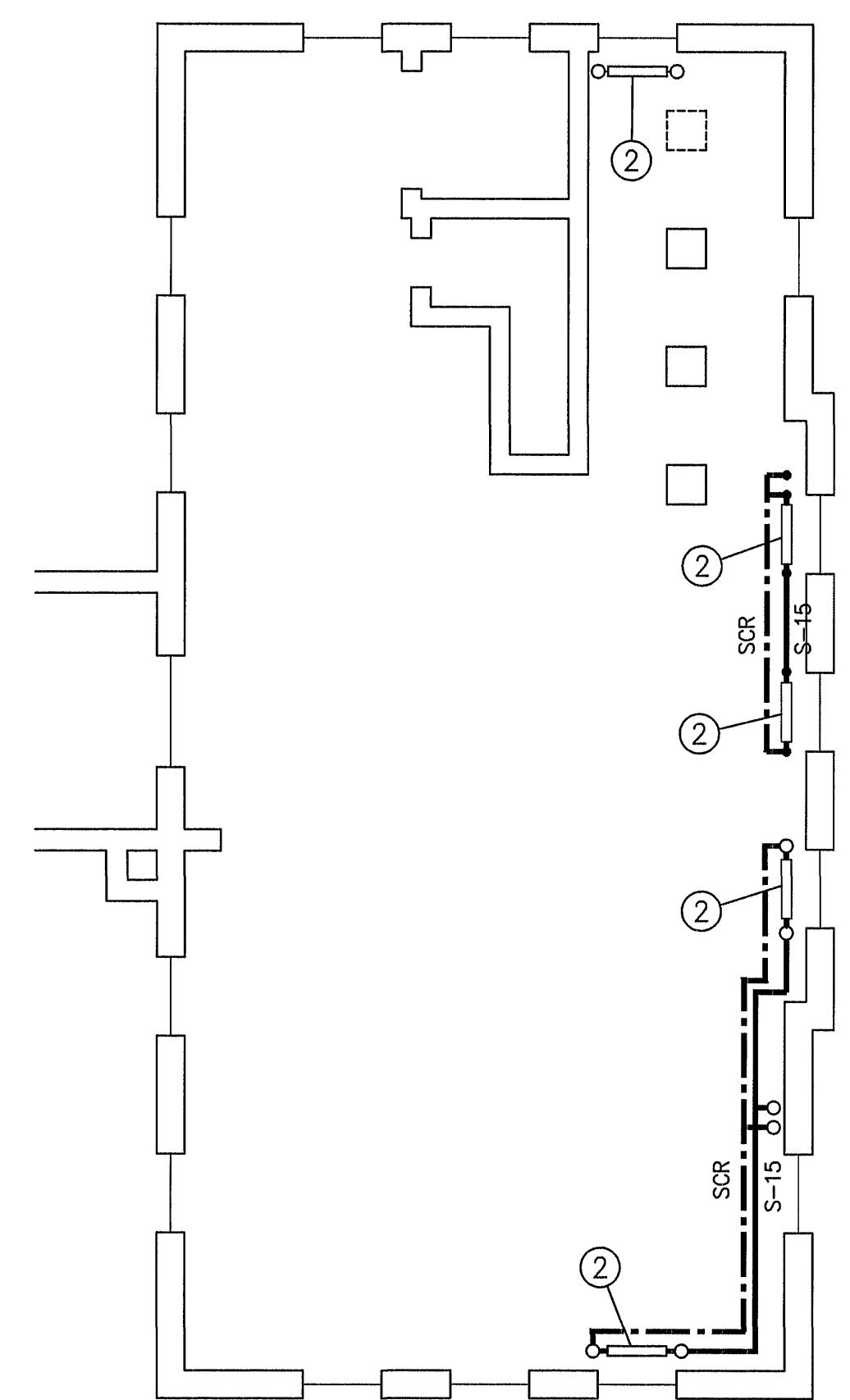
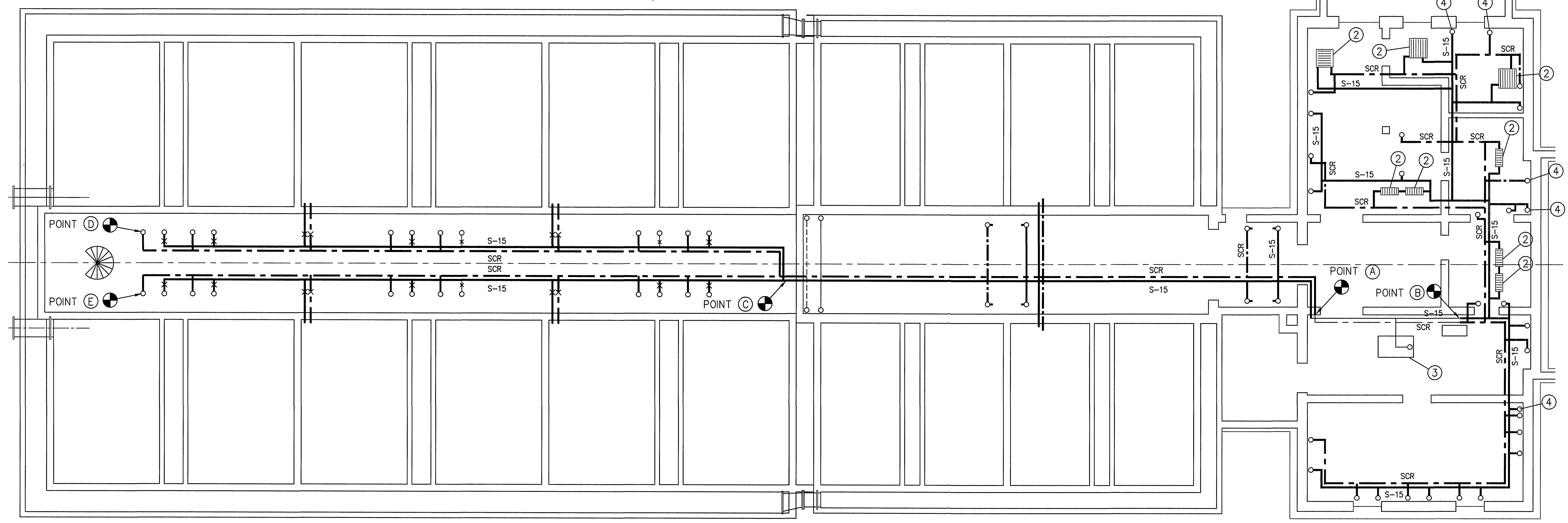


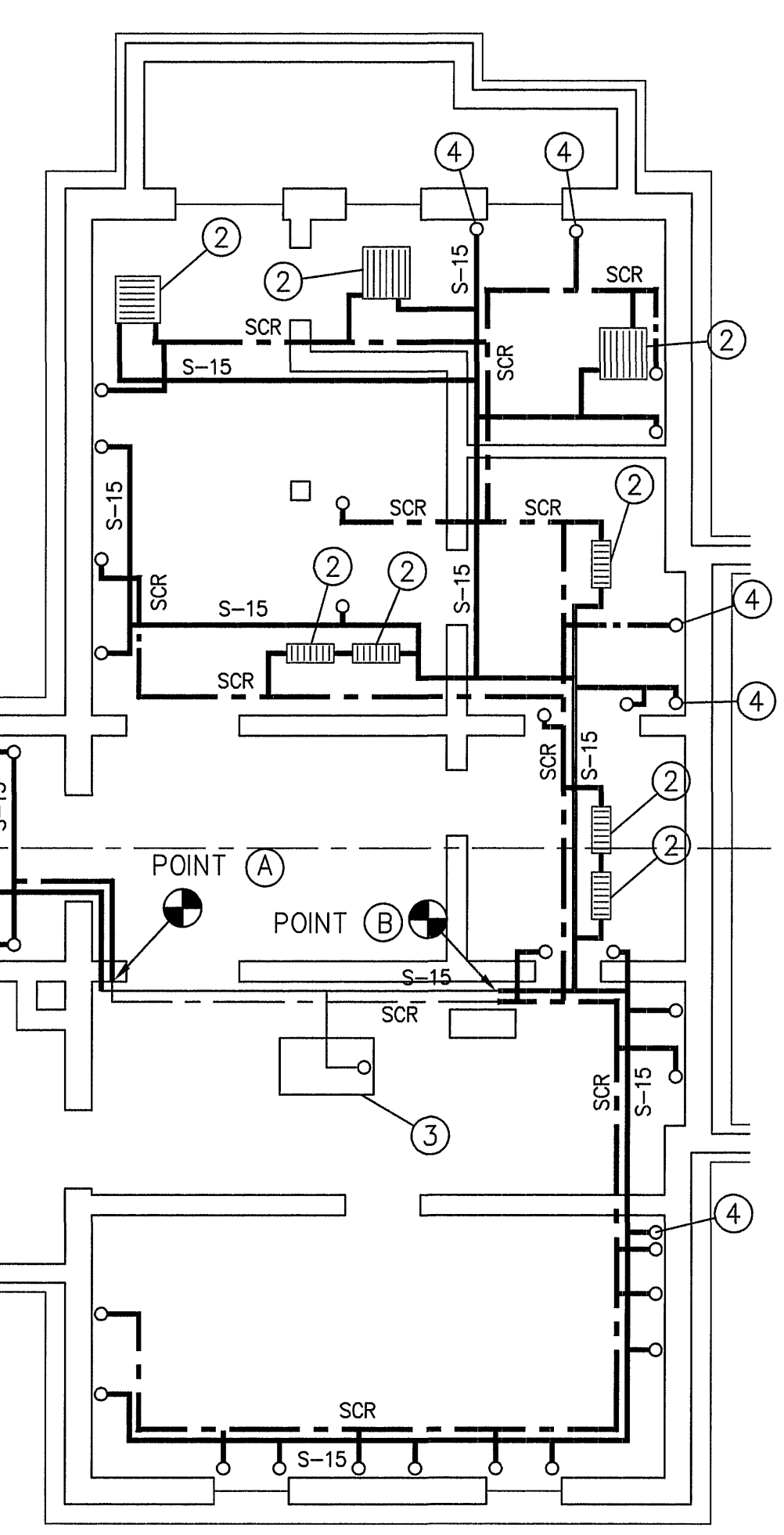
AREA HEATING SYSTEM DEMOLITION LAYOUT
PLAN AT FILTER OPERATING GALLERY - EL. 1157.50
SCALE: 1/8" = 1'-0"



AREA HEATING SYSTEM DEMOLITION
PLAN @ EL. 1169.50
SCALE: 1/8" = 1'-0"



AREA HEATING DEMOLITION LAYOUT
PLAN AT FILTER PIPE GALLERY - EL. 1146.50
SCALE: 1/8" = 1'-0"

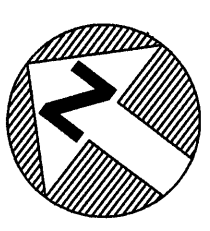



DRAWING OF RECORD
DATE: SEP 30 1997

DRAWING NOTES

- REMOVE HEAT EXCHANGER TO SALVAGE. REMOVE SUPPORT FITTINGS, PATCH WALL DAMAGE AND RESTORE WALL SURFACE TO ORIGINAL CONDITION TO MATCH EXISTING WALL SURFACING.
- EXISTING HEAT EXCHANGERS TO REMAIN BUT REMOVE VALVES, TRAPS, VENTS, ETC. FOR REWORK BY OTHERS.
- EXISTING STEAM HEATING BOILER SYSTEM WITH CONDENSATE PUMPSET, BOILER FEEDWATER UNIT, ETC. WILL REMAIN. THE BASIC STEAM SUPPLY PIPING AND CONDENSATE RETURN PIPING WITHIN THE BOILER ROOM WILL REMAIN EXCEPT FOR RENOVATION OF VALVES, TRAPS, ETC. THAT WILL BE REWORK BY OTHERS.
- IF POSSIBLE, REMOVE STEAM AND CONDENSATE PIPING TO UPPER LEVEL RADIATION @ 1169.50. MAKE FIELD DETERMINATION OF FEASIBILITY IF WALL DAMAGE IS A PROBLEM.
- EXISTING STEAM AND CONDENSATE RETURN PIPING DISTRIBUTION SYSTEM REMOVAL REQUIREMENT:
 - FILTER PIPING GALLERY
REMOVE ALL PIPING FROM POINT (A) OUTWARD FROM BOILER AREA TO POINT (C) THENCE FROM POINT (C) TO POINT (D) AND FROM POINT (C) TO POINT (E).
REMOVE SIDE PIPING BRANCHES OUTWARD TO WALL HEAT EXCHANGERS PLUS THE HEAT EXCHANGERS.
REMOVE PIPING BRANCHES TO EACH FILTER OPERATING TABLE RADIATION UNIT, BUT THE RADIATION UNITS ARE TO REMAIN.
 - ADMINISTRATION BUILDING
REMOVE ALL PIPING FROM POINT (B) OUTWARD FROM BOILER AREA THROUGHOUT THE BASEMENT AREA PLUS RISERS.
CERTAIN RADIATORS ARE TO REMAIN AND OTHERS ARE TO BE REMOVED AS SCHEDULED.
 - GENERAL NOTE:
THE NEW PIPING SYSTEM TO BE INSTALLED WILL GENERALLY FOLLOW THE ROUTE OF THE DEMOLISHED PIPING SYSTEM WHERE FEASIBLE. AND EXISTING HANGER SUPPORTS SHOULD BE EVALUATED FOR RE-USE WHERE POSSIBLE. HANGER SUPPORTS NOT SUITABLE FOR REWORK SHOULD BE REMOVED AND ORIGINAL BUILDING FINISH SHOULD BE RESTORED.

LEGEND:
S-15 STEAM SUPPLY PIPING
SCR CONDENSATE RETURN PIPING

MATTERN & CRAIG CONSULTING ENGINEERS • SURVEYORS ROANOKE VIRGINIA	DESIGNED: S.C.			REV.	DATE	DESCRIPTION	BY	APP.	CARVINS COVE FILTER PLANT IMPROVEMENTS – PHASE I ROANOKE, VIRGINIA	DATE APRIL 1992	
	DRAWN: H.R.F.										COMM. NO. 9130
	CHECKED: S.C.										
ALVORD, BURDICK & HOWSON ENGINEERS CHICAGO									ADMINISTRATION & FILTER BLDG. DEMOLITION TO PRESENT STEAM HEATING SYSTEM		