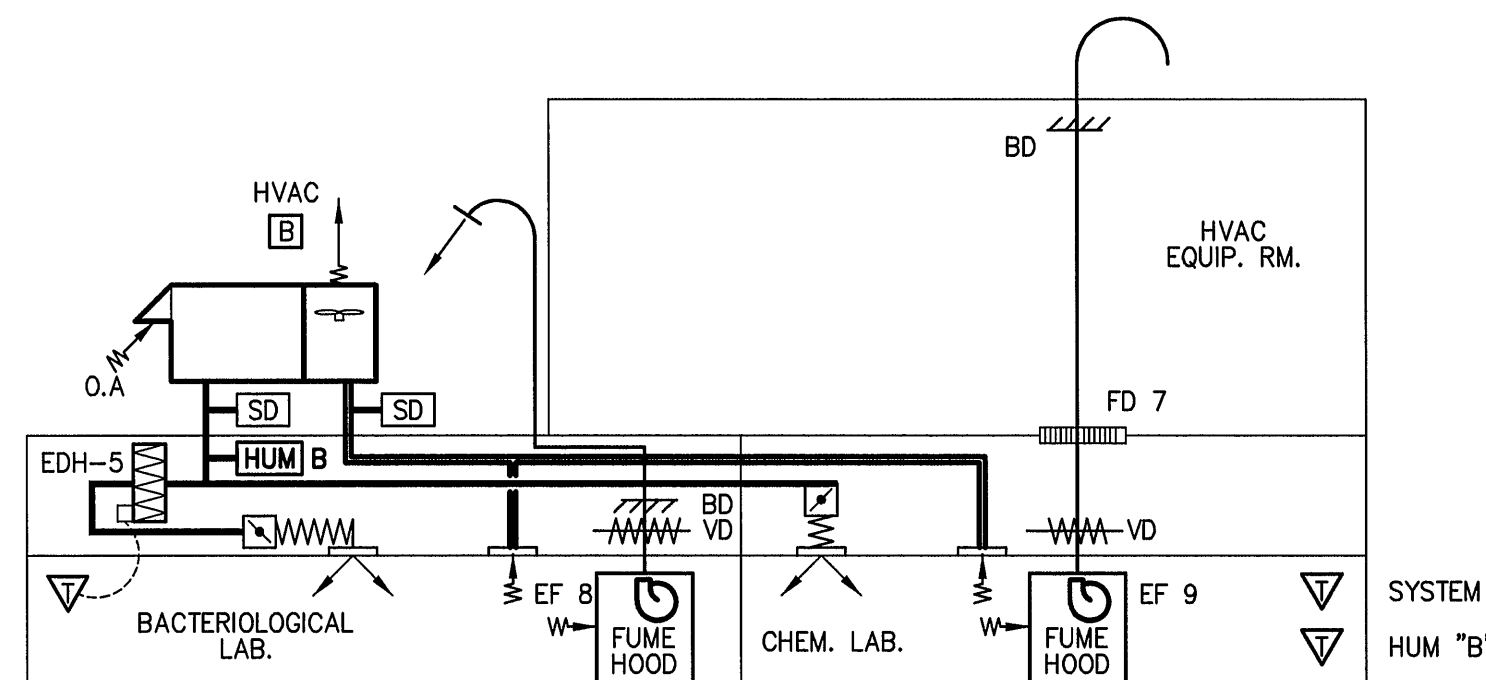
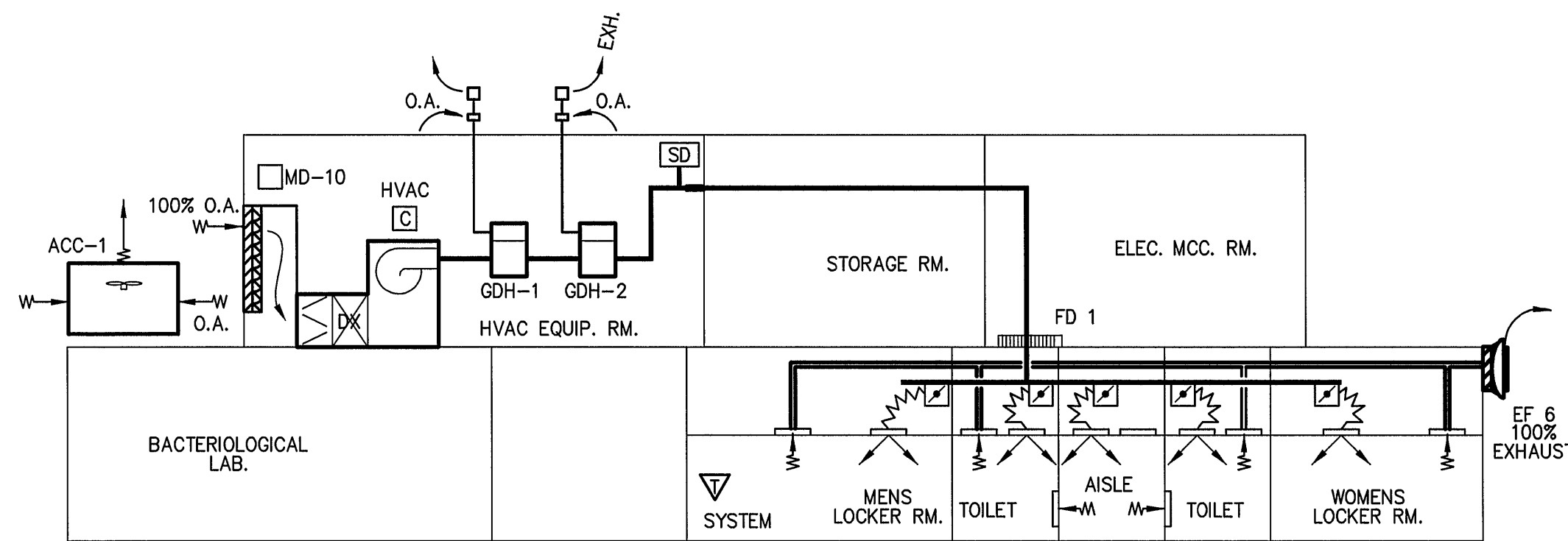


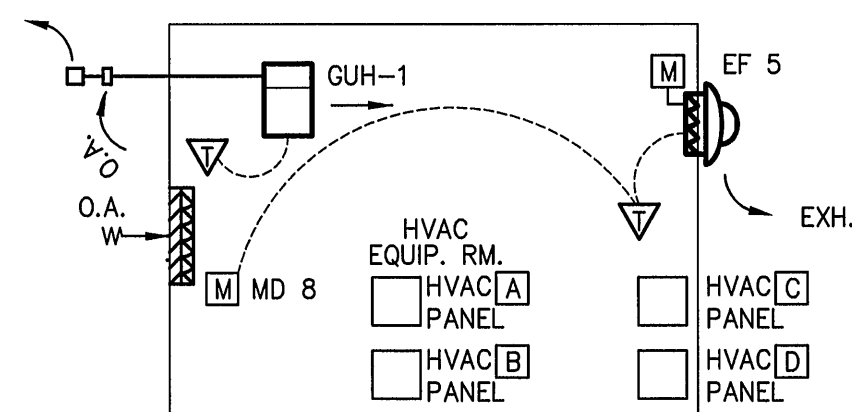
HVAC SYSTEM - A
ADMINISTRATION BUILDING
OFFICES AND CONTROL ROOM



HVAC SYSTEM - B
ADMINISTRATION BUILDING
BACTERIOLOGICAL AND CHEMICAL LABORATORIES



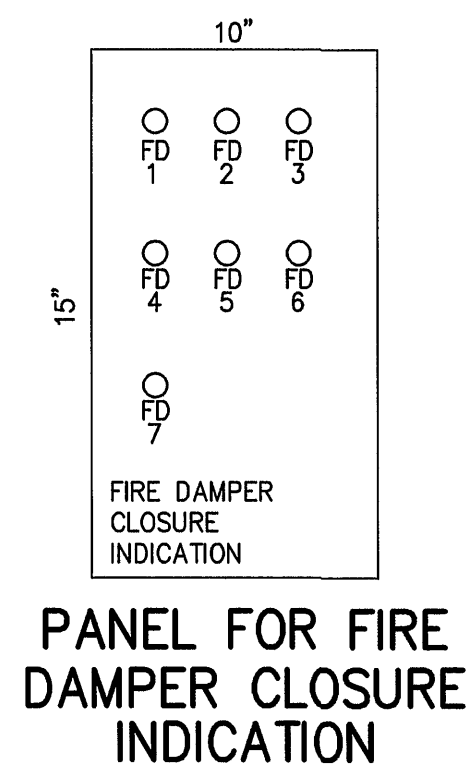
HVAC SYSTEM - C
ADMINISTRATION BUILDING
LOCKER ROOM FACILITIES



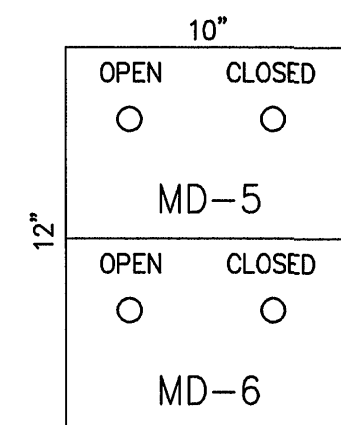
HEATING AND VENTILATING
ADMINISTRATION BUILDING
HVAC EQUIPMENT ROOM

HVAC SCHEMATIC DIAGRAMS
ADMINISTRATION BUILDING

SCALE OF DRAWING 1/8" = 1'-0"

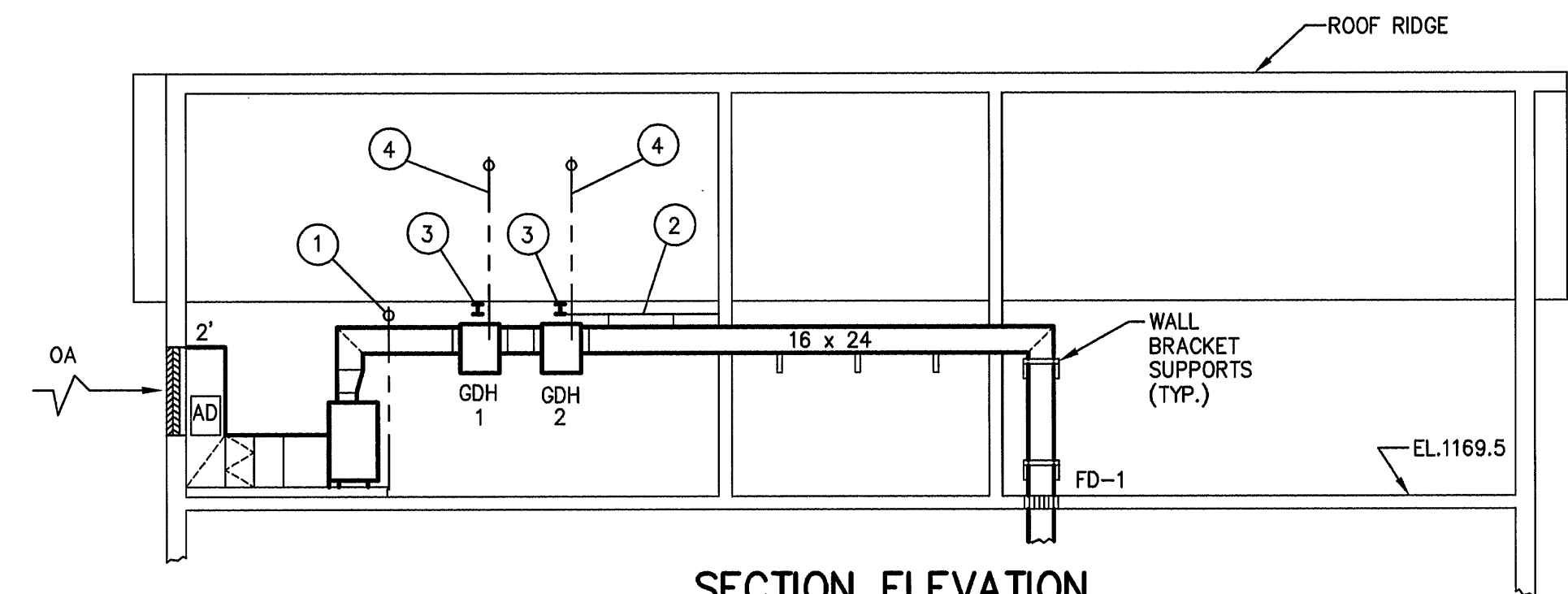


PANEL FOR FIRE
DAMPER CLOSURE
INDICATION



PANEL FOR
DIVERTING DAMPER
INDICATION

	MD-5	MD-6
HVAC [A] IN OPERATION	OPEN	CLOSED
HVAC [B] IN OPERATION	CLOSED	OPEN



SECTION ELEVATION
HVAC-C SYSTEM

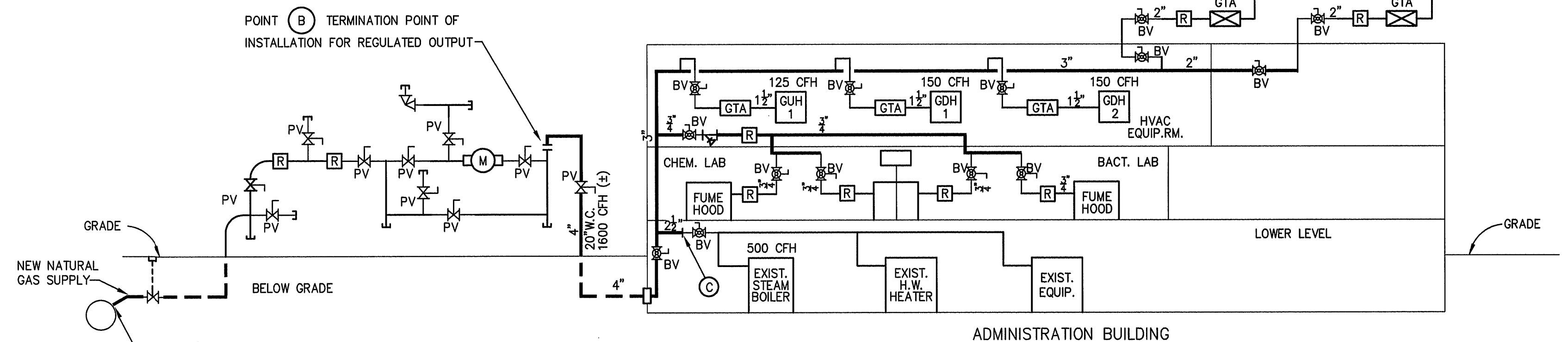
SCALE: 1/8"=1'-0"

GENERAL NOTE-

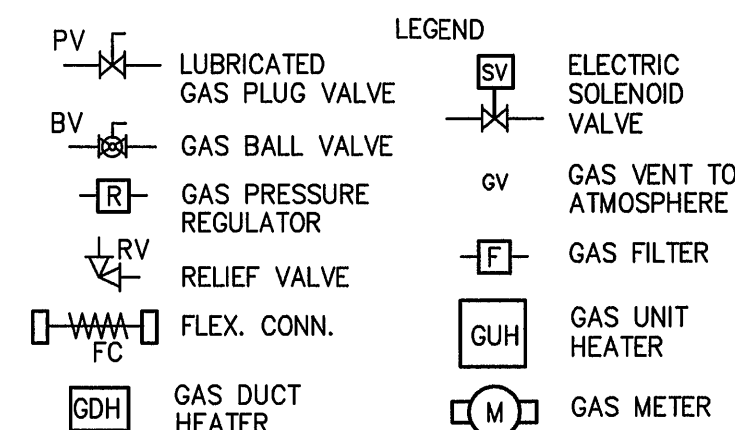
HVAC EQUIPMENT VENDOR IS RESPONSIBLE FOR SELECTING AND MATCHING AIR HANDLER, CONDENSING UNIT AND DX REFRIGERANT COILS AS A COMPLETE SYSTEM FOR 100% O.A. COOLING. ALL COMPONENTS ARE TO BE PROVIDED BY THE SAME MANUFACTURER.

KEYED NOTES:

1. PROVIDE 1" FRAME DUCT SUPPORT, 3"Ø GALV. PIPE, FASTENED TO FLOOR AND BRACED.
2. HORIZONTAL UNISTRUT FRAMING FOR DUCT SUPPORT.
3. W6x9# BEAM.
4. 8" I.D. SEPARATED COMBUSTION METALBESTOS DOUBLE WALL S.S. PIPE UP THROUGH ROOF.



SCHEMATIC FOR NATURAL GAS SUPPLY



NOTES:

- [GTA] REPRESENTS GAS TRAIN ASSEMBLY PROVIDED BY EQUIPMENT VENDOR. PROVIDE REGULATOR GAS RELIEF VENT TO OUTDOOR ATMOSPHERE. REFER TO TYPICAL DETAILS FOR ADDITIONAL INFORMATION SUBJECT TO REQUIREMENTS OF FINAL APPROVED EQUIPMENT SUBMITTALS. LPNG=LOW PRESSURE NATURAL GAS MPNG=MEDIUM PRESSURE NATURAL GAS SCHEMATIC DOES NOT IDENTIFY ALL REQUIRED ACCESSORIES SUCH AS VENTS, GAUGES, BYPASSES, ETC. INDICATED GAS PRESSURES AT EQUIPMENT INLETS ARE SUBJECT TO FINAL APPROVED EQUIPMENT SUBMITTALS. READJUST EXISTING GAS PRESSURE REGULATORS IN ADMINISTRATION BUILDING E.G. STEAM BOILER, HOT WATER HEATER, ETC.

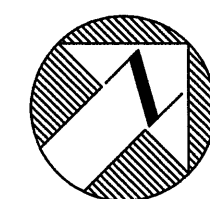
AT DIRECTION OF CONTRACTOR, NATURAL GAS SUPPLIER TO CONSTRUCT A NEW NATURAL GAS SUPPLY PIPING SYSTEM FROM POINT (A) TO POINT (B), HAVING REGULATED OUTPUT. CONTRACTOR SHALL EXTEND NATURAL GAS PIPING FROM POINT (B) AS INDICATED. POINT (C) IS NEW CONNECTION TO EXISTING GAS PIPING IN BOILER ROOM. CONTRACTOR TO COORDINATE PROVISION OF NEW GAS SUPPLY INSTALLATION BY NATURAL GAS SUPPLIER AND INCORPORATE SUCH COST, IF ANY, INTO PROPOSAL.

DRAWING OF RECORD
DATE: SEP 30 1997

MATTERN & CRAIG
CONSULTING ENGINEERS • SURVEYORS
ROANOKE VIRGINIA

ALVORD, BURDICK & HOWSON
ENGINEERS CHICAGO

DESIGNED: S.C.
DRAWN: H.F. THOMAS
CHECKED: S.C.



REV.	DATE	DESCRIPTION	BY	APP.

CARVINS COVE FILTER PLANT IMPROVEMENTS - PHASE I
ROANOKE, VIRGINIA
ADMINISTRATION BLDG. - HVAC SCHEMATICS

DATE
APRIL 1992
COMM. NO.
9130
SHEET
M4